

UNITED STATES  
DEPARTMENT OF THE INTERIOR  
GEOLOGICAL SURVEY30-045-25195  
5. LEASE DESIGNATION AND SERIAL NO.

## APPLICATION FOR PERMIT TO DRILL, DEEPEN, OR PLUG BACK

## 1a. TYPE OF WORK

DRILL ☒DEEPEN ☐PLUG BACK ☐

## b. TYPE OF WELL

OIL  
WELL ☒GAS  
WELL ☐OTHER ☐SINGLE  
ZONE ☒MULTIPLE  
ZONE ☐

## 2. NAME OF OPERATOR

SUPRON ENERGY CORPORATION

## 3. ADDRESS OF OPERATOR

P.O. Box 808, Farmington, New Mexico 87401

## 4. LOCATION OF WELL (Report location clearly and in accordance with any State requirements.\*)

At surface

990 ft./South line and 990 ft./East line

At proposed prod. zone

Same as above

## 14. DISTANCE IN MILES AND DIRECTION FROM NEAREST TOWN OR POST OFFICE\*

2 miles southeast of Bloomfield, New Mexico 87401

## 15. DISTANCE FROM PROPOSED\*

LOCATION TO NEAREST 330 ft.

PROPERTY OR LEASE LINE, FT. 330 ft.

(Also to nearest drlg. unit line, if any)

## 18. DISTANCE FROM PROPOSED LOCATION\*

TO NEAREST WELL, DRILLING, COMPLETED,

OR APPLIED FOR, ON THIS LEASE, FT. 190 ft.

## 21. ELEVATIONS (Show whether DF, RT, GR, etc.)

5619 Gr.

## 23.

## PROPOSED CASING AND CEMENTING PROGRAM

SIZE OF HOLE	SIZE OF CASING	WEIGHT PER FOOT	SETTING DEPTH	QUANTITY OF CEMENT
12-1/4"	8-5/8"	24.00	250 ft.	150 sx circulated
7-7/8"	5-1/2"	15.50	5925 ft.	1900 cu. ft. cover the Ojo Alamo

Note paragraphs 4B &amp; 15C

We desire to drill this well by drilling 12 1/4" surface hole to approximately 250 ft. with natural mud. Run new 8-5/8" surface casing to T.D. and cement in place. Circulate the cement to the surface. Pressure test the pipe. Drill out with 7-7/8" bit and drill to T.D. of approximately 5925 ft. using a starch base, permaloid non-dispersed mud as the circulating medium. Log the well. Run new 5 1/2" 15.50#, csg. to T.D. and cement as follows: 1st stage - approximately 900 cu. ft. of 50-50 POZ. 2nd stage - approximately 1000 cubic ft. of 65-35 POZ to cover the Ojo Alamo. Pressure test the casing. Perforate and fracture the Gallup zone. Run 2-3/8" tbq. to the production zone. Nipple down the wellhead and install a pumping unit. Test the well and connect to a gathering system.

This gas has previously been dedicated to a transporter.

IN ABOVE SPACE DESCRIBE PROPOSED PROGRAM: If proposal is to deepen or plug back, give data on present productive zone and proposed new productive zone. If proposal is to drill or deepen directionally, give pertinent data on subsurface locations and measured and true vertical depths. Give blowout preventer program, if any.

## 24.

SIGNED

Rudy E. Motto

TITLE Area Superintendent

DATE August 25, 1981

(This space for Federal or State office use)

PERMIT NO.

APPROVAL DATE

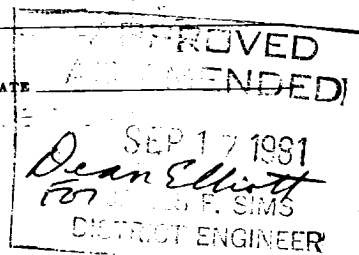
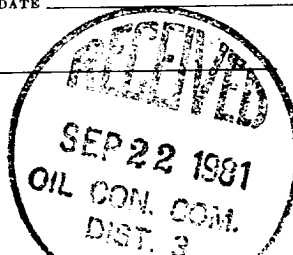
APPROVED BY

TITLE

CONDITIONS OF APPROVAL, IF ANY:

at J

OIL CON.



All distances must be from the outer boundaries of the Section.

Operator <b>SUPRON ENERGY CORPORATION</b>			Lease <b>CALVIN</b>		Well No. <b>#2</b>
Unit Letter <b>P</b>	Section <b>26</b>	Township <b>29 NORTH</b>	Range <b>11 WEST</b>	County <b>SAN JUAN</b>	
Actual Footage Location of Well:					
990 feet from the <b>SOUTH</b> line and		990 feet from the <b>EAST</b> line			
Ground Level Elev. <b>5619</b>	Producing Formation <b>Wildcat</b>	Pool <b>Gallup</b>	Dedicated Acreage: <b>40.00</b> Ac		

- Outline the acreage dedicated to the subject well by colored pencil or hatchure marks on the plat below.
- If more than one lease is dedicated to the well, outline each and identify the ownership thereof (both as to working interest and royalty).
- If more than one lease of different ownership is dedicated to the well, have the interests of all owners been consolidated by communitization, unitization, force-pooling, etc?

☐ Yes ☐ No If answer is "yes," type of consolidation \_\_\_\_\_

If answer is "no," list the owners and tract descriptions which have actually been consolidated. (Use reverse side of this form if necessary.) \_\_\_\_\_

No allowable will be assigned to the well until all interests have been consolidated (by communitization, unitization, forced-pooling, or otherwise) or until a non-standard unit, eliminating such interests, has been approved by the Division.

CERTIFICATION

I hereby certify that the information contained herein is true and complete to the best of my knowledge and belief.

*Rudy D. Motto*  
Name

**Rudy D. Motto**  
Position

**Area Superintendent**

**SUPRON ENERGY CORPORATION**  
Company

**August 14, 1981**  
Date

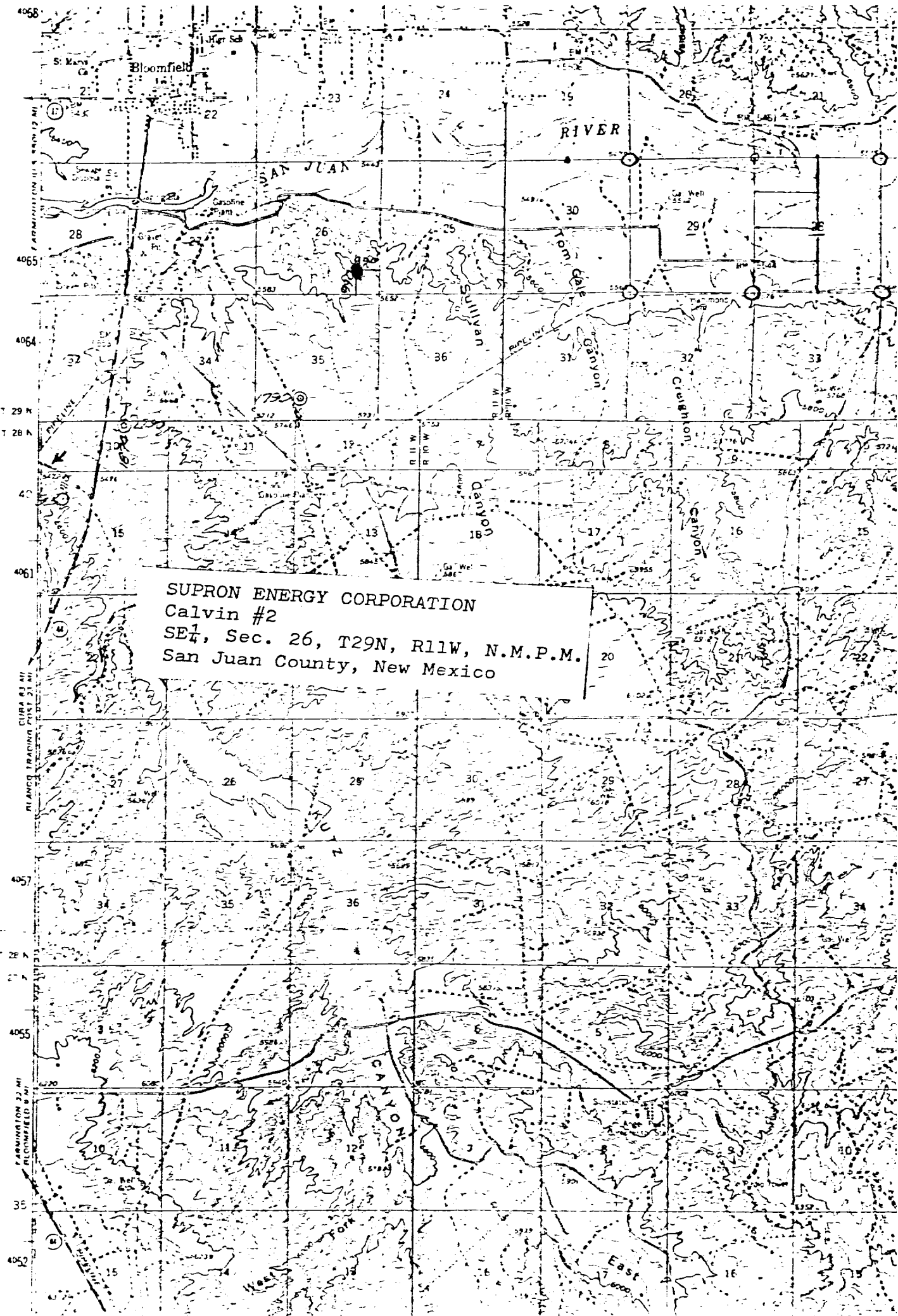
I hereby certify that the well location shown on this plat was plotted from field notes of previous surveys made by me or under my supervision and that the same are true and correct to the best of my knowledge and belief.

*Michael Daly*  
Date Surveyed  
**August 13, 1981**

**Registered Professional Engineer and/or Land Surveyor**

**Michael Daly**

Certificate No.  
**5992**



SUPRON ENERGY CORPORATION  
Calvin #2  
SE $\frac{1}{4}$ , Sec. 26, T29N, R11W, N.M.P.M.  
San Juan County, New Mexico