

UNITED STATES
DEPARTMENT OF THE INTERIOR
GEOLOGICAL SURVEY

APPLICATION FOR PERMIT TO DRILL, DEEPEN, OR PLUG BACK

1a. TYPE OF WORK

DRILL ☒DEEPEN ☐PLUG BACK ☐

b. TYPE OF WELL

OIL
WELL ☒GAS
WELL ☐OTHER ☐SINGLE
ZONE ☒MULTIPLE
ZONE ☐

2. NAME OF OPERATOR

Union Texas Petroleum Corporation

3. ADDRESS OF OPERATOR

P.O. Box 808, Farmington, New Mexico 87401

4. LOCATION OF WELL (Report location clearly and in accordance with any State requirements.)*

At surface

1895 ft./South line and 2120 ft./West line

At proposed prod. zone

Same as above

14. DISTANCE IN MILES AND DIRECTION FROM NEAREST TOWN OR POST OFFICE*

4 miles Southeast of Bloomfield, New Mexico, 87413

10. DISTANCE FROM PROPOSED*

LOCATION TO NEAREST

PROPERTY OR LEASE LINE, FT.

(Also to nearest drig. unit line, if any)

520 ft.

520 ft.

18. DISTANCE FROM PROPOSED LOCATION*

TO NEAREST WELL, DRILLING, COMPLETED,
OR APPLIED FOR, ON THIS LEASE, FT.

2,100 ft.

16. NO. OF ACRES IN LEASE

2,284.30

19. PROPOSED DEPTH

6,055 ft.

17. NO. OF ACRES ASSIGNED
TO THIS WELL

NE SW 40.00

20. ROTARY OR CABLE TOOLS

Rotary

21. ELEVATIONS (Show whether DF, RT, GR, etc.)

5723 GR.

22. APPROX. DATE WORK WILL START*

October 20, 1982

23. PROPOSED CASING AND CEMENTING PROGRAM

SIZE OF HOLE	SIZE OF CASING	WEIGHT PER FOOT	SETTING DEPTH	QUANTITY OF CEMENT
13-3/4"	10-3/4" New	40.55 K55	300 ft.	24 cu. ft. (circulated)
9-7/8"	7-5/8" New	26.40 K55	5265 ft.	1440 cu. ft. (Cover Ojo Alamo zone)
6-3/4"	5-1/2" New	15.50 J55	5065' to 6055'	142 cu. ft. (Top of the liner hange)

We desire to drill 13-3/4" surface hole to approx. 300 ft. using natural mud as the circulating medium. Run new 10-3/4" pipe to T.D. Cement with approx. 240 cu. ft. of Class "B" cement circulated to the surface. W.O.C. Pressure test the csg. to 800 PSIG for 10 minutes. Drill 9-7/8" intermediate hole to approx. 5265 ft. using a starch base, permaloid, non-dispersed mud as the circulating medium. Log the well. Run new 7-5/8" casing to T.D. with a D. V. tool at approximately 2000 ft. Cement the first stage with approximately 620 cu. ft. of 65/35/6 cement followed by approximately 90 cu. ft. of Class "B" cement. 2nd stage with approx. 640 cu. ft. of 65/35/12 cement followed by approximately 90 cu. ft. of Class "B" cement. Drill out the D.V. tool. Test the casing to 1500 PSIG for 10 minutes. Drill out with 6-3/4" bit to approx. 6055 ft. using natural gas as the circulating medium. Log the well. Run new 5-1/2" casing with line hanger at approx. 5065 ft. to T.D. of approx. 6055 ft. Cement with approx. 142 cu. ft. of 50/50 poz. Cement to cover the liner hanger. Perf. & fracture the Gallup zone. Clean the well up. Run new 2-3/8", J55, 4.7#, E.U.E. tbg. to the Gallup zone. Nipple down the well head. Run a pump and rods. Set a pumping unit and tanks. Connect to a gathering system. Test the well. The gas from this well has previously been dedicated to a transporter.

IN ABOVE SPACE DESCRIBE PROPOSED PROGRAM: If proposal is to deepen or plug back, give data on present productive zone and proposed new productive zone. If proposal is to drill or deepen directionally, give pertinent data on subsurface locations and measured and true vertical depths. Give blowout preventer program, if any.

24.

SIGNED

RUDY D. MOTO

TITLE Field Operations Manager

DATE September 10, 1982

(This space for Federal or State office use)

PERMIT NO.

APPROVED BY

CONDITIONS OF APPROVAL, IF ANY:

DRILLING OPERATIONS AUTHORIZED ARE
SUBJECT TO COMPLIANCE WITH ATTACHED
"GENERAL REQUIREMENTS"

RECEIVED
APPROVAL DATE

OCT 14 1982

OIL CON. COM.
DIST. 3APPROVED
AS AMENDED

DATE

OCT 12 1982

For JAMES F. ST
DISTRICT ENGINEER

RMOCC

All distances must be from the outer boundaries of the Section.

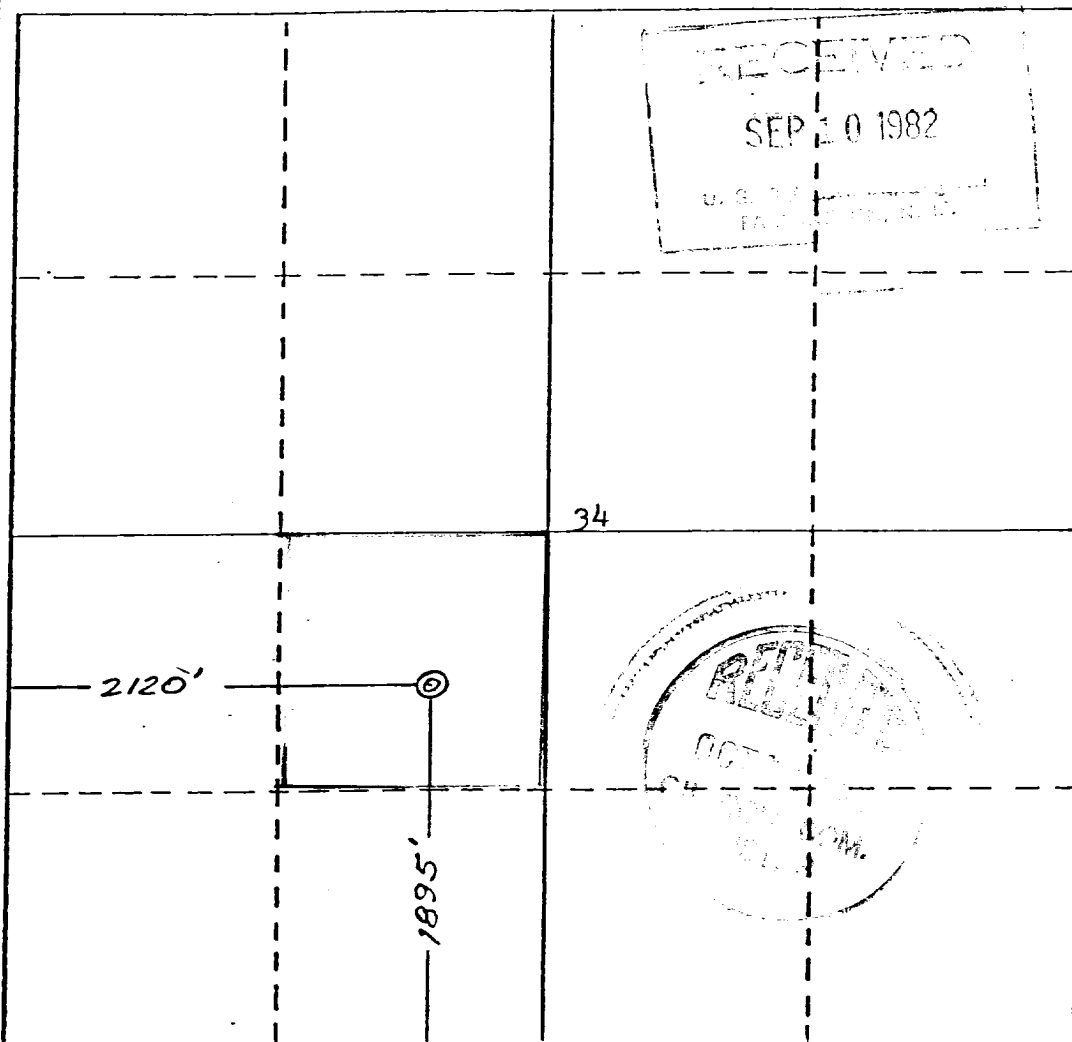
Operator UNION TEXAS PETROLEUM CORP.			Lease ZACHRY		Well No. 32
Unit Letter K	Section 34	Township 29 NORTH	Range 10 WEST	County SAN JUAN	
Actual Footage Location of Well: 1895 feet from the SOUTH line and 2120 feet from the WEST line					
Ground Level Elev. 5723	Producing Formation GALLUP	Pool Armenta Extention		Dedicated Acreage: NE SW 40.00 Acres	

1. Outline the acreage dedicated to the subject well by colored pencil or hachure marks on the plat below.
2. If more than one lease is dedicated to the well, outline each and identify the ownership thereof (both as to working interest and royalty).
3. If more than one lease of different ownership is dedicated to the well, have the interests of all owners been consolidated by communitization, unitization, force-pooling, etc?

☐ Yes ☒ No If answer is "yes," type of consolidation _____

If answer is "no," list the owners and tract descriptions which have actually been consolidated. (Use reverse side of this form if necessary.) _____

No allowable will be assigned to the well until all interests have been consolidated (by communitization, unitization, forced-pooling, or otherwise) or until a non-standard unit, eliminating such interests, has been approved by the Division.



CERTIFICATION

I hereby certify that the information contained herein is true and complete to the best of my knowledge and belief.

Name Rudy D. Motto

Position Field Operations Manager

Company Union Texas Petroleum Corp.

Date August 10, 1982

I hereby certify that the well location shown on this plat is plotted from field notes of actual survey made by me or under my supervision, and that the same is true and correct to the best of my knowledge and belief.

Date Surveyed July 29, 1982

Registered Professional Engineer and/or Land Surveyor

James P. Leese
James P. Leese

Certificate No. 1463

X. W 517 248 R 9 W 249

