

UNITED STATES  
DEPARTMENT OF THE INTERIOR  
GEOLOGICAL SURVEY

APPLICATION FOR PERMIT TO DRILL, DEEPEN, OR PLUG BACK

1a. TYPE OF WORK

DRILL ☒

DEEPEN ☐

PLUG BACK ☐

b. TYPE OF WELL

OIL  
WELL ☐

GAS  
WELL ☒

OTHER

SINGLE  
ZONE ☒

MULTIPLE  
ZONE ☐

2. NAME OF OPERATOR

Energy Reserves Group, Inc.

3. ADDRESS OF OPERATOR

Box 3280, Casper, Wyoming 82602

4. LOCATION OF WELL (Report location clearly and in accordance with any State requirements.)\*

At surface

930' FSL 1,080' FEL

At proposed prod. zone

14. DISTANCE IN MILES AND DIRECTION FROM NEAREST TOWN OR POST OFFICE\*

Approx. 4 miles Southeast of Farmington, New Mexico

15. DISTANCE FROM PROPOSED\*

LOCATION TO NEAREST  
PROPERTY OR LEASE LINE, FT.  
(Also to nearest drlg. unit line, if any)

930'

16. NO. OF ACRES IN LEASE

27,794.68

17. NO. OF ACRES ASSIGNED  
TO THIS WELL

160 157.24

18. DISTANCE FROM PROPOSED\*

TO NEAREST WELL, DRILLING, COMPLETED,  
OR APPLIED FOR, ON THIS LEASE, FT.

130'

19. PROPOSED DEPTH

1,710'

20. ROTARY OR CABLE TOOLS

Rotary

21. ELEVATIONS (Show whether DF, RT, GR, etc.)

5661' GR ungraded

22. APPROX. DATE WORK WILL START\*

Summer, 1982

23. PROPOSED CASING AND CEMENTING PROGRAM

SIZE OF HOLE	SIZE OF CASING	WEIGHT PER FOOT	SETTING DEPTH	QUANTITY OF CEMENT
9-7/8"	7"	17#	100'	Cement to the surface
6-1/4"	4-1/2"	9.5#	1,710'	Cement to the surface

It is proposed to drill the above referenced well with rotary tools from the surface to T.D. The anticipated zone of completion is the Pictured Cliffs Formation. Attached is the 10 Point Drilling Plan and 13 Point Surface Use Plan.



IN ABOVE SPACE DESCRIBE PROPOSED PROGRAM: If proposal is to deepen or plug back, give data on present productive zone and proposed new productive zone. If proposal is to drill or deepen directionally, give pertinent data on subsurface locations and measured and true vertical depths. Give blowout preventer program, if any.

24.

SIGNED

TITLE Field Services Adm.

DATE April 29, 1982

(This space for Federal or State office use)

PERMIT NO.

APPROVAL DATE

APPROVED BY

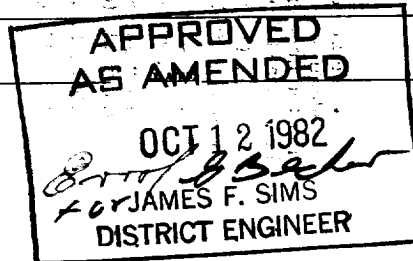
TITLE

CONDITIONS OF APPROVAL, IF ANY:

This action is subject to administrative  
appeal pursuant to 30 CFR 290.

DRILLING OPERATIONS AUTHORIZED ARE  
SUBJECT TO COMPLIANCE WITH ATTACHED  
"GENERAL REQUIREMENTS"

NMOCC



## OIL CONSERVATION DIVISION

STATE OF NEW MEXICO  
ENERGY AND MINERALS DEPARTMENTP. O. BOX 2088  
SANTA FE, NEW MEXICO 87501Form C-102  
Revised 10-1-78

All distances must be from the outer boundaries of the Section.

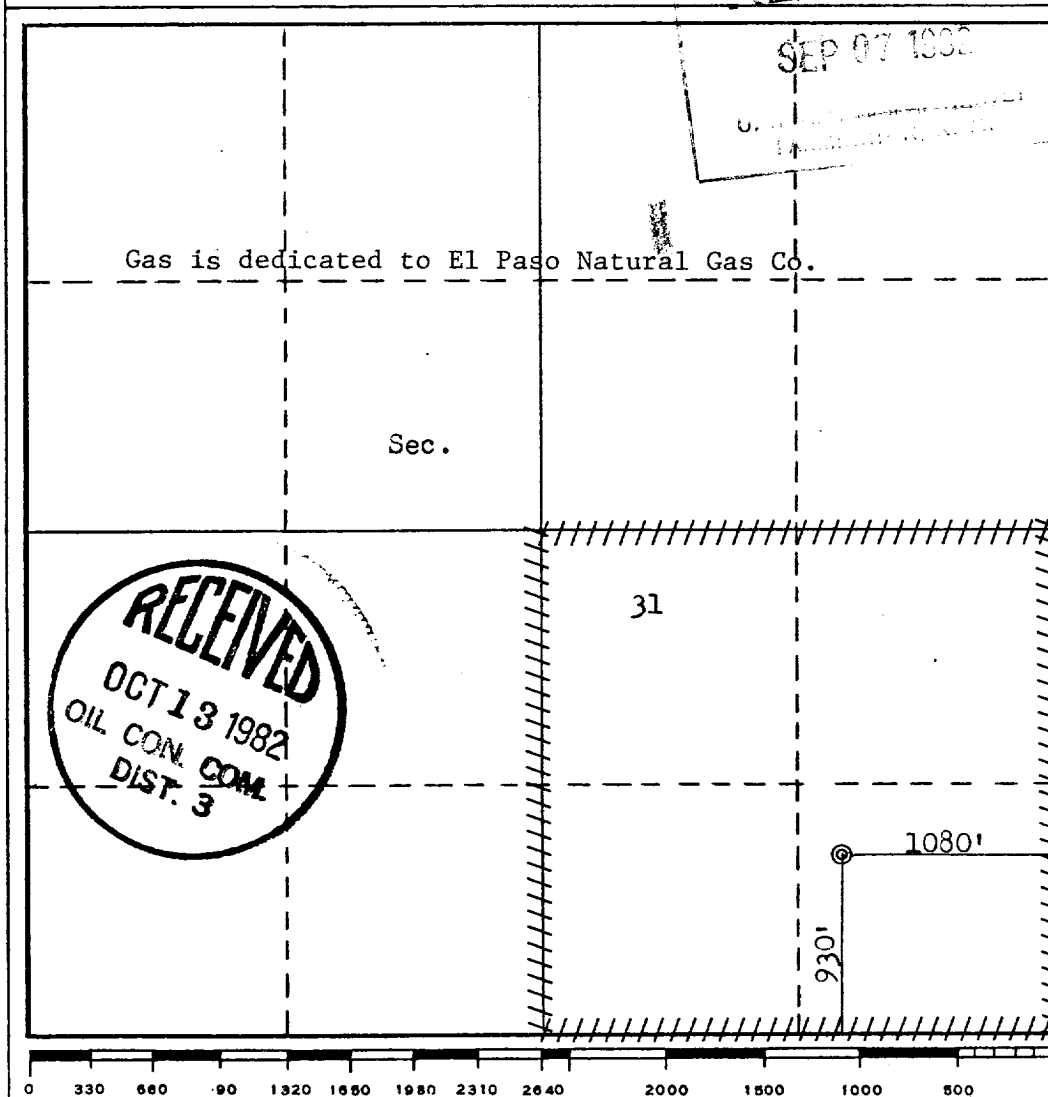
Operator <b>ENERGY RESERVES GROUP, INC.</b>			Lease <b>GALLEGOS CANYON UNIT</b>		Well No. <b>332</b>
Unit Letter <b>P</b>	Section <b>31</b>	Township <b>29N-</b>	Range <b>12W</b>	County <b>San Juan</b>	
Actual Footage Location of Well: <b>930</b> feet from the <b>South</b> line and <b>1080</b> feet from the <b>East</b> line					
Ground Level Elev. <b>5661</b>	Producing Formation <b>Pictured Cliffs</b>		Pool <b>West Kutz Pictured Cliffs</b>		Dedicated Acreage: <b>160-157.24</b> Acres

1. Outline the acreage dedicated to the subject well by colored pencil or hachure marks on the plat below.
2. If more than one lease is dedicated to the well, outline each and identify the ownership thereof (both as to working interest and royalty).
3. If more than one lease of different ownership is dedicated to the well, have the interests of all owners been consolidated by communitization, unitization, force-pooling, etc?

☐ Yes ☐ No If answer is "yes," type of consolidation \_\_\_\_\_

If answer is "no," list the owners and tract descriptions which have actually been consolidated. (Use reverse side of this form if necessary.) \_\_\_\_\_

No allowable will be assigned to the well until all interests have been consolidated (by communitization, unitization, forced-pooling, or otherwise) or until a non-standard unit, eliminating such interests, has been approved by the Commission.



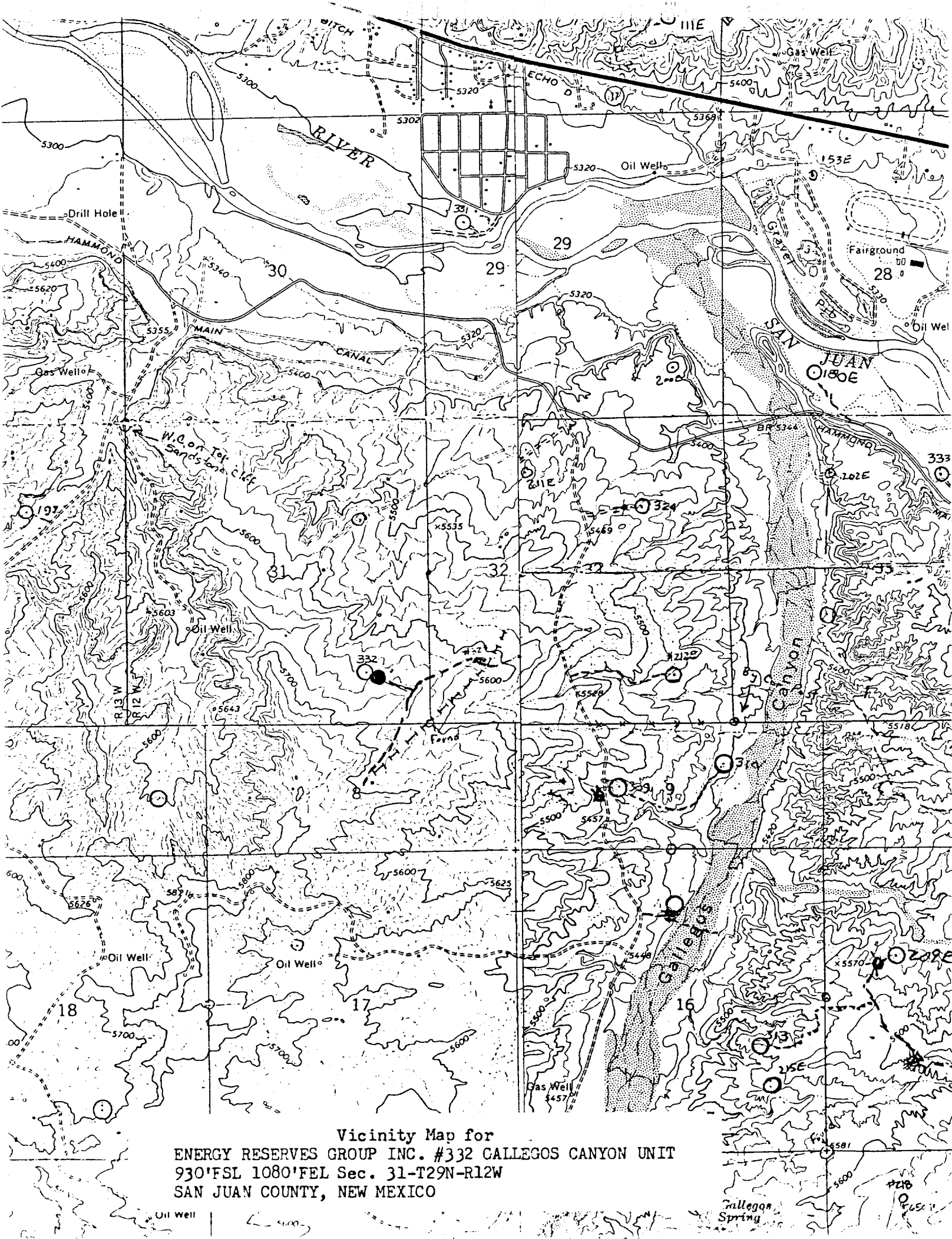
## CERTIFICATION

I hereby certify that the information contained herein is true and complete to the best of my knowledge and belief.

Name  
*[Signature]*  
Position  
Field Services Administrator  
Company  
Energy Reserves Group, Inc.  
Date  
May 4, 1982

I hereby certify that the well location shown on this plat was plotted from field notes of actual surveys made by me or under my supervision, and that the same is true and correct to the best of my knowledge and belief.

Date Surveyed  
April 2, 1982  
Registered Professional Engineer and/or Land Surveyor  
*[Signature]*  
Fred B. Kerr Jr.  
Certificate No.  
3950



Vicinity Map for  
ENERGY RESERVES GROUP INC. #332 CALLEGOS CANYON UNIT  
930'FSL 1080'FEL Sec. 31-T29N-R12W  
SAN JUAN COUNTY, NEW MEXICO