

UNITED STATES  
DEPARTMENT OF THE INTERIOR  
GEOLOGICAL SURVEY

30-045-35503

## APPLICATION FOR PERMIT TO DRILL, DEEPEN, OR PLUG BACK

1a. TYPE OF WORK

DRILL ☒DEEPEN ☐PLUG BACK ☐

b. TYPE OF WELL

OIL  
WELL ☒GAS  
WELL ☐OTHER ☐SINGLE  
ZONE ☒MULTIPLE  
ZONE ☐

2. NAME OF OPERATOR

Union Texas Petroleum Corporation

3. ADDRESS OF OPERATOR

P.O. Box 808, Farmington, NM 87401

4. LOCATION OF WELL (Report location clearly and in accordance with any State requirements.)  
At surface 937 ft./North; 1785 ft./West linesU. S. GEOLOGICAL SURVEY  
FARMINGTON, N. M.

At proposed prod. zone Same as above

14. DISTANCE IN MILES AND DIRECTION FROM NEAREST TOWN OR POST OFFICE\*

6-1/2 miles Southeast of Bloomfield, New Mexico

15. DISTANCE FROM PROPOSED\*

LOCATION TO NEAREST

PROPERTY OR LEASE LINE, FT.

(Also to nearest drlg. unit line, if any)

855 ft.

855 ft.

18. DISTANCE FROM PROPOSED LOCATION\*

TO NEAREST WELL, DRILLING, COMPLETED,

OR APPLIED FOR, ON THIS LEASE, FT.

120 ft.

21. ELEVATIONS (Show whether DF, RT, GR, etc.)

5620 Gr.

16. NO. OF ACRES IN LEASE

2284.30

19. PROPOSED DEPTH

5995

17. NO. OF ACRES ASSIGNED  
TO THIS WELL

SW SE 40.00

20. ROTARY OR CABLE TOOLS

Rotary

22. APPROX. DATE WORK WILL START\*

October 20, 1982

## PROPOSED CASING AND CEMENTING PROGRAM

SIZE OF HOLE	SIZE OF CASING	WEIGHT PER FOOT	SETTING DEPTH	QUANTITY OF CEMENT
13-3/4"	10-3/4" K-55	40.55	300 ft.	240 cu. ft. (Circulated)
9-7/8"	7-5/8" K-55	26.40	4650 ft.	1440 cu. ft. (Top of the Ojo Alamo)
6-3/4"	5-1/2" J-55	15.50	4650 - 5995 ft	142 cu. ft. (Top of the liner)

We desire to drill 13-3/4" surface hole to approximately 300 ft. using natural mud as the circulating medium. Run new pipe to T.D. Cement with approximately 240 cu. ft. of Class "B" cement circulated to surface. W.O.C. Pressure test the pipe to 800 PSIG for 10 minutes. Drill out with 9-7/8" bit to approximately 4650 ft. using a starch base, permaloid, non-dispersed mud as a circulating medium. Log the well. Run new casing to T.D. with a D.V. tool at approximately 2000 ft. Cement first stage w/approximately 620 cu. ft. of 65/35/6 followed by approximately 90 cu. ft. of class "B" cement. Cement 2nd stage w/approximately 640 cu. ft. of 65/35/12 followed by approximately 90 cu. ft. of Class "B" cement. W.O.C. Pressure test the casing to approximately 1500 PSIG for 10 minutes. Drill 6-3/4" hole to T.D. of approximately 5995 ft. using natural gas as the circulating medium. Log the well. Run new 5-1/2" pipe to T.D. w/a liner at approximately 4650 ft. Cement with approximately 142 cu. ft. of 50-50 poz. W.O.C. Test the casing. Perf and fracture the Gallup zone. Clean the well up. Run new 2-3/8" EUE, 4.7#, J-55 tubing to the Gallup zone. Nipple down the well head. Run pump and rods. Set pumping unit and tanks. Test well. Connect to a gathering system.

The gas from this well has previously been dedicated to a transporter.

IN ABOVE SPACE DESCRIBE PROPOSED PROGRAM: If proposal is to deepen or plug back, give data on present productive zone and proposed new productive zone. If proposal is to drill or deepen directionally, give pertinent data on subsurface locations and measured and true vertical depths. Give blowout preventer program, if any.

SIGNED

Rudy D. Motto

TITLE Field Operations Manager

DATE September 6, 1982

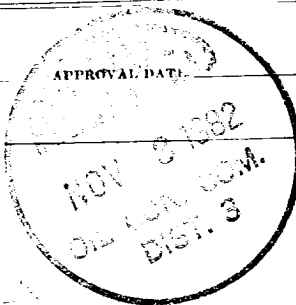
(This space for Federal or State office use)

PERMIT NO.

APPROVED BY

CONDITIONS OF APPROVAL, IF ANY:

TITLE

APPROVED  
AS AMENDED

NOV 02 1982

JAMES F. SIMS  
DISTRICT ENGINEER

**NEW MEXICO OIL CONSERVATION COMMISSION  
WELL LOCATION AND ACREAGE DEDICATION PLAT**

Form C-102  
Supersedes C-  
Effective 1-4-8

All distances must be from the outer boundaries of the Section.

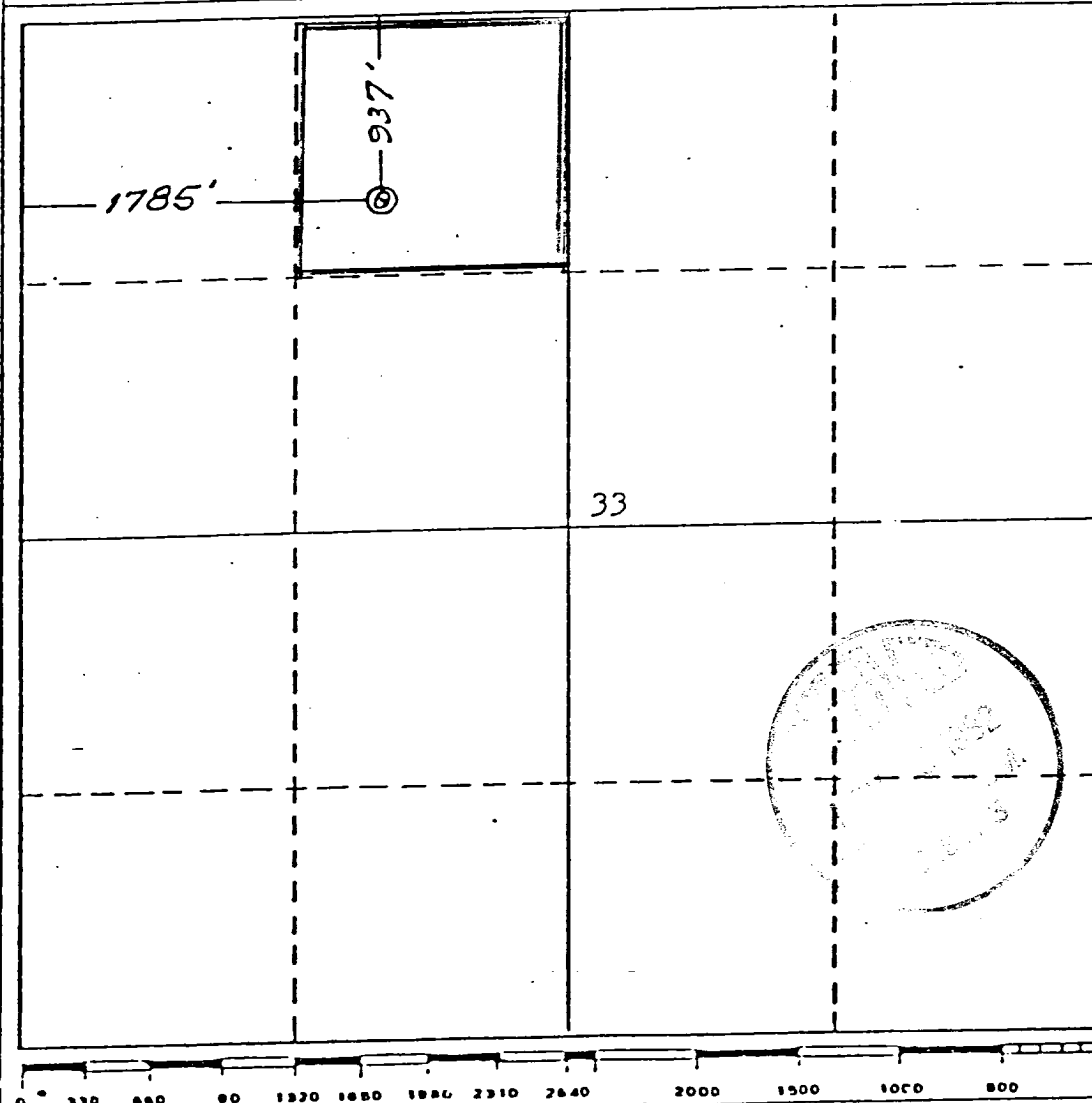
Operator <b>UNION TEXAS PETROLEUM CORP.</b>			Lease <b>ZACHRY</b>		Well No. <b>29</b>
Unit Letter <b>C</b>	Section <b>33</b>	Township <b>29 NORTH</b>	Range <b>10 WEST</b>	County <b>SAN JUAN</b>	
Actual Footage Location of Well: <b>937</b> feet from the <b>NORTH</b> line and <b>1785</b> feet from the <b>WEST</b> line					
Ground Level Elev. <b>5620</b>	Producing Formation <b>GALLUP</b>		Pool <b>Armenta</b>	Dedicated Acreage <b>NE NW 40.00</b> Acres	

1. Outline the acreage dedicated to the subject well by colored pencil or hatchure marks on the plat below.
2. If more than one lease is dedicated to the well, outline each and identify the ownership thereof (both as to working interest and royalty).
3. If more than one lease of different ownership is dedicated to the well, have the interests of all owners been consolidated by communitization, unitization, force-pooling, etc?

☐ Yes    ☒ No    If answer is "yes," type of consolidation \_\_\_\_\_

If answer is "no," list the owners and tract descriptions which have actually been consolidated. (Use reverse side of this form if necessary.) \_\_\_\_\_

No allowable will be assigned to the well until all interests have been consolidated (by communitization, unitization, forced-pooling, or otherwise) or until a non-standard unit, eliminating such interests, has been approved by the Commission.

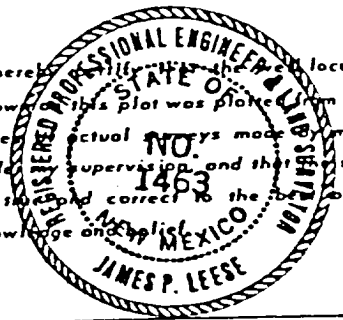


**CERTIFICATION**

I hereby certify that the information contained herein is true and complete to the best of my knowledge and belief.

Name  
**Rudy D. Motto**  
Position  
**Field Operations Manager**  
Company  
**Union Texas Petroleum Corp.**  
Date  
**August 10, 1982**

I hereby certify that the well location shown on this plat was plotted from field notes, actual surveys made by me or under my supervision, and that the same is true and correct to the best of my knowledge and belief.



Date Surveyed  
**July 30, 1982**  
Registered Professional Engineer and/or Land Surveyor  
**James P. Leese**  
Certificate No.  
**1463**

