

UNITED STATES
DEPARTMENT OF THE INTERIOR
GEOLOGICAL SURVEY

APPLICATION FOR PERMIT TO DRILL, DEEPEN, OR PLUG BACK

1a. TYPE OF WORK

DRILL ☒DEEPEN ☐PLUG BACK ☐

b. TYPE OF WELL

OIL
WELL ☒GAS
WELL ☐

OTHER

SINGLE
ZONE ☐MULTIPLE
ZONE ☐

2. NAME OF OPERATOR:

Union Texas Petroleum Corporation

3. ADDRESS OF OPERATOR

Post Office Box 808, Farmington, New Mexico, 87401

4. LOCATION OF WELL (Report location clearly and in accordance with any State requirements.)

At surface

2070 ft. /South line and 1705 ft. /West line

At proposed prod. zone

Same as above

14. DISTANCE IN MILES AND DIRECTION FROM NEAREST TOWN OR POST OFFICE*

5 miles southeast of Bloomfield, New Mexico

15. DISTANCE FROM PROPOSED*

LOCATION TO NEAREST
PROPERTY OR LEASE LINE, FT.
(Also to nearest drlg. unit line, if any)

385 ft.

385 ft.

18. DISTANCE FROM PROPOSED LOCATION*

TO NEAREST WELL, DRILLING, COMPLETED,
OR APPLIED FOR, ON THIS LEASE, FT.

352 ft.

21. ELEVATIONS (Show whether DF, RT, GR, etc.)

5,767 Gr.

23. PROPOSED CASING AND CEMENTING PROGRAM

| SIZE OF HOLE | SIZE OF CASING | WEIGHT PER FOOT | SETTING DEPTH | QUANTITY OF CEMENT |
|--------------|----------------|-----------------|----------------|--|
| 13-3/4" | 10-3/4" K55 | 40.55 | 300 ft. | 240 cu. ft. (Circulated) |
| 9-7/8" | 7-5/8" K55 | 26.40 | 5292 ft. | 1440 cu. ft. (To base of surface pipe) |
| 6-3/4" | 5-1/2" J55 | 15.50 | 5092' to 6092' | 142 cu. ft. (To top of liner) |

We desire to drill 13-3/4" surface hole to approx. 300 ft. using natural mud as a circulating medium. Run new 10-3/4", K55, 40.55#, ST&C pipe to TD. Cement with approx. 240 cu. ft. of Class "B" cement circulated to surface. WOC. Drill out with 9-7/8" bit to approx. 5292 ft. using a starch base, permaloid, non-dispersed mud as a circulating medium. Run new 7-5/8", K55, 26.40# casing to TD w/DV tool at approx. 2000 ft. Cement first stage w/approx. 630 cu. ft. of 65/35/6 poz mix followed by approx. 90 cu. ft. of Class "B" cement, second stage w/approx. 640 cu. ft. of 65/35/12 followed by approx. 90 cu. ft. of Class "B". WOC. Drill out DV tool. Pressure test the csg. to 1500 PSIG for 10 minutes. Drill out w/6-3/4" bit using natural gas as the circulating medium to TD of approx. 6092 ft. Log the well. Run new 5-1/2", 15.50#, K55 ST&C pipe to TD with liner hanger at approx 5092 ft. Cement w/approx. 142 cu. ft. of 50-50 poz mix to cover the liner hanger. WOC. Test the pipe. Perf and frac the Gallup zone. Clean the well up. Run new 2-3/8", EUE, J55, 4.7# tbg. to the Gallup zone. Nipple down the well head. Run pump and rods. Set pumping unit and tanks. Connect to a gathering system. Test well. This gas has been previously dedicated to a transporter.

IN ABOVE SPACE DESCRIBE PROPOSED PROGRAM: If proposal is to deepen or plug back, give data on present productive zone and proposed new productive zone. If proposal is to drill or deepen directionally, give pertinent data on subsurface locations and measured and true vertical depths. Give blowout preventer program, if any.

24.

SIGNED

RUDY D. MOTTO

TITLE Field Operations Manager

DATE September 6, 1982

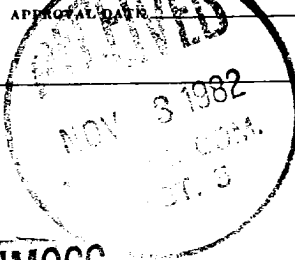
(This space for Federal or State office use)

PERMIT NO.

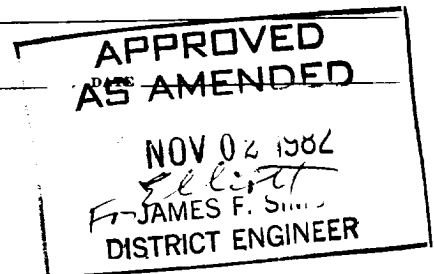
APPROVED BY

CONDITIONS OF APPROVAL, IF ANY:

TITLE



NMOC



**NEW MEXICO OIL CONSERVATION COMMISSION
WELL LOCATION AND ACREAGE DEDICATION PLAT**

Form C-102
Supersedes C-11
Effective 1-1-65

All distances must be from the outer boundaries of the Section.

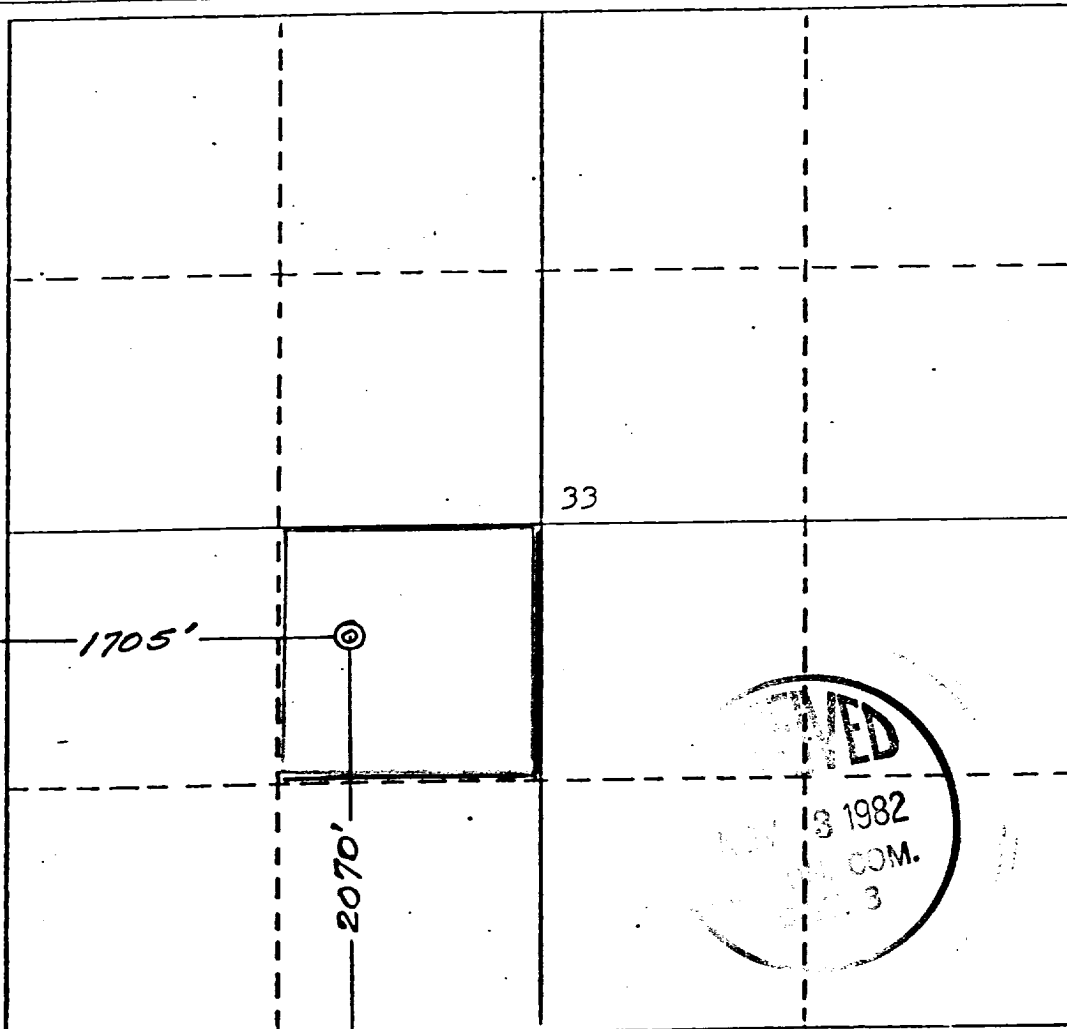
| | | | | | |
|--|--------------------------------------|----------------------------------|-------------------------|--|-----------------------|
| Operator UNION TEXAS PETROLEUM CORP. | | | Lease ZACHRY | | Well No. 33 |
| Unit Letter K | Section 33 | Township 29 NORTH | Range 10 WEST | County SAN JUAN | |
| Actual Footage Location of Well: | | | | | |
| 2070 | | feet from the SOUTH | line and 1705 | feet from the WEST | line |
| Ground Level Elev. 5767 | Producing Formation GALLUP | Pool Armenta Extension | | Dedicated Acreage: NE SW 40.00 | Acreage |

1. Outline the acreage dedicated to the subject well by colored pencil or hachure marks on the plat below.
2. If more than one lease is dedicated to the well, outline each and identify the ownership thereof (both as to working interest and royalty).
3. If more than one lease of different ownership is dedicated to the well, have the interests of all owners been consolidated by communitization, unitization, force-pooling, etc?

☐ Yes ☐ No If answer is "yes," type of consolidation _____

If answer is "no," list the owners and tract descriptions which have actually been consolidated. (Use reverse side of this form if necessary.) _____

No allowable will be assigned to the well until all interests have been consolidated (by communitization, unitization, forced-pooling, or otherwise) or until a non-standard unit, eliminating such interests, has been approved by the Commission.



CERTIFICATION

I hereby certify that the information contained herein is true and complete to the best of my knowledge and belief.

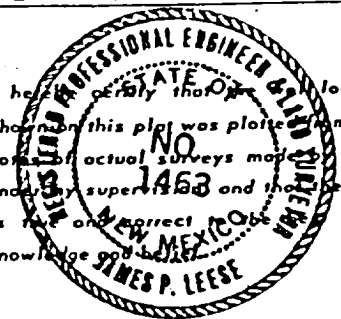
Name
Rudy D. Motto

Position
Area Operations Manager

Company
Union Texas Petroleum Corp

Date
August 4, 1982

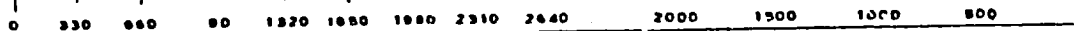
I hereby certify that the location shown on this plat was plotted from field notes of actual surveys made by me or under my supervision and that the same is true and correct to the best of my knowledge and belief.



Date Surveyed
July 30, 1982

Registered Professional Engineer
and/or Land Surveyor

James P. Leese
Certificate No.
1463



UNION TEXAS PETROLEUM CORP.
Zachry #33
NE $\frac{1}{4}$ SW $\frac{1}{4}$, Sec. 33, T29N, R10W, NMPM
San Juan County, New Mexico

