

UNITED STATES
DEPARTMENT OF THE INTERIOR
GEOLOGICAL SURVEY

30-045-25512

APPLICATION FOR PERMIT TO DRILL, DEEPEN, OR PLUG BACK

1a. TYPE OF WORK DRILL <input checked="" type="checkbox"/> DEEPEN <input type="checkbox"/> PLUG BACK <input type="checkbox"/>		5. LEASE DESIGNATION AND SERIAL NO. SF 047020-B
b. TYPE OF WELL OIL WELL <input checked="" type="checkbox"/> GAS WELL <input type="checkbox"/> OTHER <input type="checkbox"/> SINGLE ZONE <input checked="" type="checkbox"/> MULTIPLE ZONE <input type="checkbox"/>		6. IF INDIAN, ALLOTTEE OR TRIBE NAME
2. NAME OF OPERATOR Union Texas Petroleum Corporation		7. UNIT AGREEMENT NAME
3. ADDRESS OF OPERATOR P.O. Box 808, Farmington, New Mexico 87499		8. FARM OR LEASE NAME Congress
4. LOCATION OF WELL (Report location clearly and in accordance with any State requirements) At surface 1905 ft./South and 830 ft./East Line At proposed prod. zone Same as above		9. WELL NO. 11
14. DISTANCE IN MILES AND DIRECTION FROM NEAREST TOWN OR POST OFFICE* 2-1/2 miles Southeast of Bloomfield, New Mexico		10. FIELD AND POOL, OR WILDCAT Wildcat Gallup
15. DISTANCE FROM PROPOSED* LOCATION TO NEAREST PROPERTY OR LEASE LINE, FT. (Also to nearest drlg. unit line, if any) 830 ft. 830 ft.		11. SEC., T., R., M., OR BLK. AND SURVEY OR AREA I Sec. 35, T29N, R11W, N.M.P.M.
16. NO. OF ACRES IN LEASE 1183.91		12. COUNTY OR PARISH San Juan
17. NO. OF ACRES ASSIGNED TO THIS WELL 40.00		13. STATE New Mexico
18. DISTANCE FROM PROPOSED LOCATION* TO NEAREST WELL, DRILLING, COMPLETED, OR APPLIED FOR, ON THIS LEASE, FT. 1200 ft.		19. PROPOSED DEPTH 5980 ft.
20. ROTARY OR CABLE TOOLS Rotary		21. ELEVATIONS (Show whether DF, RT, GR, etc.) 569 Gr.
22. APPROX. DATE WORK WILL START* October 25, 1982		

PROPOSED CASING AND CEMENTING PROGRAM

SIZE OF HOLE	SIZE OF CASING	WEIGHT PER FOOT	SETTING DEPTH	QUANTITY OF CEMENT
13-3/4"	New 10-3/4"	40.55 K-55	300 ft.	245 cu. ft. (Circulated)
9-7/8"	New 7-5/8"	26.40 K-55	4730 ft.	1440 cu. ft. (Cover the Ojo Alamo)
6-3/4"	New 5-1/2"	15.50 J-55	4530' to 5980'	140 cu. ft. (Top of the liner)

We desire to drill surface hole to approximately 300 ft. using natural mud as a circulating medium. Set new pipe to T.D. and cement with Class "B" cement circulated to surface. W.O.C. Pressure test the casing to 800 PSIG for 15 min. Drill intermediate hole to approximately 4730 ft. Log the well. Run pipe to T.D. with a D.V. tool at approximately 2000 ft. Cement 1st stage with approximately 620 cu. ft. of 65/35/6 followed by approximately 90 cu. ft. of Class "B" cement. 2nd stage with approximately 640 cu. ft. of 65/35/12 followed by approximately 90 cu. ft. of Class "B" cement. W.O.C. Drill out D.V. tool. Pressure test the csg. to approximately 1500# for 10 minutes. Drill to T.D. of approximately 5980 ft. using natural gal as the circulating medium. Log the well. Run pipe from approximately 4530 ft. to 5980 ft. and hang off with a hanger. Cement with approximately 140 cu. ft. of 50-50 pozmix. Pressure test the casing. Perf and frac the Gallup zone. Clean the well up. Run new 2-3/8", 4.7#, J-55 EUE tbg. to the Gallup zone. Nipple down the well head. Run pump and rods. Set pumping unit and tank. Test well. Connect to a gathering system.

The gas from this well has previously been dedicated to a purchaser.

IN ABOVE SPACE DESCRIBE PROPOSED PROGRAM: If proposal is to deepen or plug back, give data on present productive zone and proposed new productive zone. If proposal is to drill or deepen directionally, give pertinent data on subsurface locations and measured and true vertical depths. Give blowout preventer program, if any.

24. SIGNED Rudy D. Motto TITLE Field Operations Manager DATE October 5, 1982

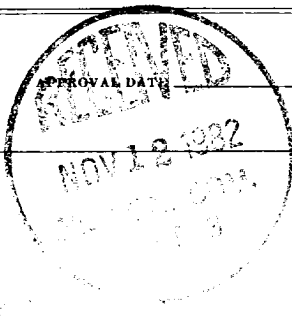
(This space for Federal or State office use)

PERMIT NO.

APPROVED BY

CONDITIONS OF APPROVAL, IF ANY:

TITLE

APPROVED
AS AMENDEDNOV 09 1982
For JAMES F. SIMS
DISTRICT ENGINEER

**NEW MEXICO OIL CONSERVATION COMMISSION
WELL LOCATION AND ACREAGE DEDICATION PLAT**

Form C-102
Supersedes C-126
Effective 1-1-85

All distances must be from the outer boundaries of the Section.

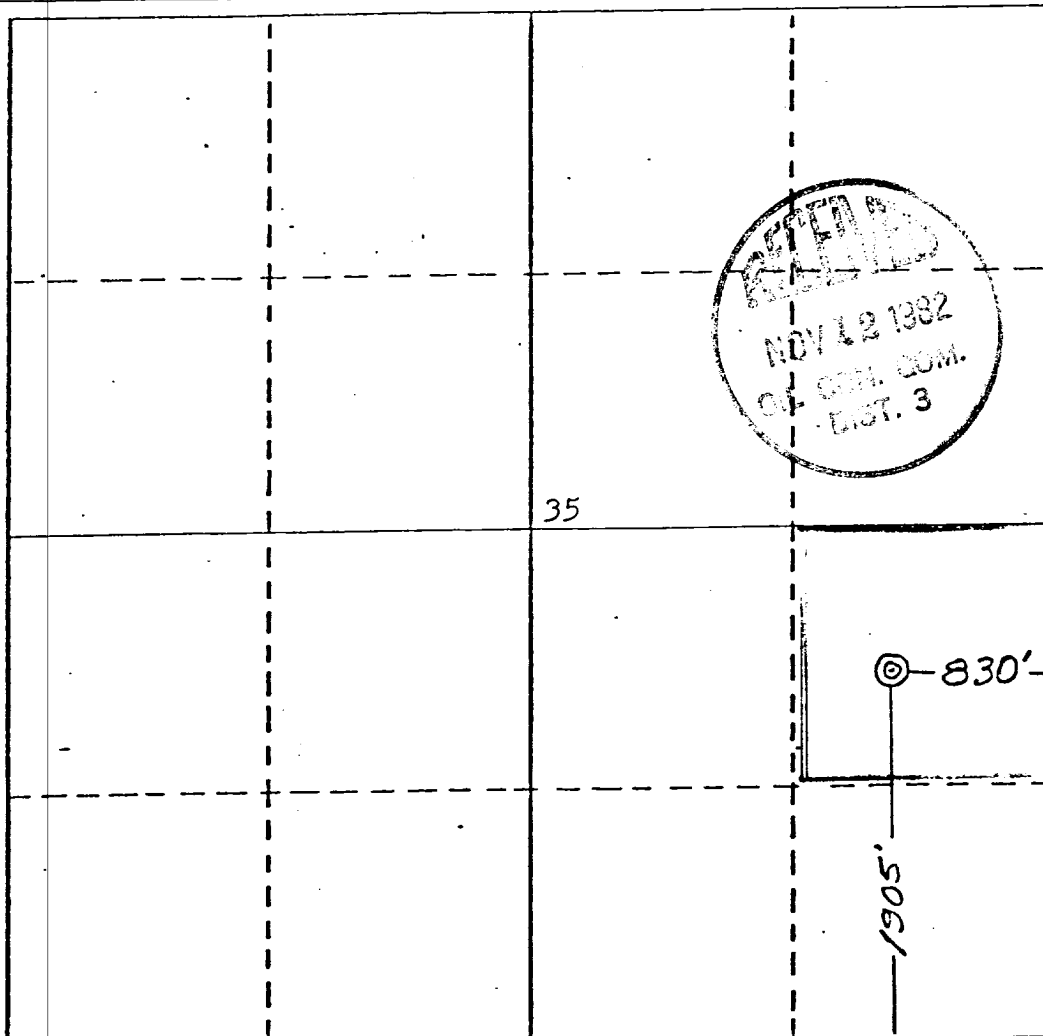
Operator UNION TEXAS PETROLEUM CORP.			Lease CONGRESS		Well No. 11
Unit Letter I	Section 35	Township 29 NORTH	Range 11 WEST	County San Juan	
Actual Footage Location of Well: 1905 feet from the SOUTH line and 830 feet from the EAST line					
Ground Level Elev. 5693	Producing Formation GALLUP	Pool WILDCAT		Dedicated Acreage: NESE 40.00 Acres	

1. Outline the acreage dedicated to the subject well by colored pencil or hachure marks on the plat below.
2. If more than one lease is dedicated to the well, outline each and identify the ownership thereof (both as to working interest and royalty).
3. If more than one lease of different ownership is dedicated to the well, have the interests of all owners been consolidated by communitization, unitization, force-pooling, etc?

☐ Yes ☐ No If answer is "yes," type of consolidation _____

If answer is "no," list the owners and tract descriptions which have actually been consolidated. (Use reverse side of this form if necessary.) _____

No allowable will be assigned to the well until all interests have been consolidated (by communitization, unitization, forced-pooling, or otherwise) or until a non-standard unit, eliminating such interests, has been approved by the Commission.



CERTIFICATION

I hereby certify that the information contained herein is true and complete to the best of my knowledge and belief.

Rudy D. Motto
Name

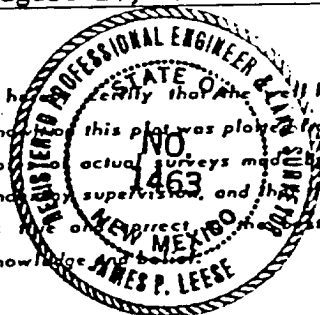
Rudy D. Motto
Position

Field Operations Manager
Company

Union Texas Petroleum
Date

August 24, 1982

I hereby certify that the well location shown on this plat was plotted from field notes, actual surveys made by me or under my supervision, and that the same is true and correct to the best of my knowledge and belief.



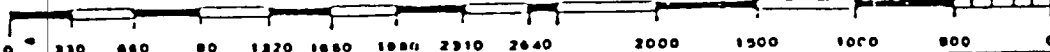
Date Surveyed
July 28, 1982

Registered Professional Engineer
and/or Land Surveyor

James P. Leese
James P. Leese

Certificate No.

1463



UNION TEXAS PETROLEUM CORP.
CONGRESS #11
NE 1/4 SE 1/4, Sec. 35, T29N, R11W, NMPM
San Juan County, New Mexico

