

submitted in lieu of Form 3160-5

UNITED STATES  
DEPARTMENT OF THE INTERIOR  
BUREAU OF LAND MANAGEMENT

Sundry Notices and Reports on Wells

070 FARMINGTON, NM

Lease Number

SF-080724A

1. Type of Well  
GAS

6. If Indian, All. or  
Tribe Name

2. Name of Operator  
MERIDIAN OIL

7. Unit Agreement Name

3. Address & Phone No. of Operator  
PO Box 4289, Farmington, NM 87499 (505) 326-9700

8. Well Name & Number  
Zachry #50

9. API Well No.

4. Location of Well, Footage, Sec., T, R, M  
1846' FNL, 621' FWL, Sec.35, T-29-N, R-10-W, NMPM

10. Field and Pool  
Armenta G1/Blanco MV

11. County and State  
San Juan Co, NM

12. CHECK APPROPRIATE BOX TO INDICATE NATURE OF NOTICE, REPORT, OTHER DATA

Type of Submission

Type of Action

☒ Notice of Intent

☐ Abandonment

☐ Change of Plans

☐ Subsequent Report

☒ Recompletion

☐ New Construction

☐ Final Abandonment

☐ Plugging Back

☐ Non-Routine Fracturing

☐ Casing Repair

☐ Water Shut off

☐ Altering Casing

☐ Conversion to Injectio

☒ Other - add MV formation and dual w/G1

13. Describe Proposed or Completed Operations

It is intended to complete the Mesa Verde formation in this Gallup well and produce this well as a dual. Attached is a procedure and wellbore diagram.

RECEIVED

JAN 28 1994

OIL CON. DIV.  
DIST. 3

14. I hereby certify that the foregoing is true and correct.

Signed [Signature] (SD) Title Regulatory Affairs Date 1/9/94

(This space for Federal or State Office use)

APPROVED BY \_\_\_\_\_ Title \_\_\_\_\_

CONDITION OF APPROVAL, if any:

APPROVED

Date 1/9/94

DISTRICT MANAGER

NMOCD

Submit to Any Applicant  
District Office -  
State Lands - 4 copies -  
Fee Lands - 3 (copies)

State of New Mexico  
Energy, Minerals and Natural Resources Department

RECEIVED  
BLM  
FEB 11 1994

OIL CONSERVATION DIVISION

P.O. Box 2088

Santa Fe, New Mexico 87504-2088

54 JAN 13 PM 2:50

070 FARMINGTON, NM

DISTRICT I  
P.O. Box 1900, Hobbs, NM 88240

DISTRICT II  
P.O. Drawer 90, Azusa, NM 88210

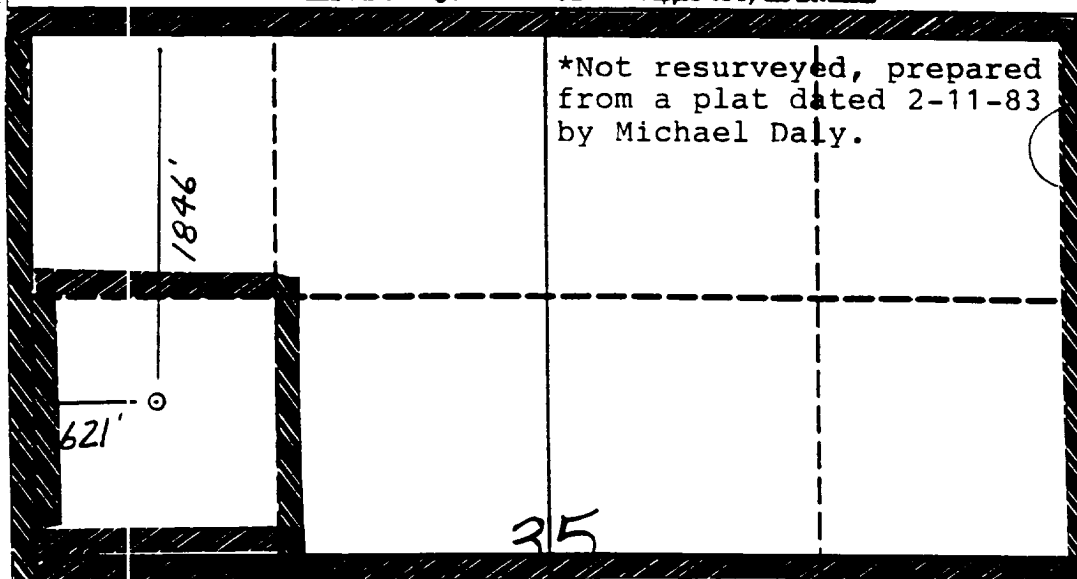
DISTRICT III  
1000 Rio Bonito Rd., Azusa, NM 87430

WELL LOCATION AND ACREAGE DEDICATION PLAT

All Distances must be from the outer boundaries of the section

Operator Meridian Oil Inc.		Lease Zachry		Well No. 50
U.S. Letter E	Section 35	Township 29 North	Range 10 West	County San Juan
Actual Survey Dimensions of Well: 1846 North 621 West feet from the line and feet from the line				
Ground level Elev. 5633'	Producing Formation Mesa Verde/Gallup	Pool Blanco/Armenta	Dedicated Acreage 320/40 Acres	

1. Outline the acreage dedicated to the subject well by colored pencil or ink on the plat below.
2. If more than one lease is dedicated to the well, outline each and identify the ownership thereof (both as to working interest and royalty).
3. If more than one lease of different ownership is dedicated to the well, have the interest of all owners been consolidated by commutation, unitization, force-pooling, etc.?  
☐ Yes ☐ No If answer is "yes" type of consolidation: \_\_\_\_\_  
If answer is "no" list the owners and their descriptions which have actually been consolidated. (Use reverse side of this form if necessary.)  
No allowable well be assigned to the well until all interests have been consolidated (by commutation, unitization, force-pooling, or otherwise) or until a non-standard unit, eliminating such interest, has been approved by the Division.



OPERATOR CERTIFICATION

I hereby certify that the information contained herein is true and complete to the best of my knowledge and belief.

*Peggy Bradford*  
Signature

Peggy Bradford

Printed Name

Regulatory Representative

Position

Meridian Oil Inc.

Company

1-12-94

Date

SURVEYOR CERTIFICATION

I hereby certify that the well location shown on this plat was plotted from field notes of actual surveys made by me or under my supervision, and that the same is true and correct to the best of my knowledge and belief. 1-11-93

Date Surveyed  
Needle Creek  
Signature of Surveyor  
Professional Surveyor

9857

RECEIVED

JAN 28 1994

OIL CON. DIV.  
DIST

**Pertinent Data Sheet - Zachry #50**

**Location:** 1846' FNL, 621 FWL, Section 35, T29N, R10W, San Juan County, New Mexico

**Field:** Armenta Gallup

**Elevation:** 5645' RKB

**TD:** 6060'

**PBTD:** 6014'

**GWl:** 87.500%

**NRI:** 72.875%

**Completed:** 05-16-83

**Initial Potential:**

27 BOPD

175 MCF/D

**DP #:** 32466A - GP

**Casing Record:**

<u>Hole Size</u>	<u>Csg Size</u>	<u>Wt. &amp; Grade</u>	<u>Depth Set</u>	<u>Cement</u>	<u>Top/Cement</u>
13 3/4"	9 5/8"	36.0# K-55	349'	325 cf	Surface/Circ
8 3/4"	7"	23.0# K-55	5332'	1534 cf	2068' (Circ)
6 1/4"	4 1/2"	10.5# K-55	5150' - 6060'	168 cf	5150' (CBC)
		DV Tool @	2067' w/	1984 cf	Surface/Circ

**Tubing Record:**

<u>Tbg Size</u>	<u>Wt. &amp; Grade</u>	<u>Depth Set</u>
2 3/8"	4.7# J-55	5903'

**Formation Tops:**

Ojo Alamo:	740'	Chacra:	2540'
Kirtland:	920'	Cliffhouse:	3480'
Fruitland:	1560'	Point Lookout:	4240'
Pictured Cliffs:	1900'	Gallup:	5400'
Lewis:	2000'		

**Logging Record:** CDL-CNL-GR, DIL-GR

**Stimulation:**

Perforated 5846' - 5991', broke down with 6,000 gal 15% HCL.  
Fractured with 48,600# sand and 39,000 gal 75Q foam.

Perforated 5416' - 5738', broke down with 33,000 gal 15% HCL.  
Fractured with 235,000# sand and 204,585 gal 75Q foam.

**Workover History:** None.

**Production History:**

Gallup: Cumulative of 174 MMCF , 6.7 MBO and latest production of 15 MCF/D.

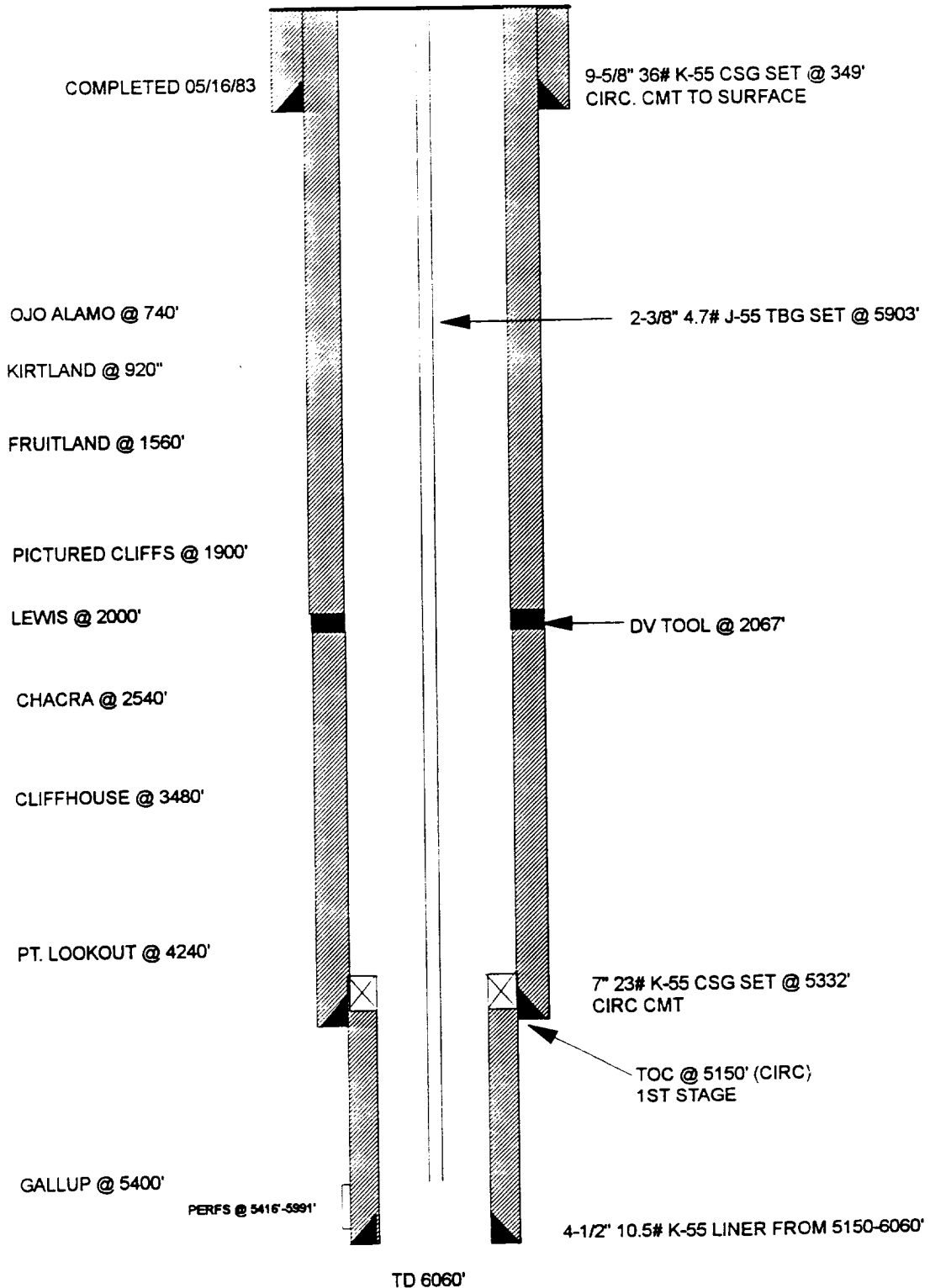
**Transporter:** Oil: Meridian Oil Inc.

# ZACHRY # 50

CURRENT

ARMENTA GALLUP

UNIT E, SEC 35, T29N, R10W, SAN JUAN COUNTY, NM

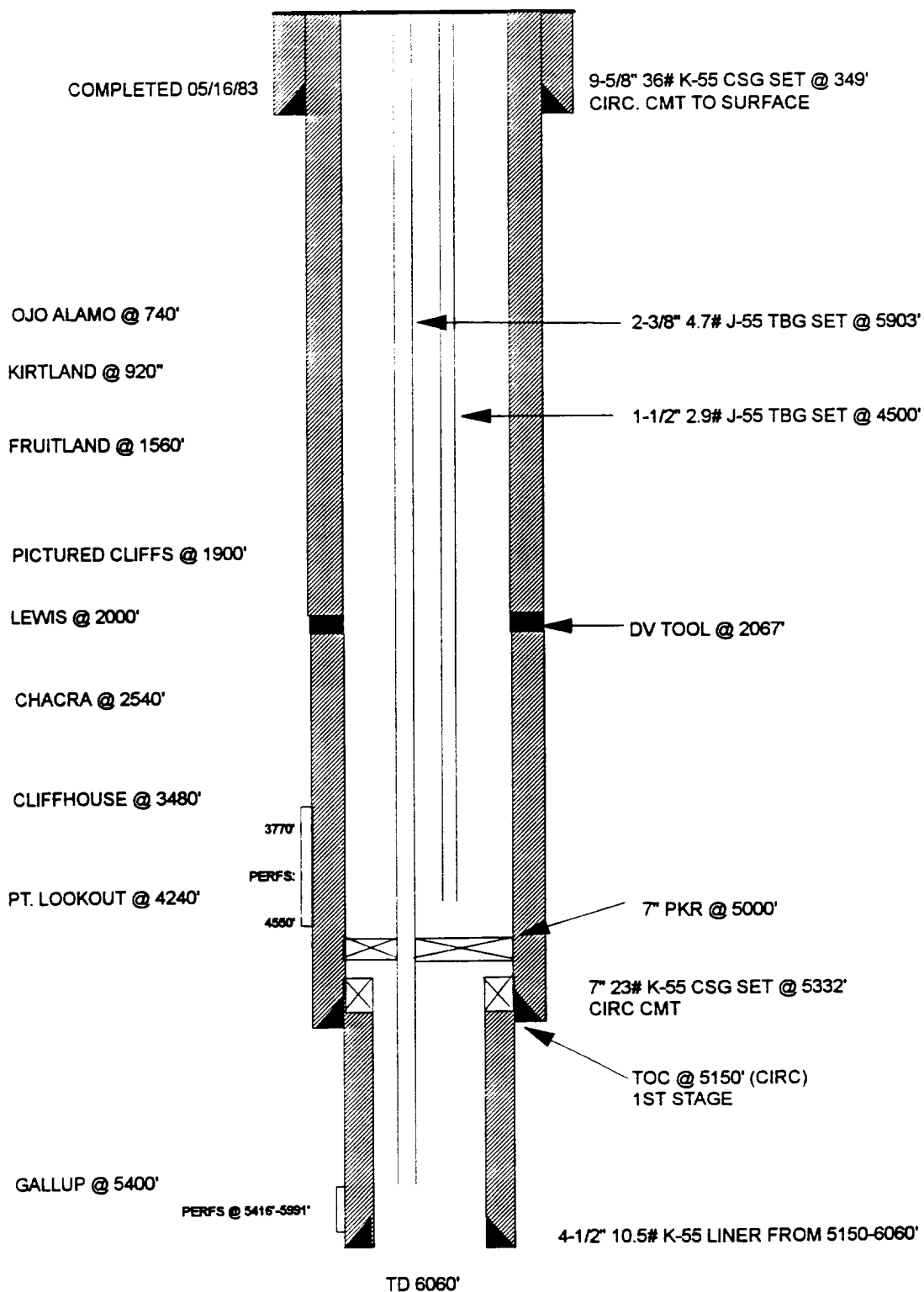


# ZACHRY # 50

## PROPOSED

ARMENTA GALLUP / BLANCO MESAVERDE

UNIT E, SEC 35, T29N, R10W, SAN JUAN COUNTY, NM



Zachry # 50  
Recommend Recompletion Procedure  
Unit E Section 35 T29N R10W

1. Test rig anchors and repair if necessary. Install 15-400 bbl frac tanks on location and fill with water for fracture treatment. Add 5# of biocide to each tank before filling.
2. MOL and RU. Comply to all NMOCD, BLM and MOI rules & regulations. Hold safety meeting. ND wellhead. NU BOP. Test operation of rams. NU two relief lines.
3. TOOH w/ 5903' of 2-3/8" tbg. Visually inspect for and replace all bad jts. TIH w/ 7" 23# csg scraper and 6-1/8" bit and CO to 5050'. TOOH. Set 7" RBP @ 4750'. Load hole with fresh water. TOOH.
4. RU wireline and run CBL/CCL/GR from PBTD (4750') to 2000' under 1000 psi surface pressure. TIH w/ 7" full-bore packer and 60' tubing and pressure test casing to 3400 psi. If pressure test does not hold, TIH with packer and tubing and locate failure. Contact Production Engineering and a repair procedure will be provided. Release packer and TOOH.

**\*\*\*Point Lookout\*\*\***

5. Perforate w/ 4" Select-Fire HSC w/ centralizers and charges meeting requirements for average penetration in Berea of 12.0" & average perf diameter of 0.33". Perf top down the following Point Lookout intervals w/ 1 spf .

4186'	4221'	4240'
4244"	4252'	4264'
4270'	4274'	4295'
4297'	4300'	4306'
4332'	4374'	4377'
4446'	4448'	4473'
4488'	4522'	4550'

Total: 21 holes.

6. TIH w/ 7" full bore pkr on 2-3/8" tbg and set @ 4000'. RU stimulation company and prepare to breakdown and balloff with acid. Pump 2500 gal. of 15% HCl @ 4 bbl/min. Drop a total of 42 7/8" 1.3 sp. gr. RCN ball sealers spaced evenly throughout the job. Record injection rate and all breakdown pressures throughout job. **Maximum pressure is 4000 psi.** Acid should contain clay stabilizer, corrosion inhibitor, and iron sequestering agent. TOOH w/ tbg and pkr.
7. RU wireline. RIH with junk basket and retrieve ball sealers. Record number of hits and balls recovered.

Zachry # 50  
Recommend Recompletion Procedure  
Unit E Section 35 T29N R10W  
Page 2

8. TIH w/ 7" full-bore packer and set at approx 60'. RU stimulation company. Hold safety meeting. Pressure test surface lines to 4400 psi (1000 psi over maximum allowable treating pressure but no greater than working pressure of surface lines). **Maximum treating pressure is 3400 psi.** Fracture Point Lookout according to attached procedure. **Stimulation will be limited entry (approximately 2 bpm/perf), slickwater, 500-1700 lbs./ft. pay with maximum sand concentration of 1.5 ppg and 40-50% pad volume.** Tag sand with 0.4 mCi/1000# Ir-192 tracer. Shut-in well immediately after stimulating well to keep in static condition. Release packer and TOOH.
9. RU wireline. Set 7" RBP at 4170'. Run dump bailer and dump 2 sxs sand on BP. TIH w/ 7" full-bore packer and set at approx 60'; test bridge plug and casing to 3400 psi for 15 minutes. Release packer and TOOH.

\*\*\*Menefee\*\*\*

10. Perforate w/ 4" Select-Fire HSC w/ centralizers and charges meeting requirements for average penetration in Berea of 12.0" & average perf diameter of 0.33". Perf **top down** the following Menefee intervals w/ 1 spf .

3772'	3774'	3776'
3778'	3830'	3832'
3851'	3871'	3884'
3907'	3908'	3910'
3912'	3914'	3918'
3930'	3932'	3933'
4021'	4023'	4026'
4115'		

Total: 22 holes.

11. TIH w/ 7" full bore pkr on 2-3/8" tbg and set @ 3500'. RU stimulation company and prepare to breakdown and balloff with acid. Pump 2500 gal. of 15% HCl @ 4 bbl/min. Drop a total of 44 7/8" 1.3 sp. gr. RCN ball sealers spaced evenly throughout the job. Record injection rate and all breakdown pressures throughout job. **Maximum pressure is 4000 psi.** Acid should contain clay stabilizer, corrosion inhibitor, and iron sequestering agent. Release packer and TOOH.
12. RU wireline. RIH with junk basket and retrieve ball sealers. Record number of hits and balls recovered.
13. TIH w/ 7" full-bore packer and set at approx 60'. RU stimulation company. Hold safety meeting. Pressure test surface lines to 4400 psi (1000 psi over maximum allowable treating pressure but no greater than working pressure of surface lines). **Maximum treating pressure is 3400 psi.** Fracture Menefee according to attached procedure. **Stimulation will be limited entry (approximately 2 bpm/perf), slickwater, 500-1500 lbs./ft. pay with maximum sand concentration of 1.5 ppg and 40-50% pad volume.** Tag sand with 0.4 mCi/1000# Ir-192 tracer. Release packer and TOOH.

Zachry # 50  
Recommend Recompletion Procedure  
Unit E Section 35 T29N R10W  
Page 3

14. Flow back well (if needed) until returns diminish. TIH with retrieving head and 2-3/8" tubing and clean out to RBP @ 4170' until sand returns and water production are minimal. Obtain pitot gauges. Release bridge plug and TOOH.
15. TIH with retrieving head and 2-3/8" tubing and clean out to RBP @ 4750' until sand returns and water production are minimal. Obtain pitot gauges. Release bridge plug and TOOH.
16. Run After-Frac-Gamma-Ray log from 5150' - 3150'.
17. TIH w/ 2-3/8" tbg w/ seating nipple 1 jt off bottom and pump-off plug on bottom and set 7" Model "R" double grip production pkr @ 5000'. Land tbg string @ 5900'.
18. TIH w/ 1-1/2" tbg w/ seating nipple 1 jt off bottom and pump-off plug on bottom and land tbg string @ 4500'.
19. ND BOP and NU dual wellhead. Pump off plugs. **Take final Pitot gauge and gas & water samples.** Rig down & release rig.

Approve:

  
\_\_\_\_\_  
J. A. Howieson

VENDORS:

Wireline:

Petro

326-6669

Fracturing:

Western

327-6222

KAS:kas