

TO: BY EXPIRES RECEIVED	
DISTRIBUTION	
SANTA FE	
FILE	
U.S.G.S.	
LAND OFFICE	
OPERATOR	

RECEIVED

FEB 14 1983

OIL CON. DIV.

5A. Indicate Type of Lease
STATE ☐ FEDERAL ☒
5. State Oil & Gas Lease No.
N/A

APPLICATION FOR PERMIT TO DRILL, DEEPEN, OR PLUG BACK

a. Type of Work
b. Type of Well
DRILL ☒ DEEPEN ☐ PLUG BACK ☐
OIL WELL ☒ GAS WELL ☐ OTHER ☐ SINGLE ZONE ☐ MULTIPLE ZONE ☐

Name of Operator
LOBO PRODUCTION, P.O. Box 2364, Farmington, New Mexico 87499

Address of Operator
3005 Northridge, Suite I, Farmington, New Mexico 87401

Location of Well
UNIT LETTER 0 LOCATED 800 FEET FROM THE South LINE
1885 FEET FROM THE East LINE OF SEC. 7 TWP. 29N RGE. 14W

7. Unit Agreement Name
8. Farm or Lease Name
Hynes - Kennedy -7

9. Well No.
#1

10. Field and Pool, or Wildcat
Cha Cha - Gallup Ext

80

12. County
San Juan

1. Elevations (Show whether DF, RT, etc.) 5205 Gr.	21A. Kind & Status Plug. Bond One Well	19. Proposed Depth 4,850'	19A. Formation Gallup	20. Rotary or C.T. Rotary
		21B. Drilling Contractor Four Corners Drilling	22. Approx. Date Work will start 2-15-83	

PROPOSED CASING AND CEMENT PROGRAM

SIZE OF HOLE	SIZE OF CASING	WEIGHT PER FOOT	SETTING DEPTH	SACKS OF CEMENT	EST. TOP
12 1/4"	8 5/8"	24#	200'	250	
7 7/8"	4 1/2"	10.50 #	4850'	800	

Will drill 12 1/4" hole to 200 ft. and set 200' of 8 5/8" 24# casing with 250 sacks of cement. Will drill 7 7/8" hole to 4,850' and run open hole logs. If appears productive, will run 4,850' of 4 1/2" 10.50# new casing and cement with 800 sacks. Will perforate and stimulate as required. Minimum specifications for pressure control equipment which is to be used; 10", 900 series double ram BOP.

ESTIMATED TOPS

FORMATION	DEPTH	CONTENT
Pic. Cliff	320'	Water
Cliff House	1,470'	Water
Menefee	2,100'	Water (Possible Gas)
Pt. Lookout	3,000'	Water
Mancos	3,265'	Shale
Gallup	4,213'	Oil & Gas

RECEIVED

FEB 8 - 1983

OIL CON. DIV.
DIST. 3

ABOVE SPACE DESCRIBE PROPOSED PROGRAM; IF PROPOSAL IS TO DEEPEN OR PLUG BACK, GIVE DATA ON PRESENT PRODUCTIVE ZONE AND PROPOSED NEW PRODUCTION ZONE. GIVE BLOWOUT PREVENTER PROGRAM, IF ANY.

I hereby certify that the information above is true and complete to the best of my knowledge and belief.

By R. E. Fournier Title Operator Date 2-4-83

(This space for State Use)

SUPERVISOR DISTRICT # 3

APPROVED BY [Signature] TITLE _____ DATE FEB 25 1983

CONDITIONS OF APPROVAL, IF ANY:

APPROVAL BY August 25, 1983
HOLDING PERMIT IS COMPLETED.
\$500 NOTICE MUST BE SUBMITTED
WITHIN 10 DAYS.

All distances must be from the outer boundaries of the Section.

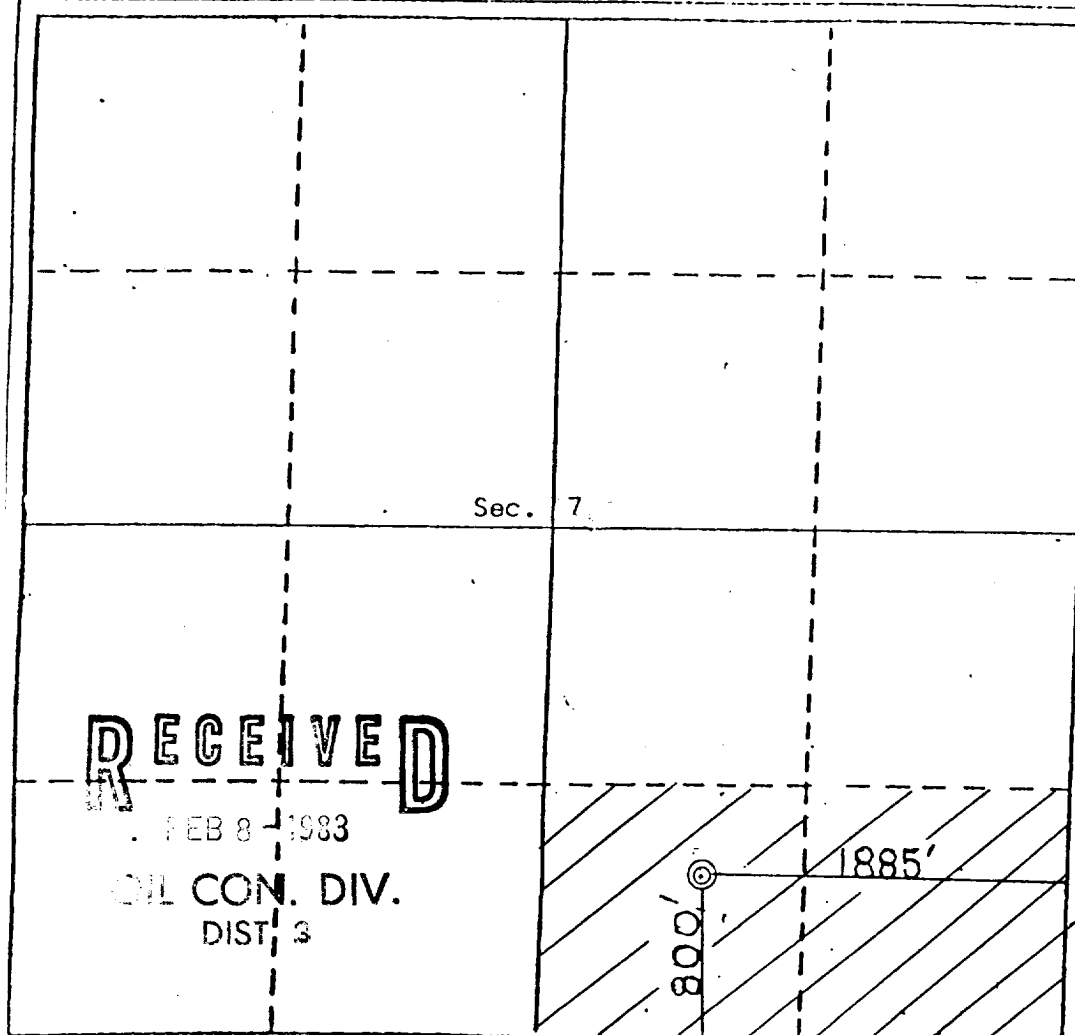
Operator LOBO PRODUCTION			Lease HYNES-KENNEDY-7		Well No. 1
Unit Letter 0	Section 7	Township 29 NORTH	Range 14 WEST	County SAN JUAN	
Actual Footage Location of Well:					
800 feet from the SOUTH line and		1885 feet from the EAST line			
Ground Level Elev. 5205	Producing Formation GALLUP	Pool CHA-CHA GALLUP	Ext.		Dedicated Acreage: 90

1. Outline the acreage dedicated to the subject well by colored pencil or hatchure marks on the plat below.
2. If more than one lease is dedicated to the well, outline each and identify the ownership thereof (both as to working interest and royalty).
3. If more than one lease of different ownership is dedicated to the well, have the interests of all owners been consolidated by communitization, unitization, force-pooling, etc?

☐ Yes ☐ No If answer is "yes," type of consolidation _____

If answer is "no," list the owners and tract descriptions which have actually been consolidated. (Use reverse side of this form if necessary.) _____

No allowable will be assigned to the well until all interests have been consolidated (by communitization, unitization, forced-pooling, or otherwise) or until a non-standard unit, eliminating such interests, has been approved by the Division.



CERTIFICATION

I hereby certify that the information contained herein is true and complete to the best of my knowledge and belief.

R E Lauritsen

Name
R E Lauritsen

Position
Partner
Lobo Production

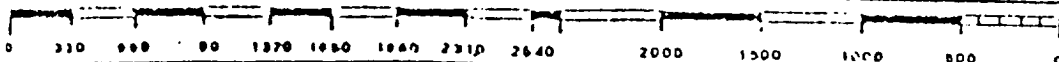
Company
Lobo Production

Date
2-10-83

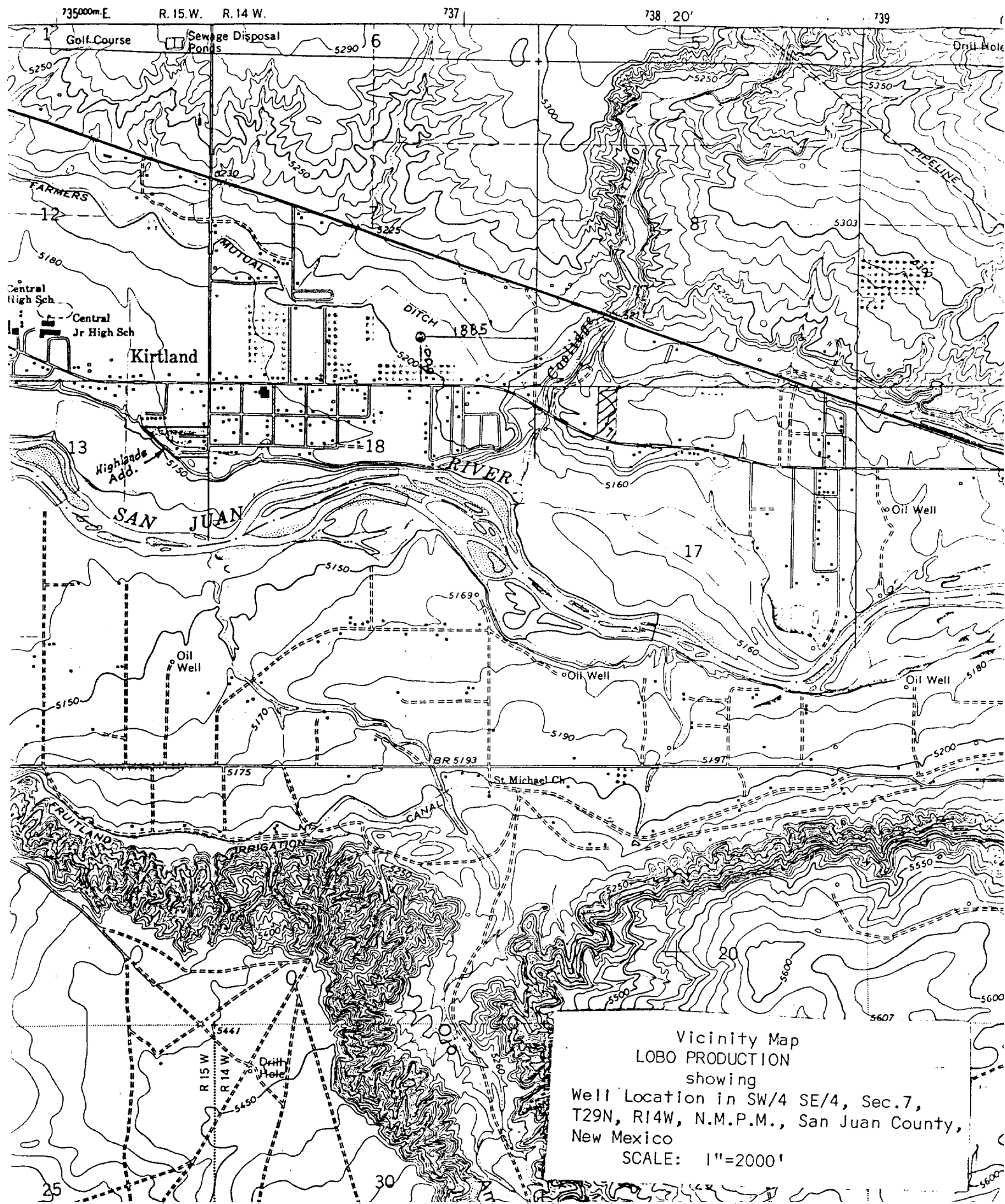
I hereby certify that the well location shown on this plat was plotted from field notes of actual surveys made by me or under my supervision, and that the same is true and correct to the best of my knowledge and belief.

REGISTERED LAND SURVEYOR
JAN 31 1983
Curran C. Stucking
Registered Professional Engineer
and/or Land Surveyor
Curran C. Stucking

Certificate No.
5980



UNITED STATES
DEPARTMENT OF THE INTERIOR
GEOLOGICAL SURVEY



Vicinity Map
LOBO PRODUCTION
showing
Well Location in SW/4 SE/4, Sec. 7,
T29N, R14W, N.M.P.M., San Juan County,
New Mexico
SCALE: 1"=2000'