

UNITED STATES  
DEPARTMENT OF THE INTERIOR  
GEOLOGICAL SURVEY

## APPLICATION FOR PERMIT TO DRILL, DEEPEN, OR PLUG BACK

## 1a. TYPE OF WORK

DRILL ☐DEEPEN ☐PLUG BACK ☐

## b. TYPE OF WELL

OIL  
WELL ☒GAS  
WELL ☐OTHER ☐

## 2. NAME OF OPERATOR

Union Texas Petroleum Corporation

## 3. ADDRESS OF OPERATOR

P. O. Box 808, Farmington, New Mexico 87401

## 4. LOCATION OF WELL (Report location clearly and in accordance with any State requirements)

At surface 825' FNL &amp; 825' FWL

At proposed prod. zone

Same

## 14. DISTANCE IN MILES AND DIRECTION FROM NEAREST TOWN OR POST OFFICE

4 miles Southeast of Bloomfield

## 15. DISTANCE FROM PROPOSED\*

LOCATION TO NEAREST

825 ft.

PROPERTY OR LEASE LINE, FT.

(Also to nearest drg. unit line, if any) 495 ft.

## 18. DISTANCE FROM PROPOSED LOCATION\*

TO NEAREST WELL, DRILLING, COMPLETED,  
OR APPLIED FOR, ON THIS LEASE, FT.

545 ft.

## 21. ELEVATIONS (Show whether DF, RT, GR, etc.)

5642 ft. (GL)

## 23.

## PROPOSED CASING AND CEMENTING PROGRAM

SIZE OF HOLE	SIZE OF CASING	WEIGHT PER FOOT	SETTING DEPTH	QUANTITY OF CEMENT
12-1/4"	9-5/8"	40.0#	300 ft.	188 cu. ft. (circulated)
8-3/4"	7"	23.0#	5250 ft.	1180 cu. ft. (circulated)
6-1/8"	4-1/2"	10/5#	5100' to 5906'	114 cu. ft. (top of liner)

We desire to drill 12-1/4" surface hole to approx. 300 ft. using natural mud as the circulating medium. Run new 9-5/8" casing to T.D. Cement with approx. 188 cu. ft. of Class "B" cement circulated to surface. Pressure test the casing. Drill 8-3/4" hole to approx. 5250 ft. T.D. using a permaloid, non-dispersed mud as the circulating medium. Log the well. Run new 7" casing to T.D. with a D.V. tool at 1825 ft. Cement 1st stage with approx. 660 cu. ft. of 65-35-6 followed by approx. 118 cu. ft. Class "B" cement with 2% CaCl. Cement 2nd stage with approx. 282 cu. ft. 65-35-12 followed by approx. 118 cu. ft. Class "B" cement with 2% CaCl circulated to surface. Drill out D.V. tool. Pressure test the casing. Drill out with 6-1/8" bit to approx. 5906 ft. using natural gas as the circulating medium. Log the well. Run new 4-1/2" casing to T.D. and cement with approx. 114 cu. ft. 50-50 poz to top of liner. Perforate and fracture the Gallup. Clean the well up. Run new 2-3/8" E.U.E., 4.7#, J55 tubing to the Gallup zone. Run rod pump and rods. Set a pumping unit and tanks. Test the well and connect to a gathering system. The gas from this well has previously been dedicated to a transporter.

IN ABOVE SPACE DESCRIBE PROPOSED PROGRAM: If proposal is to deepen or plug back, give data on present productive zone and proposed new productive zone. If proposal is to drill or deepen directionally, give pertinent data on subsurface locations and measured and true vertical depths. Give blowout preventer program, if any.

## 24.

SIGNED

W. K. Cooper

TITLE Field Operations Mgr.

(This space for Federal or State office use)

PERMIT NO.

APPROVAL DATE

APPROVED BY

TITLE

CONDITIONS OF APPROVAL, IF ANY:

DRILLING OPERATIONS AUTHORIZED ARE  
SUBJECT TO COMPLIANCE WITH ATTACHED  
"GENERAL REQUIREMENTS"

## 5. LEASE DESIGNATION AND SERIAL NO.

USA NM0702

## 6. IF INDIAN, ALLOTTEE OR TRIBE NAME

## 7. UNIT AGREEMENT NAME

## 8. FARM OR LEASE NAME

Reid "B"

## 9. WELL NO.

#4

## 10. FIELD AND POOL, OR WILDCAT

Undesignated Gallup

11. SEC., T., R., M., OR BLK.  
AND SURVEY OR AREA

Sec. 31, T-29N, R-10W N.M.I

## 12. COUNTY OR PARISH

San Juan

## 13. STATE

N.M.

17. NO. OF ACRES ASSIGNED  
TO THIS WELL

40.00

## 20. ROTARY OR CABLE TOOLS

Rotary

## 22. APPROX. DATE WORK WILL START\*

December 22, 1982

APPROVED, 1982

AS AMENDED

MAR 01 1983

JAMES F. SIMS  
DISTRICT ENGINEER

This action is subject to administrative  
appeal pursuant to 30 CFR 290.

NMOC

All distances must be from the outer boundaries of the Section.

Operator <b>UNION TEXAS PETROLEUM CORPORATION</b>		Lease <b>REID B</b>		Well No. <b>4</b>
Unit Letter <b>D</b>	Section <b>31</b>	Township <b>29 NORTH</b>	Range <b>10 WEST</b>	County <b>SAN JUAN</b>
Actual Footage Location of Well: <b>825'</b> feet from the <b>NORTH</b> line and <b>825</b> feet from the <b>WEST</b> line				
Ground Level Elev. <b>5642</b>	Producing Formation <b>GALLUP</b>	Pool <b>UNDESIGNATED</b>	Dedicated Acreage: <b>NW NW 40</b> Acres	

1. Outline the acreage dedicated to the subject well by colored pencil or hatchure marks on the plat below.

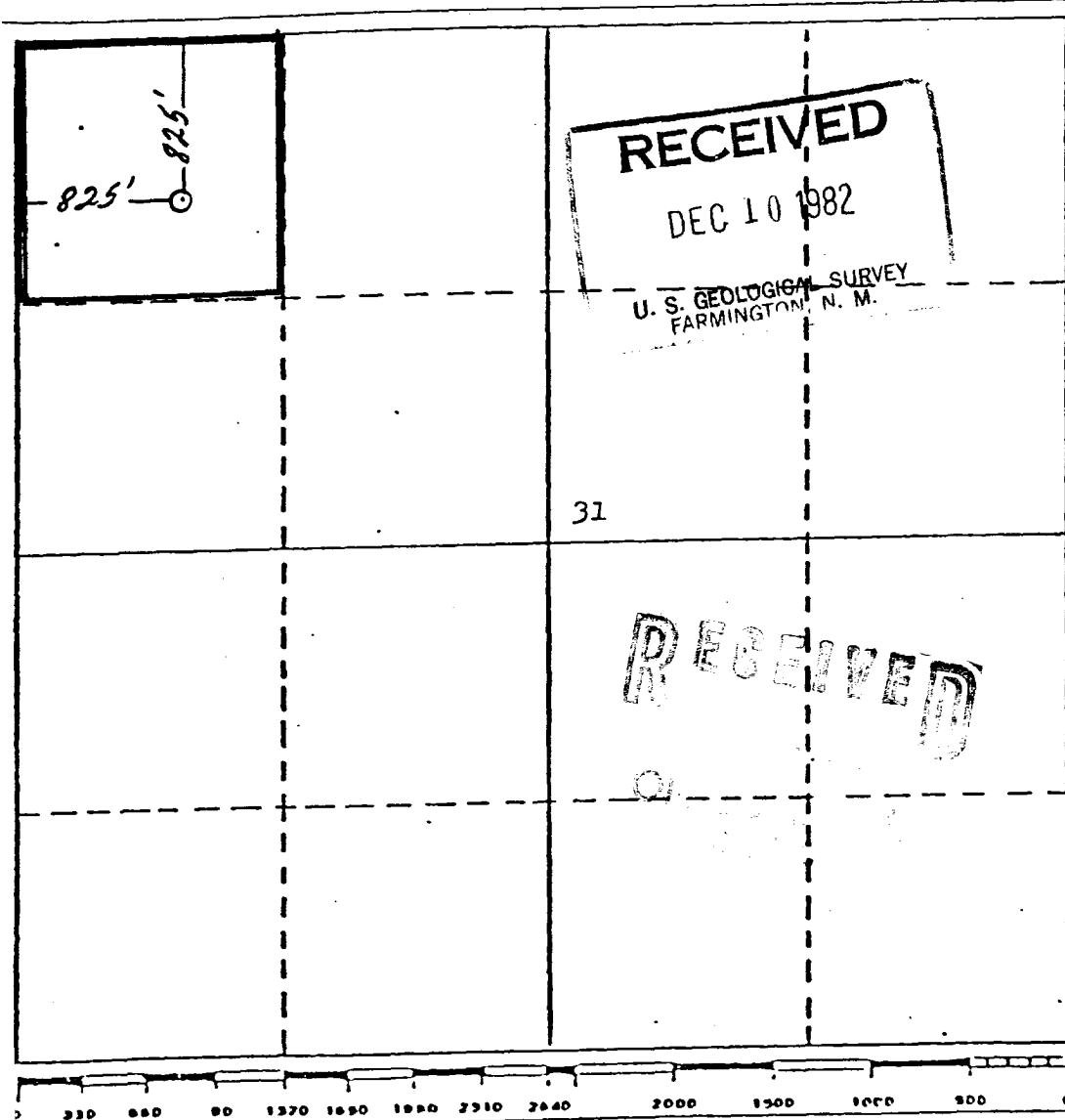
2. If more than one lease is dedicated to the well, outline each and identify the ownership thereof (both as to working interest and royalty).

3. If more than one lease of different ownership is dedicated to the well, have the interests of all owners been consolidated by communitization, unitization, force-pooling, etc?

☐ Yes ☒ No If answer is "yes," type of consolidation \_\_\_\_\_

If answer is "no," list the owners and tract descriptions which have actually been consolidated. (Use reverse side of this form if necessary.) \_\_\_\_\_

No allowable will be assigned to the well until all interests have been consolidated (by communitization, unitization, forced-pooling, or otherwise) or until a non-standard unit, eliminating such interests, has been approved by the Division.



## CERTIFICATION

I hereby certify that the information contained herein is true and complete to the best of my knowledge and belief.

*Rudy D. Motto*  
Name

Rudy D. Motto

Position

Area Field Manager

Company

Union Texas Petroleum Corp

Date

11-3-82

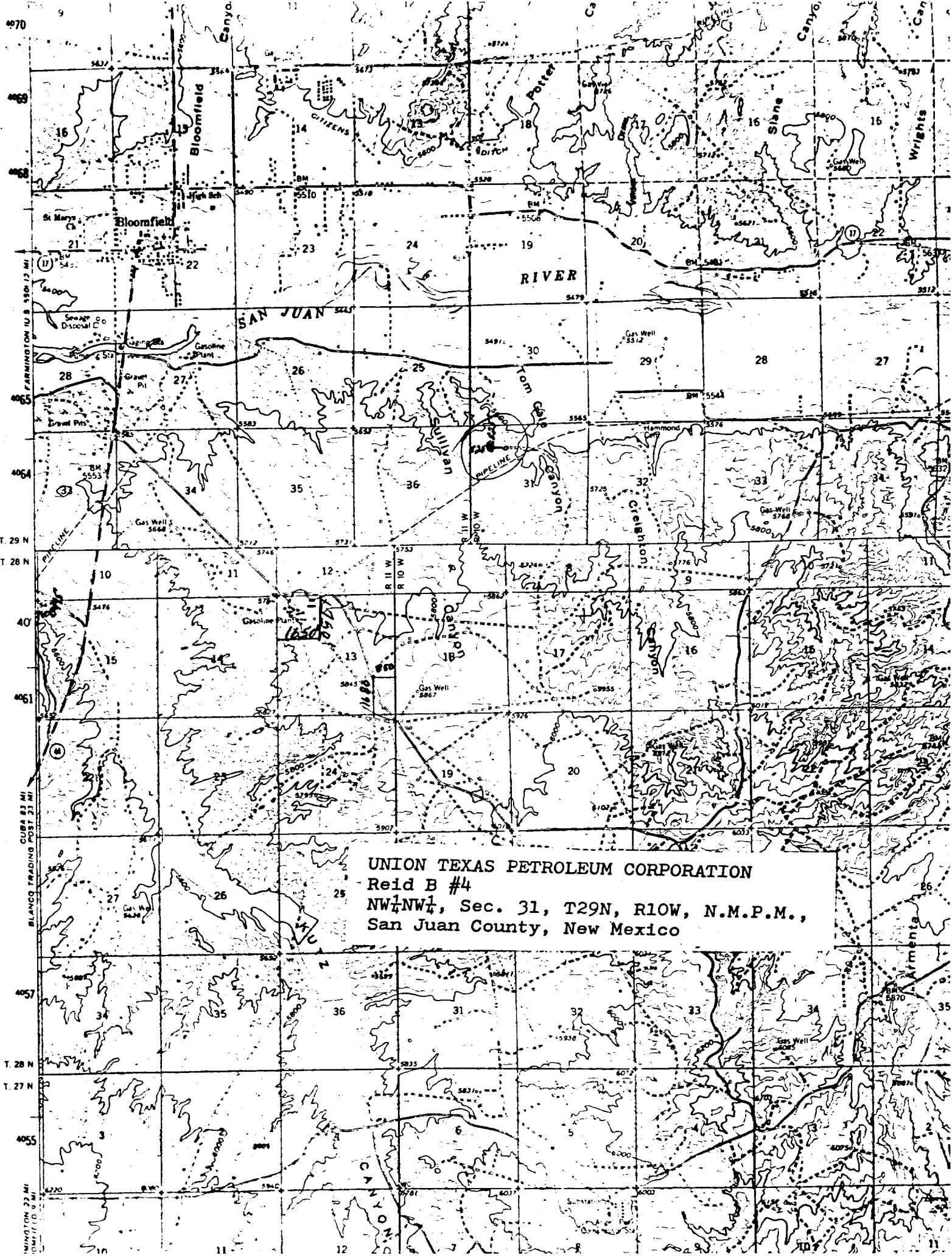
I hereby certify that the well location shown on this plat was plotted from field notes of actual surveys made by me or under my supervision, and that the same is true and correct to the best of my knowledge and belief.

*Michael D. Motto*  
Date Surveyed  
October 23, 1982

Registered Professional Engineer  
No. 5992

Michael D. Motto

Certificate No. 5992



UNION TEXAS PETROLEUM CORPORATION  
Reid B #4  
NW $\frac{1}{4}$ NW $\frac{1}{4}$ , Sec. 31, T29N, R10W, N.M.P.M.,  
San Juan County, New Mexico