

UNITED STATES
DEPARTMENT OF THE INTERIOR
GEOLOGICAL SURVEY

30-045-25627

APPLICATION FOR PERMIT TO DRILL, DEEPEN, OR PLUG BACK

1a. TYPE OF WORK

DRILL ☒DEEPEN ☐PLUG BACK ☐

b. TYPE OF WELL

OIL
WELL ☒GAS
WELL ☐

OTHER

SINGLE
ZONE ☒MULTIPLE
ZONE ☐

2. NAME OF OPERATOR

Union Texas Petroleum Corporation

3. ADDRESS OF OPERATOR

P.O. Box 808, Farmington, New Mexico 87401

4. LOCATION OF WELL (Report location clearly and in accordance with any State requirements.)

At surface
1980'/North; 660'/West line

At proposed prod. zone

Same as above

14. DISTANCE IN MILES AND DIRECTION FROM NEAREST TOWN OR POST OFFICE*

6 Miles southeast of Bloomfield, New Mexico.

15. DISTANCE FROM PROPOSED*

660 Ft.

16. NO. OF ACRES IN LEASE

2284.30

17. NO. OF ACRES ASSIGNED
TO THIS WELL

40.00

18. DISTANCE FROM PROPOSED LOCATION*
TO NEAREST WELL, DRILLING, COMPLETED,
OR APPLIED FOR, ON THIS LEASE, FT.

1197 Ft.

19. PROPOSED DEPTH

6180 Ft.

20. ROTARY OR CABLE TOOLS

Rotary

21. ELEVATIONS (Show whether DF, RT, GR, etc.)

5700' GR

DRILLING OPERATIONS AUTHORIZED ARE
SUBJECT TO COMPLIANCE WITH ATTACHED

"GENERAL REQUIREMENTS"

PROPOSED CASING AND CEMENTING PROGRAM

22. APPROX. DATE WORK WILL START*

February 10, 1983

This action is subject to Administrative
appeal pursuant to 30 CFR 290.

SIZE OF HOLE	SIZE OF CASING	WEIGHT PER FOOT	SETTING DEPTH	QUANTITY OF CEMENT
13-3/4"	9-5/8"	36.0 K-55	300'	250 Cu. Ft.
8-3/4"	7"	23 K-55	5350	1400 Cu. Ft.
6-1/4"	4-1/2"	10.5 K-55	5150 - 6180	150 Cu. Ft.

We desire to drill 13-3/4" surface hole to approx 300 ft. using natural mud as a circulating medium. Run new 9-5/8" csg. to TD. Cmt. w/approx. 250 cu. ft. of class "B" cement circulated to the surface. Pressure test the casing to approx. 800 PSIG for 10 min. Drill 8-3/4" hole to approx. 5350 ft. using a starch base, permaloid, nondispersed mud as the circulating medium. Log the well. Run new 7" csg. to TD with a DV tool at approx. 2000 ft. Cmt. 1st stage with approx. 750 cu. ft. of 65/35/6 followed by approx. 100 cu. ft. of class "B" cmt. Cement the 2nd stage w/approx. 450 cu. ft. 65/35/12 followed by approx. 100 cu. ft. of class "B". Circ. cmt. to surface. Drill out the DV tool. Pressure test the pipe to 1500 PSIG for 10 min. Drill out w/6-1/4" bit to approx. 6180' using natural gas as the circulating medium. Log the well. Run new 4-1/2" csg. to TD and cmt. w/approx. 150 cu. ft. of 50/50 Poz mix. WOC. Perf. and fracture the Gallup zone. Clean the well up. Run new 2-3/8" EUE, 4.7 lb/gal log to the Gallup zone. Run rod pump and rods. Set a pumping unit and tanks. Test the well and connect to a gathering system.

The gas from this well has previously been dedicated to a transporter.

Note: Actual cmt. volumes will be calculated from caliper log.

IN ABOVE SPACE DESCRIBE PROPOSED PROGRAM: If proposal is to deepen or plug back, give data on present production and proposed new productive zone. If proposal is to drill or deepen directionally, give pertinent data on subsurface locations and measured stratigraphic thickness of the zone to be plugged or deepened, if any.

24.

SIGNED

W.K. Cooper

TITLE Field Operations Mgr.

DATE

2/9/83

(This space for Federal or State office use)

PERMIT NO.

APPROVAL DATE

APPROVED BY

TITLE

CONDITIONS OF APPROVAL, IF ANY:

APPROVED
AS AMENDED

DATE

MAR 02 1983

JAMES F. SIMS

DISTRICT ENGINEER

NMOCC

All distances must be from the outer boundaries of the Section.

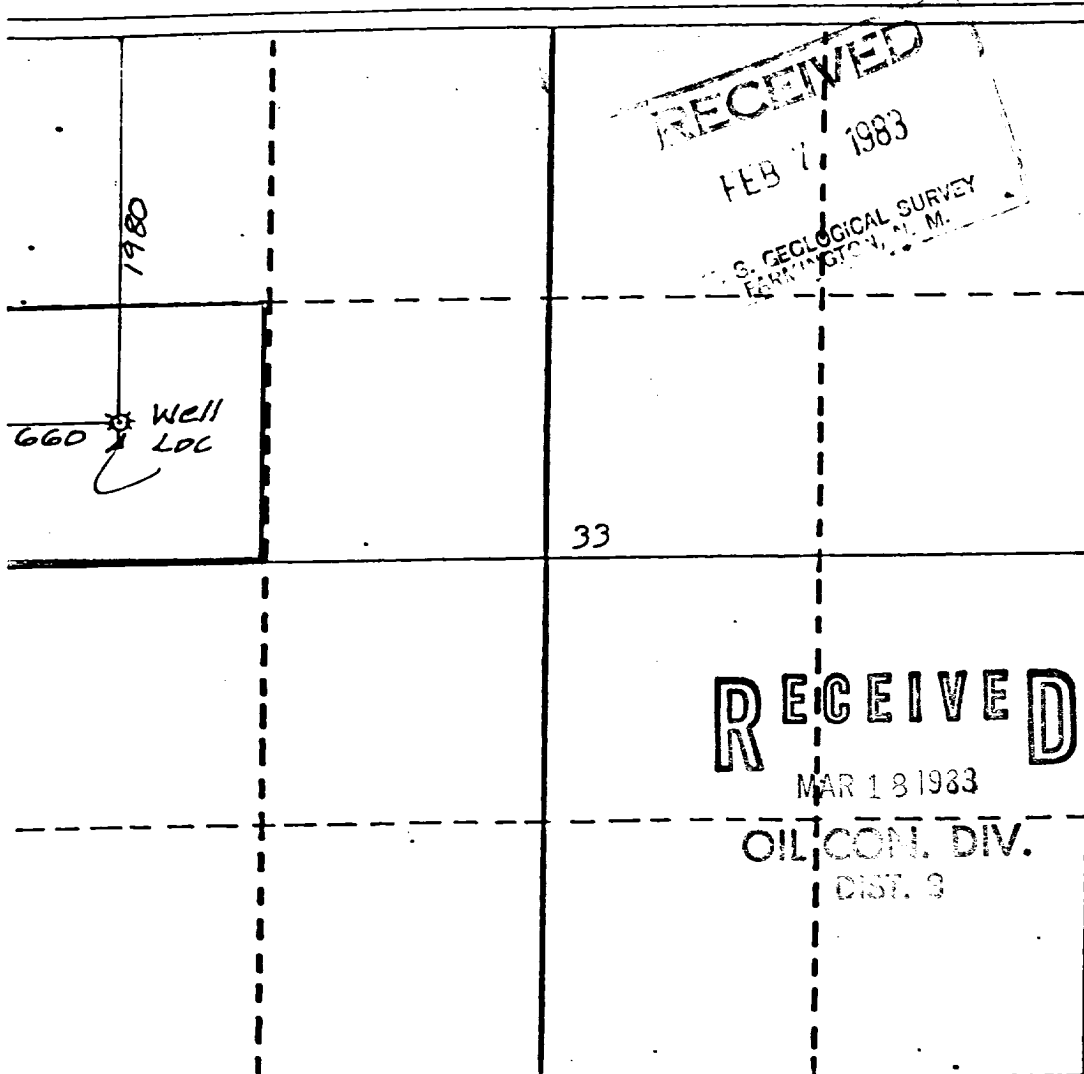
Version UNION TEXAS PETROLEUM CORPORATION		Lease ZACHRY		Well No. 43
Oil Letter E	Section 33	Township 29 NORTH	Range 10 WEST	County SAN JUAN
Civil Footage Location of Well:				
1980	feet from the	NORTH	line and	660
				feet from the
				WEST
				line
Ground Level Elev. 5700	Producing Formation Gallup		Pool Armenta/Gallup Ext.	Dedicated Acreage SW SE 40.00
				Acre

1. Outline the acreage dedicated to the subject well by colored pencil or hatchure marks on the plat below.
2. If more than one lease is dedicated to the well, outline each and identify the ownership thereof (both as to working interest and royalty).
3. If more than one lease of different ownership is dedicated to the well, have the interests of all owners been consolidated by communitization, unitization, force-pooling, etc?

☐ Yes ☒ No If answer is "yes," type of consolidation _____

If answer is "no," list the owners and tract descriptions which have actually been consolidated. (Use reverse side of this form if necessary.) _____

No allowable will be assigned to the well until all interests have been consolidated (by communitization, unitization, forced-pooling, or otherwise) or until a non-standard unit, eliminating such interests, has been approved by the Division.



CERTIFICATION

I hereby certify that the information contained herein is true and complete to the best of my knowledge and belief.

Name
Rudy D. Motto

Position
Area Field Operations Mgr.

Company
Union Texas Petroleum Corp.

Date
December 7, 1982

I hereby certify that the well location shown on this plat was plotted from field notes of actual surveys made by me or under my supervision, and that the same is true and correct to the best of my knowledge and belief.

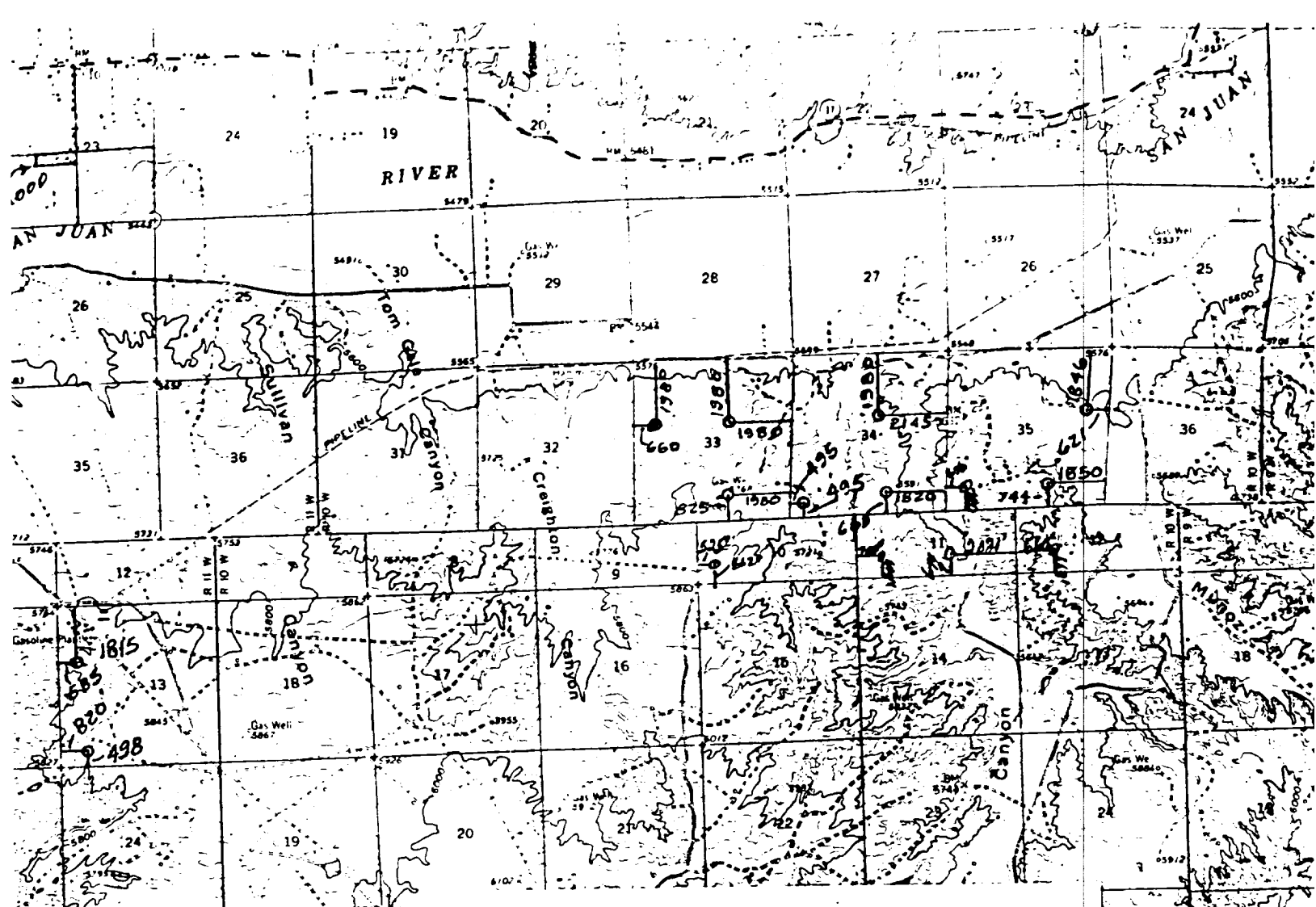
Date Surveyed
November 11, 1982

Registered Professional Engineer and/or Land Surveyor

Michael Daly

Certificate No.

5992



UNION TEXAS PETROLEUM CORPORATION
Zachry #43
SW $\frac{1}{4}$ NW $\frac{1}{4}$, Sec. 33, T29N, R10W, N.M.P.M.,
San Juan County, New Mexico

