

UNITED STATES
DEPARTMENT OF THE INTERIOR
GEOLOGICAL SURVEY

SUBMIT IN TRIPLICATE*
(Other instructions on reverse side)

Form approved.
Budget Bureau No. 42-R1425.

30-045-25628

APPLICATION FOR PERMIT TO DRILL, DEEPEN, OR PLUG BACK

1a. TYPE OF WORK DRILL DEEPEN PLUG BACK

b. TYPE OF WELL OIL WELL GAS WELL OTHER
SINGLE ZONE MULTIPLE ZONE

2. NAME OF OPERATOR
Union Texas Petroleum Corporation

3. ADDRESS OF OPERATOR
P. O. Box 808, Farmington, New Mexico 87499

4. LOCATION OF WELL (Report location clearly and in accordance with any State requirements.)
At surface 1980 feet/North; 1980 feet/East line

At proposed prod. zone Same as above

14. DISTANCE IN MILES AND DIRECTION FROM NEAREST TOWN OR POST OFFICE*
6 miles southeast of Bloomfield, New Mexico

15. DISTANCE FROM PROPOSED* LOCATION TO NEAREST PROPERTY OR LEASE LINE, FT. (Also to nearest drig. unit line, if any)
1980 feet 660 feet

18. DISTANCE FROM PROPOSED LOCATION* TO NEAREST WELL, DRILLING, COMPLETED, OR APPLIED FOR, ON THIS LEASE, FT.
1038 feet

21. ELEVATIONS (Show whether DF, RT, GR, etc.)
5675 GR

SIZE OF HOLE	SIZE OF CASING	WEIGHT PER FOOT	SETTING DEPTH
13-3/4"	9-5/8"	36.0 K-55	300
8-3/4"	7"	23 K-55	5330
6-1/4"	4-1/2"	10.5 K-55	5130-6160

16. NO. OF ACRES IN LEASE
40.00

19. PROPOSED DEPTH
6160

22. APPROX. DATE WORK WILL START*
February 15, 1983

20. ROTARY OR CABLE TOOLS
Rotary

17. NO. OF ACRES ASSIGNED TO THIS WELL
40.00

22. APPROX. DATE WORK WILL START*
February 15, 1983

20. ROTARY OR CABLE TOOLS
Rotary

17. NO. OF ACRES ASSIGNED TO THIS WELL
40.00

22. APPROX. DATE WORK WILL START*
February 15, 1983

20. ROTARY OR CABLE TOOLS
Rotary

17. NO. OF ACRES ASSIGNED TO THIS WELL
40.00

22. APPROX. DATE WORK WILL START*
February 15, 1983

20. ROTARY OR CABLE TOOLS
Rotary

17. NO. OF ACRES ASSIGNED TO THIS WELL
40.00

5. LEASE DESIGNATION AND SERIAL NO.
SF-080724-A

6. IF INDIAN, ALLOTTEE OR TRIBE NAME

7. UNIT AGREEMENT NAME

8. FARM OR LEASE NAME
Zachry

9. WELL NO.
14

10. FIELD AND POOL OR WILDCAT
Undesignated Gallup

11. SEC. T., R., M., OR BLK. AND SURVEY OR AREA
G Sec. 33, T29N, R10W
N.M.P.M.

12. COUNTY OR PARISH
San Juan

13. STATE
New Mexico

RECEIVED
FEB 7 1983
U.S. GEOLOGICAL SURVEY
FARMINGTON, N.M.

RECEIVED
FEB 20 1983
OIL CON. DIV.
DIST. 3

MAR 18 1983

We desire to drill 13-3/4" surface hole to approx. 300 ft using natural mud as circulating medium. Run new 9-5/8" csg to TD. Cement with approx. 250 cu ft of Class "B" cement circulated to the surface. Pressure test the casing to approx. 800 PSIG for 10 min. Drill 8-3/4" hole to approx. 5330 ft. using a starch base, permaloid, nondispersed mud as the circulating medium. Log the well. Run new 7" casing to TD with a DV tool at approx. 2000 ft. Cement 1st stage w/approx. 750 cu ft of 65/35/6 followed by approx. 10 cu ft. of Class "B" cement. Circ. cement to surface. Drill out the DV tool. Pressure test the pipe to 1500 PSIG for 10 min. Log the well. Run new 4-1/2" casing to TD and using natural gas as the circ. medium. Log the well. Run new 4-1/2" casing to TD and cement w/approx. 150 cu ft of 50/50 Poz mix. WOC. Perforate and fracture the Gallup zone. Clean the well up. Run new 2-3/8" EUE, 4.7#, J-55 tbg. to the Gallup zone. Run rod pumps and rods. Set a pumping unit and tanks. Test the well and connect to a gathering system (over)

IN ABOVE SPACE DESCRIBE PROPOSED PROGRAM: If proposal is to deepen or plug back, give data on present productive zone and proposed new product zone. If proposal is to drill or deepen directionally, give pertinent data on subsurface locations and measured and true vertical depths. Give blow preventer program, if any.

24. SIGNED W. K. Cooper TITLE Field Operations Manager DATE February 2,

(This space for Federal or State office use)

APPROVAL DATE _____

PERMIT NO. _____ TITLE _____

APPROVED BY _____ CONDITIONS OF APPROVAL, IF ANY: _____

APPROVED
AS AMENDED
DATE MAR 02 1983
JAMES F. SIMS
DISTRICT ENGINEER

Instructions

General: This form is designed for submitting proposals to perform certain well operations, as indicated, on all types of lands and leases for appropriate action by either a Federal or a State agency, or both, pursuant to applicable Federal and/or State laws and regulations. Any necessary special instructions concerning the use of this form and the number of copies to be submitted, particularly with regard to local, area, or regional procedures and practices, either are shown below or will be issued by, or may be obtained from, the local Federal and/or State office.

Item 1: If the proposal is to redrill to the same reservoir at a different subsurface location or to a new reservoir, use this form with appropriate notations. Consult local applicable State or Federal regulations concerning subsequent work proposals or reports on the well.

Item 4: If there are no applicable State requirements, locations on Federal or Indian land should be described in accordance with Federal requirements. Consult local State or Federal office for specific instructions.

Item 14: Needed only when location of well cannot readily be found by road from the land or lease description. A plat, or plats, separate or on this reverse side, showing the roads to, and the surveyed location of, the well, and any other required information, should be furnished when required by Federal or State agency offices.

Items 15 and 18: If well is to be, or has been directionally drilled, give distances for subsurface location of hole in any present or objective production zone.

Item 22: Consult applicable Federal or State regulations, or appropriate officials, concerning approval of the proposal before operations are started.

★ U.S. GOVERNMENT PRINTING OFFICE : 1963-O-711-396

UNITED STATES DEPARTMENT OF THE INTERIOR
BUREAU OF LAND MANAGEMENT

The gas from this well has previously been dedicated to a transporter.

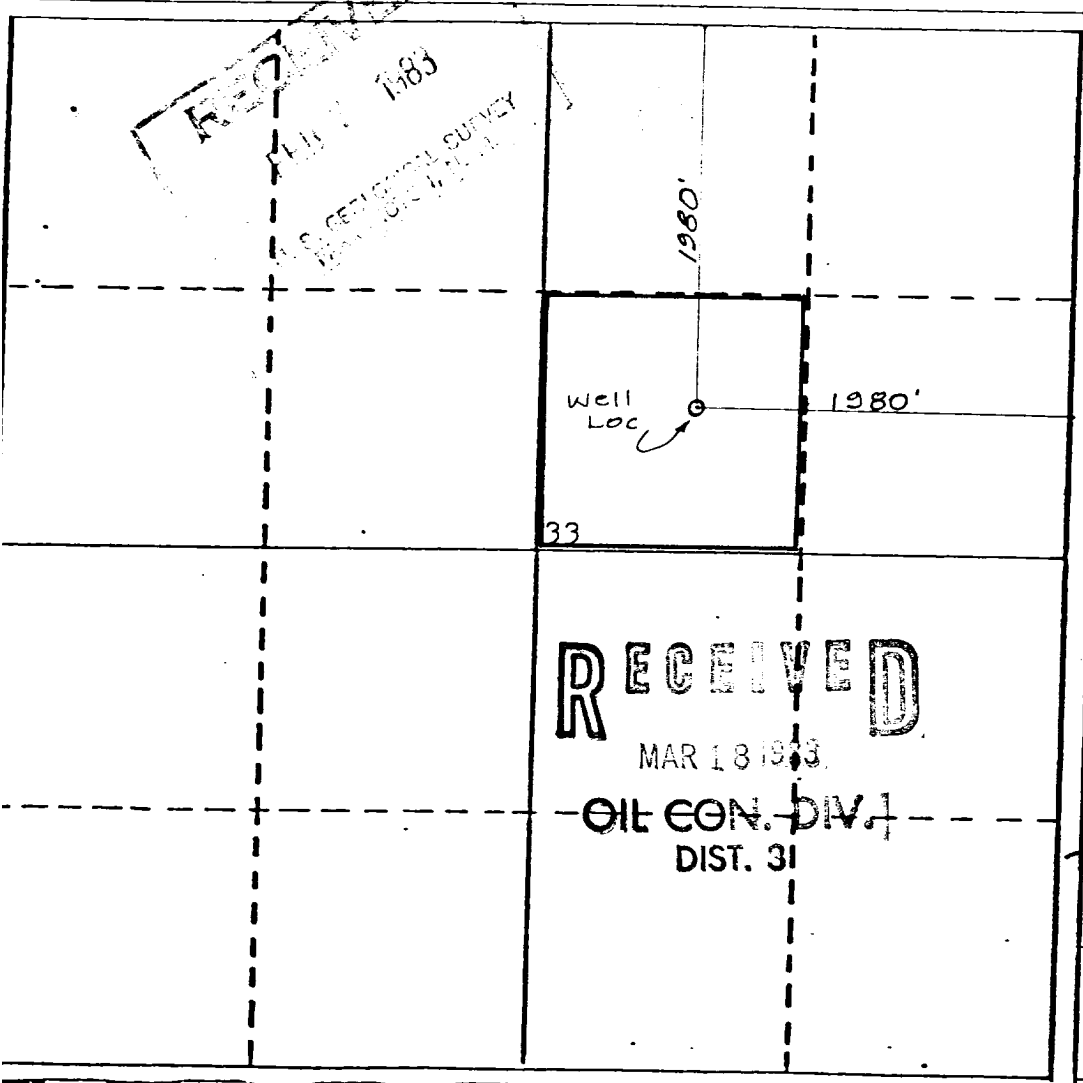
NOTE: Actual cement volumes will be calculated from caliper log.

All distances must be from the outer boundaries of the Section.

Operator UNION TEXAS PETROLEUM CORPORATION			Lease ZACHRY		Well No. 44
Unit Letter G	Section 33	Township 29 NORTH	Range 10 WEST	County SAN JUAN	
Actual Footage Location of Well: 1980 feet from the NORTH line and 1980 feet from the EAST line					
Ground Level Elev. 5675	Producing Formation Gallup		Pool Wildcat Armenta	Dedicated Acreage: SW NE 40.00 Acres	

1. Outline the acreage dedicated to the subject well by colored pencil or hachure marks on the plat below.
2. If more than one lease is dedicated to the well, outline each and identify the ownership thereof (both as to working interest and royalty).
3. If more than one lease of different ownership is dedicated to the well, have the interests of all owners been consolidated by communitization, unitization, force-pooling, etc?
 Yes No If answer is "yes," type of consolidation _____

If answer is "no," list the owners and tract descriptions which have actually been consolidated. (Use reverse side of this form if necessary.) _____
No allowable will be assigned to the well until all interests have been consolidated (by communitization, unitization, forced-pooling, or otherwise) or until a non-standard unit, eliminating such interests, has been approved by the Division.



CERTIFICATION

I hereby certify that the information contained herein is true and complete to the best of my knowledge and belief.

Rudy D. Motto
Name
Rudy D. Motto

Position
Field Operations Manager

Company
Union Texas Petroleum

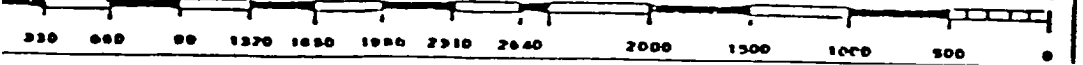
Date
11-22-82

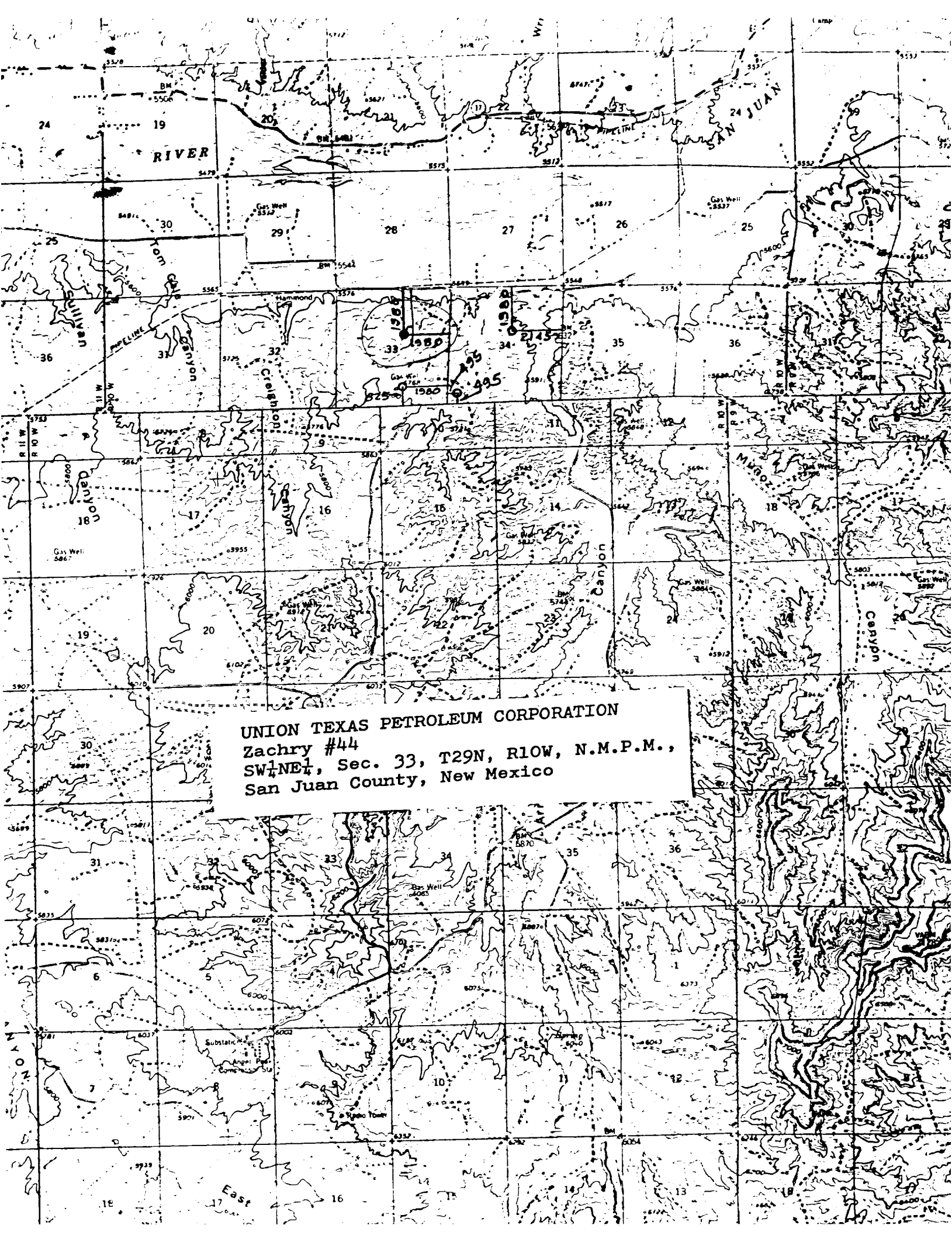
I hereby certify that the well location shown on this plat was plotted from field notes of actual surveys made by me or under my supervision, and that the same is true and correct to the best of my knowledge and belief.

Michael Daly
Date Surveyed
November 5, 1982

Registered Professional Engineer and/or Land Surveyor

Michael Daly
Certificate No.
5992





UNION TEXAS PETROLEUM CORPORATION
Zachry #44
SW $\frac{1}{4}$ NE $\frac{1}{4}$, Sec. 33, T29N, R10W, N.M.P.M.,
San Juan County, New Mexico