

UNITED STATES  
DEPARTMENT OF THE INTERIOR  
GEOLOGICAL SURVEYRECEIVED  
APR 21 1983Form approved.  
Budget Bureau No. 42-R1425.

30045-25673

## APPLICATION FOR PERMIT TO DRILL, DEEPEN, OR PLUG BACK

## 1a. TYPE OF WORK

DRILL ☒DEEPEN ☐PLUG BACK ☐

## b. TYPE OF WELL

OIL  
WELL ☒GAS  
WELL ☐OTHER ☐SINGLE  
ZONE ☒MULTIPLE  
ZONE ☐

## 2. NAME OF OPERATOR

Union Texas Petroleum Corporation

## 3. ADDRESS OF OPERATOR

P. O. Box 808, Farmington, New Mexico 87499

## 4. LOCATION OF WELL (Report location clearly and in accordance with any State requirements.)

At surface

2127 ft./South line and 1931 ft./West line

At proposed prod. zone

Same as above

## 14. DISTANCE IN MILES AND DIRECTION FROM NEAREST TOWN OR POST OFFICE\*

1 mile Southeast of Bloomfield, New Mexico

## 15. DISTANCE FROM PROPOSED\*

LOCATION TO NEAREST

PROPERTY OR LEASE LINE, FT.

513 ft.

(Also to nearest drlg. unit line, if any) 493 ft.

## 18. DISTANCE FROM PROPOSED LOCATION\*

TO NEAREST WELL, DRILLING, COMPLETED,

OR APPLIED FOR, ON THIS LEASE, FT.

760 ft.

## 16. NO. OF ACRES IN LEASE

1183.91

## 19. PROPOSED DEPTH

5910'

17. NO. OF ACRES ASSIGNED  
TO THIS WELL

40.00

## 20. ROTARY OR CABLE TOOLS

Rotary

## 21. ELEVATIONS (Show whether DF, RT, GR, etc.)

5517 GR

## DRILLING OPERATIONS AUTHORIZED ARE

SUBJECT TO COMPLIANCE WITH ATTACHED

"GENERAL REQUIREMENTS AND CEMENTING PROGRAM"

## 22. APPROX. DATE WORK WILL START\*

May 21, 1983

## 23.

This action is subject to administrative  
appeal pursuant to 30 CFR 250.

SIZE OF HOLE	SIZE OF CASING	WEIGHT PER FOOT	SETTING DEPTH	QUANTITY OF CEMENT
13-3/4"	9-5/8"	36.0# K-55	300'	250 cu. ft. (circulated)
8-3/4"	7"	23.0# K-55	5200'	1400 cu. ft. (circulated)
6-1/4"	4-1/2"	10.5# K-55	5000 - 5910'	150 cu. ft. (top of liner)

We desire to drill 13-3/4" surface hole to approx. 300 ft. using natural mud as a circulating medium. Run new 9-5/8" casing to TD. Cement with approx. 250 cu. ft. of Class "B" cement circulated to the surface. Pressure test the casing to approx. 800 PSIG for 10 minutes. Drill 8-3/4" hole to approx. 5200 feet using a starch base, permaloid, nondispersed mud as the circulating medium. Log the well. Run new 7" casing to TD with a DV tool at approx. 2000 feet. Cement 1st stage with approx. 750 cu. ft. of 65/35/6 followed by approx. 100 cu. ft. of Class "B" cement. Cement the second stage with approx. 450 cu. ft. of 65/35/12 followed by approx. 100 cu. ft. of Class "B". Circulate cement to surface. Drill out the DV tool. Pressure test the pipe to 1500 PSIG for 10 minutes. Drill out with 6-1/4" bit to approx. 5910 feet using natural gas as the circulating medium. Log the well. Run new 4-1/2" casing to TD and cement with approx. 150 cu. ft. of 50/50 Poz mix. W.O.C. Perforate and fracture the Gallup zone. Clean the well up. Run new 2-3/8" EUE, 4.7#, J-55 tubing to the Gallup zone. Run rod pump and rods. Set a pumping unit and tanks. Install a pipeline from the wellhead to the existing Rudy Gathering System and test the well. The pipeline to be built to the attached drawings and to the code of Federal Regulations Title 49, Part 192. (over)

IN ABOVE SPACE DESCRIBE PROPOSED PROGRAM: If proposal is to deepen or plug back, give data on present productive zone and proposed new productive zone. If proposal is to drill or deepen directionally, give pertinent data on subsurface locations and measured and true vertical depths. Give blowout preventer program, if any.

## 24.

SIGNED

W. K. Cooper

TITLE Field Operations Manager

DATE March 21, 1983

(This space for Federal or State office use)

PERMIT NO.

APPROVAL DATE

APPROVED BY

TITLE

CONDITIONS OF APPROVAL, IF ANY:

APPROVED  
AS AMENDED

APR 15 1983

JAMES F. SIMS  
DISTRICT ENGINEER

## Instructions

**General:** This form is designed for submitting proposals to perform certain well operations, as indicated, on all types of lands and leases for appropriate action by either a Federal or a State agency, or both, pursuant to applicable Federal and/or State laws and regulations. Any necessary special instructions concerning the use of this form and the number of copies to be submitted, particularly with regard to local, area, or regional procedures and practices, either are shown below or will be issued by, or may be obtained from, the local Federal and/or State office.

**Item 1:** If the proposal is to redrill to the same reservoir at a different subsurface location or to a new reservoir, use this form with appropriate notations. Consult applicable State or Federal regulations concerning subsequent work proposals or reports on the well.

**Item 4:** If there are no applicable State requirements, locations on Federal or Indian land should be described in accordance with Federal requirements. Consult local State or Federal office for specific instructions.

**Item 14:** Needed only when location of well cannot readily be found by road from the land or lease description. A plat, or plats, separate or on this reverse side, showing the roads to, and the surveyed location of, the well, and any other required information, should be furnished when required by Federal or State agency offices.

**Items 15 and 18:** If well is to be, or has been directionally drilled, give distances for subsurface location of hole in any present or objective production zone.

**Item 22:** Consult applicable Federal or State regulations, or appropriate officials, concerning approval of the proposal before operations are started.

☆ U.S. GOVERNMENT PRINTING OFFICE : 1963-O-711-396

*The underground pipe system will be completely coated and cathodically protected.*

*The gas from this well has previously been dedicated to a transporter.*

**NOTE:** Actual cement volumes to be calculated from caliper log.

All distances must be from the outer boundaries of the Section.

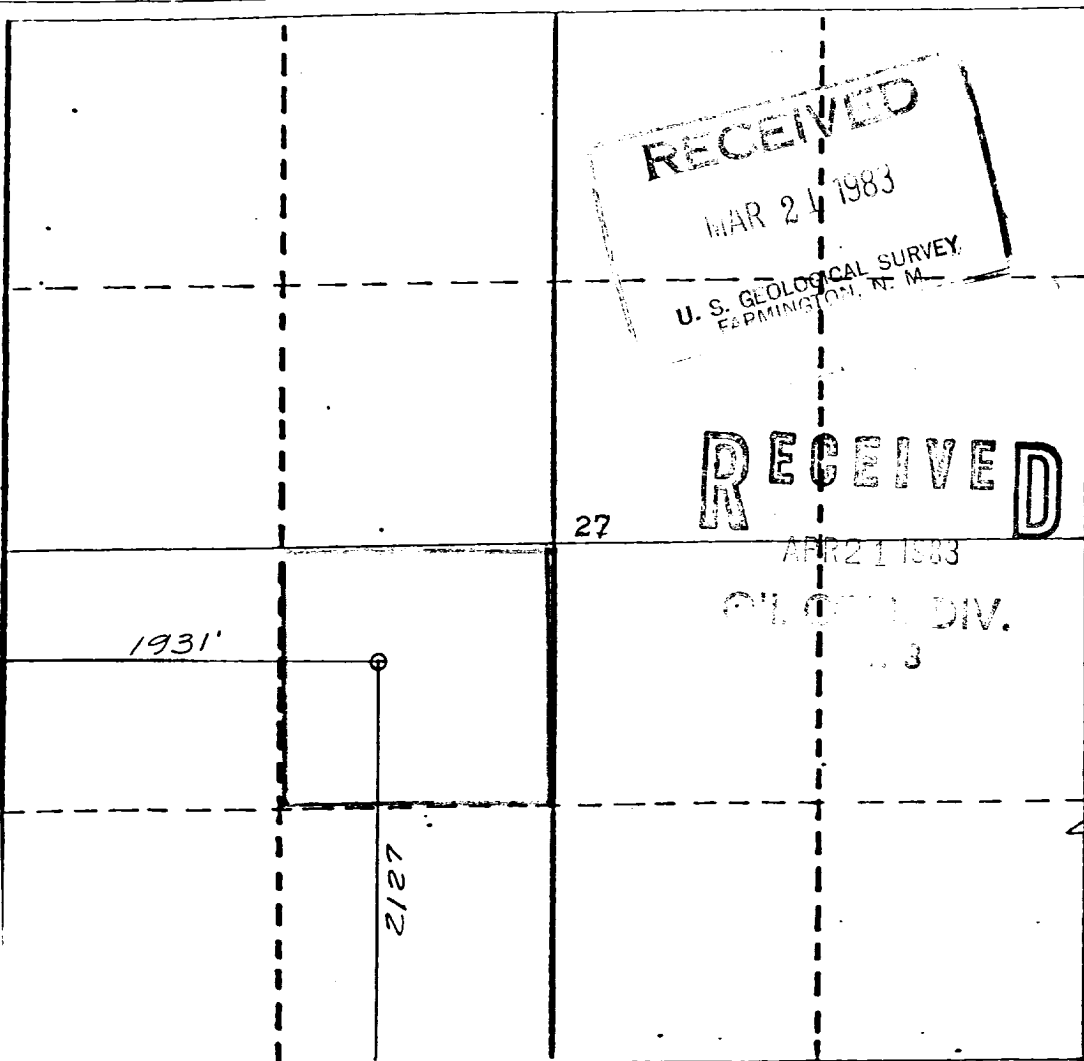
Operator <b>UNION TEXAS PETROLEUM CORPORATION</b>			Lease <b>CONGRESS</b>		Well No. <b>18</b>
Unit Letter <b>K</b>	Section <b>27</b>	Township <b>29 NORTH</b>	Range <b>11 WEST</b>	County <b>SAN JUAN</b>	
Actual Footage Location of Well:					
<b>2127</b> feet from the <b>SOUTH</b>		line and <b>1931</b>		feet from the <b>WEST</b> line	
Ground Level Elev. <b>5517</b>	Producing Formation <b>Chlorop</b>	Pool <b>Chlorop</b>		Dedicated Acreage <b>1.00</b> Acres	

1. Outline the acreage dedicated to the subject well by colored pencil or hachure marks on the plat below.
2. If more than one lease is dedicated to the well, outline each and identify the ownership thereof (both as to working interest and royalty).
3. If more than one lease of different ownership is dedicated to the well, have the interests of all owners been consolidated by communitization, unitization, force-pooling, etc?

☐ Yes ☐ No If answer is "yes," type of consolidation \_\_\_\_\_

If answer is "no," list the owners and tract descriptions which have actually been consolidated. (Use reverse side of this form if necessary.) \_\_\_\_\_

No allowable will be assigned to the well until all interests have been consolidated (by communitization, unitization, forced-pooling, or otherwise) or until a non-standard unit, eliminating such interests, has been approved by the Division.



CERTIFICATION

I hereby certify that the information contained herein is true and complete to the best of my knowledge and belief.

*Ruby D. Matt*  
Name  
**Ruby D. Matt**

Position  
**Area Operations Manager**

Company  
**Union Texas Petroleum Corp.**

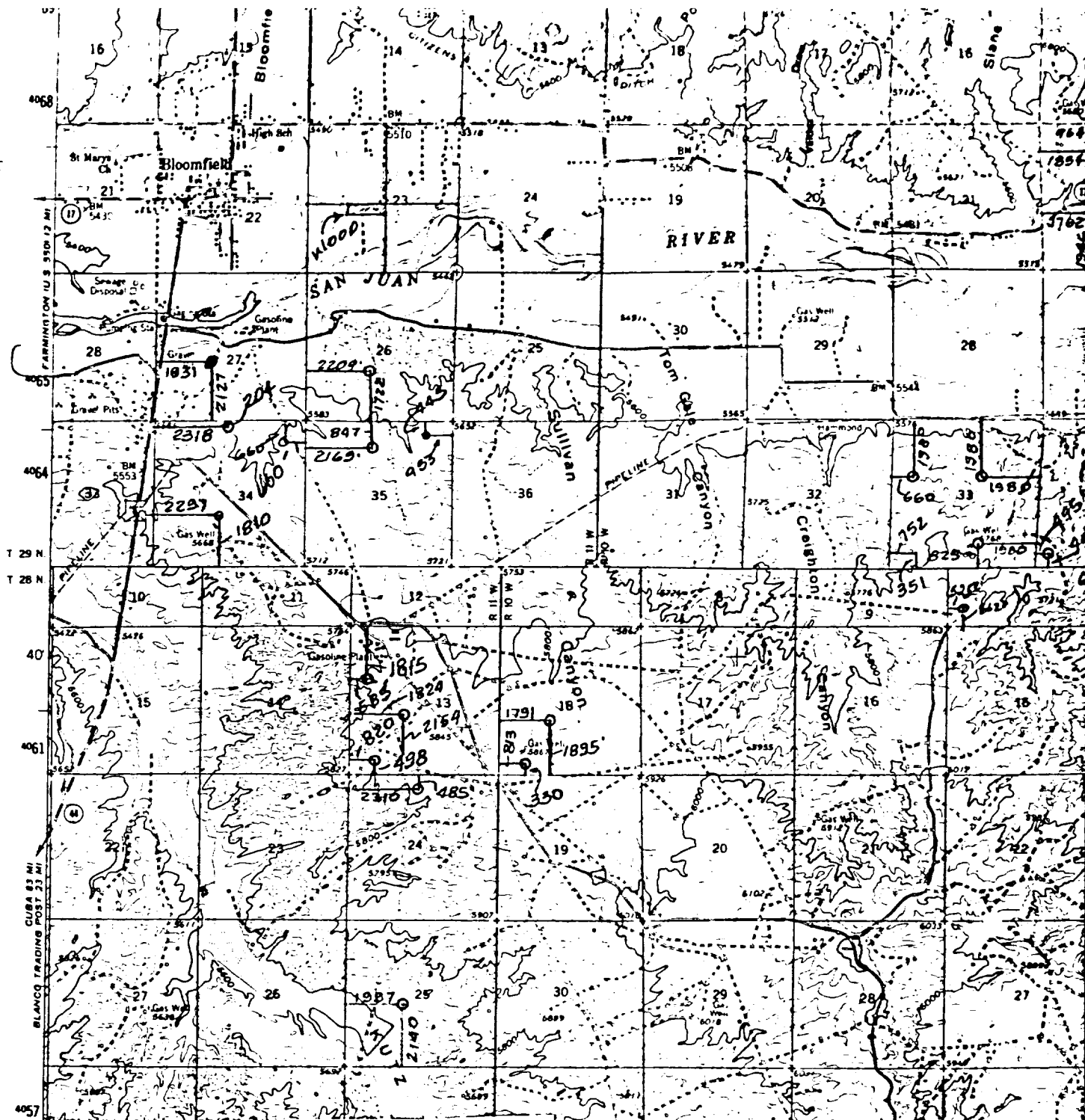
Date  
**February 7, 1983**

I hereby certify that the well location shown on this plat was plotted from field notes or other reliable data made by me or under my supervision, and that the same is true and correct to the best of my knowledge and belief.

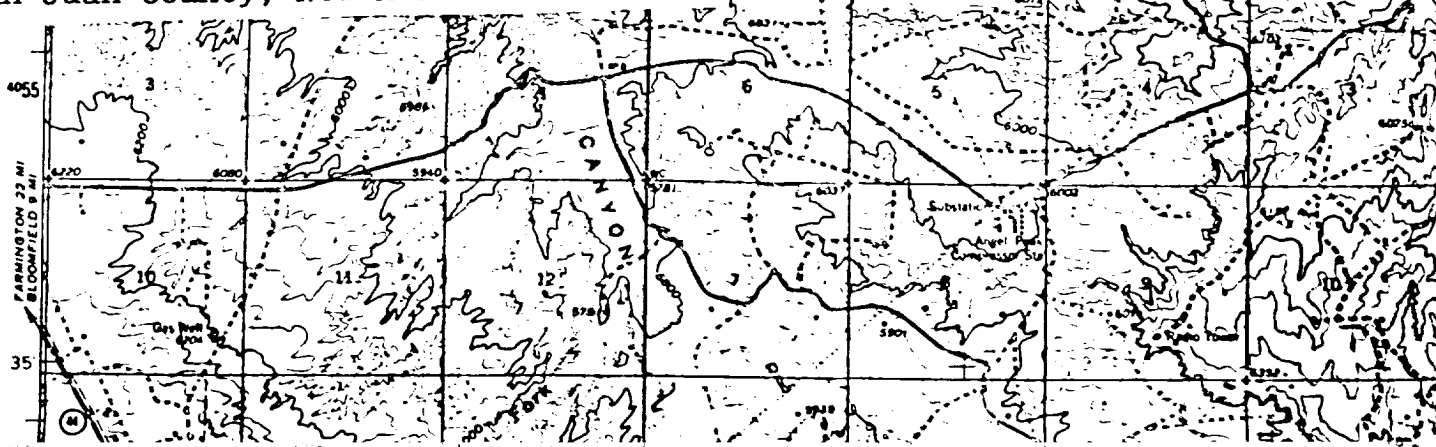
Date Surveyed  
**January 14, 1983**  
Registered Professional Engineer and/or Land Surveyor

**Michael Daly**

Certificate No.  
**5992**



UNION TEXAS PETROLEUM CORPORATION  
Congress #18  
NE $\frac{1}{4}$ SW $\frac{1}{4}$ , Sec. 27, T29N, R11W, N.M.P.M.,  
San Juan County, New Mexico



UNION TEXAS PETROLEUM CORPORATION

CONGRESS NO. 18

1. The geologic name of the surface formation is "Wasatch".

2. The estimated tops of important geologic markers are:

A. Top of the Ojo Alamo	344 ft.
B. Kirtland	575 ft.
C. Fruitland	1340 ft.
D. Pictured Cliffs	1670 ft.
E. Chacra	2669 ft.
F. Cliff House	3249 ft.
G. Point Lookout	3995 ft.
H. Gallup	5261 ft.

3. The estimated depths at which anticipated water, oil or other mineral bearing formations are expected to be encountered are:

A. Top of the Ojo Alamo	344 ft.	Water
B. Kirtland	575 ft.	Water
C. Fruitland	1340 ft.	Water
D. Pictured Cliffs	1670 ft.	Gas
E. Chacra	2669 ft.	Gas
F. Cliff House	3249 ft.	Water
G. Point Lookout	3995 ft.	Gas
H. Gallup	5261 ft.	Oil & Gas

4. The casing program is shown on form 9-331C and all casing is new.

5. The lessee's pressure control equipment schematics are attached, along with minimum specifications, testing procedures, and frequencies.

6. The type, estimated volumes, and characteristics of the circulating medium are as follows:

A. 0 - 300 +	ft.	Natural Mud
B. 300 +	- 5200 +	ft. Permaloid non-dispersed mud containing approx. 150 sx. gel, 60 sx. of permaloid and 15 sx. of CMC.
C. 5200 +	- 5910 +	ft. Natural Gas

7. The auxiliary equipment to be used will be floats at the bit and a sub on the floor with a full opening valve to be stabbed into the drill pipe when the kelly is not in the string

8. The well is in an area which is partially developed; therefore, we will not have a testing and coring program. The logging program is as follows:

- A. G.R. - DIFL
- B. GR - CAL
- C. F.D.C.- C.N.L.
- D. SNL
- E. Temperature

9. We do not expect to find any abnormal pressures, temperatures or hydrogen sulfide problems in this partially developed area.

10. The anticipated starting date for this well is: May 21, 1983