

UNITED STATES
DEPARTMENT OF THE INTERIOR
GEOLOGICAL SURVEYSUBMIT IN TRIPlicate
(Other instructions on
reverse side)Form approved.
Budget Bureau No. 42-R1425.30-045-25702
D. LEASE DESIGNATION AND SERIAL NO.

SF 077865

6. IF INDIAN, ALLOTTEE OR TRIBE NAME

7. UNIT AGREEMENT NAME

8. FARM OR LEASE NAME

Albright

9. WELL NO.

11

10. FIELD AND POOL, OR WILDCAT

Undesignated Gallup

11. SEC., T., R., M., OR BLK.
AND SURVEY OR AREASec. 22, T-29N, R-10W
N.M.P.M.

12. COUNTY OR PARISH

San Juan

13. STATE
New Mexico

1a. TYPE OF WORK

DRILL ☒DEEPEN ☐PLUG BACK ☐

b. TYPE OF WELL

OIL
WELL ☒GAS
WELL ☐

OTHER

SINGLE
ZONE ☒MULTIPLE
ZONE ☐

2. NAME OF OPERATOR

Union Texas Petroleum Corporation

3. ADDRESS OF OPERATOR

P. O. Box 808, Farmington, New Mexico 87499

4. LOCATION OF WELL (Report location clearly and in accordance with any State requirements.)

At surface

1862 ft./South line and 860 ft./East line

At proposed prod. zone

Same as above

14. DISTANCE IN MILES AND DIRECTION FROM NEAREST TOWN OR POST OFFICE*

6 miles East of Bloomfield, New Mexico

15. DISTANCE FROM PROPOSED*

542 ft.

LOCATION TO NEAREST

PROPERTY OR LEASE LINE, FT.

(Also to nearest drlg. unit line, if any)

460 ft.

16. NO. OF ACRES IN LEASE

598.60

17. NO. OF ACRES ASSIGNED
TO THIS WELL

40.00

18. DISTANCE FROM PROPOSED LOCATION*
TO NEAREST WELL, DRILLING, COMPLETED,
OR APPLIED FOR, ON THIS LEASE, FT.

1074 ft.

19. PROPOSED DEPTH

6121'

20. ROTARY OR CABLE TOOLS

Rotary

21. ELEVATIONS (Show whether DF, RT, GR, etc.) DRILLING OPERATIONS AUTHORIZED ARE
SUBJECT TO COMPLIANCE WITH ATTACHED

5614' GR

22. APPROX. DATE WORK WILL START*

April 28, 1983

23. "GENERAL REQUIREMENTS"
PROPOSED CASING AND CEMENTING PROGRAM This action is subject to administrative
appeal pursuant to 30 CFR 291.

| SIZE OF HOLE | SIZE OF CASING | WEIGHT PER FOOT | SETTING DEPTH | QUANTITY OF CEMENT |
|--------------|----------------|-----------------|---------------|----------------------------|
| 13-3/4" | 9-5/8" | 36.0# K-55 | 300' | 250 cu. ft. (circulated) |
| 8-3/4" | 7" | 26.0# K-55 | 5400' | 1400 cu. ft. (circulated) |
| 6-1/4" | 4-1/2" | 11.6# K-55 | 5200 - 6121' | 150 cu. ft. (top of liner) |

We desire to drill 13-3/4" surface hole to approx. 300 ft. using natural mud as a circulating medium. Run new 9-5/8" casing to TD. Cement with approx. 250 cu. ft. of Class "B" cement circulated to the surface. Pressure test the casing to approx. 800 PSIG for 10 minutes. Drill 8-3/4" hole to approx. 5400 ft. using a starch base, permaloid, nondispersed mud as the circulating medium. Log the well. Run new 7" casing to TD with a DV tool at approx. 2000 ft. Cement 1st stage with approx. 750 cu. ft. of 65/35/6 followed by approx. 100 cu. ft. of Class "B" cement. Cement the second stage with approx. 450 cu. ft. of 65/35/12 followed by approx. 100 cu. ft. of Class "B". Circulate cement to surface. Drill out the DV tool. Pressure test the pipe to 1500 PSIG for 10 minutes. Drill out with 6-1/4" bit to approx. 6121' using natural gas as the circulating medium. Log the well. Run new 4-1/2" casing to TD and cement with approx. 150 cu. ft. of 50/50 Poz mix. W.O.C. Perforate and fracture the Gallup zone. Clean the well up. Run new 2-3/8" EUE, 4.7#, J-55 tubing to the Gallup zone. Run rod pump and rods. Set a pumping unit and tanks. Test the well and connect to a gathering system. The gas from this well has previously been dedicated to a transporter.

NOTE: Actual cement volumes will be calculated from caliper log.

IN ABOVE SPACE DESCRIBE PROPOSED PROGRAM: If proposal is to deepen or plug back, give data on present productive zone and proposed new productive zone. If proposal is to drill or deepen directionally, give pertinent data on subsurface locations and measured and true vertical depths. Give blowout preventer program, if any.

24.

SIGNED

W. K. Cooper

TITLE

Field Operations Manager

DATE March 23, 1983

(This space for Federal or State office use)

PERMIT NO.

APPROVAL DATE

APPROVED BY

TITLE

CONDITIONS OF APPROVAL, IF ANY:

APPROVED
AS AMENDED
JAMES F. SIMS
MAY 13 1983
DISTRICT ENGINEER

NMOCC

All distances must be from the outer boundaries of the Section.

| | | | | | |
|--|--------------------------------------|-----------------------------|-----------------------------|---------------------------|---|
| Lessor UNION TEXAS PETROLEUM CORPORATION | | | Lease ALBRIGHT | | Well No. 11 |
| Letter I | Section 22 | Township 29 NORTH | Range 10 WEST | County SAN JUAN | |
| Well Footage Location of Well: | | | | | |
| 1862 feet from the SOUTH | | line and 860 | | feet from the EAST | |
| Well Level Elev. 5614 | Producing Formation Gallup | | Pool Undesignated | | Dedicated Acreage NE SE 40.00 Acres |

Outline the acreage dedicated to the subject well by colored pencil or hatchure marks on the plat below.

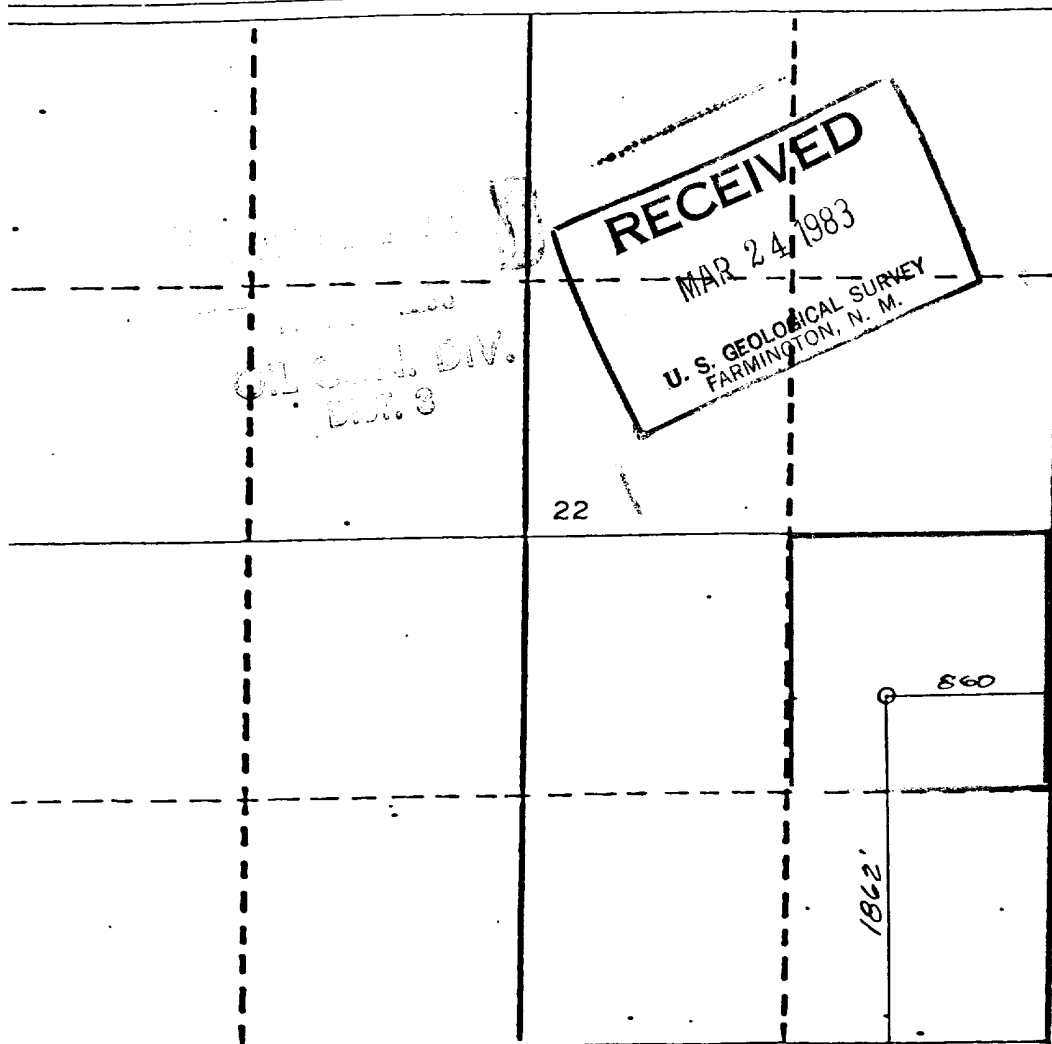
2. If more than one lease is dedicated to the well, outline each and identify the ownership thereof (both as to working interest and royalty).

If more than one lease of different ownership is dedicated to the well, have the interests of all owners been consolidated by communitization, unitization, force-pooling, etc?

☒ Yes ☒ No If answer is "yes," type of consolidation _____

If answer is "no," list the owners and tract descriptions which have actually been consolidated. (Use reverse side of this form if necessary.) _____

No allowable will be assigned to the well until all interests have been consolidated (by communitization, unitization, forced-pooling, or otherwise) or until a non-standard unit, eliminating such interests, has been approved by the Division.



CERTIFICATION

I hereby certify that the information contained herein is true and complete to the best of my knowledge and belief.

Rudy D. Motto
Name

Rudy D. Motto

Position

Area Operations Manager

Company

Union Texas Petroleum Corp.

Date

January 20, 1983

I hereby certify that the well location shown on this plat was plotted from field notes of **Michael Daly** as made by me or under my supervision and that the same is true to the best of my knowledge and belief.

Date Surveyed

December 29, 1982

Registered Professional Engineer
and/or Land Surveyor

Michael Daly

Certificate No.

5992

UNION TEXAS PETROLEUM CORPORATION

Albright #11

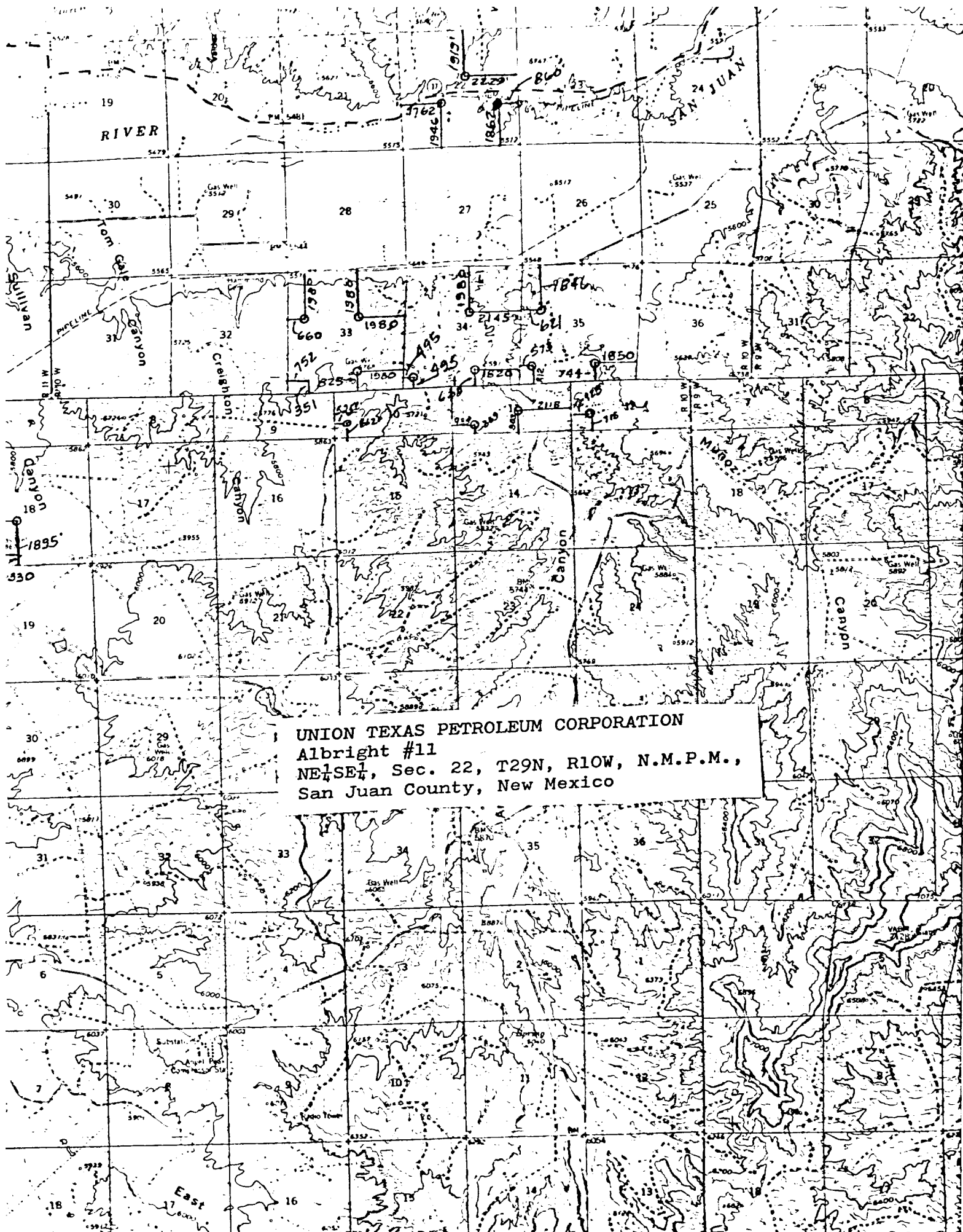
1. The geologic name of the surface formation is "Wasatch".
2. The estimated tops of important geologic markers are:

| | |
|-------------------------|----------|
| A. Top of the Ojo Alamo | 722 ft. |
| B. Kirtland | 947 ft. |
| C. Fruitland | 1631 ft. |
| D. Pictured Cliffs | 1966 ft. |
| E. Chacra | 2951 ft. |
| F. Cliff House | 3616 ft. |
| G. Point Lookout | 4276 ft. |
| H. Gallup | 5471 ft. |
3. The estimated depths at which anticipated water, oil or other mineral bearing formations are expected to be encountered are:

| | | |
|-------------------------|----------|-----------|
| A. Top of the Ojo Alamo | 722 ft. | Water |
| B. Kirtland | 947 ft. | Water |
| C. Fruitland | 1631 ft. | Water |
| D. Pictured Cliffs | 1966 ft. | Gas |
| E. Chacra | 2951 ft. | Gas |
| F. Cliff House | 3616 ft. | Water |
| G. Point Lookout | 4276 ft. | Gas |
| H. Gallup | 5471 ft. | Oil & Gas |
4. The casing program is shown on form 9-331C and all casing is new.
5. The lessee's pressure control equipment schematics are attached, along with minimum specifications, testing procedures, and frequencies.
6. The type, estimated volumes, and characteristics of the circulating medium are as follows:

| | |
|------------------------|--|
| A. 0 - 300 + ft. | Natural Mud |
| B. 300 + - 5400 + ft. | Permaloid non-dispersed mud containing approx. 150 sx. gel, 60 sx. of permaloid and 15 sx. of CMC. |
| C. 5400 + - 6121 + Ft. | Natural Gas |
7. The auxiliary equipment to be used will be floats at the bit and a sub on the floor with a full opening valve to be stabbed into the drill pipe when the kelly is not in the string.
8. The well is in an area which is partially developed; therefore, we will not have a testing and coring program. The logging program is as follows:

| |
|-------------------|
| A. G.R. - DIFL |
| B. GR - CAL |
| C. F.D.C.- C.N.L. |
| D. SNL |
| E. Temperature |
9. We do not expect to find any abnormal pressures, temperatures or hydrogen sulfide problems in this partially developed area.
10. The anticipated starting date for this well is: April 28, 1983



UNION TEXAS PETROLEUM CORPORATION
Albright #11
NE 1/4 SE 1/4, Sec. 22, T29N, R10W, N.M.P.M.,
San Juan County, New Mexico