

UNITED STATES  
DEPARTMENT OF THE INTERIOR  
GEOLOGICAL SURVEY

RECEIVED  
SUBMIT IN DRILL LOG  
(Other instructions on reverse side)

MAY 11 1983

Form approved.  
Budget Bureau No. 42-R1425.  
30 045-25704

APPLICATION FOR PERMIT TO DRILL, DEEPEN, OR PLUG BACK DIV.

1a. TYPE OF WORK  
DRILL ☒ DEEPEN ☐ PLUG BACK ☐

b. TYPE OF WELL  
OIL WELL ☒ GAS WELL ☐ OTHER ☐ SINGLE ZONE ☒ MULTIPLE ZONE ☐

2. NAME OF OPERATOR  
Union Texas Petroleum Corporation

3. ADDRESS OF OPERATOR  
P. O. Box 808, Farmington, New Mexico 87499

4. LOCATION OF WELL (Report location clearly and in accordance with any State requirements.)  
At surface 374 ft./North line and 2271 ft./East line  
At proposed prod. zone Same as above

14. DISTANCE IN MILES AND DIRECTION FROM NEAREST TOWN OR POST OFFICE\*  
3 miles Southeast of Bloomfield, New Mexico

15. DISTANCE FROM PROPOSED\* LOCATION TO NEAREST PROPERTY OR LEASE LINE, FT. (Also to nearest drlg. unit line, if any)  
374 ft. 374 ft.

16. NO. OF ACRES IN LEASE  
40.00

17. NO. OF ACRES ASSIGNED TO THIS WELL  
40.00

18. DISTANCE FROM PROPOSED LOCATION\* TO NEAREST WELL, DRILLING, COMPLETED, OR APPLIED FOR, ON THIS LEASE, FT.  
3643 ft.

19. PROPOSED DEPTH  
5999'

20. ROTARY OR CABLE TOOLS  
Rotary

21. ELEVATIONS (Show whether DF, RT, GR, etc.)  
5617' GR

22. APPROX. DATE WORK WILL START\*  
May 21, 1983

23. PROPOSED CEMENTING PROGRAM

5. LEASE DESIGNATION AND SERIAL NO.  
N.M. 03369

6. IF INDIAN, ALLOTTEE OR TRIBE NAME

7. UNIT AGREEMENT NAME

8. FARM OR LEASE NAME  
Wilson

9. WELL NO.  
3

10. FIELD AND POOL, OR WILDCAT  
Undesignated Gallup

11. SEC., T., R., M., OR BLK. AND SURVEY OR AREA  
Sec. 31, T-29N, R-10W, N.M.P.M.

12. COUNTY OR PARISH  
San Juan

13. STATE  
New Mexico

SIZE OF HOLE	SIZE OF CASING	WEIGHT PER FOOT	SETTING DEPTH	QUANTITY OF CEMENT
13-3/4"	9-5/8"	36.0# K-55	300'	250 cu. ft. (circulated)
8-3/4"	7"	23.0# K-55	5400'	1400 cu. ft. (circulated)
6-1/4"	4-1/2"	10.5# K-55	5200 - 5999'	150 cu. ft. (top of liner)

We desire to drill 13-3/4" surface hole to approx. 300 ft. using natural mud as a circulating medium. Run new 9-5/8" casing to TD. Cement with approx. 250 cu. ft. of Class "B" cement circulated to the surface. Pressure test the casing to approx. 800 PSIG. for 10 minutes. Drill 8-3/4" hole to approx. 5400 ft. using a starch base, permaloid, nondispersed mud as the circulating medium. Log the well. Run new 7" casing to TD with a DV tool at approx. 2000 ft. Cement 1st stage with approx. 750 cu. ft. of 65/35/6 followed by approx. 100 cu. ft. of Class "B" cement. Cement the second stage with approx. 450 cu. ft. of 65/35/12 followed by approx. 100 cu. ft. of Class "B". Circulate cement to surface. Drill out the DV tool. Pressure test the pipe to 1500 PSIG for 10 minutes. Drill out with 6-1/4" bit to approx. 5999 ft. using natural gas as the circulating medium. Log the well. Run new 4-1/2" casing to TD and cement with approx. 150 cu. ft. of 50/50 Poz mix. W.O.C. Perforate and fracture the Gallup zone. Clean the well up. Run new 2-3/8", EUE, 4.7#, J-55 tubing to the Gallup zone. Run rod pump and rods. Set a pumping unit and tanks. Test the well and connect to a gathering system. The gas from this well has previously been dedicated to a transporter.

NOTE: Actual cement volumes will be calculated from caliper log.  
IN ABOVE SPACE DESCRIBE PROPOSED PROGRAM: If proposal is to deepen or plug back, give data on present productive zone and proposed new productive zone. If proposal is to drill or deepen directionally, give pertinent data on subsurface locations and measured and true vertical depths. Give blowout preventer program, if any.

SIGNED W.K. Cooper TITLE Area Operations Manager DATE March 21, 1983  
(This space for Federal or State office use)

PERMIT NO. \_\_\_\_\_ APPROVAL DATE \_\_\_\_\_

APPROVED BY \_\_\_\_\_ TITLE \_\_\_\_\_

CONDITIONS OF APPROVAL, IF ANY:

APPROVED  
AS AMENDED  
DATE  
MAY 11 1983  
JAMES F. SIMS  
DISTRICT ENGINEER

a Federal or a State agency, or both, pursuant to applicable Federal and/or State laws and regulations. Any necessary special instructions concerning the use of this form and the number of copies to be submitted, particularly with regard to local, area, or regional procedures and practices, either are shown below or will be issued by, or may be obtained from, the local Federal and/or State office.

Item 1: If the proposal is to redrill to the same reservoir at a different subsurface location or to a new reservoir, use this form with appropriate notations. Consult applicable State or Federal regulations concerning subsequent work proposals or reports on the well.

Item 4: If there are no applicable State requirements, locations on Federal or Indian land should be described in accordance with Federal requirements. Consult local State or Federal office for specific instructions.

Item 14: Needed only when location of well cannot readily be found by road from the land or lease description. A plat, or plats, separate or on this reverse side, showing the roads to, and the surveyed location of, the well, and any other required information, should be furnished when required by Federal or State agency offices.

Items 15 and 18: If well is to be, or has been directionally drilled, give distances for subsurface location of hole in any present or objective production zone.

Item 22: Consult applicable Federal or State regulations, or appropriate officials, concerning approval of the proposal before operations are started.

All distances must be from the outer boundaries of the Section.

Operator <b>UNION TEXAS PETROLEUM CORPORATION</b>			Lease <b>WILSON</b>		Well No. <b>3</b>
Unit Letter <b>B</b>	Section <b>31</b>	Township <b>29 NORTH</b>	Range <b>10 WEST</b>	County <b>SAN JUAN</b>	
Actual Footage Location of Well: <b>374</b> feet from the <b>NORTH</b> line and <b>2271</b> feet from the <b>EAST</b> line					
Ground Level Elev. <b>5617</b>	Producing Formation <b>GALLUP</b>		Pool <b>UNDESIGNATED</b>		Dedicated Acreage: <b>NW NE 40.00</b> Acres

1. Outline the acreage dedicated to the subject well by colored pencil or hachure marks on the plat below.
2. If more than one lease is dedicated to the well, outline each and identify the ownership thereof (both as to working interest and royalty).
3. If more than one lease of different ownership is dedicated to the well, have the interests of all owners been consolidated by communitization, unitization, force-pooling, etc?

☐ Yes ☒ No If answer is "yes," type of consolidation \_\_\_\_\_

If answer is "no," list the owners and tract descriptions which have actually been consolidated. (Use reverse side of this form if necessary.) \_\_\_\_\_

No allowable will be assigned to the well until all interests have been consolidated (by communitization, unitization, forced-pooling, or otherwise) or until a non-standard unit, eliminating such interests, has been approved by the Division

374

2271

31

RECEIVED

MAY 11 1983

OIL CON. DIV.

DIST. 3

RECEIVED

MAR 21 1983

U.S. GEOLOGICAL SURVEY

## CERTIFICATION

I hereby certify that the information contained herein is true and complete to the best of my knowledge and belief.

*Rudy D. Motto*

Name

Rudy D. Motto

Position

Area Operations Manager

Company

Union Texas Petroleum Corp.

Date

March 1, 1983

I hereby certify that the well location shown on this plat was plotted from field notes of actual surveys made by me or under my supervision, and that the same is true and correct to the best of my knowledge.

*Michael Daly*

Date Surveyed

January 24, 1983

Registered Professional Engineer  
and/or Land Surveyor

Michael Daly

Certificate No.

5992

330 660 990 1320 1650 1980 2310 2640 2970 3300 3630 3960 4290 4620 4950 5280 5610 5940 6270 6600

UNION TEXAS PETROLEUM CORPORATION

WILSON NO. 3

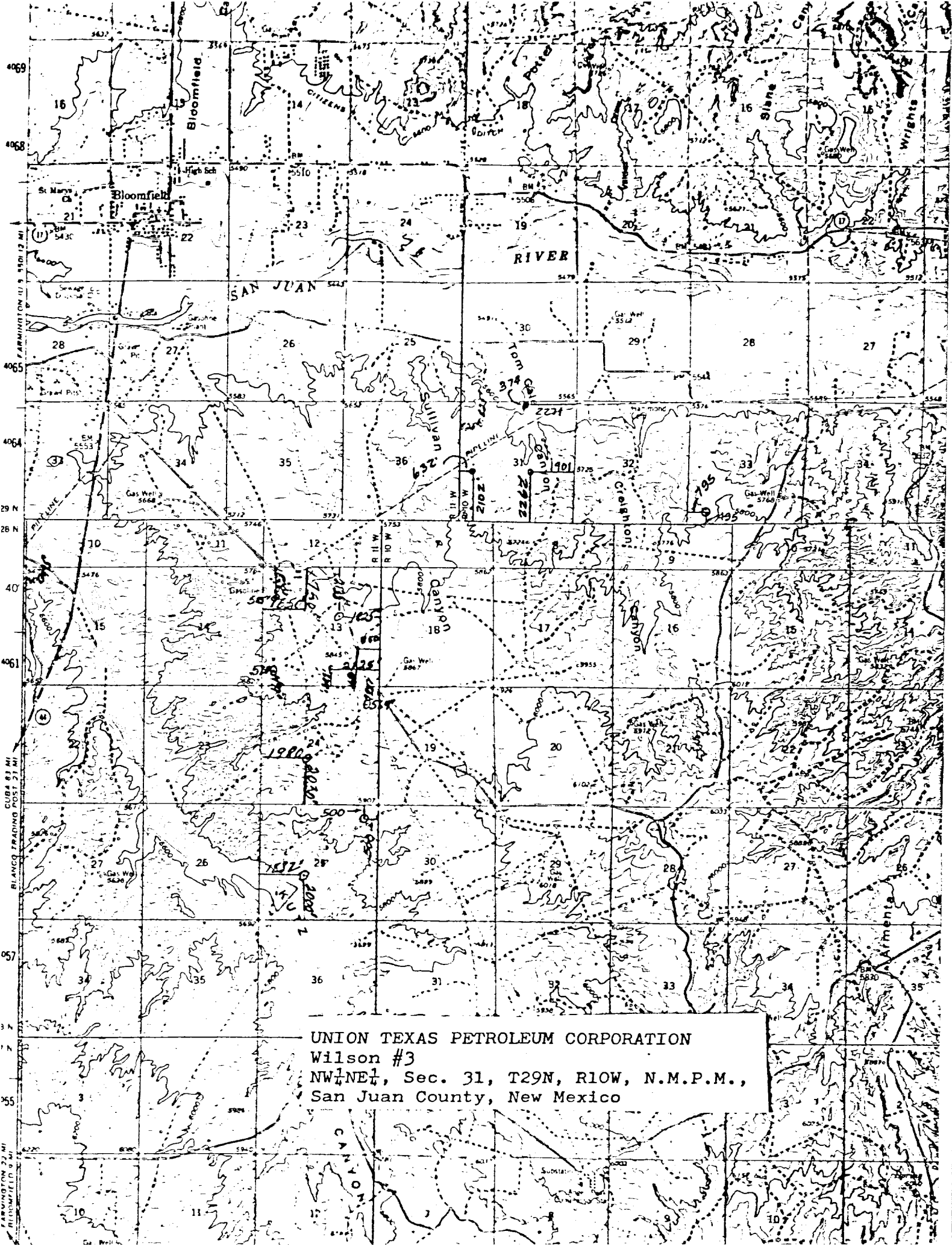
1. The geologic name of the surface formation is "Wasatch".
2. The estimated tops of important geologic markers are:
 

A. Top of the Ojo Alamo	608	ft.
B. Kirtland	785	ft.
C. Fruitland	1570	ft.
D. Pictured Cliffs	1815	ft.
E. Chacra	2405	ft.
F. Cliff House	3395	ft.
G. Point Lookout	4112	ft.
H. Gallup	5349	ft.
3. The estimated depths at which anticipated water, oil or other mineral bearing formations are expected to be encountered are:
 

A. Top of the Ojo Alamo	608	ft.	Water
B. Kirtland	785	ft.	Water
C. Fruitland	1570	ft.	Water
D. Pictured Cliffs	1815	ft.	Gas
E. Chacra	2405	ft.	Gas
F. Cliff House	3395	ft.	Water
G. Point Lookout	4112	ft.	Gas
H. Gallup	5349	ft.	Oil & Gas
4. The casing program is shown on form 9-331C and all casing is new.
5. The lessee's pressure control equipment schematics are attached, along with minimum specifications, testing procedures, and frequencies.
6. The type, estimated volumes, and characteristics of the circulating medium are as follows:
 

A. 0 - 300 +	ft.	Natural Mud
B. 300 + - 5400 +	ft.	Permaloid non-dispersed mud containing approx. 150 sx. gel, 60 sx. of permaloid and 15 sx. of CMC.
C. 5400 + - 5999 +	ft.	Natural Gas
7. The auxiliary equipment to be used will be floats at the bit and a sub on the floor with a full opening valve to be stabbed into the drill pipe when the kelly is not in the string.
8. The well is in an area which is partially developed; therefore, we will not have a testing and coring program. The logging program is as follows:
 

A. G.R. - DIFL
B. GR - CAL
C. F.D.C.- C.N.L.
D. SNL
E. Temperature
9. We do not expect to find any abnormal pressures, temperatures or hydrogen sulfide problems in this partially developed area.
10. The anticipated starting date for this well is: May 21, 1983



UNION TEXAS PETROLEUM CORPORATION  
Wilson #3  
NW 1/4, Sec. 31, T29N, R10W, N.M.P.M.,  
San Juan County, New Mexico