

UNITED STATES
DEPARTMENT OF THE INTERIOR
GEOLOGICAL SURVEY

APPLICATION FOR PERMIT TO DRILL, DEEPEN, OR PLUG BACK

1a. TYPE OF WORK

DRILL ☒DEEPEN ☐PLUG BACK ☐

b. TYPE OF WELL

OIL
WELL ☒GAS
WELL ☐OTHER ☐SINGLE
ZONE ☒MULTIPLE
ZONE ☐

2. NAME OF OPERATOR

Union Texas Petroleum Corporation

3. ADDRESS OF OPERATOR

P. O. Box 808, Farmington, New Mexico 87499

4. LOCATION OF WELL (Report location clearly and in accordance with any State requirements.)

At surface

852 ft./South line and 2002 ft./West line

At proposed prod. zone

Same as above

14. DISTANCE IN MILES AND DIRECTION FROM NEAREST TOWN OR POST OFFICE*

3 miles Southeast of Bloomfield, New Mexico

10. DISTANCE FROM PROPOSED*
LOCATION TO NEAREST
PROPERTY OR LEASE LINE, FT.

852 ft.

16. NO. OF ACRES ASSIGNED

560.00

17. NO. OF ACRES ASSIGNED
TO THIS WELL

40.00

18. DISTANCE FROM PROPOSED LOCATION*

TO NEAREST WELL, DRILLING, COMPLETED,
OR APPLIED FOR, ON THIS LEASE, FT.

898 ft.

19. PROPOSED DEPTH

6028'

20. ROTARY OR CABLE TOOLS

Rotary

21. ELEVATIONS (Show whether DF, BT, GR, etc.)

5691' GR

23.

SIZE OF HOLE	SIZE OF CASING	WEIGHT PER FOOT	SETTING DEPTH	QUANTITY OF CEMENT
13-3/4"	9-5/8"	36.0# K-55	300'	250 cu. ft. (circulated)
8-3/4"	7"	26.0# K-55	5400'	1400 cu. ft. (circulated)
6-1/4"	4-1/2"	11.6# K-55	5200' - 6028'	150 cu. ft. (top of liner)

We desire to drill 13-3/4" surface hole to approx. 300 ft. using natural mud as a circulating medium. Run new 9-5/8" casing to TD. Cement with approx. 250 cu ft of Class "B" cement circulated to the surface. Pressure test the casing to approx. 800 PSIG for 10 minutes. Drill 8-3/4" hole to approx. 5400 ft. using a starch base, permaloid, nondispersed mud as the circulating medium. Log the well. Run new 7" casing to TD with a DV tool at approx. 2000 ft. Cement 1st stage with approx. 750 cu ft of 65/35/6 followed by approx. 100 cu ft of Class "B" cement. Cement the second stage with approx. 450 cu ft of 65/35/12 followed by approx. 100 cu ft of Class "B". Circulate cement to surface. Drill out the DV tool. Pressure test the pipe to 1500 PSIG for 10 minutes. Drill out with 6-1/4" bit to approx. 6028 ft. using natural gas as the circulating medium. Log the well. Run new 4-1/2" casing to TD and cement with approx. 150 cu ft of 50/50 Poz mix. WOC. Perforate and fracture the Gallup zone. Clean the well up. Run new 2-3/8" EUE, 4.7#, J-55 tubing to the Gallup zone. Rod rod pump and rods. Set a pumping unit and tanks. Test the well and connect to a gathering system. The gas from this well has previously been dedicated to a transporter.

NOTE: Actual cement volumes will be calculated from caliper log.

IN ABOVE SPACE DESCRIBE PROPOSED PROGRAM: If proposal is to deepen or plug back, give data on present productive zone and proposed new productive zone. If proposal is to drill or deepen directionally, give pertinent data on subsurface locations and measured and true vertical depths. Give blowout preventer program, if any.

24.

SIGNED

W. K. Cooper

TITLE Field Operations Manager

DATE April 11, 1983

(This space for Federal or State office use)

PERMIT NO.

APPROVAL DATE

APPROVED BY

TITLE

CONDITIONS OF APPROVAL, IF ANY:

APPROVED

AS AMENDED

MAY 11 1983

JAMES F. SIMS
DISTRICT ENGINEER

All distances must be from the outer boundaries of the Section.

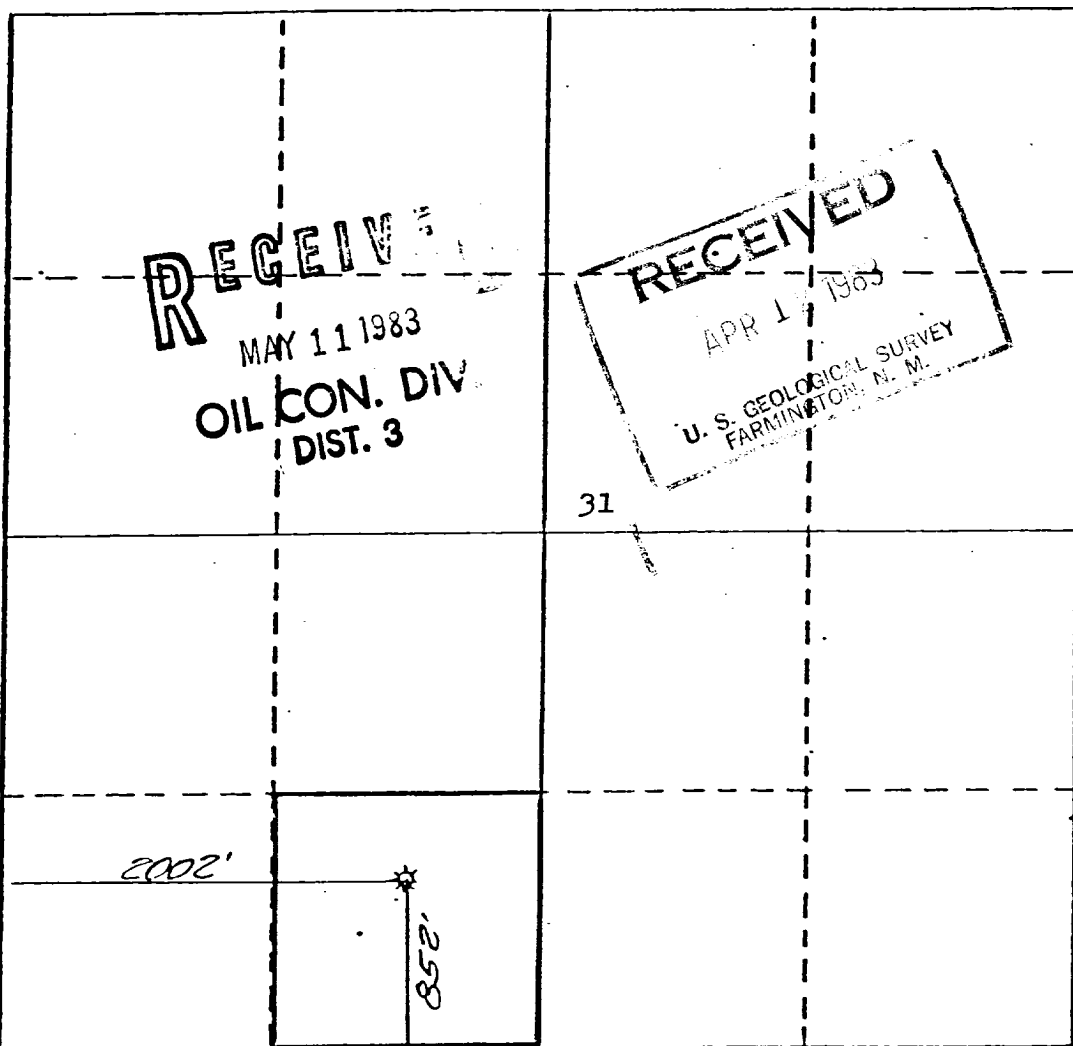
Operator UNION TEXAS PETROLEUM CORPORATION			Lease REID "B"		Well No. 9
Unit Letter N	Section 31	Township 29 NORTH	Range 10 WEST	County SAN JUAN	
Actual Footage Location of Well: 852 feet from the SOUTH line and 2002 feet from the WEST line					
Ground Level Elev. 5691	Producing Formation GALLUP		Pool UNDESIGNATED		Dedicated Acreage; SE SW 40.00 Acres

1. Outline the acreage dedicated to the subject well by colored pencil or hatchure marks on the plat below.
2. If more than one lease is dedicated to the well, outline each and identify the ownership thereof (both as to working interest and royalty).
3. If more than one lease of different ownership is dedicated to the well, have the interests of all owners been consolidated by communitization, unitization, force-pooling, etc?

☐ Yes ☒ No If answer is "yes," type of consolidation _____

If answer is "no," list the owners and tract descriptions which have actually been consolidated. (Use reverse side of this form if necessary.) _____

No allowable will be assigned to the well until all interests have been consolidated (by communitization, unitization, forced-pooling, or otherwise) or until a non-standard unit, eliminating such interests, has been approved by the Division



CERTIFICATION

I hereby certify that the information contained herein is true and complete to the best of my knowledge and belief.

Rudy D. Motto
Name

Rudy D. Motto
Position

Area Operations Manager
Company

Union Texas Petroleum Corp.

Date
April 4, 1983

I hereby certify that the well location shown on this plat was plotted from field notes of actual surveys made by me or under my supervision, and that the same is true and correct to the best of my knowledge and belief.

Michael Daly
Date Surveyed
March 15, 1983

Registered Professional Engineer
and/or Land Surveyor

Michael Daly

Certificate No.
5992

UNION TEXAS PETROLEUM CORPORATION

Reid "B" No. 9

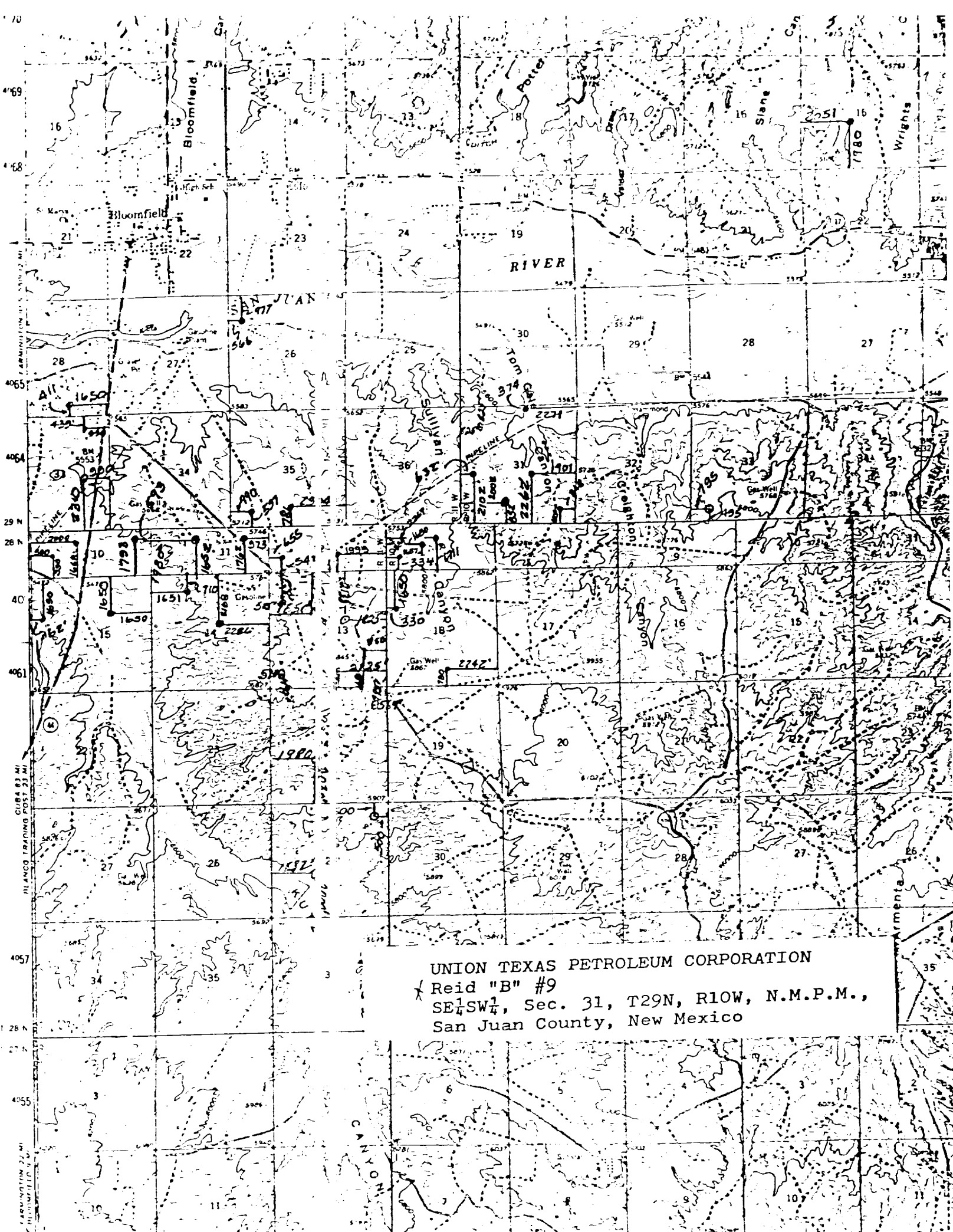
1. The geologic name of the surface formation is "Wasatch".
2. The estimated tops of important geologic markers are:

A. Top of the Ojo Alamo	688	ft.
B. Kirtland	801	ft.
C. Fruitland	1578	ft.
D. Pictured Cliffs	1825	ft.
E. Chacra	2811	ft.
F. Cliff House	3411	ft.
G. Point Lookout	4110	ft.
H. Gallup	5378	ft.
3. The estimated depths at which anticipated water, oil or other mineral bearing formations are expected to be encountered are:

A. Top of the Ojo Alamo	688	ft.	Water
B. Kirtland	801	ft.	Water
C. Fruitland	1578	ft.	Water
D. Pictured Cliffs	1825	ft.	Gas
E. Chacra	2811	ft.	Gas
F. Cliff House	3411	ft.	Water
G. Point Lookout	4110	ft.	Gas
H. Gallup	5378	ft.	Oil & Gas
4. The casing program is shown on form 9-331C and all casing is new.
5. The lessee's pressure control equipment schematics are attached, along with minimum specifications, testing procedures, and frequencies.
6. The type, estimated volume, and characteristics of the circulating medium are as follows:

A. 0 - 300 ±	ft.	Natural Mud
B. 300 ± - 5400 ±	ft.	Permaloid non-dispersed mud containing approx. 150 sx. gel, 60 sx. of permaloid and 15 sx. of CMC.
C. 5400 ± - 6028 ±	ft.	Natural Gas
7. The auxiliary equipment to be used will be floats at the bit and a sub on the floor with a full opening valve to be stabbed into the drill pipe when the kelly is not in the string.
8. The well is in an area which is partially developed; therefore, we will not have a testing and coring program. The logging program is as follows:

A. G.R. - DIFL
B. GR - CAL
C. F.D.C. - C.N.L.
9. We do not expect to find any abnormal pressures, temperatures or hydrogen sulfide problems in this partially developed area.
10. The anticipated starting date for this well is: May 15, 1983



UNION TEXAS PETROLEUM CORPORATION
Reid "B" #9
SE $\frac{1}{4}$ SW $\frac{1}{4}$, Sec. 31, T29N, R10W, N.M.P.M.,
San Juan County, New Mexico

Caller Service 4104
Farmington, New Mexico 87499

CERTIFIED--RETURN RECEIPT REQUESTED

23 MAY 1984

5-11-83

F. Loc. 852/S; 2002/W E. 5691 GL Spd. _____ Cu. ft. _____ Comp. _____ TD _____ PB _____
 ng S. _____ @ _____ W _____ Sx. Int. _____ @ _____ W _____ Sx. Pr. _____ @ _____ W _____ Sx. I. _____ @ _____
 Perf. _____ Prod. Stim. _____ I Gas _____

T Gas
R
A
N
S

I.P. _____ BO/D _____ Grav. _____ 1st Del. Gas
 _____ MCF/D After _____ Hrs. SICP _____ - PSI After _____ Days GOR _____ 1st Del. Oil

TOPS		NiTD	Well Log	TEST DATA						
Op Alamo		C - 103	Plat	Schd.	PC	Q	PW	PD	D	Ref.No.
Kirtland		C - 104	Electric Log							
Fruitland			C - 122							
Pictured Cliffs		Ditr	Dfa							
Chacra		Datr	Dac							
Cliff House										
Menefee										
Point Lookout										
Mancos										
Gallup										
Greenhorn										
Dakota										
Entrada										
			Acres	40						

R-7425

Armenta Gal Co. SJ S 31 T 29N R 10W UN Oper. Union Tx Petro Corp Lse. Reid B No. 9

8. 6 Congress L...
New Mexico, lease Santa Fe-047039-C.

9. 8 Congress Indian, SW¹/₄SW¹/₄ sec. 7, T. 28 N., R. 10 W., San Juan County,
New Mexico, lease Santa Fe-047039-C.

As discussed with Bill Cooper of your company on May 18, 1964 the subject APD is rescinded and returned due to drilling not being commenced within one year of the approval date.

RECEIVED
MAY 24 1984

MAY 24 1984
OIL CON. DIV.
DIST. 3

ABANDONED LOCATION