

UNITED STATES  
DEPARTMENT OF THE INTERIOR  
GEOLOGICAL SURVEY

## APPLICATION FOR PERMIT TO DRILL, DEEPEN, OR PLUG BACK

## 1a. TYPE OF WORK

DRILL ☒DEEPEN ☐PLUG BACK ☐

## b. TYPE OF WELL

OIL  
WELL ☐GAS  
WELL ☒

OTHER

SINGLE  
ZONE ☒MULTIPLE  
ZONE ☐

## 2. NAME OF OPERATOR

Southland Royalty Company

## 3. ADDRESS OF OPERATOR

P.O. Drawer 570, Farmington, New Mexico 87499

## 4. LOCATION OF WELL (Report location clearly and in accordance with any State requirements.)

At surface

1555' FSL &amp; 1210' FEL

At proposed prod. zone

## 14. DISTANCE IN MILES AND DIRECTION FROM NEAREST TOWN OR POST OFFICE

3 miles South of Bloomfield, New Mexico

## 15. DISTANCE FROM PROPOSED\*

LOCATION TO NEAREST  
PROPERTY OR LEASE LINE, FT.  
(Also to nearest drlg. unit line, if any)

1210'

18. DISTANCE FROM PROPOSED LOCATION\*  
TO NEAREST WELL, DRILLING, COMPLETED,  
OR APPLIED FOR, ON THIS LEASE, FT.

400'

16. NO. OF ACRES, I.E.L.  
2122.95

## 19. PROPOSED DEPTH

6620'

17. NO. OF ACRES ASSIGNED  
TO THIS WELL

268.42

## 20. ROTARY OR CABLE TOOLS

Rotary

## 21. ELEVATIONS (Show whether to surface or to proposed depth)

5694' GL

DRILLING OPERATIONS AUTHORIZED ARE  
SUBJECT TO COMPLIANCE WITH ATTACHED  
"GENERAL REQUIREMENTS"

## 22. APPROX. DATE WORK WILL START\*

May 1, 1983

## 23. PROPOSED CASING AND CEMENTING PROGRAM

This action is subject to administrative  
appeal pursuant to 30 CFR 290.

SIZE OF HOLE	SIZE OF CASING	WEIGHT PER FOOT	SETTING DEPTH	QUANTITY OF CEMENT
12-1/4"	8-5/8"	24#, K-55	200'	165 cu.ft. (Circ to surface)
7-7/8"	5-1/2"	15.5#, K-55	6620'	Stge 1: 289 cu.ft. (Cover Gallup) Stge 2: 289 cu.ft. (Cover Cliff House) Stge 3: 385 cu.ft. (Cover Ojo Alamo)

Surface formation is Nacimiento.

Top of Ojo Alamo sand is at 900'.

Top of Pictured Cliffs sand is at 2040'.

Fresh water mud will be used to drill from surface to total depth.

It is anticipated that an IEL will be run from total depth to surface casing and

GR-Density will be run from total depth to 3000'.

No abnormal pressures or poisonous gases are anticipated in this well.

It is expected that this well will be drilled before May 31, 1983.

This depends on time required for approvals, rig availability and the weather.

Gas is dedicated.

IN ABOVE SPACE DESCRIBE PROPOSED PROGRAM: If proposal is to deepen or plug back, give data on present productive zone and proposed new productive zone. If proposal is to drill or deepen directionally, give pertinent data on subsurface locations and measured and true vertical depths. Give blowout preventer program, if any.

24.

SIGNED

*R. E. Filder*

TITLE

District Engineer

DATE

April 4, 1983

(This space for Federal or State office use)

PERMIT NO.

APPROVED BY

CONDITIONS OF APPROVAL, IF ANY:

TITLE

RECEIVED

APPROVED  
AS AMENDEDJUN 08 1983  
*James F. Sims*  
JAMES F. SIMS  
DISTRICT ENGINEER

NM000

NEW MEXICO OIL CONSERVATION COMMISSION  
WELL LOCATION AND ACREAGE DEDICATION PLAT

Form O-128  
Supersedes O-128  
Effective 1-1-60

All distances must be from the outer boundaries of the Section

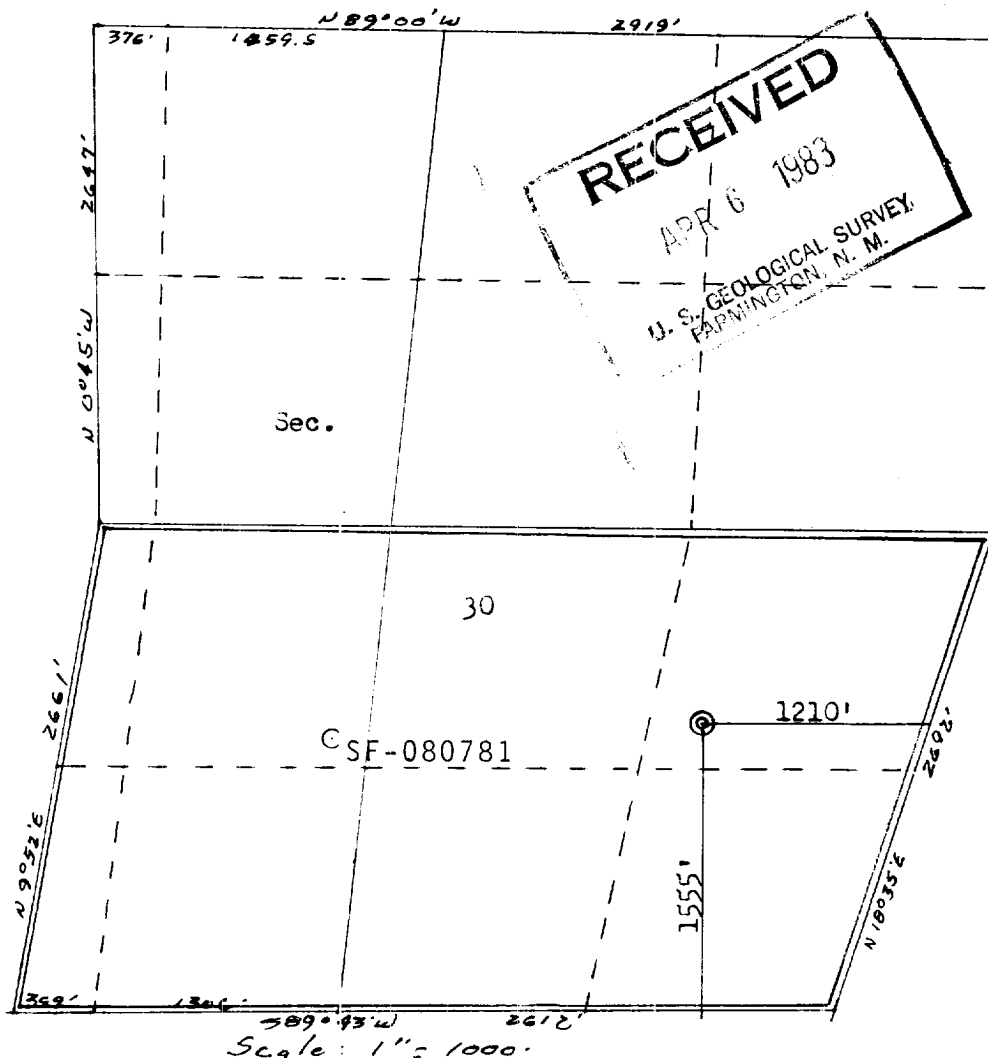
Operator <b>SOUTHLAND ROYALTY COMPANY</b>			Lease <b>CAIN</b>		Well No. <b>16E</b>
Unit Letter <b>I</b>	Section <b>30</b>	Township <b>29N</b>	Range <b>9W</b>	County <b>San Juan</b>	
Actual Footage Location of Well: <b>1555</b> feet from the <b>South</b> line and <b>1210</b> feet from the <b>East</b> line					
Ground Level Elev. <b>5694</b>	Producing Formation <b>Dakota</b>		Pool <b>Basin</b>		Dedicated Acreage: <b>268.42</b> Acres

1. Outline the acreage dedicated to the subject well by colored pencil or hachure marks on the plat below.
2. If more than one lease is dedicated to the well, outline each and identify the ownership thereof (both as to working interest and royalty).
3. If more than one lease of different ownership is dedicated to the well, have the interests of all owners been consolidated by communitization, unitization, force-pooling, etc?

☐ Yes ☐ No If answer is "yes," type of consolidation \_\_\_\_\_

If answer is "no," list the owners and tract descriptions which have actually been consolidated. (Use reverse side of this form if necessary.) \_\_\_\_\_

No allowable will be assigned to the well until all interests have been consolidated (by communitization, unitization, forced-pooling, or otherwise) or until a non-standard unit, eliminating such interests, has been approved by the Commission.



CERTIFICATION

I hereby certify that the information contained herein is true and complete to the best of my knowledge and belief.

*R. E. Fielder*

Name  
**R. E. Fielder**  
Position  
**District Engineer**  
Company  
**Southland Royalty Company**  
Date  
**April 4, 1983**

I hereby certify that the well location shown on this plat was plotted from field notes of actual surveys made by me or under my supervision, and that the same is true and correct to the best of my knowledge and belief.

Date Surveyed  
**February 28, 1983**  
Registered Professional Engineer and Land Surveyor  
**3350**  
*B. KERR, JR.*  
**3950**