

UNITED STATES  
DEPARTMENT OF THE INTERIOR  
GEOLOGICAL SURVEY

## APPLICATION FOR PERMIT TO DRILL, DEEPEN, OR PLUG BACK

## 1a. TYPE OF WORK

DRILL ☒DEEPEN ☐PLUG BACK ☐

## b. TYPE OF WELL

OIL  
WELL ☐GAS  
WELL ☒

OTHER

SINGLE  
ZONE ☒MULTIPLE  
ZONE ☐

## 2. NAME OF OPERATOR

Tenneco Oil Company

## 3. ADDRESS OF OPERATOR

P.O. Box 3249, Englewood, CO 80155

## 4. LOCATION OF WELL (Report location clearly and in accordance with any State requirements.)

At surface

1650' FSL, 1700' FEL

At proposed prod. zone

Same as above

## 14. DISTANCE IN MILES AND DIRECTION FROM NEAREST TOWN OR POST OFFICE\*

Approximately 5 miles SE of Blanco, New Mexico

## 15. DISTANCE FROM PROPOSED\*

LOCATION TO NEAREST  
PROPERTY OR LEASE LINE, FT.  
(Also to nearest drlg. unit line, if any)

1650'

## 16. NO. OF ACRES IN LEASE

714.72

17. NO. OF ACRES ASSIGNED  
TO THIS WELL

160 152.89

18. DISTANCE FROM PROPOSED LOCATION\*  
TO NEAREST WELL, DRILLING, COMPLETED,  
OR APPLIED FOR, ON THIS LEASE, FT.

## 19. PROPOSED DEPTH

3,320'

## 20. ROTARY OR CABLE TOOLS

Rotary

## 21. ELEVATIONS (Show whether DF, RT, GR, etc.)

5716' GR

DRILLING OPERATIONS AUTHORIZED ARE  
SUBJECT TO COMPLIANCE WITH ATTACHED  
"GENERAL REQUIREMENTS"

## 22. APPROX. DATE WORK WILL START\*

This action is subject to administrative  
appeal pursuant to 30 CFR 290.

## 23. PROPOSED CASING AND CEMENTING PROGRAM

SIZE OF HOLE	SIZE OF CASING	WEIGHT PER FOOT	SETTING DEPTH	QUANTITY OF CEMENT
9-7/8"	7-5/8"	26.4#	± 260'	Circ to surface
6-3/4"	2-7/8"	6.5#	± 3320'	Circ to surface

The gas is dedicated

See Attached

RECEIVED  
NOV 29 1983  
OIL CON. DIV. I  
DIST. 3

IN ABOVE SPACE DESCRIBE PROPOSED PROGRAM: If proposal is to deepen or plug back, give data on present productive zone and proposed new productive zone. If proposal is to drill or deepen directionally, give pertinent data on subsurface locations and measured and true vertical depths. Give blowout preventer program, if any.

24.

SIGNED

*Dennis Wilson*

TITLE Production Analyst

DATE October 18, 1983

(This space for Federal or State office use)

PERMIT NO. 12

APPROVAL DATE

APPROVED BY

TITLE

CONDITIONS OF APPROVAL, IF ANY:

DATE

APPROVED  
AS AMENDED

NOV 25 1983

M. MILLENBACH  
AREA MANAGER

\*See Instructions On Reverse Side

NMOCC

All distances must be from the outer boundaries of the Section.

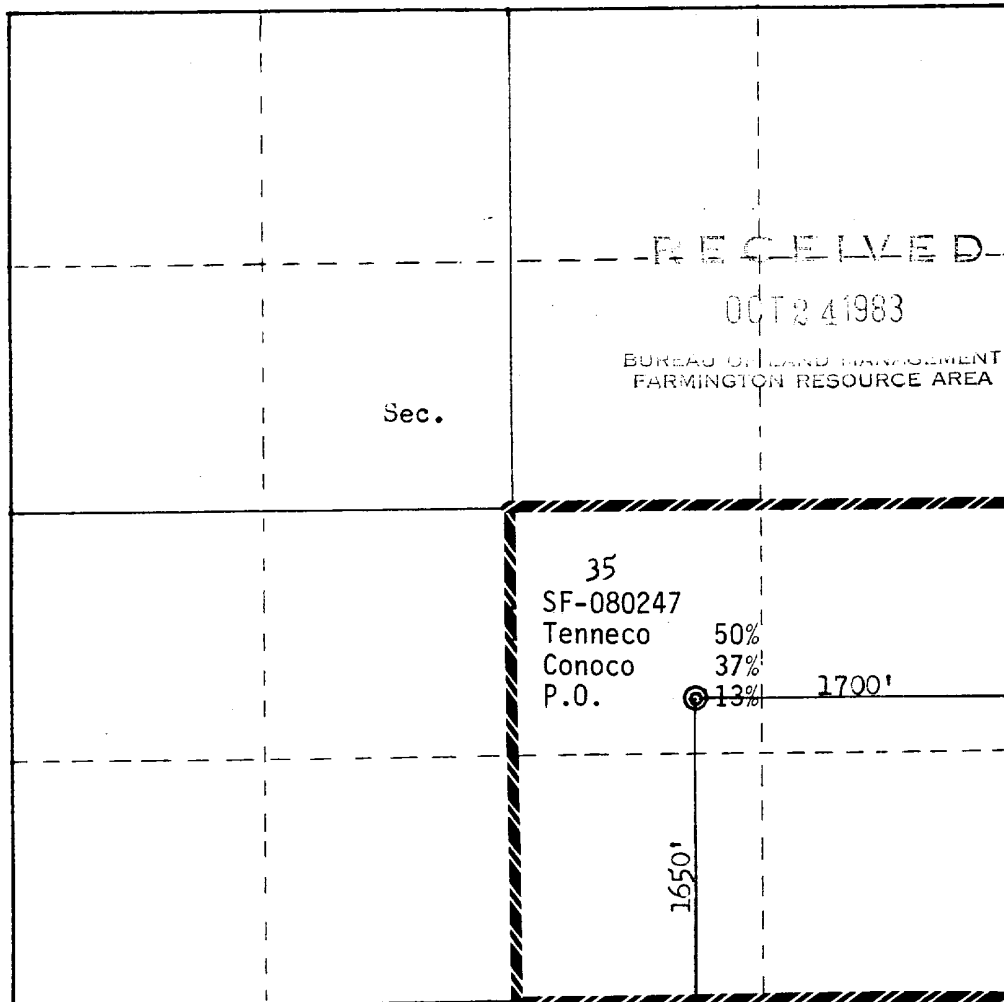
Operator <b>TENNECO OIL COMPANY</b>			Lease <b>WARREN</b>		Well No. <b>6</b>
Unit Letter <b>J</b>	Section <b>35</b>	Township <b>29N</b>	Range <b>9W</b>	County <b>San Juan</b>	
Actual Footage Location of Well: <b>1650</b> feet from the <b>South</b> line and <b>1700</b> feet from the <b>East</b> line					
Ground Level Elev. <b>5716</b>	Producing Formation <b>Chacra</b>	Pool <b>Otero Chacra</b>		Dedicated Acreage: <b>160152.89</b> Acres	

1. Outline the acreage dedicated to the subject well by colored pencil or hatchure marks on the plat below.
2. If more than one lease is dedicated to the well, outline each and identify the ownership thereof (both as to working interest and royalty).
3. If more than one lease of different ownership is dedicated to the well, have the interests of all owners been consolidated by communitization, unitization, force-pooling, etc?

☐ Yes ☐ No If answer is "yes," type of consolidation \_\_\_\_\_

If answer is "no," list the owners and tract descriptions which have actually been consolidated. (Use reverse side of this form if necessary.) \_\_\_\_\_

No allowable will be assigned to the well until all interests have been consolidated (by communitization, unitization, forced-pooling, or otherwise) or until a non-standard unit, eliminating such interests, has been approved by the Commission.

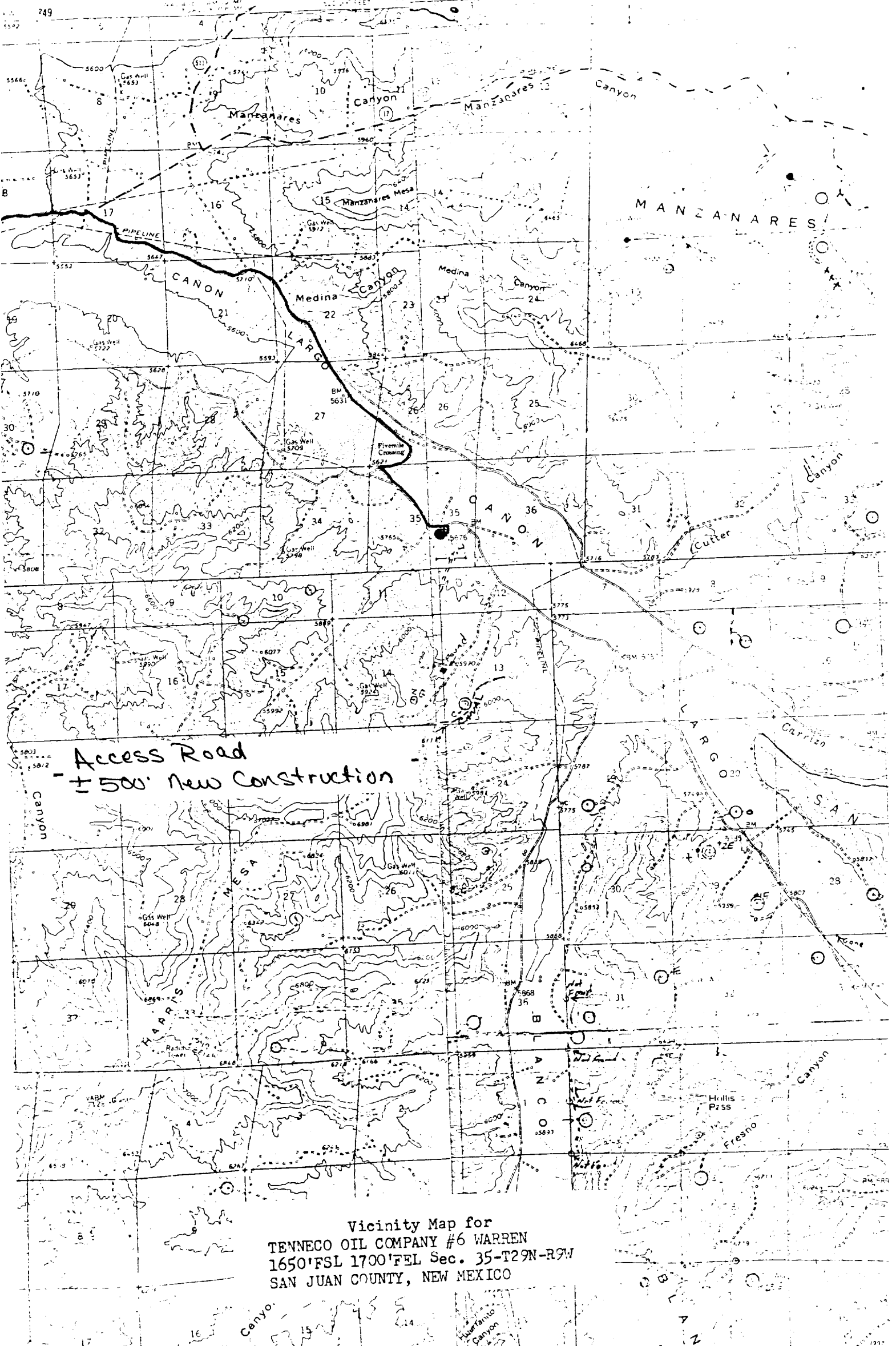


Scale: 1"=1000'

CERTIFICATION	
I hereby certify that the information contained herein is true and complete to the best of my knowledge and belief.	
Name	<i>Denise Wilson</i>
Position	Production Analyst
Company	Tenneco Oil Company
Date	October 17, 1983
I hereby certify that the well location shown on this plat was plotted from field notes of actual surveys made by me or under my supervision, and that the same is true and correct to the best of my knowledge and belief.	
Date Surveyed	September 28, 1983
Registered Professional Engineer and Land Surveyor	<i>Fred B. Kerr Jr.</i>
Certificate No.	3950

BLOOMFIELD QUADRANGLE  
NEW MEXICO-SAN JUAN CO  
15 MINUTE SERIES (TOPOGRAPHIC)

UNITED STATES  
DEPARTMENT OF THE INTERIOR  
GEOLOGICAL SURVEY



Vicinity Map for  
TENNECO OIL COMPANY #6 WARREN  
1650' FSL 1700' FEL Sec. 35-T29N-R9W  
SAN JUAN COUNTY, NEW MEXICO