

UNITED STATES
DEPARTMENT OF THE INTERIOR
GEOLOGICAL SURVEY

APPLICATION FOR PERMIT TO DRILL, DEEPEN, OR PLUG BACK

1a. TYPE OF WORK

DRILL ☒DEEPEN ☐PLUG BACK ☐

b. TYPE OF WELL

OIL
WELL ☐GAS
WELL ☒

OTHER

SINGLE
ZONE ☒MULTIPLE
ZONE ☐

2. NAME OF OPERATOR

Pioneer Production

3. ADDRESS OF OPERATOR

P O Box 208, Farmington, NM 87499

4. LOCATION OF WELL (Report location clearly and in accordance with any State requirements*)

At surface

800' FNL - 850' FWL

At proposed prod. zone

14. DISTANCE IN MILES AND DIRECTION FROM NEAREST TOWN OR POST OFFICE*

3 miles west of Bloomfield, NM

15. DISTANCE FROM PROPOSED*

LOCATION TO NEAREST

PROPERTY OR LEASE LINE, FT. 800' FNL

(Also to nearest drlg. unit line, if any)

18. DISTANCE FROM PROPOSED LOCATION*

TO NEAREST WELL, DRILLING, COMPLETED,

OR APPLIED FOR, ON THIS LEASE, FT. (Pioneer Maxey#1E) ± 1/4 mile

21. ELEVATIONS (Show whether DF, RT, GR, etc.)

5665' GL

DRILLING OPERATIONS AUTHORIZED ARE
SUBJECT TO COMPLIANCE WITH ATTACHED"GENERAL REQUIREMENTS"
PROPOSED CASING AND CEMENTING PROGRAM

23.

SIZE OF HOLE	SIZE OF CASING	WEIGHT PER FOOT	SETTING DEPTH	QUANTITY OF CEMENT
12-1/4"	8-5/8"	24#	200'	147 cf circulated to surface
7-7/8"	4-1/2"	10.5#	3160'	830 cf circulated to surface

Plan to drill with spud mud, set 200' of 8-5/8" OD, 24# surface casing. Will then drill with a water-mud-gel mixture through the Chacra formation. Plan to run IES and CDL logs, and if deemed productive, will run 4 1/2" OD, 10.5# casing & cement in 1 stage. Will selectively perforate Chacra formation, frac, clean out after frac, and complete well.

GAS IS DEDICATED.

RECEIVED

APR 03 1984

OIL CON. DIV.
DIST. 3

IN ABOVE SPACE DESCRIBE PROPOSED PROGRAM: If proposal is to deepen or plug back, give data on present productive zone and proposed new productive zone. If proposal is to drill or deepen directionally, give pertinent data on subsurface locations and measured and true vertical depths. Give blowout preventer program, if any.

24.

SIGNED

Sherman E. Dugan

(This space for Federal or State office use)

TITLE

Geologist

PERMIT NO.

APPROVAL DATE

APPROVED BY

TITLE

CONDITIONS OF APPROVAL, IF ANY:

*See Instructions On Reverse Side

NMOCC

30-045-25942

5. LEASE DESIGNATION AND SERIAL NO.

NM 013885

6. IF INDIAN, ALLOTTEE OR TRIBE NAME

7. UNIT AGREEMENT NAME

8. FARM OR LEASE NAME

Maxey Gas Com "C"

9. WELL NO.

2

10. FIELD AND POOL, OR WILDCAT

Otero Chacra

11. SEC., T., R., M., OR BLK.
AND SURVEY OR AREA.

D

Sec. 24, T29N, R12W, NMPM

12. COUNTY OR PARISH 13. STATE

San Juan

NM

17. NO. OF ACRES ASSIGNED
TO THIS WELL

160 152.26

20. ROTARY OR CABLE TOOLS

Rotary

22. APPROX. DATE WORK WILL START*

April 1, 1984

This action is subject to administrative
appeal pursuant to 30 CFR 290.

OIL CONSERVATION DIVISION

P. O. BOX 2088

Form C-102
Revised 10-1-78STATE OF NEW MEXICO
ENERGY AND MINERALS DEPARTMENT

SANTA FE, NEW MEXICO 87501

All distances must be from the outer boundaries of the Section.

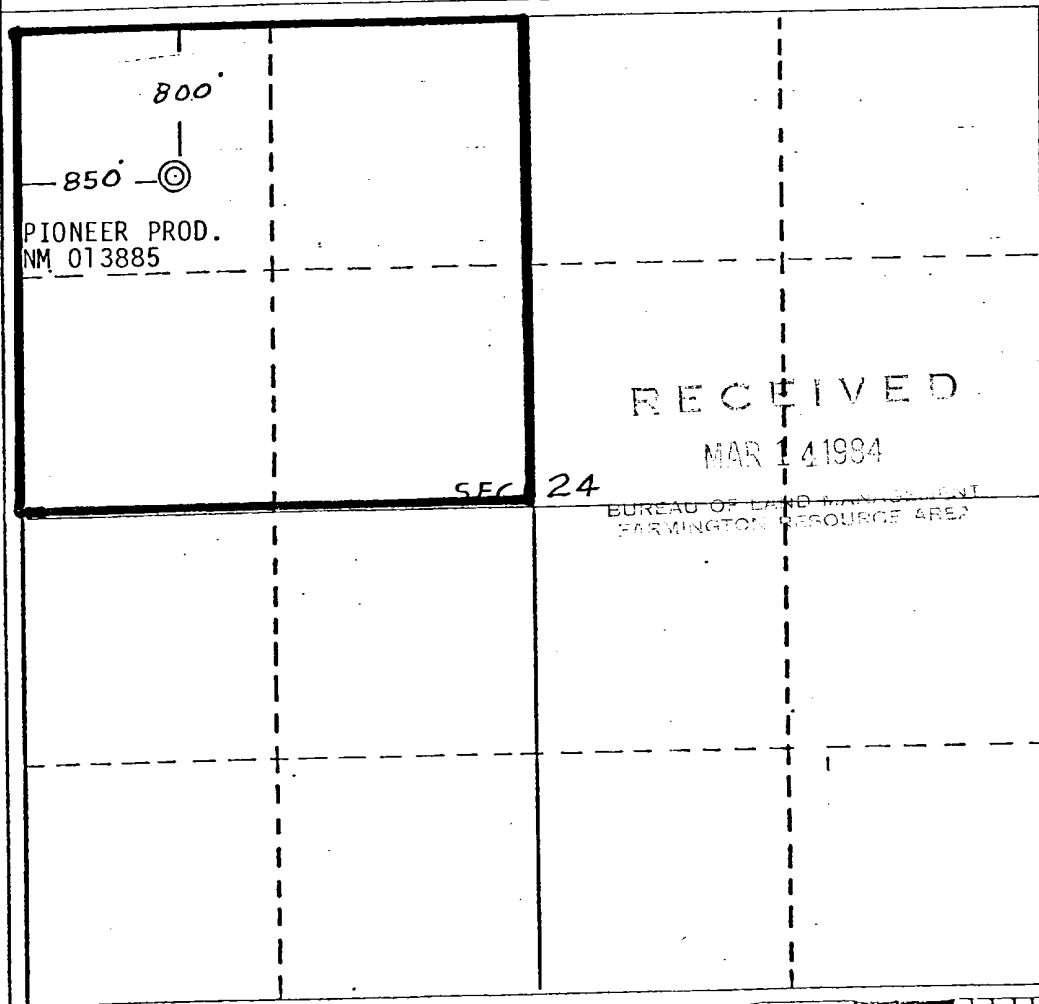
Operator Pioneer Production Corporation			Lease Maxey Gas Com C		Well No. 2
Unit Letter D	Section 24	Township 29 North	Range 12 West	County San Juan	
Actual Footage Location of Wells: 800 feet from the North line and 850 feet from the West line					
Ground Level Elev. 5665	Producing Formation Chacra	Pool Otero Chacra		Dedicated Acreage: 160 15.236 Acres	

1. Outline the acreage dedicated to the subject well by colored pencil or hatchure marks on the plat below.
2. If more than one lease is dedicated to the well, outline each and identify the ownership thereof (both as to working interest and royalty).
3. If more than one lease of different ownership is dedicated to the well, have the interests of all owners been consolidated by communitization, unitization, force-pooling, etc?

☐ Yes ☐ No If answer is "yes," type of consolidation _____

If answer is "no," list the owners and tract descriptions which have actually been consolidated. (Use reverse side of this form if necessary.) _____

No allowable will be assigned to the well until all interests have been consolidated (by communitization, unitization, forced-pooling, or otherwise) or until a non-standard unit, eliminating such interests, has been approved by the Division.



CERTIFICATION

I hereby certify that the information contained herein is true and complete to the best of my knowledge and belief.

Sherman E. Dugan

Name

Sherman E. Dugan

Position

Geologist

Company

Dugan Production Corp.

Date

3-8-84

I hereby certify that the location shown on this plat was plotted from field notes of actual survey made by me or under my supervision, and that the same is true and correct to the best of my knowledge and belief.

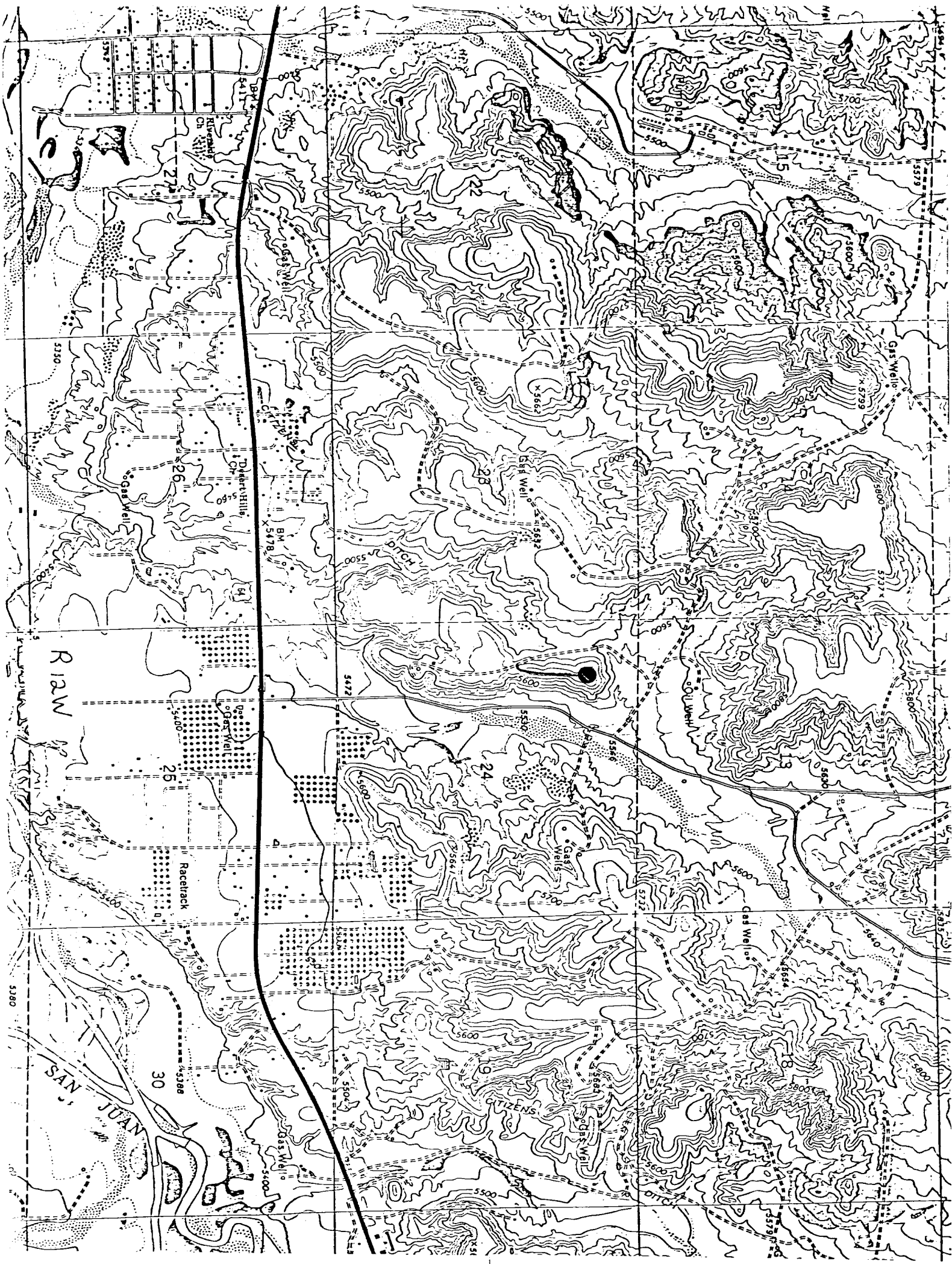
Date Surveyed

February 24, 1984

Registered Professional Engineer
and/or Land Surveyor*Edgar L. Risenhoover*

Certificate No. 5979

Edgar L. Risenhoover, L.S.



PIONEER PRODUCTION - Maxey Gas Com "C" #2
Existing Roads Exhibit E

Distance from nearest town or reference pt.
3 miles west of Bloomfield, NM

Type of surface dirt

Conditions good

Other

PIONEER PRODUCTION - Maxey Gas Com "C" #2
Planned Access Road(s) Exhibit E

Width 20' Maximum grades 5%

Drainage design None required

Cuts & Fills 3' cut at intersection, take off

Surfacing material on site

Turnouts

Culverts

Gates

Cattleguards

Fence cuts