

UNITED STATES
DEPARTMENT OF THE INTERIOR
GEOLOGICAL SURVEY

30-045-25956

APPLICATION FOR PERMIT TO DRILL, DEEPEN, OR PLUG BACK

1a. TYPE OF WORK

DRILL ☒DEEPEN ☐PLUG BACK ☐

b. TYPE OF WELL

OIL
WELL ☐GAS
WELL ☒

OTHER

SINGLE
ZONE ☒MULTIPLE
ZONE ☐

2. NAME OF OPERATOR

Pioneer Production

3. ADDRESS OF OPERATOR

P O Box 208, Farmington, NM 87499

4. LOCATION OF WELL (Report location clearly and in accordance with any State requirements.)

At surface

1000' FSL - 830' FEL

At proposed prod. zone

14. DISTANCE IN MILES AND DIRECTION FROM NEAREST TOWN OR POST OFFICE*

3 miles west of Bloomfield, NM

15. DISTANCE FROM PROPOSED*

LOCATION TO NEAREST
PROPERTY OR LEASE LINE, FT. 830' FEL
(Also to nearest drlg. unit line, if any)

16. NO. OF ACRES IN LEASE

480

17. NO. OF ACRES ASSIGNED
TO THIS WELL

160

18. DISTANCE FROM PROPOSED LOCATION*

TO NEAREST WELL, DRILLING, COMPLETED, approx. 1/4 mi.
OR APPLIED FOR, ON THIS LEASE, FT. (Pioneer Reid #1E)

19. PROPOSED DEPTH

3160'

20. ROTARY OR CABLE TOOLS

Rotary

21. ELEVATIONS (Show whether DF, RT, GR, etc.)

5610' GL

23.

DRILLING OPERATIONS AUTHORIZED ARE
SUBJECT TO COMPLIANCE WITH ATTACHED
"GENERAL REQUIREMENTS"

PROPOSED CASING AND CEMENTING PROGRAM

22. APPROX. DATE WORK WILL START*

April 1, 1984

SIZE OF HOLE	SIZE OF CASING	WEIGHT PER FOOT	SETTING DEPTH
12-1/4"	8-5/8"	24#	200'
7-7/8"	4-1/2"	10.5#	3160'

This action is subject to administrative
appeal pursuant to 30 CFR 250.147 cf circulated to surface
830 cf circulated to surface

Plan to drill with spud mud, set 200' of 8-5/8" OD, 24# surface casing. Will then drill with a water-mud-gel mixture through the Chacra formation. Plan to run IES and CDL logs, and if deemed productive, will run 4 1/2" OD, 10.5# casing & cement in 1 stage. Will selectively perforate Chacra formation, frac, clean out after frac, and complete well.

GAS IS DEDICATED.

RECEIVED

APR 25 1984

OIL CON. DIV.
DIST. 3

IN ABOVE SPACE DESCRIBE PROPOSED PROGRAM: If proposal is to deepen or plug back, give data on present productive zone and proposed new productive zone. If proposal is to drill or deepen directionally, give pertinent data on subsurface locations and measured and true vertical depths. Give blowout preventer program, if any.

24.

SIGNED

Sherman E. Dugan

TITLE

Geologist

(This space for Federal or State office use)

PERMIT NO.

APPROVAL DATE

APPROVED BY

TITLE

CONDITIONS OF APPROVAL, IF ANY:

DATE 3-8-84

APPROVED

AS AMENDED

APR 23 1984

Darryl S. Clark
AREA MANAGER
FARMINGTON RESOURCE AREA*See Instructions On Reverse Side
NMOCC

OIL CONSERVATION DIVISION

STATE OF NEW MEXICO
ENERGY AND MINERALS DEPARTMENTP. O. BOX 2088
SANTA FE, NEW MEXICO 87501Form C-102
Revised 10-1-78

All distances must be from the outer boundaries of the Section.

Operator Pioneer Production Corporation		Lease Reid C		Well No. 2	
Unit Letter P	Section 13	Township 29 North	Range 12 West	County San Juan	
Actual Footage Location of Well: 1000 feet from the South line and 830 feet from the East line					
Ground Level Elev. 5610	Producing Formation Chacra	Pool Otero Chacra		Dedicated Acreage: 160 Acres	

1. Outline the acreage dedicated to the subject well by colored pencil or hatchure marks on the plat below.
2. If more than one lease is dedicated to the well, outline each and identify the ownership thereof (both as to working interest and royalty).
3. If more than one lease of different ownership is dedicated to the well, have the interests of all owners been consolidated by communitization, unitization, force-pooling, etc?

☐ Yes ☐ No If answer is "yes," type of consolidation _____

If answer is "no," list the owners and tract descriptions which have actually been consolidated. (Use reverse side of this form if necessary.) _____

No allowable will be assigned to the well until all interests have been consolidated (by communitization, unitization, forced-pooling, or otherwise) or until a non-standard unit, eliminating such interests, has been approved by the Division.

RECEIVED APR 25 1984 OIL CON. DIV. DIST. 3		RECEIVED MAR 14 1984 BUREAU OF LAND MANAGEMENT FARMINGTON RESOURCE AREA	
SEC. 13		SF 075587 Pioneer Prod.	
		830' 1000'	

CERTIFICATION

I hereby certify that the information contained herein is true and complete to the best of my knowledge and belief.

Sherman E. Dugan

Name
Sherman E. Dugan

Position
Geologist

Company
Dugan Production Corp.

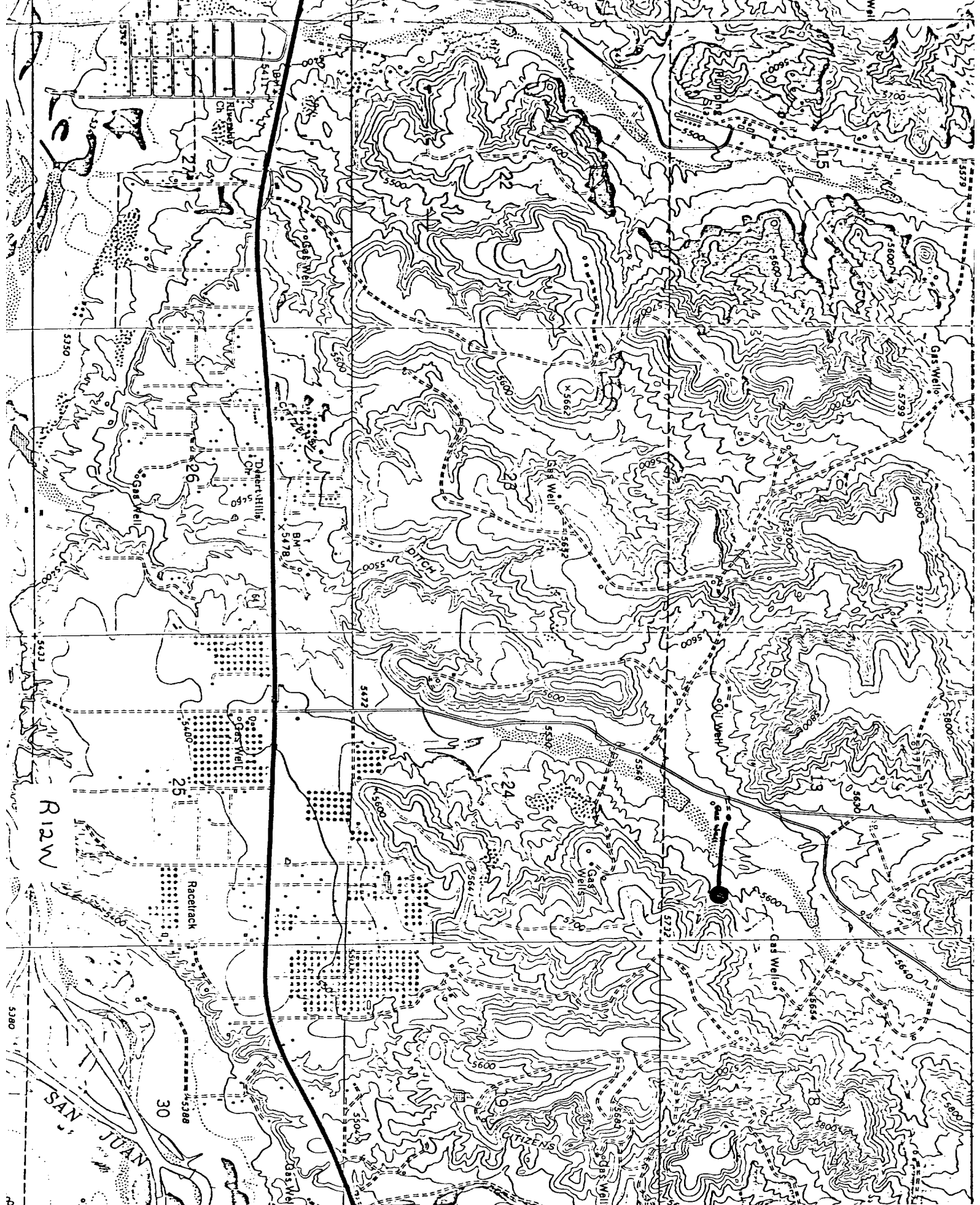
Date
3-8-84

I hereby certify that the location shown on this plat was plotted from field notes of actual survey made by me or under my supervision, and that the same is true and correct to the best of my knowledge and belief.

Date Surveyed
February 23, 1984

Registered Professional Engineer
and/or Land Surveyor

Edgar L. Risenhoover
Certificate No. 5979
Edgar L. Risenhoover, L.S.



Existing Roads PIONEER PROD. Reid "C" #2
Distance from nearest town or reference pt.
3 miles west of Bloomfield, NM
Type of surface dirt
Conditions good
Other _____

Planned Access Road(s) Exhibit E
PIONEER PRODUCTION CORP. - Reid "C" #2
Width 20' Maximum grades 4%
Drainage design None
Cuts & Fills None
Surfacing material on site
Turnouts
Culverts
Gates
Cattleguards
Fence cuts

