

UNITED STATES  
DEPARTMENT OF THE INTERIOR  
BUREAU OF LAND MANAGEMENT

APPLICATION FOR PERMIT TO DRILL, DEEPEN, OR PLUG BACK

1a. TYPE OF WORK

DRILL ☒

DEEPEN ☐

PLUG BACK ☐

b. TYPE OF WELL

OIL WELL ☐

GAS WELL ☒

OTHER

SINGLE ZONE ☒

MULTIPLE ZONE ☐

2. NAME OF OPERATOR

Union Texas Petroleum Corporation

3. ADDRESS OF OPERATOR

P.O. Box 1290, Farmington, New Mexico 87499

4. LOCATION OF WELL (Report location clearly and in accordance with any State requirements.)\*

At surface

305' FSL; 1572' FEL

At proposed prod. zone

Same as above

14. DISTANCE IN MILES AND DIRECTION FROM NEAREST TOWN OR POST OFFICE\*

1 mile South of Bloomfield, New Mexico

15. DISTANCE FROM PROPOSED\*

LOCATION TO NEAREST  
PROPERTY OR LEASE LINE, FT.  
(Also to nearest drlg. unit line, if any)

305'

305'

18. DISTANCE FROM PROPOSED LOCATION\*

TO NEAREST WELL, DRILLING, COMPLETED,  
OR APPLIED FOR, ON THIS LEASE, FT.

120'

16. NO. OF ACRES IN LEASE

1088.2

19. PROPOSED DEPTH

1500

17. NO. OF ACRES ASSIGNED  
TO THIS WELL

SE/4 157.72

20. ROTARY OR CABLE TOOLS

Rotary

21. ELEVATIONS (Show whether DF, RT, GR, etc.)

5524 GR (Ungraded)

DRILLING OPERATIONS AUTHORIZED ARE

SUBJECT TO COMPLIANCE WITH ATTACHED

"GENERAL REQUIREMENTS"

22. APPROX. DATE WORK WILL START\*

August 15, 1984

23.

"GENERAL REQUIREMENTS" AND CEMENTING PROGRAM. This action is subject to administrative

SIZE OF HOLE	SIZE OF CASING	WEIGHT PER FOOT	SETTING DEPTH	Notes
9-7/8	New 7-5/8" K55	26.40#	(+) 200'	88cu.ft. CL "B" 2% CaCl <sub>2</sub> circ.
6-3/4	New 2-3/8" J55	6.50#	(±) 1500'	See below circulated

We desire to drill this well as a slimhole well in an unorthodox location as shown above. After the production casing is run, it will be cemented as follows: Proceed with 20BBLs of mud flush followed by approx. 450 cu.ft. of 50-50 POZ with 2% Gel and 3675# of Gilsonite followed by 103 cu.ft. of CL "B" cement with 2% Gel to circulate to the surface. After W.O.C. and clean out the casing will be tested, perforated and fractured to stimulate production. Clean the well and nipple down the wellhead for a tubingless completion. Test the well. Connect to a gathering system.

This well is in an unorthodox location as the Fruitland zone is a channel sand and must be completed when it is present disregarding footage requirements.

RECEIVED

OCT 02 1984

OIL CON. DIV.  
DIST. 3

IN ABOVE SPACE DESCRIBE PROPOSED PROGRAM: If proposal is to deepen or plug back, give data on present productive zone and proposed new productive zone. If proposal is to drill or deepen directionally, give pertinent data on subsurface locations and measured and true vertical depths. Give blowout preventer program, if any.

24.

SIGNED

Rudy D. Motto

(This space for Federal or State office use)

TITLE Area Operation Manager

APPROVED

AS AMENDED

PERMIT NO.

APPROVAL DATE

APPROVED BY

CONDITIONS OF APPROVAL, IF ANY:

TITLE

SEP 28 1984

/s/ J. Stan McKee

ASST. AREA MANAGER  
FARMINGTON RESOURCE AREA

\*See Instructions On Reverse Side

**NEW MEXICO OIL CONSERVATION COMMISSION  
WELL LOCATION AND ACREAGE DEDICATION PLAT**

Form C-102  
Supersedes C-128  
Effective 1-1-83

All distances must be from the outer boundaries of the Section.

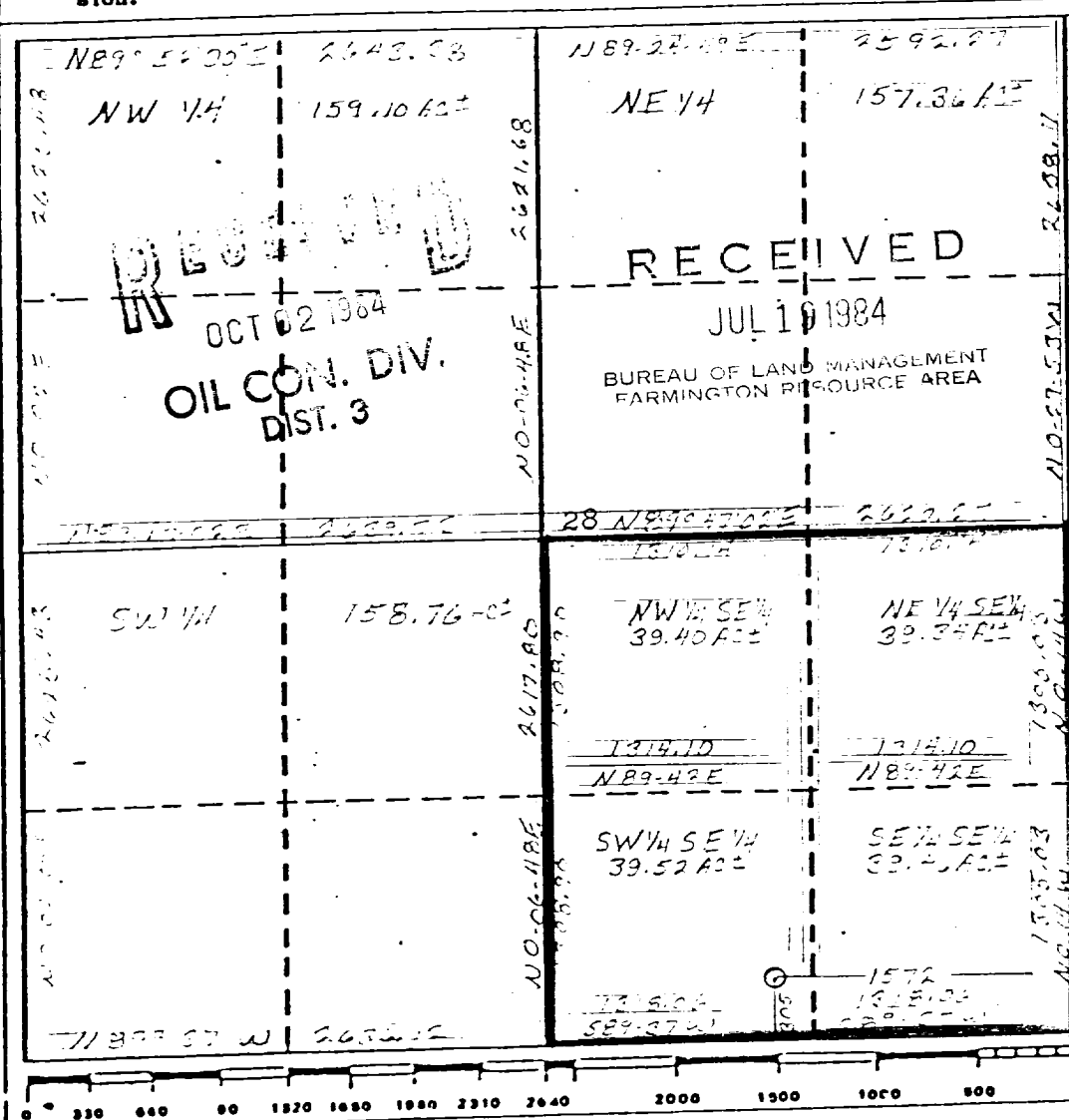
Operator <b>UNION TEXAS PETROLEUM CORPORATION</b>			Lease <b>MANGUM</b>		Well No. <b>9</b>
Unit Letter <b>0</b>	Section <b>28</b>	Township <b>29 NORTH</b>	Range <b>11 WEST</b>	County <b>SAN JUAN</b>	
Actual Footage Location of Well <div style="display: flex; justify-content: space-between;"> <span>305 feet from the <b>SOUTH</b> line and</span> <span>1572 feet from the <b>EAST</b> line</span> </div>					
Ground Level Elev. <b>5524</b>	Producing Formation <b>Fruitland</b>	Pool <b>Aztec EXT</b>	Dedicated Acreage: <b>SE/4 157.72/60 Acres</b>		

1. Outline the acreage dedicated to the subject well by colored pencil or hachure marks on the plat below.
2. If more than one lease is dedicated to the well, outline each and identify the ownership thereof (both as to working interest and royalty).
3. If more than one lease of different ownership is dedicated to the well, have the interests of all owners been consolidated by communitization, unitization, force-pooling, etc?

☒ Yes    ☐ No    If answer is "yes," type of consolidation to be communitized

If answer is "no," list the owners and tract descriptions which have actually been consolidated. (Use reverse side of this form if necessary.)

No allowable will be assigned to the well until all interests have been consolidated (by communitization, unitization, force-pooling, or otherwise) or until a non-standard unit, eliminating such interests, has been approved by the Commission.



**CERTIFICATION**

I hereby certify that the information contained herein is true and complete to the best of my knowledge and belief.

*Rudy D. Motto*  
Name  
**Rudy D. Motto**

Position  
**Area Operations Manager**

Company  
**Union Texas Petroleum Corp.**

Date  
**June 13, 1984**

I hereby certify that the well location shown on this plat was plotted from field notes of accurate surveys made by me or under my supervision and that the same are true and correct to the best of my knowledge and belief.

*Michael Daly*  
Date Surveyed  
**June 15, 1984**

Registered Professional Engineer  
and/or Land Surveyor

**Michael Daly**

Certificate No.

**5992**

MANGUM LEASE # 1088.20  
SEC. 28, T29N, R11W, N.M.P.M.  
SAN JUAN COUNTY, NEW MEXICO

MANGUM # 9

305' FSL & 1572' FEL

