

UNITED STATES
DEPARTMENT OF THE INTERIOR
GEOLOGICAL SURVEY

APPLICATION FOR PERMIT TO DRILL, DEEPEN, OR PLUG BACK

1a. TYPE OF WORK
DRILL ☒ DEEPEN ☐ PLUG BACK ☐

b. TYPE OF WELL
OIL WELL ☐ GAS WELL ☒ OTHER ☐ SINGLE ZONE ☒ MULTIPLE ZONE ☐

2. NAME OF OPERATOR
Energy Reserves Group, Inc.

3. ADDRESS OF OPERATOR
P. O. Box 3280; Casper, WY 82602

4. LOCATION OF WELL (Report location clearly and in accordance with any State requirements.)
At surface
1,530' FSL, 1,675' FWL
At proposed prod. zone
NE/SW

14. DISTANCE IN MILES AND DIRECTION FROM NEAREST TOWN OR POST OFFICE*
Approx. 4 miles east and 1.75 miles south of Farmington, NM

15. DISTANCE FROM PROPOSED*
LOCATION TO NEAREST
PROPERTY OR LEASE LINE, FT.
(Also to nearest drlg. unit line, if any) 965'

16. NO. OF ACRES IN LEASE
80
27,794.68

17. NO. OF ACRES ASSIGNED
TO THIS WELL
160

18. DISTANCE FROM PROPOSED LOCATION*
TO NEAREST WELL, DRILLING, COMPLETED,
OR APPLIED FOR, ON THIS LEASE, FT. 75'

19. PROPOSED DEPTH
1,075'

20. ROTARY OR CABLE TOOLS
Rotary

21. ELEVATIONS (Show whether DF, RT, or both)
5,352' GR ungraded

22. APPROX. DATE WORK WILL START*
Fall 1984 as approved

23. "GENERAL REQUIREMENTS"
PROPOSED CASING AND CEMENTING PROGRAM

SIZE OF HOLE	SIZE OF CASING	WEIGHT PER FOOT	SETTING DEPTH	
12-1/4"	8-5/8"	20#	160'	Cement to surface
6-1/4"	4-1/2"	10.5#	1,075'	Cement to surface

It is proposed to drill the above well as described on the attached ten point drilling plan and thirteen point surface use plan.

RECEIVED
NOV 26 1984
OIL CON. DIV.
DIST. 3

IN ABOVE SPACE DESCRIBE PROPOSED PROGRAM: If proposal is to deepen or plug back, give data on present productive zone and proposed new productive zone. If proposal is to drill or deepen directionally, give pertinent data on subsurface locations and measured and true vertical depths. Give blowout preventer program, if any.

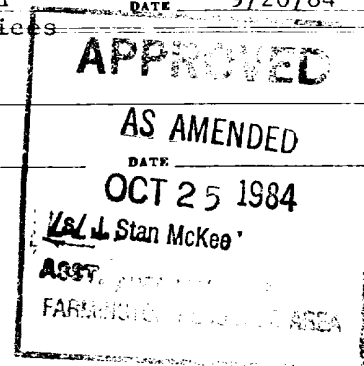
24. SIGNED William J. [Signature] TITLE Administrator, Field Services DATE 9/20/84

(This space for Federal or State office use)

PERMIT NO. _____ APPROVAL DATE _____

APPROVED BY _____ TITLE _____

CONDITIONS OF APPROVAL, IF ANY:



NMOCG

OIL CONSERVATION DIVISION

STATE OF NEW MEXICO

P. O. BOX 2048

Form C-107

ENERGY AND MINERALS DEPARTMENT

SANTA FE, NEW MEXICO 87501

Revised 10-1-

All distances must be from the outer boundaries of the Section.

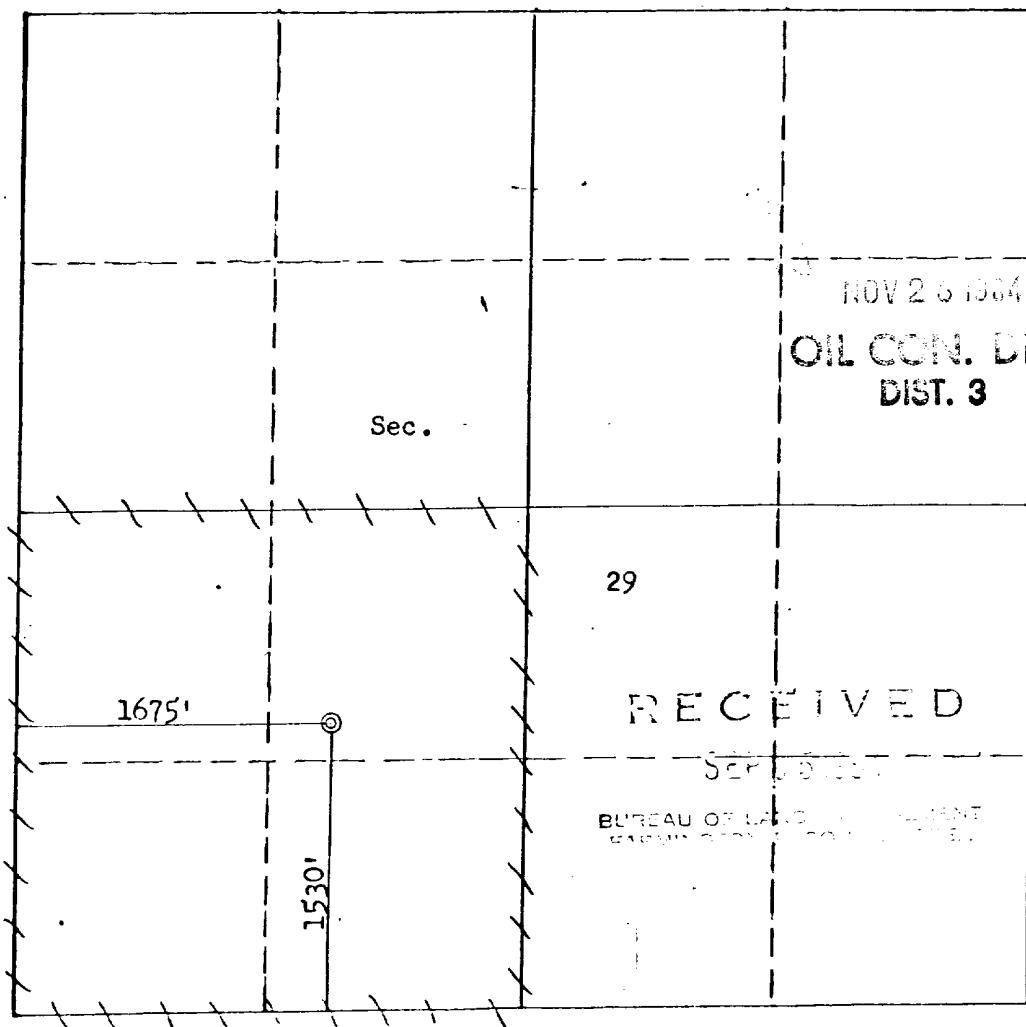
Operator ENERGY RESERVES GROUP			Lease GALLEGOS CANYON UNIT		Well No. 344
Unit Letter K	Section 29	Township 29N	Range 12W	County San Juan	
Actual Footage Location of Well: 1530 feet from the South line and 1675 feet from the West line					
Ground Level Elev. 5352	Producing Formation Fruitland	Pool North Pinion Fruitland		Dedicated Acreage 160 Acres	

1. Outline the acreage dedicated to the subject well by colored pencil or hachure marks on the plat below.
2. If more than one lease is dedicated to the well, outline each and identify the ownership thereof (both as to working interest and royalty).
3. If more than one lease of different ownership is dedicated to the well, have the interests of all owners been consolidated by communitization, unitization, force-pooling, etc?

☒ Yes ☐ No If answer is "yes," type of consolidation Unitization

If answer is "no," list the owners and tract descriptions which have actually been consolidated. (Use reverse side of this form if necessary.)

No allowable will be assigned to the well until all interests have been consolidated (by communitization, unitization, forced-pooling, or otherwise) or until a non-standard unit, eliminating such interests, has been approved by the Commission.



Scale: 1"=1000'

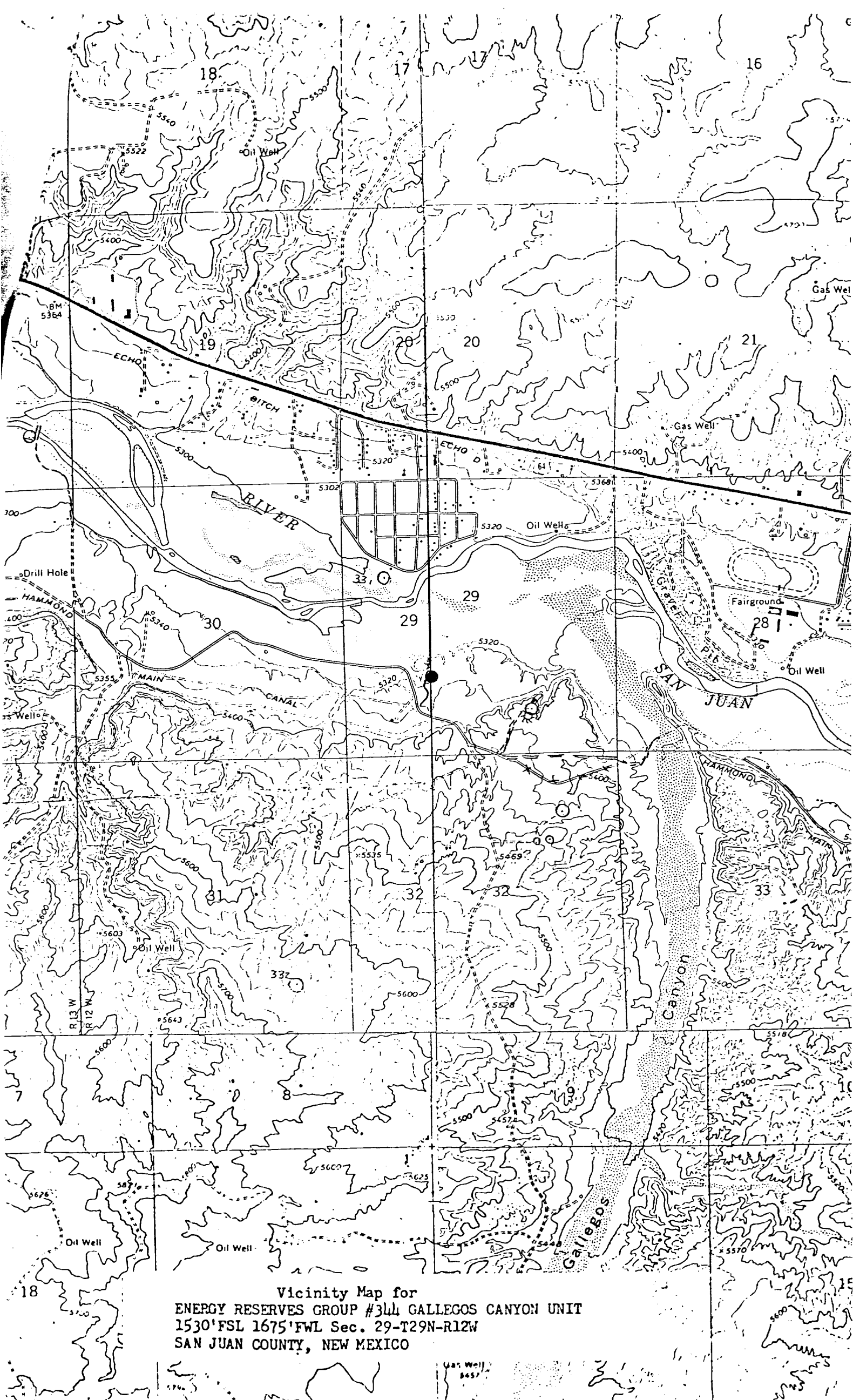
CERTIFICATION

I hereby certify that the information contained herein is true and complete to the best of my knowledge and belief.

Name William J. Fiant
 Position Administrator, Field Services
 Company Energy Reserves Group, Inc.
 Date September 20, 1984

I hereby certify that the well location shown on this plat was plotted from field notes of actual surveys made by me or under my supervision, and that the same is true and correct to the best of my knowledge and belief.

Date Surveyed September 12, 1984
 Registered Professional Engineer and Land Surveyor
Fred B. Kerr Jr.
 Certificate No. 4600
 3950



Vicinity Map for
ENERGY RESERVES GROUP #344 GALLEGOS CANYON UNIT
1530' FSL 1675' FWL Sec. 29-T29N-R12W
SAN JUAN COUNTY, NEW MEXICO