

UNITED STATES
DEPARTMENT OF THE INTERIOR
BUREAU OF LAND MANAGEMENT

APPLICATION FOR PERMIT TO DRILL, DEEPEN, OR PLUG BACK

1a. TYPE OF WORK

DRILL ☒

DEEPEN ☐

PLUG BACK ☐

b. TYPE OF WELL

OIL
WELL ☐

GAS
WELL ☒

OTHER

SINGLE
ZONE ☒

MULTIPLE
ZONE ☐

2. NAME OF OPERATOR

Union Texas Petroleum Corporation

3. ADDRESS OF OPERATOR

P.O. Box 1290, Farmington, New Mexico 87499

4. LOCATION OF WELL (Report location clearly and in accordance with any State requirements.)

At surface

840' FSL; 1450' FEL

At proposed prod. zone Same as above

14. DISTANCE IN MILES AND DIRECTION FROM NEAREST TOWN OR POST OFFICE

8 miles Southeast of Bloomfield, New Mexico

15. DISTANCE FROM PROPOSED*

LOCATION TO NEAREST
PROPERTY OR LEASE LINE, FT.
(Also to nearest drlg. unit line, if any)

840'

840'

16. NO. OF ACRES IN LEASE

2284.3

17. NO. OF ACRES ASSIGNED
TO THIS WELL

320.00

18. DISTANCE FROM PROPOSED LOCATION*

TO NEAREST WELL, DRILLING, COMPLETED,
OR APPLIED FOR, ON THIS LEASE, FT.

410'

19. PROPOSED DEPTH

4785'

20. ROTARY OR CABLE TOOLS

Rotary

21. ELEVATIONS (Show whether DF, RT, GR, etc.)

5788 GR (Ungraded)

SUBJECT TO BE REVIEWED WITH ATTACHED
"GENERAL REQUIREMENTS"

22. APPROX. DATE WORK WILL START*

November 20, 1984

23. PROPOSED CASING AND CEMENTING PROGRAM

This action is subject to review
appeal pursuant to 30 U.S.C. 1701
QUANTITY OF CEMENT

SIZE OF HOLE	SIZE OF CASING	WEIGHT PER FOOT	SETTING DEPTH	QUANTITY OF CEMENT
12 1/4	New 8-5/8"	24.0 #	(+) 300'	248 cu.ft. CL "B" 2% CaCl ₂ circ.
7-7/8	New 4-1/2"	10.5 #	(+) 4785'	1635 cu.ft. (see below)

Union Texas Petroleum Corporation intends to drill a 12-1/4" hole to 300' KB and set 300' of 8-5/8" 24#, K-55, ST&C casing cementing to surface with 240 cu.ft. CL "B" cement containing 2% CaCl₂. W.O.C. 12 hours. Nipple up BOP and choke manifold. Test casing, BOP and choke manifold to 1000 psi prior to drilling out of surface casing. Drill a 7-7/8" hole to total depth using a LSND mud. Log the well as follows: IES-SP-GR, TD to surface casing. Neutron-Density-GR-CAL, TD-1000'. If logs indicate commercial potential, 4-1/2" casing will run to TD and cemented in with a two stage job. 1st stage: 866 cu.ft. CL "B" 50/50 POZ with 2% gel, 6-1/4# gilsonite/sk. 2nd stage: D.V. took set at 2250 +. Lead in with 651 cu.ft. 35/65 (POZ CL "B") with 6% gel, 10# gilsonite/sack, 2% CaCl₂, tail in with 188 cu.ft. CL "B" with 2% CaCl₂.

RECEIVED

NOV 26 1984

OIL CON. DIV.

IN ABOVE SPACE DESCRIBE PROPOSED PROGRAM: If proposal is to deepen or plug back, give data on present productive zone and proposed new productive zone. If proposal is to drill or deepen directionally, give pertinent data on subsurface locations and measured and true vertical depths. Give blowout preventer program, if any.

24.

SIGNED

Robert C. Frank

Regulatory & Environmental Analyst DATE: October 24, 1984

R. C. Frank

(This space for Federal or State office use)

PERMIT NO.

APPROVAL DATE

APPROVED BY

TITLE

DATE

CONDITIONS OF APPROVAL, IF ANY:

See agency

ok

NOV 26 1984

*See Instructions On Reverse Side

WELL LOCATION AND ACREAGE DEDICATION PLAT

Effective 1-1-83

All distances must be from the outer boundaries of the Section.

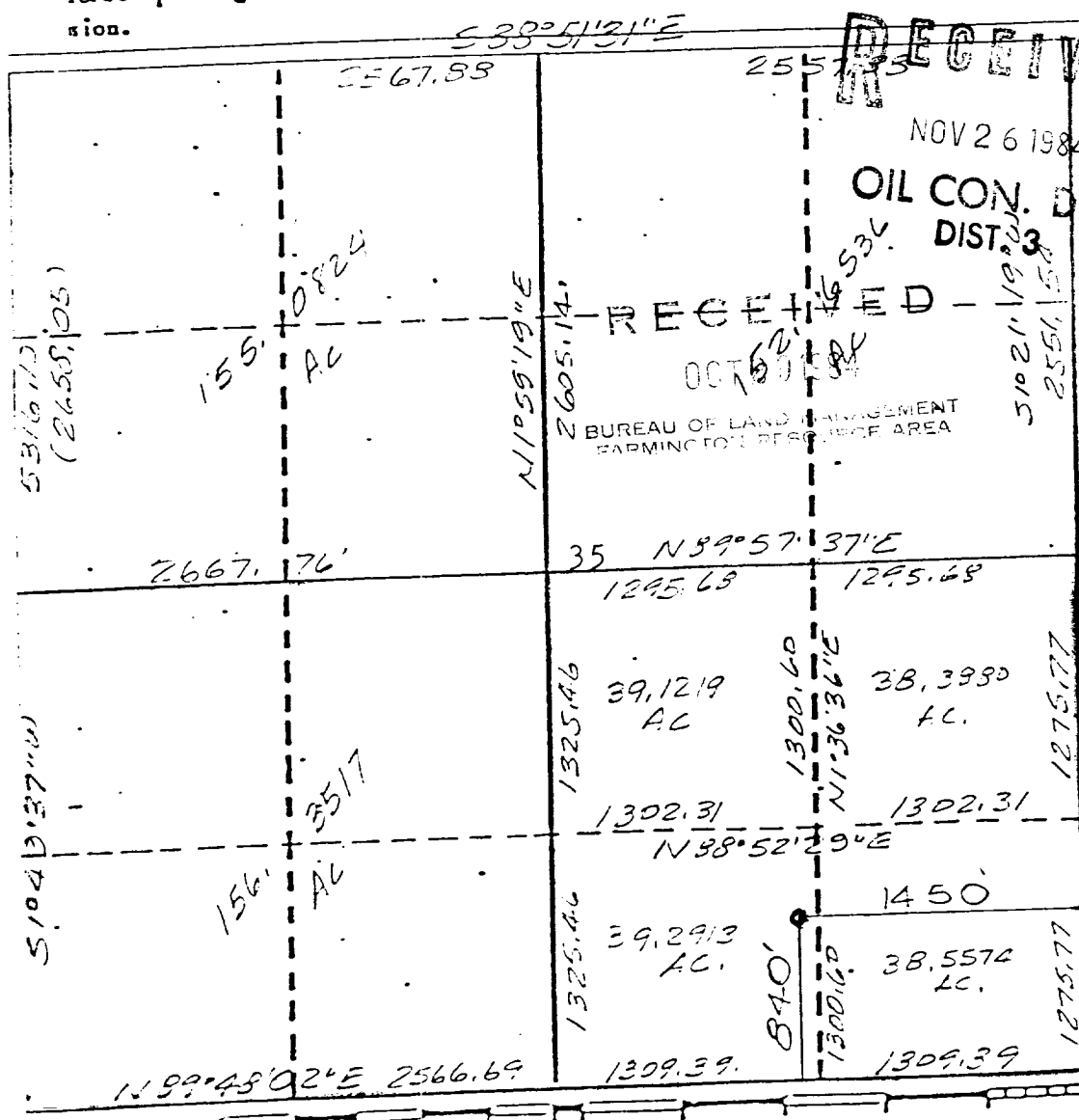
Operator UNION TEXAS PETROLEUM CORPORATION		Lease ZACHRY		Well No. 43
Well Letter 0	Section 35	Township 29 NORTH	Range 10 WEST	County SAN JUAN
Actual Footage Location of Wells				
840 feet from the SOUTH line and 1450 feet from the EAST line	Dedicated Acreage S/2 311.71 Acres			
Ground Level Elev. 5788	Producing Formation Mesaverde	Pool Blanco		

1. Outline the acreage dedicated to the subject well by colored pencil or hatchure marks on the plat below.
2. If more than one lease is dedicated to the well, outline each and identify the ownership thereof (both as to working interest and royalty).
3. If more than one lease of different ownership is dedicated to the well, have the interests of all owners been consolidated by communitization, unitization, force-pooling, etc?

☐ Yes ☒ No If answer is "yes," type of consolidation _____

If answer is "no," list the owners and tract descriptions which have actually been consolidated. (Use reverse side of this form if necessary.) Union Texas Exploration

No allowable will be assigned to the well until all interests have been consolidated (by communitization, unitization, forced-pooling, or otherwise) or until a non-standard unit, eliminating such interests, has been approved by the Commission.



CERTIFICATION

I hereby certify that the information contained herein is true and complete to the best of my knowledge and belief.

Name
Rudy D. Motto

Position
Area Operations Manager

Company
Union Texas Petroleum Corp

Date
October 24, 1984

I hereby certify that the well location shown on this plat was plotted from field notes of actual surveys made by me or under my supervision, and that the same is true and correct to the best of my knowledge and belief.

Signature
George R. Tompkins

Date
AUGUST 30, 1984

Registered Professional Engineer
and/or Land Surveyor

GEORGE R. TOMPKINS

Certificate No.
7259

EXHIBIT A
LEASE; SF 080724-A

ZACHRY # 43

840' FSL & 1450' FEL
SEC. 35, T29N, R10W
SAN JUAN COUNTY, N.M.

NO NEW ROAD NEEDED.

