

UNITED STATES
DEPARTMENT OF THE INTERIOR
BUREAU OF LAND MANAGEMENT

SUBMIT IN TR. DATE
(Place instructions on
reverse side)

Form approved.
Budget Bureau No. 1004-0136
Expires August 31, 1985

APR 24 1985

APPLICATION FOR PERMIT TO DRILL, DEEPEN, OR PLUG BACK

1a. TYPE OF WORK

DRILL ☒

DEEPEN ☐

PLUG BACK ☐

b. TYPE OF WELL

OIL WELL ☒

GAS WELL ☐

OTHER

SINGLE ZONE ☒

MULTIPLE ZONE ☐

2. NAME OF OPERATOR

Amoco Production Company

3. ADDRESS OF OPERATOR

501 Airport Drive, Farmington, NM 87401

4. LOCATION OF WELL (Report location clearly and in accordance with any State requirements.)

At surface

1280' FSL x 670' FWL

At proposed prod. zone

14. DISTANCE IN MILES AND DIRECTION FROM NEAREST TOWN OR POST OFFICE*

9 miles southeast of Shiprock, New Mexico

15. DISTANCE FROM PROPOSED*

LOCATION TO NEAREST
PROPERTY OR LEASE LINE, FT.
(Also to nearest drlg. unit line, if any)

670'

16. NO. OF ACRES IN LEASE

4,800

17. NO. OF ACRES ASSIGNED
TO THIS WELL

16040

18. DISTANCE FROM PROPOSED LOCATION*
TO NEAREST WELL, DRILLING, COMPLETED,
OR APPLIED FOR, ON THIS LEASE, FT.

1/2 mi. E.

19. PROPOSED DEPTH

6,898'

20. ROTARY OR CABLE TOOLS

Rotary

21. ELEVATIONS (Show whether DF, RT, GR, etc.)

5009' GR

DRILLING OPERATIONS AUTHORIZED ARE
SUBJECT TO COMPLIANCE WITH ATTACHED
"GENERAL REQUIREMENTS".

22. APPROX. DATE WORK WILL START*

As soon as permitted

23. PROPOSED CASING AND CEMENTING PROGRAM

This action is subject to administrative
appeal pursuant to 30 CFR 290.

SIZE OF HOLE	SIZE OF CASING	WEIGHT PER FOOT	SETTING DEPTH	QUANTITY OF CEMENT
17-1/2"	13-3/8"	48#, H40	300'	520 ft ³ Class B
12-1/4"	9-5/8"	36#, K55	2170'	1830 ft ³ Class B Pozmix
8-3/4"	7"	26#, K55	6898'	1337 ft ³ Class B Pozmix 77 ft ³ Class B

This string may be two staged but
the cement types and volume will
remain the same.

Amoco proposes to drill the above well to further develop the Hogback reservoir. The well will be drilled to the surface casing point using native mud. The well will then be drilled to TD with a low solids nondispersed mud system. Completion design will be based on open hole logs. Copy of all logs will be filed upon completion. Amoco's standard blowout prevention will be employed; see attached drawing for blowout preventer design. Upon completion the well site will be cleaned and the reserve pit filled and leveled. The gas from this well is undedicated at this time.

IN ABOVE SPACE DESCRIBE PROPOSED PROGRAM: If proposal is to deepen or plug back, give data on present productive zone and proposed new productive zone. If proposal is to drill or deepen directionally, give pertinent data on subsurface locations and measured and true vertical depths. Give blowout preventer program, if any.

24.

SIGNED

H. J. Holcomb

TITLE District Manager

DATE 3/14/85

(This space for Federal or State office use)

PERMIT NO.

APPROVAL DATE

APPROVED
AS AMENDED

APPROVED BY

TITLE

DATE APR 22 1985

CONDITIONS OF APPROVAL, IF ANY:

NO. 104 for NISLOR
Dir. Drill

NMOCC

M. MILLENBACH
AREA MANAGER

*See Instructions On Reverse Side

All distances must be from the outer boundaries of the Section.

Operator AMOCO PRODUCTION COMPANY			Lease USG SECTION 18		Well No. 42
Unit Letter M	Section 18	Township 29N	Range 16W	County San Juan	
Actual Footage Location of Well: 1280 feet from the South line and 670 feet from the West line					
Ground Level Elev. 5009	Producing Formation Hogback Penn		Pool Hogback	Dedicated Acreage: 40 Acres	

1. Outline the acreage dedicated to the subject well by colored pencil or hatchure marks on the plat below.
2. If more than one lease is dedicated to the well, outline each and identify the ownership thereof (both as to working interest and royalty).
3. If more than one lease of different ownership is dedicated to the well, have the interests of all owners been consolidated by communitization, unitization, force-pooling, etc?

☐ Yes ☒ No If answer is "yes," type of consolidation _____

If answer is "no," list the owners and tract descriptions which have actually been consolidated. (Use reverse side of this form if necessary.) _____

No allowable will be assigned to the well until all interests have been consolidated (by communitization, unitization, forced-pooling, or otherwise) or until a non-standard unit, eliminating such interests, has been approved by the Commission.

RECEIVED

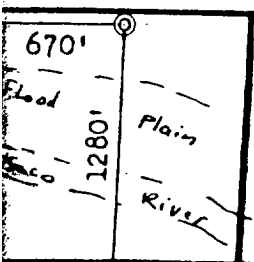
APR 24 1985

CON. DIV.
3
Sec.

RECEIVED
SEP 0 1985

BUREAU OF LAND MANAGEMENT
SANTA FE, NEW MEXICO

18



CERTIFICATION

I hereby certify that the information contained herein is true and complete to the best of my knowledge and belief.

Original Signed By

B. D. Shaw

Name

B. D. Shaw

Position

Administrative Supervisor

Company

Amoco Production Company

Date

8/24/84

I hereby certify that the well location shown on this plat was plotted from field notes of actual surveys made by me or under my supervision, and that the same is true and correct to the best of my knowledge and belief.

Date Surveyed

August 14, 1984

Registered Professional Engineer
and Land Surveyor

Fred. S. Kerr Jr.

Certificate No. 42200

Scale: 1"=1000'

