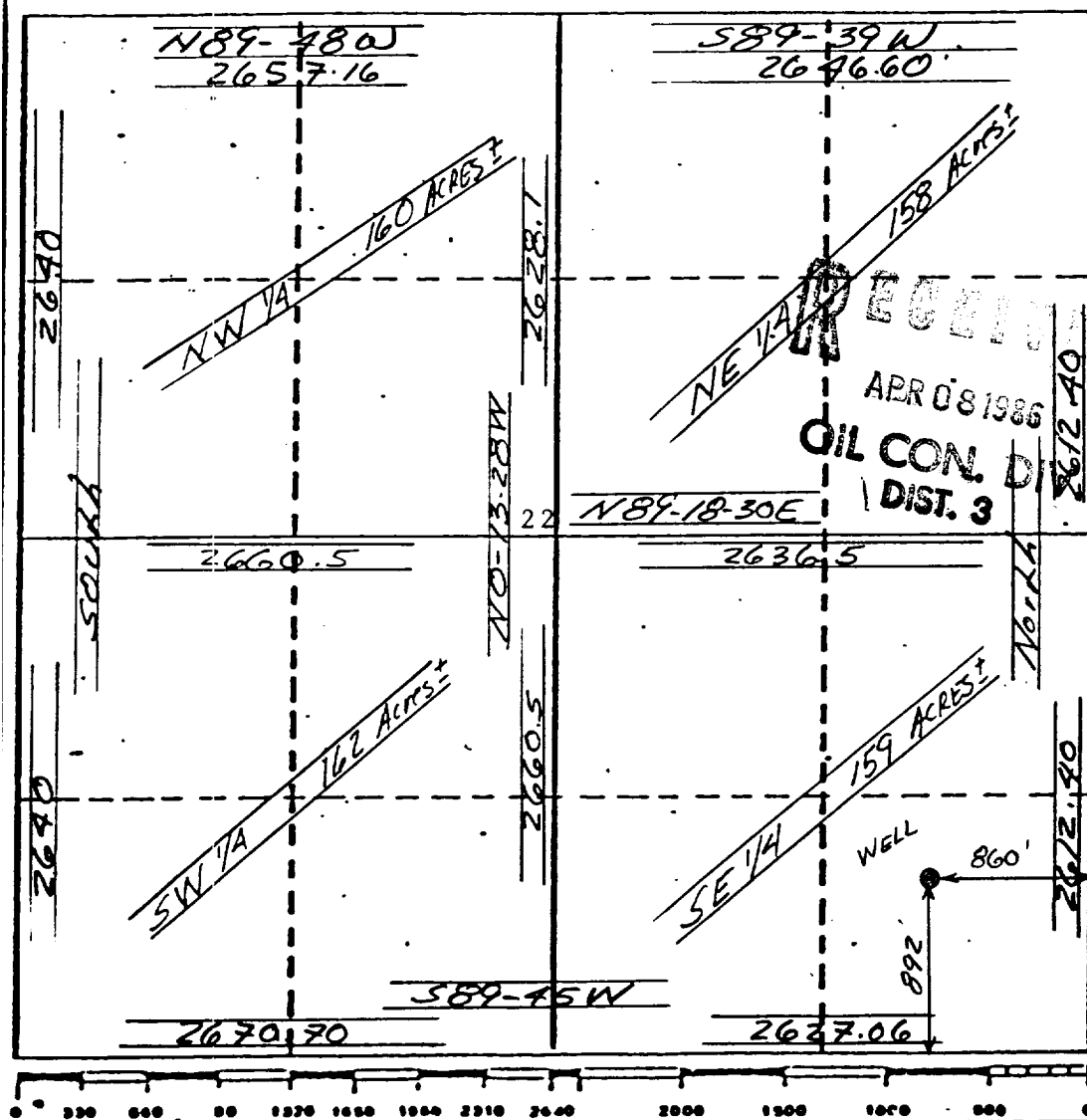


Form C-102
Supersedes C-120
Effective 1-1-63

Operator MANANA GAS INC.		Lease NANCY HARTMAN		Well No. 2
Unit Letter P	Section 22	Township 29 NORTH	Range 11 WEST	County SAN JUAN
Actual Footage Location of Wells				
892 feet from the SOUTH line and		860 feet from the EAST line		
Ground Level Elev. 5433	Producing Formation Chacra	Pool Bloomfield Chacra		Dedicated Acreage 160 159 Acres

- ☐ Yes ☐ No If answer is "yes," type of consolidation _____

No allowable will be assigned to the well until all interests have been consolidated (by communitization, unitization, forced-pooling, or otherwise) or until a non-standard unit, eliminating such interests, has been approved by the Commission.



I hereby certify that the information contained herein is true and complete to the best of my knowledge and belief.

Ed Hartman

Name _____

Ed Hartman

Position

President

Company

Manana Gas, Inc.

Date _____

4/8/86

I hereby certify that the well location shown on this plat was plotted from field notes of official survey made by me or under my supervision and that the same is true and correct to the best of my knowledge and belief.

Date Surveyed _____

March 12, 1986

**Registered Professional Engineer
and/or Land Surveyor**

George R. Tompkins

Certificate No.

• 7259