

NEW MEXICO OIL CODE REVISION COMMISSION  
WELL LOCATION AND ACREAGE DEDICATION PLAT

Form C-102  
Supersedes C-128  
Effective 1-1-83

All distances must be from the outer boundaries of the Section.

Operator MANANA GAS INC.		Lease HARTMAN		Well No. 1E	
Unit Letter A	Section 22	Township 29. NORTH	Range 11 WEST	County SAN JUAN	
Actual Footage Location of Well 1270 feet from the NORTH line and 790 feet from the EAST line					
Ground Level Elev. 5485	Producing Formation Bakofa	Pool Basin	Dedicated Acreage 320 Acres		

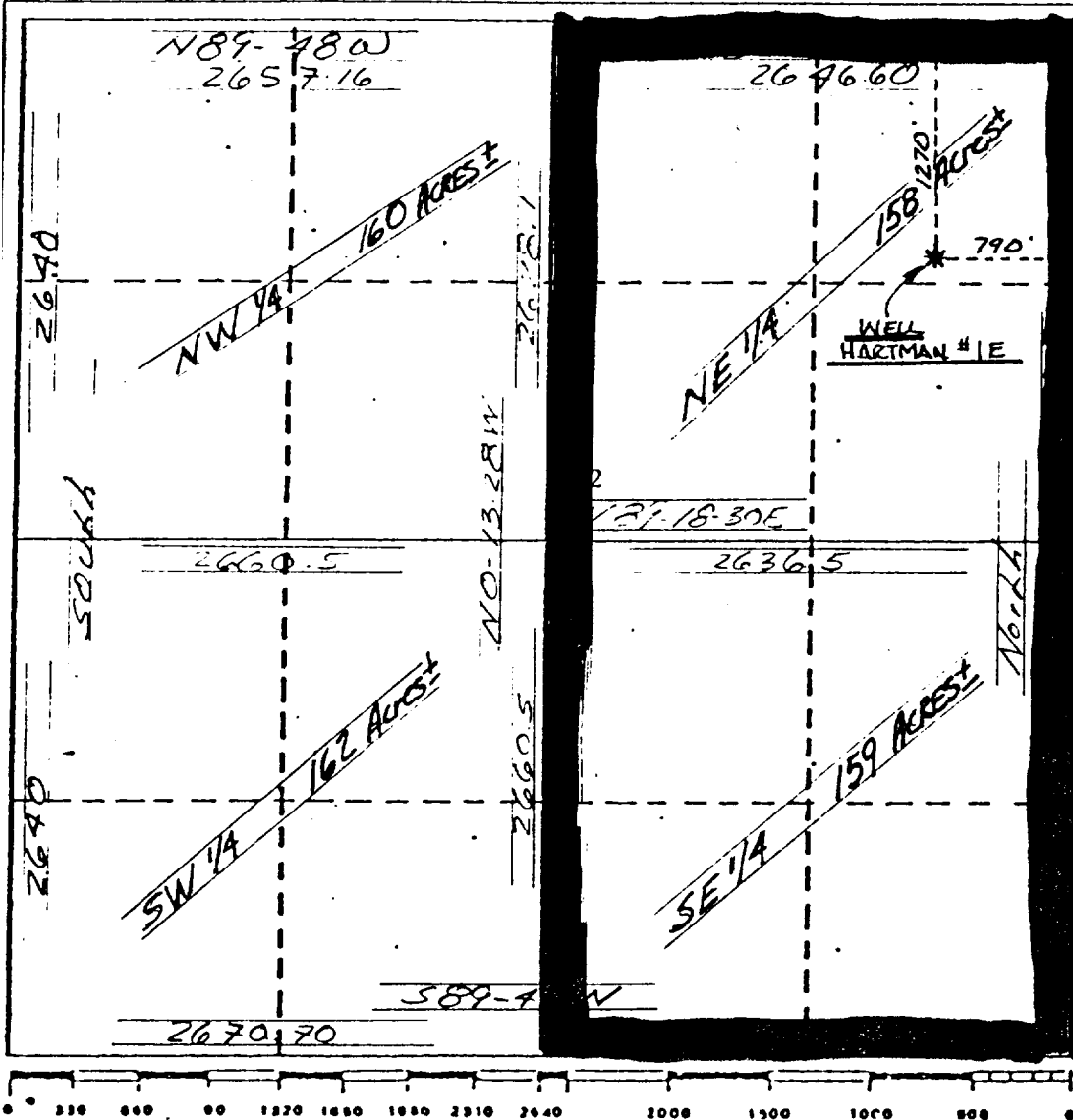
1. Outline the acreage dedicated to the subject well by colored pencil or hachure marks on the plat below.
2. If more than one lease is dedicated to the well, outline each and identify the ownership thereof (both as to working interest and royalty).
3. If more than one lease of different ownership is dedicated to the well, have the interests of all owners been consolidated by communitization, unitization, force-pooling, etc?

☐ Yes ☐ No If answer is "yes," type of consolidation \_\_\_\_\_

If answer is "no," list the owners and tract descriptions which have actually been consolidated. (Use reverse side of this form if necessary.) \_\_\_\_\_

No allowable will be assigned to the well until all interests have been consolidated (by communitization, unitization, forced-pooling, or otherwise) or until a non-standard unit, eliminating such interests, has been approved by the Commission.

RECEIVED  
JUL 01 1986  
OIL CON. DIV.  
DIST. 3



CERTIFICATION

I hereby certify that the information contained herein is true and complete to the best of my knowledge and belief.

Name: Ed Hartman  
Position: PRES.  
Company: MANANA GAS INC.  
Date: 4/13/86

I hereby certify that the well location shown on this plat was plotted from field notes of actual surveys made by me or under my supervision and that the same is true and correct to the best of my knowledge and belief.

Date Surveyed: June 1986  
Registered Professional Engineer and/or Land Surveyor

George R. Tompkins

Certificate No. 7259