

UNITED STATES
DEPARTMENT OF THE INTERIOR
BUREAU OF LAND MANAGEMENT

APPLICATION FOR PERMIT TO DRILL, DEEPEN, OR PLUG BACK

1a. TYPE OF WORK
DRILL ☒ DEEPEN ☐ PLUG BACK ☐
b. TYPE OF WELL
OIL WELL ☐ GAS WELL ☒ OTHER ☐ SINGLE ZONE ☒ MULTIPLE ZONE ☐
2. NAME OF OPERATOR
Union Texas Petroleum
3. ADDRESS OF OPERATOR
375 U.S. Highway 64, Farmington New Mexico 87401
4. LOCATION OF WELL (Report location clearly and in accordance with any State requirements.)*
At surface 1055' FNL & 1015' FWL
At proposed prod. zone
14. DISTANCE IN MILES AND DIRECTION FROM NEAREST TOWN OR POST OFFICE*
2.5 miles SW of Blanco, New Mexico
15. DISTANCE FROM PROPOSED* LOCATION TO NEAREST PROPERTY OR LEASE LINE, FT. (Also to nearest drlg. unit line, if any)
1015 from lease
1015 from DU
16. NO. OF ACRES IN LEASE
2284.30
17. NO. OF ACRES ASSIGNED TO THIS WELL
101.85 NW/4 160
18. DISTANCE FROM PROPOSED LOCATION* TO NEAREST WELL, DRILLING, COMPLETED, OR APPLIED FOR, ON THIS LEASE, FT.
779'
19. PROPOSED DEPTH
3150'
20. ROTARY OR CABLE TOOLS
Rotary

5. LEASE DESIGNATION AND SERIAL NO.
SF-080724-A
6. IF INDIAN, ALLOTTEE OR TRIBE NAME
N/A
7. UNIT AGREEMENT NAME
N/A
8. FARM OR LEASE NAME
ZACHRY
9. WELL NO.
59
10. FIELD AND POOL, OR WILDCAT
Otero Chacra
11. SEC., T., R., M., OR BLK. AND SURVEY OR AREA
D Sec 33, T29N, R10W
12. COUNTY OR PARISH
San Juan
13. STATE
NM

21. ELEVATIONS (Show whether DF, RT, GR, etc.)
5641 GL
DRILLING OPERATIONS AUTHORIZED ARE
SUBJECT TO COMPLIANCE WITH ATTACHED
"GENERAL REQUIREMENTS"
22. APPROX. DATE WORK WILL START*
November 20, 1986
This action is subject to technical and procedural review pursuant to 43 CFR 3165.4 and appeal pursuant to 43 CFR 3165.4.

SIZE OF HOLE	SIZE OF CASING	WEIGHT PER FOOT	SETTING DEPTH	QUANTITY OF CEMENT
9-7/8"	7-5/8"	26.40	300'	120 sxs. (142 cu.ft.)
6-3/4"	2-7/8"	6.50	3150'	590 sxs. (926 cu.ft.)

Union Texas Petroleum wishes to advise that we intend to drill a 9-7/8" hole to 300'+. Set 7-5/8", 26.4#, K-55 ST&C to 300'+ and cement to surface w/120 sxs Class "B" w/2% CaCl2 and 1/4# flocele/sk. Wait on cement for 12 hours. Nipple up and test BOP. Drill 6-3/4" hole out of surface to 3150'. Log well. If commercial production is indicated, set 2-7/8", 6.5#, J-55 casing to 3150', cementing to surface with 590 sxs (926 cu.ft.) 50/50 POZ containing 4% gel and 6-1/4# gilsonite/sk. Perforate pay section in Chacra. Fracture stimulate. Install cathodic protection.

RECEIVED

NOV 05 1986

BUREAU OF LAND MANAGEMENT
FARMINGTON RESOURCE AREA

IN ABOVE SPACE DESCRIBE PROPOSED PROGRAM: If proposal is to deepen or plug back, give data on present productive zone and proposed new productive zone. If proposal is to drill or deepen directionally, give pertinent data on subsurface locations and measured and true vertical depths. Give blowout preventer program, if any.

24. SIGNED Robert C. Frank TITLE Permit Coordinator DATE November 3, 1986

(This space for Federal or State office use)

AS AMENDED

PERMIT NO. _____ APPROVAL DATE NOV 18 1986

APPROVED BY _____ TITLE _____ DATE /s/ J. Stan McKee

CONDITIONS OF APPROVAL, IF ANY:

FOR AREA MANAGER

NMOCC

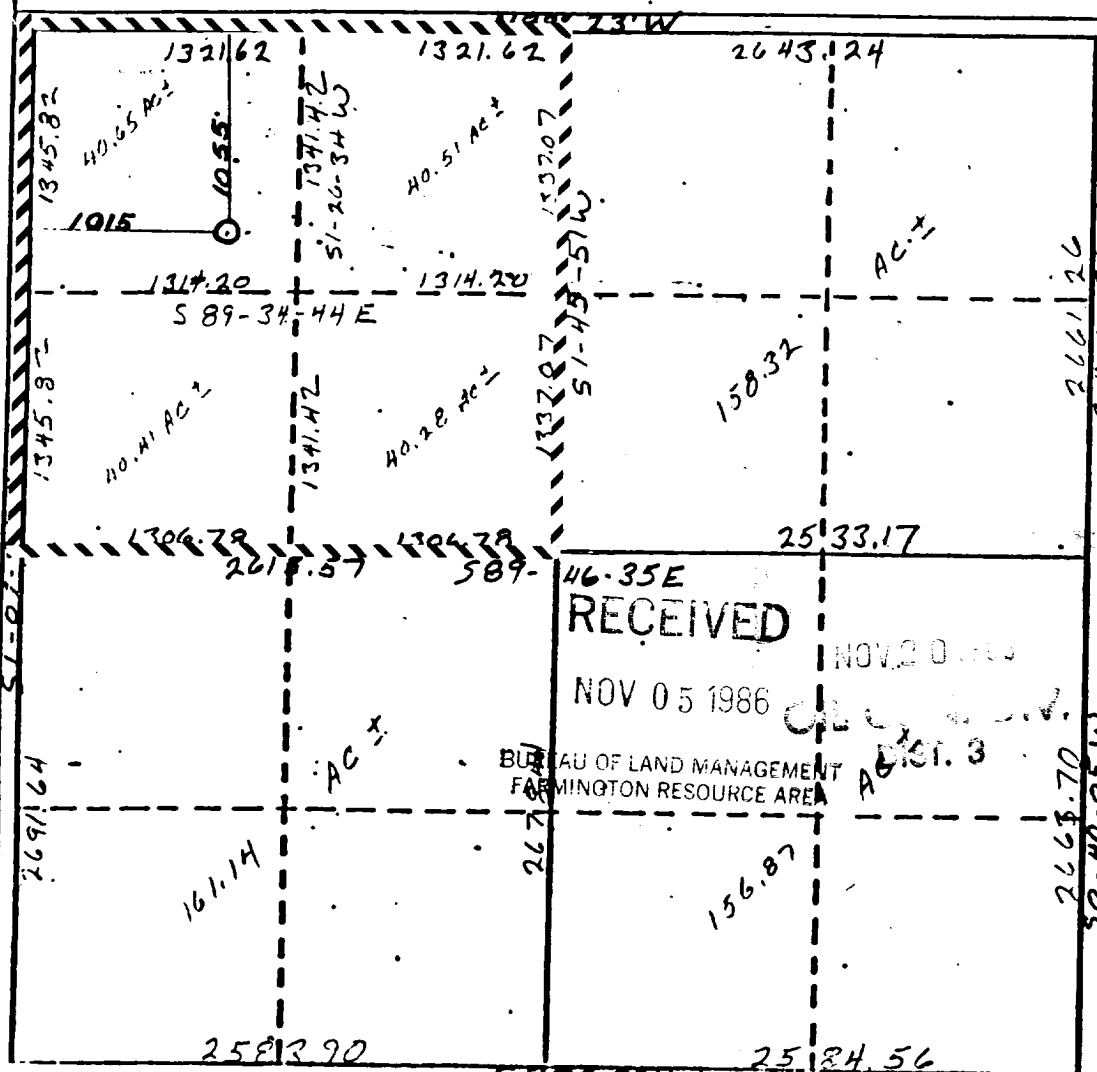
*See Instructions On Reverse Side

Form C-103
Supersedes C-1
Effective 1-1-65

Operator UNION TEXAS PETROLEUM CORP.		Lesse ZACHRY		Well No. 59
Unit Letter D	Section 33	Township 29 NORTH	Range 10 WEST	County SAN JUAN COUNTY
Actual Footage Location of Wells 1055 feet from the NORTH line and 1015 feet from the WEST line				
Ground Level Elev. 5641	Producing Formation Chacra	Pool Otero	Dedicated Acres 161.85 / 60	

- ☐ Yes ☐ No If answer is "yes," type of consolidation

No allowable will be assigned to the well until all interests have been consolidated (by communization, unitization, forced-pooling, or otherwise) or until a non-standard unit, eliminating such interests, has been approved by the Commission.



I hereby certify that the information contained herein is true and complete to the best of my knowledge and belief.

Robert C. Frank

Name
• Robert C. Frank

Position
Permit Coordinator

Company _____

Union Texas Petroleum

Date November 4, 1986

I hereby certify that the information shown on this report was obtained from field notes of actual survey made by me or under my supervision and that the same is true and correct to the best of my knowledge and belief.

Cecil B. Tullie.

Date Surveyed _____

October 10, 1986

Registered Professional Engineer
and/or Land Surveyor

Cecil B. Tullis

Certificate No.

9672 Exhibit I

