

UNITED STATES  
DEPARTMENT OF THE INTERIOR  
BUREAU OF LAND MANAGEMENT

APPLICATION FOR PERMIT TO DRILL, DEEPEN, OR PLUG BACK

1a. TYPE OF WORK  
DRILL ☒ DEEPEN ☐ PLUG BACK ☐

b. TYPE OF WELL  
OIL WELL ☐ GAS WELL ☒ OTHER ☐  
SINGLE ZONE ☒ MULTIPLE ZONE ☐

2. NAME OF OPERATOR  
Union Texas Petroleum

3. ADDRESS OF OPERATOR  
375 U.S. Highway 64, Farmington New Mexico 87401

4. LOCATION OF WELL (Report location clearly and in accordance with any State requirements.)  
At surface 960' FNL & 790' FWL  
At proposed prod. zone

14. DISTANCE IN MILES AND DIRECTION FROM NEAREST TOWN OR POST OFFICE\*  
2.5 miles SW of Blanco, New Mexico

15. DISTANCE FROM PROPOSED\* LOCATION TO NEAREST PROPERTY OR LEASE LINE, FT.  
(Also to nearest drlg. unit line, if any)  
547 from Tease  
790 from DU

16. NO. OF ACRES IN LEASE  
2284.30

18. DISTANCE FROM PROPOSED LOCATION\* TO NEAREST WELL, DRILLING, COMPLETED, OR APPLIED FOR, ON THIS LEASE, FT.  
125'

19. PROPOSED DEPTH  
3125'

17. NO. OF ACRES ASSIGNED TO THIS WELL  
160  
162.85 NW/4

20. ROTARY OR CABLE TOOLS  
Rotary

21. ELEVATIONS (Show whether DF, RT, GR, etc.)  
5615' G.L.

22. APPROX. DATE WORK WILL START\*  
November 20, 1986

This action is subject to technical and procedural review pursuant to 43 CFR 3165.3 and appeal pursuant to 43 CFR 3165.4.

SIZE OF HOLE	SIZE OF CASING	WEIGHT PER FOOT	SETTING DEPTH	QUANTITY OF CEMENT
9-7/8"	7-5/8"	26.40	300'	120 sxs. (142 cu.ft.)
6-3/4"	2-7/8"	6.50	3125'	590 sxs. (926 cu.ft.)

Union Texas Petroleum wishes to advise that we intend to drill a 9-7/8" hole to 300'+. Set 7-5/8", 26.4#, K-55 ST&C to 300'+ and cement to surface w/120 sxs Class "B" w/2% CaCl2 and 1/4# flocele/sk. Wait on cement for 12 hours. Nipple up and test BOP. Drill 6-3/4" hole out of surface to 3125'. Log well. If commercial production is indicated, set 2-7/8", 6.5#, J-55 casing to 3125', cementing to surface with 590 sxs (926 cu.ft.) 50/50 POZ containing 4% gel and 6-1/4# gilsonite/sk. Perforate pay section in Chacra. Fracture stimulate. Install cathodic protection.

RECEIVED

NOV 05 1986

BUREAU OF LAND MANAGEMENT  
FARMINGTON RESOURCE AREA

IN ABOVE SPACE DESCRIBE PROPOSED PROGRAM: If proposal is to deepen or plug back, give data on present productive zone and proposed new productive zone. If proposal is to drill or deepen directionally, give pertinent data on subsurface locations and measured and true vertical depths. Give blowout preventer program, if any.

24. SIGNED Robert C. Frank TITLE Permit Coordinator DATE November 3, 1986

(This space for Federal or State office use)

APPROVED  
AS AMENDED

PERMIT NO. \_\_\_\_\_ APPROVAL DATE \_\_\_\_\_  
APPROVED BY \_\_\_\_\_ TITLE \_\_\_\_\_ DATE NOV 18 1986  
CONDITIONS OF APPROVAL, IF ANY: /s/ J. Stan McKee

FOR: AREA MANAGER

NMOCC  
\*See Instructions On Reverse Side

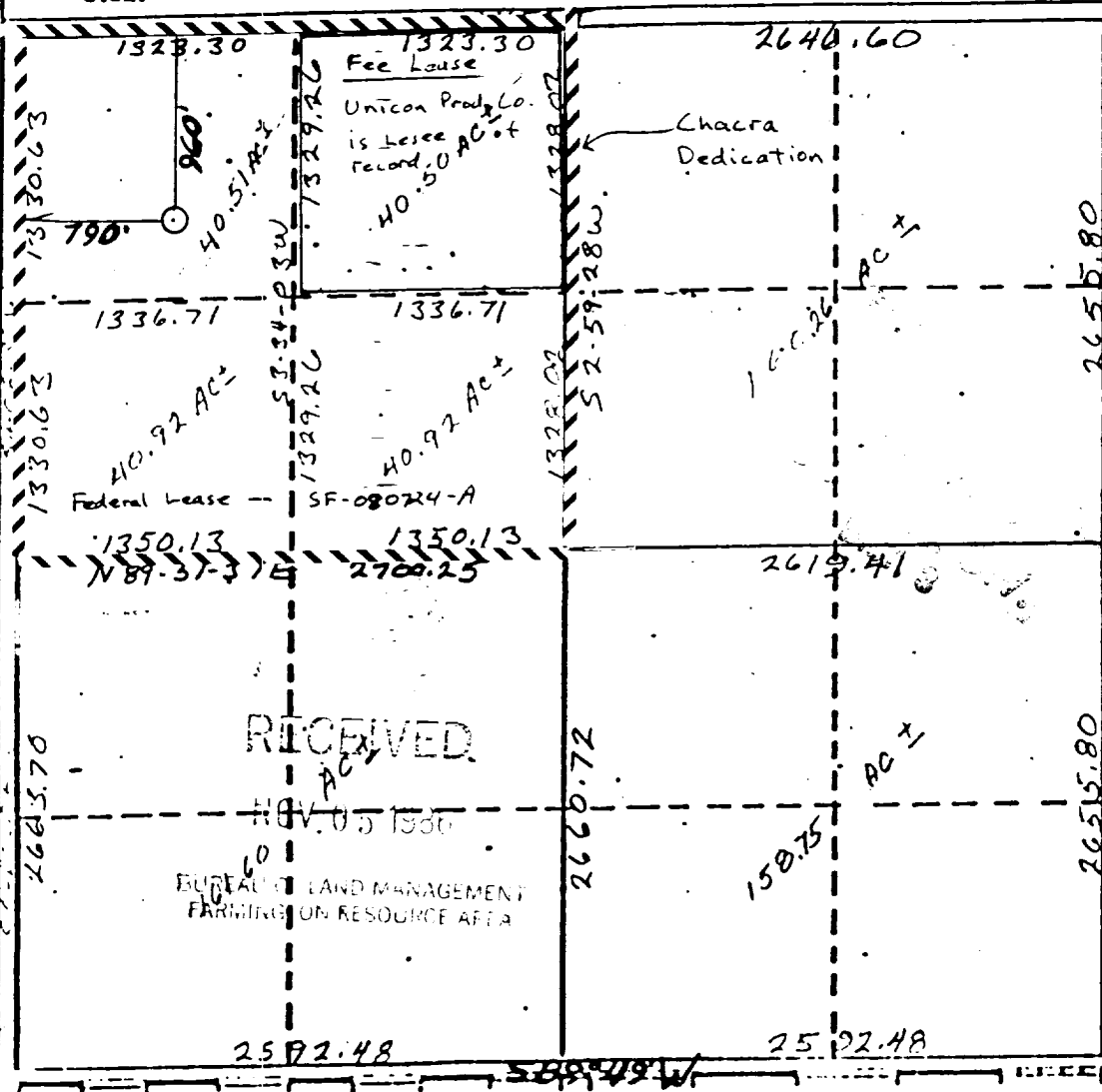
Form C-102  
Supersedes C-12  
Effective 1-4-88

Operator <b>UNION TEXAS PETROLEUM CORP.</b>		Lease <b>ZACHRY</b>		Well No. <b>60</b>
Unit Letter <b>D</b>	Section <b>34</b>	Township <b>29 NORTH</b>	Range <b>10 WEST</b>	County <b>SAN JUAN COUNTY</b>
Actual Footage Location of Well				
<b>960</b>	feet from the <b>NORTH</b>	line and <b>790</b>	feet from the <b>WEST</b>	line
Ground Level Elev. <b>5615</b>	Producing Formation <b>Chacra</b>	Pool <b>Otero</b>	Dedicated Acres <b>162.85 / 160</b> Acres	

- ☒ Yes    ☐ No    If answer is "yes," type of consolidation ~~Communitization~~

If answer is "no," list the owners and tract descriptions which have actually been consolidated. (Use reverse side of this form if necessary.) \_\_\_\_\_

No allowable will be assigned to the well until all interests have been consolidated (by communitization, unitization, forced-pooling, or otherwise) or until a non-standard unit, eliminating such interests, has been approved by the Commission.



I hereby certify that the information contained herein is true and complete to the best of my knowledge and belief.

Robert L. Truitt

**Notes**

Robert C. Frank

Position

Permit Coordinator

**Company**

Union Texas Petroleum

Date \_\_\_\_\_

November 4, 1986



**Data Surveyed**

October 10, 1986

**Registered Professional Engineer  
and/or Land Surveyor**

Cecil B. Tullis

### Confidentiality

9672

Exhibit I

