

30-045-26879

Form 3160-3
(November 1983)
(formerly 9-331C)

SUBMIT IN TRIPLICATE*
(Other instructions on
reverse side)

Form approved.
Budget Bureau No. 1004-0136
Expires August 31, 1985

UNITED STATES
DEPARTMENT OF THE INTERIOR
BUREAU OF LAND MANAGEMENT

APPLICATION FOR PERMIT TO DRILL, DEEPEN, OR PLUG BACK

1a. TYPE OF WORK
DRILL ☒ DEEPEN ☒ PLUG BACK ☐

b. TYPE OF WELL
OIL WELL ☐ GAS WELL ☒ OTHER ☐ SINGLE ZONE ☒ MULTIPLE ZONE ☐

2. NAME OF OPERATOR
Union Texas Petroleum

3. ADDRESS OF OPERATOR
375 US Highway 64 Farmington, NM 87401

4. LOCATION OF WELL (Report location clearly and in accordance with any State requirements.)
At surface
1010' FSL & 800' FWL
At proposed prod. zone

5. LEASE DESIGNATION AND SERIAL NO.
SF-081078

6. IF INDIAN, ALLOTTEE OR TRIBE NAME
N/A

7. UNIT AGREEMENT NAME
N/A

8. FARM OR LEASE NAME
ALBRIGHT

9. WELL NO.
19

10. FIELD AND POOL, OR WILDCAT
Otero Chacra

11. SEC., T., R., M., OR BLK. AND SURVEY OR AREA
M
Sec. 23, T29N-R10W

12. COUNTY OR PARISH
San Juan

13. STATE
NM

14. DISTANCE IN MILES AND DIRECTION FROM NEAREST TOWN OR POST OFFICE*
1.5 miles W-SW of Blanco, New Mexico

15. DISTANCE FROM PROPOSED* LOCATION TO NEAREST PROPERTY OR LEASE LINE, FT. (Also to nearest drig. unit line, if any)
310' from lease
800' from DU

16. NO. OF ACRES IN LEASE
160.00

17. NO. OF ACRES ASSIGNED TO THIS WELL
SW/4 158.38 acres

18. DISTANCE FROM PROPOSED LOCATION* TO NEAREST WELL, DRILLING, COMPLETED, OR APPLIED FOR, ON THIS LEASE, FT.
145'

19. PROPOSED DEPTH
3165'

20. ROTARY OR CABLE TOOLS
Rotary

21. ELEVATIONS (Show whether DF, RT, GR, etc.)
5595' G.L. (graded)

22. APPROX. DATE WORK WILL START*
May 15, 1988

23. PROPOSED CASING AND CEMENTING PROGRAM
This action is subject to technical and procedural review pursuant to 43 CFR 3165.3 and appeal pursuant to 43 CFR 3165.4.

SIZE OF HOLE	SIZE OF CASING	WEIGHT PER FOOT	SETTING DEPTH	QUANTITY OF CEMENT
12-1/4	8-5/8	24.0	350'	260 sx (307 cu.ft.)
6-1/4	2-7/8	6.5	3165'	610 sx (958 cu.ft.)

Union Texas Petroleum wishes to advise we intend to drill a 12-1/4" hole to 350'. Set 8-5/8", 24.0#, K-55, ST&C csg to 350', cementing to surface with 260 sx (307 cu.ft.) C1 "B" with 2% CaCl2 and 1/4# flocele/sk. Wait on cement 12 hours. Nipple up and test BOP. Drill 6-1/4" hole out of surface to 3165'. Log well. If commercial production is indicated, set 2-7/8", 6.5#, J-55 csg to 3165', cementing to surface with 610 sx (958 cu.ft) 50/50 POZ containing 4% gel and 6-1/4# gilsonite/sk. Perforate pay section in Chacra. Fracture stimulate. Install cathodic protection line from Albright 15. Tie well into UTP gathering system. The tie-in will be located on the Albright 15 wellpad, downstream of the Albright 15 meter house.

RECEIVED
APR 13 1988

IN ABOVE SPACE DESCRIBE PROPOSED PROGRAM: If proposal is to deepen or plug back, give data on present productive zone and proposed new productive zone. If proposal is to drill or deepen directionally, give pertinent data on subsurface locations and measured and true vertical depths. Give log without preventer program, if any.

24. SIGNED Robert C. Frank TITLE Permit Coordinator DATE 3/4/88

(This space for Federal or State office use)

PERMIT NO. _____ APPROVAL DATE _____

APPROVED BY _____ TITLE _____ DATE APR 13 1988

CONDITIONS OF APPROVAL, IF ANY:

APPROVED
AS AMENDED

APR 13 1988
AREA MANAGER

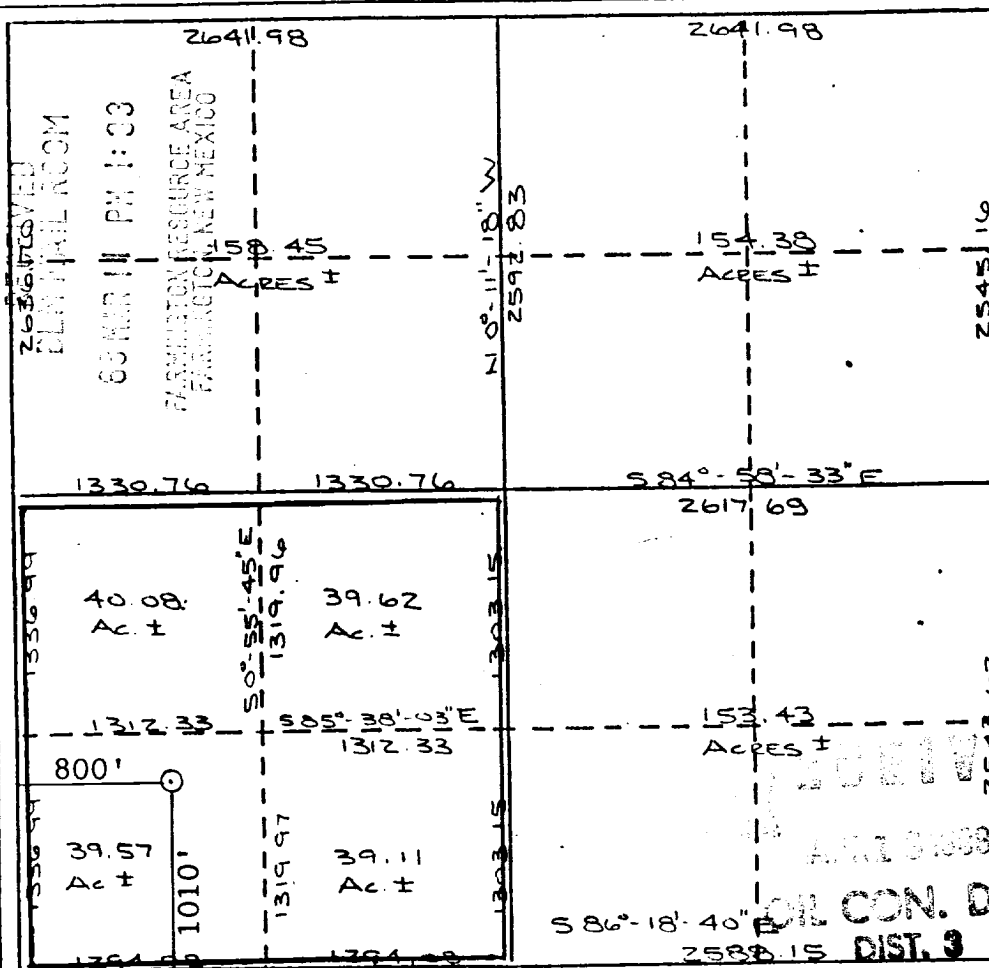
HOLD C-104 FOR ACREAGE CONSOLIDATION

*See Instructions On Reverse Side

Form C-102
Revised 10-1-79

Operator UNION TEXAS PETROLEUM		Lease ALBRIGHT		Well No. 19
Unit Letter M	Section 23	Township 29N	Range 10W	County San Juan
Actual Footage Location of Wells 1010 feet from the South line and 800 feet from the West line				
Ground Level Elev. 5595	Producing Formation Chacra	Pool Otero	Dedicated Acreage 160 SW/4 158.38 Acres	

- S 83°-59'E



9672

Exhibit I

