

UNITED STATES
DEPARTMENT OF THE INTERIOR
BUREAU OF LAND MANAGEMENT

5. LEASE DESIGNATION AND SERIAL NO.

SE-078926

6. IF INDIAN, ALLOTTEE OR TRIBE NAME

7. UNIT AGREEMENT NAME

Gallegos Canyon Unit

8. FARM OR LEASE NAME

9. WELL NO.

365

10. FIELD AND POOL, OR WILDCAT

W. Kutz Pictured Cliffs

11. SEC., T., R., M., OR BLK.
AND SURVEY OR AREA

Sec. 25-T29N-R13W

12. COUNTY OR PARISH 13. STATE

San Juan NEW MEXICO

1a. TYPE OF WORK

DRILL ☒

DEEPEN ☐

PLUG BACK ☐

b. TYPE OF WELL

OIL
WELL ☐

GAS
WELL ☒

OTHER

SINGLE
ZONE ☒

MULTIPLE
ZONE ☐

2. NAME OF OPERATOR

BHP Petroleum (Americas) Inc.

3. ADDRESS OF OPERATOR

5613 DTC Parkway, Suite 600, Englewood, CO 80111

4. LOCATION OF WELL (Report location clearly and in accordance with any State requirements.)*

At surface

SESE, 765' FEL, 900' FSL

At proposed prod. zone

14. DISTANCE IN MILES AND DIRECTION FROM NEAREST TOWN OR POST OFFICE*

Approximately 3.5 miles southeast of Farmington, N.M.

15. DISTANCE FROM PROPOSED*

LOCATION TO NEAREST
PROPERTY OR LEASE LINE, FT.
(Also to nearest drlg. unit line, if any)

9660'

16. NO. OF ACRES IN LEASE

1,160

17. NO. OF ACRES ASSIGNED
TO THIS WELL

160

18. DISTANCE FROM PROPOSED LOCATION*
TO NEAREST WELL, DRILLING, COMPLETED,
OR APPLIED FOR, ON THIS LEASE, FT.

150'

19. PROPOSED DEPTH

1370'

20. ROTARY OR CABLE TOOLS

Rotary

21. ELEVATIONS (Show whether DF, RT, GR, etc.)

5388' GR

DRILLING OPERATIONS AUTHORIZED ARE
SUBJECT TO COMPLIANCE WITH ATTACHED
"GENERAL REQUIREMENTS".

22. APPROX. DATE WORK WILL START*

As soon as approved

23. PROPOSED CASING AND CEMENTING PROGRAM

This action is subject to technical and
procedural review pursuant to 43 CFR 3165.3
and appeal pursuant to 43 CFR 3165.4.

SIZE OF HOLE	SIZE OF CASING	WEIGHT PER FOOT	SETTING DEPTH	
8-3/4"	7"	20#	120'	35 sx
6-1/4"	4 1/2"	9.5#	1370'	145 sx

RECEIVED

APR 25 1988

OIL CON. DIV./
DIST. 3

IN ABOVE SPACE DESCRIBE PROPOSED PROGRAM: If proposal is to deepen or plug back, give data on present productive zone and proposed new productive zone. If proposal is to drill or deepen directionally, give pertinent data on subsurface locations and measured and true vertical depths. Give blowout preventer program if any.

24.

SIGNED

Chuck Williams

TITLE Administrator, F.S.

DATE 03/03/88

(This space for Federal or State office use)

APPROVED
AS AMENDED

PERMIT NO.

APPROVAL DATE

APR 19 1988

APPROVED BY

TITLE

CONDITIONS OF APPROVAL, IF ANY:

See 104 for details

AREA MANAGER

*See Instructions On Reverse Side

**NEW MEXICO OIL CONSERVATION COMMISSION
WELL LOCATION AND ACREAGE DEDICATION PLAT**

Form C-102
Supersedes C-128
Effective 1-1-85

All distances must be from the outer boundaries of the Section.

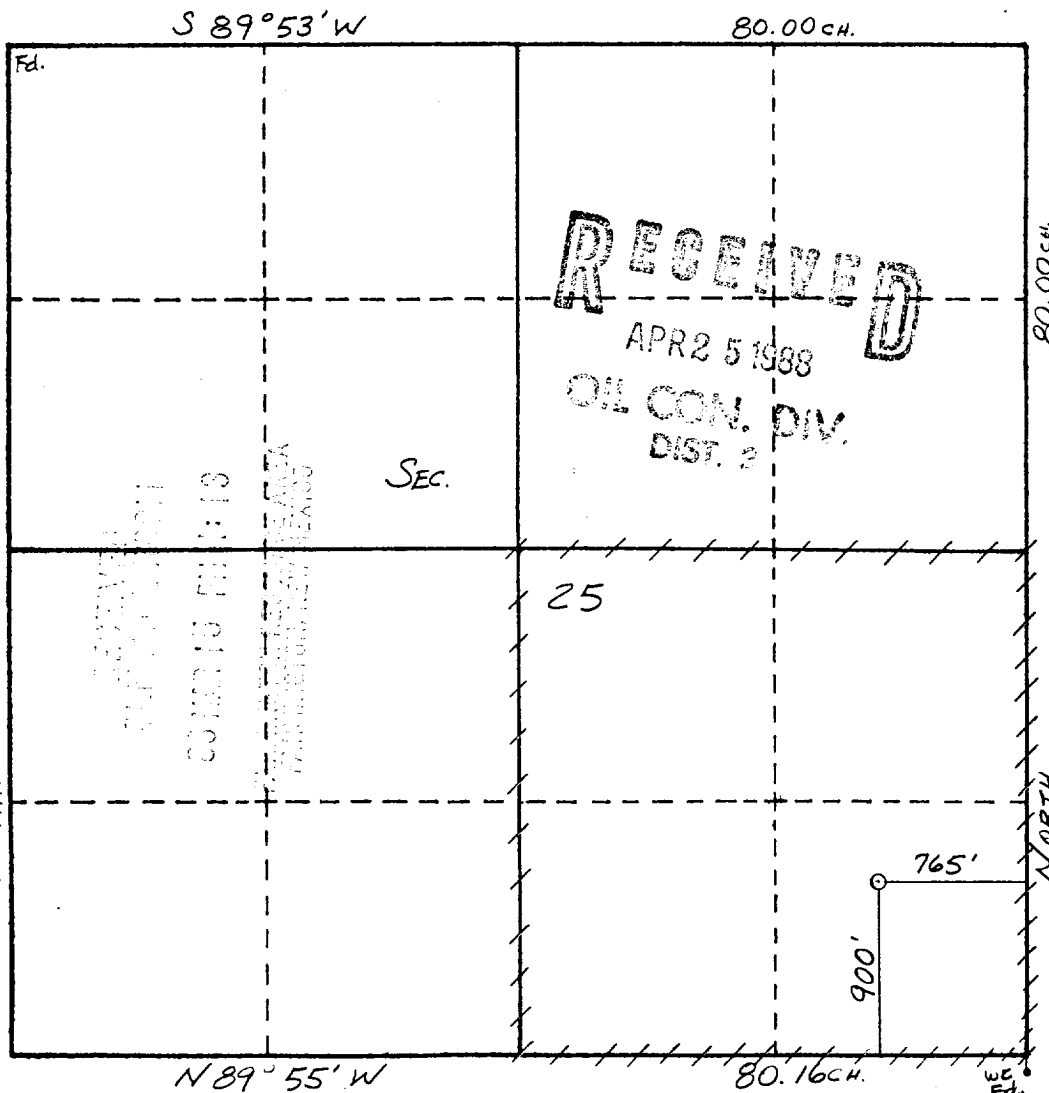
Operator BHP PETROLEUM (AMERICAS) INC.			Lease GALLEGOS CANYON UNIT		Well No. 365
Unit Letter P	Section 25	Township 29 N	Range 13 W	County SAN JUAN	
Actual Footage Location of Well: <div style="display: flex; justify-content: space-between;"> 900 feet from the SOUTH line and 765 feet from the EAST line </div>					
Ground Level Elev: 5388	Producing Formation Pictured Cliffs	Pool W. Kutz Pictured Cliffs	Dedicated Acreage: 160 Acres		

1. Outline the acreage dedicated to the subject well by colored pencil or hachure marks on the plat below.
2. If more than one lease is dedicated to the well, outline each and identify the ownership thereof (both as to working interest and royalty).
3. If more than one lease of different ownership is dedicated to the well, have the interests of all owners been consolidated by communitization, unitization, force-pooling, etc?

☒ Yes ☐ No If answer is "yes," type of consolidation unitization

If answer is "no," list the owners and tract descriptions which have actually been consolidated. (Use reverse side of this form if necessary.) _____

No allowable will be assigned to the well until all interests have been consolidated (by communitization, unitization, forced-pooling, or otherwise) or until a non-standard unit, eliminating such interests, has been approved by the Commission.



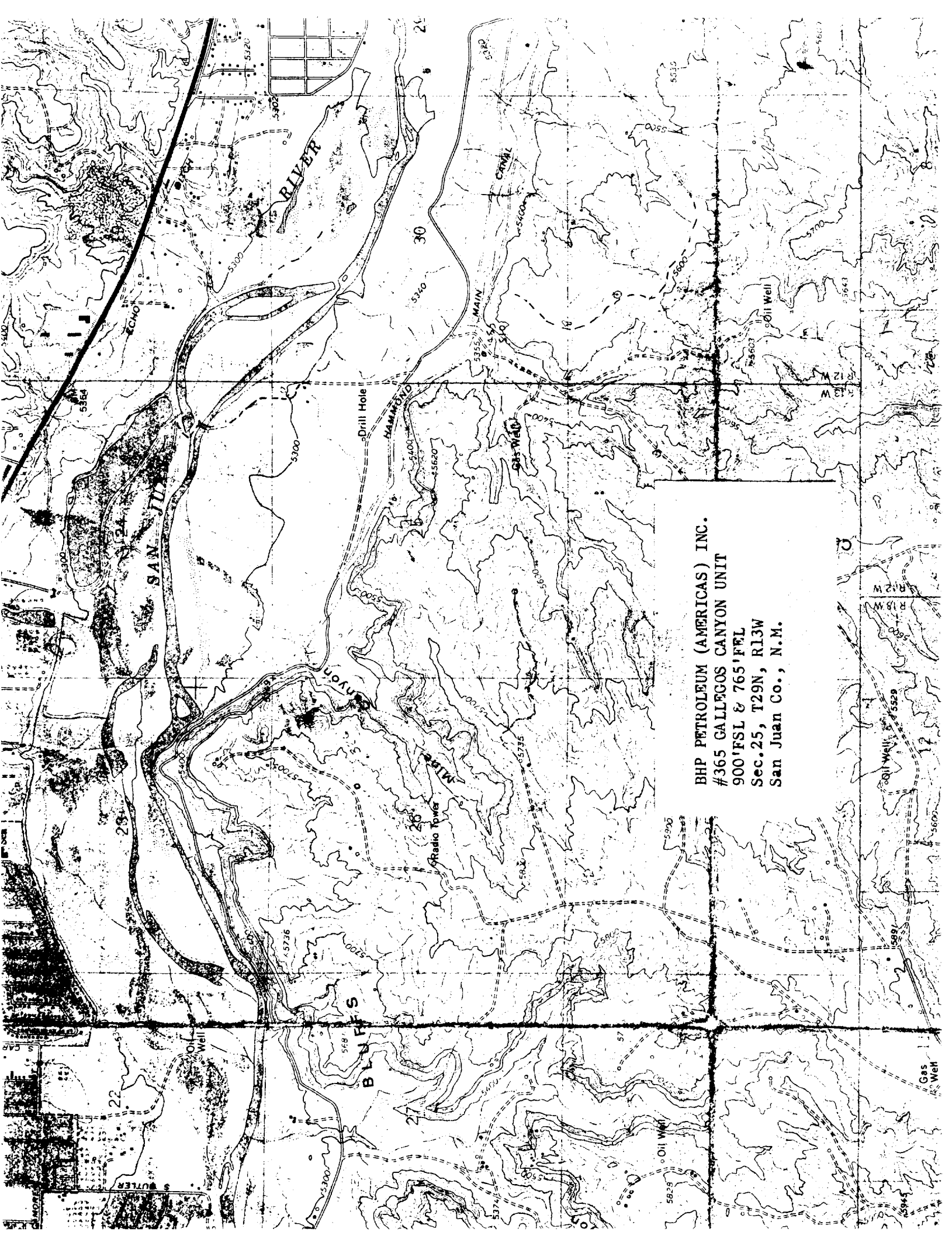
CERTIFICATION

I hereby certify that the information contained herein is true and complete to the best of my knowledge and belief.

Name Chuck Williams
 Position Administrator, F.S.
 Company BHP Petroleum (Americas)
 Date 03/03/88

I hereby certify that the well location shown on this plat was plotted from field notes of actual surveys made by me or under my supervision, and that the same is true and correct to the best of my knowledge and belief.

Date Surveyed W. MEX
 Registered Professional Engineer and Surveyor
 Certificate No. 8466



BHP PETROLEUM (AMERICAS) INC.
#365 GALLEGOS CANYON UNIT
900'FSL & 765'FEL
Sec.25, T29N, R13W
San Juan Co., N.M.