

UNITED STATES  
DEPARTMENT OF THE INTERIOR  
BUREAU OF LAND MANAGEMENT

30-045-26884

5. LEASE DESIGNATION AND SERIAL NO.  
SF-078580

6. IF INDIAN, ALLOTTEE OR TRIBE NAME

7. UNIT AGREEMENT NAME

8. FARM OR LEASE NAME  
Howell A

9. WELL NO.  
300

10. FIELD AND POOL, OR WILDCAT  
Undes. Fruitland

11. SEC., T., R., M., OR BLK.  
AND SURVEY OR AREA  
Sec. 5, T-30-N, R- 8-W  
NMPM

12. COUNTY OR PARISH  
San Juan

13. STATE  
NM

APPLICATION FOR PERMIT TO DRILL, DEEPEN OR PLUG BACK

1a. TYPE OF WORK  
DRILL ☒ DEEPEN ☐ PLUG BACK ☐

b. TYPE OF WELL  
OIL WELL ☐ GAS WELL ☒ OTHER ☐

2. NAME OF OPERATOR  
Meridian Oil Inc.

3. ADDRESS OF OPERATOR  
PO Box 4289, Farmington, NM 87499

4. LOCATION OF WELL (Report location clearly and in accordance with any State requirements.)  
At surface 1145' N, 1810' W  
At proposed prod. zone

14. DISTANCE IN MILES AND DIRECTION FROM NEAREST TOWN OR POST OFFICE\*  
3 miles from Abe's Store

16. NO. OF ACRES IN LEASE  
160 1366.08

17. NO. OF ACRES ASSIGNED TO THIS WELL  
160.00 160.08

18. DISTANCE FROM PROPOSED LOCATION\* TO NEAREST WELL, DRILLING, COMPLETED OR APPLIED FOR, ON THIS LEASE, FT.  
1145'

19. PROPOSED DEPTH  
3124'

20. ROTARY OR CABLE TOOLS  
Rotary

21. ELEVATIONS (Show whether DP, RT, GR, etc.)  
6297' GL

22. APPROX. DATE WORK WILL START\*

| SIZE OF HOLE | SIZE OF CASING | WEIGHT PER FOOT | SETTING DEPTH | QUANTITY OF CEMENT        |
|--------------|----------------|-----------------|---------------|---------------------------|
| 12 1/4"      | 9 5/8"         | 32.3#           | 200'          | 125 cf. circulated        |
| 8 3/4"       | 7"             | 20.0#           | 3000'         | 470 cf to cover Ojo Alamo |
| 6 1/4"       | 5 1/2" liner   | 23.0#           | 3124'         | do not cement             |

23. DRILLING OPERATIONS AUTHORIZED ARE SUBJECT TO COMPLIANCE WITH ATTACHED "GENERAL REQUIREMENTS". This action is subject to technical and procedural review pursuant to 43 CFR 3165.3 and appeal pursuant to 43 CFR 3165.4.

The Fruitland formation will be completed.

A 3000 psi WP and 6000 psi test double gate preventer equipped with blind and pipe rams will be used for blow out prevention on this well.

This gas is dedicated.

The NW/4 of Section 5 is dedicated to this well.

RECEIVED  
APR 19 1988  
OIL & GAS DIV.  
BUREAU OF LAND MANAGEMENT

IN ABOVE SPACE DESCRIBE PROPOSED PROGRAM: If proposal is to deepen or plug back, give data on present productive zone and proposed new productive zone. If proposal is to drill or deepen directionally, give pertinent data on subsurface locations and measured and true vertical depths. Give blowout preventer program, if any.

24. SIGNED [Signature] TITLE Drilling Clerk DATE 03-21-88

(This space for Federal or State office use)

PERMIT NO. \_\_\_\_\_ APPROVAL DATE \_\_\_\_\_

APPROVED BY \_\_\_\_\_ TITLE \_\_\_\_\_ DATE \_\_\_\_\_

CONDITIONS OF APPROVAL, IF ANY:  
NMOC  
\*See Instructions On Reverse Side

Title 18 U.S.C. Section 1001, makes it a crime for any person knowingly and willfully to make to any department or agency of the United States any false, fictitious or fraudulent statements or representations as to any matter within its jurisdiction.

## OIL CONSERVATION DIVISION

P. O. BOX 2088

STATE OF NEW MEXICO  
ENERGY AND MINERALS DEPARTMENT

SANTA FE, NEW MEXICO 87501

Form C-102  
Revised 10-1-78

All distances must be from the outer boundaries of the Section.

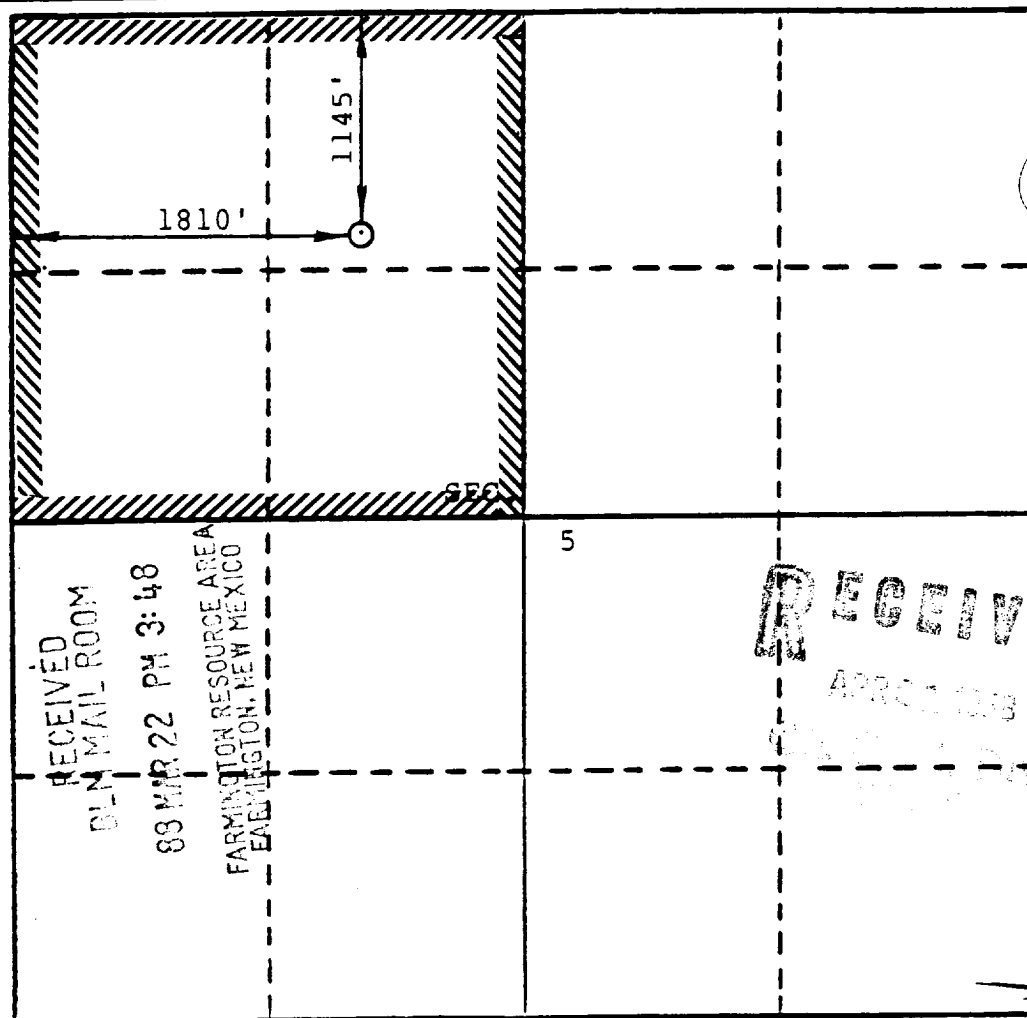
|  |              |                                  |                               |                    |                      |                 |                                   |  |
|--|--------------|----------------------------------|-------------------------------|--------------------|----------------------|-----------------|-----------------------------------|--|
| Operator<br>MERIDIAN OIL, INC.   |              |                                  | Lease<br>HOWELL A (SF-078580) |                    |                      | Well No.<br>300 |                                   |  |
| Unit Letter<br>C   | Section<br>5 | Township<br>30-N                 | Range<br>8-W                  | County<br>SAN JUAN |                      |                 |                                   |  |
| Actual Postage Location of Wells<br>1145 feet from the NORTH line and 1810 feet from the WEST line |              |                                  |                               |                    |                      |                 |                                   |  |
| Ground Level Elev.<br>6297   |              | Producing Formation<br>Fruitland |                               |                    | Pool<br>Undesignated |                 | Dedicated Acreage<br>160.55 Acres |  |

1. Outline the acreage dedicated to the subject well by colored pencil or hatchure marks on the plat below.
2. If more than one lease is dedicated to the well, outline each and identify the ownership thereof (both as to working interest and royalty).
3. If more than one lease of different ownership is dedicated to the well, have the interests of all owners been consolidated by communitization, unitization, force-pooling, etc?

☐ Yes ☐ No If answer is "yes," type of consolidation \_\_\_\_\_

If answer is "no," list the owners and tract descriptions which have actually been consolidated. (Use reverse side of this form if necessary.) \_\_\_\_\_

No allowable will be assigned to the well until all interests have been consolidated (by communitization, unitization, forced-pooling, or otherwise) or until a non-standard unit, eliminating such interests, has been approved by the Division.



## CERTIFICATION

I hereby certify that the information contained herein is true and complete to the best of my knowledge and belief.

Name  
Drilling Clerk  
Meridian Oil Inc.

Company  
3-21-88

Date

I hereby certify that the information contained herein is true and complete to the best of my knowledge and belief.

FEBRUARY 22, 1988

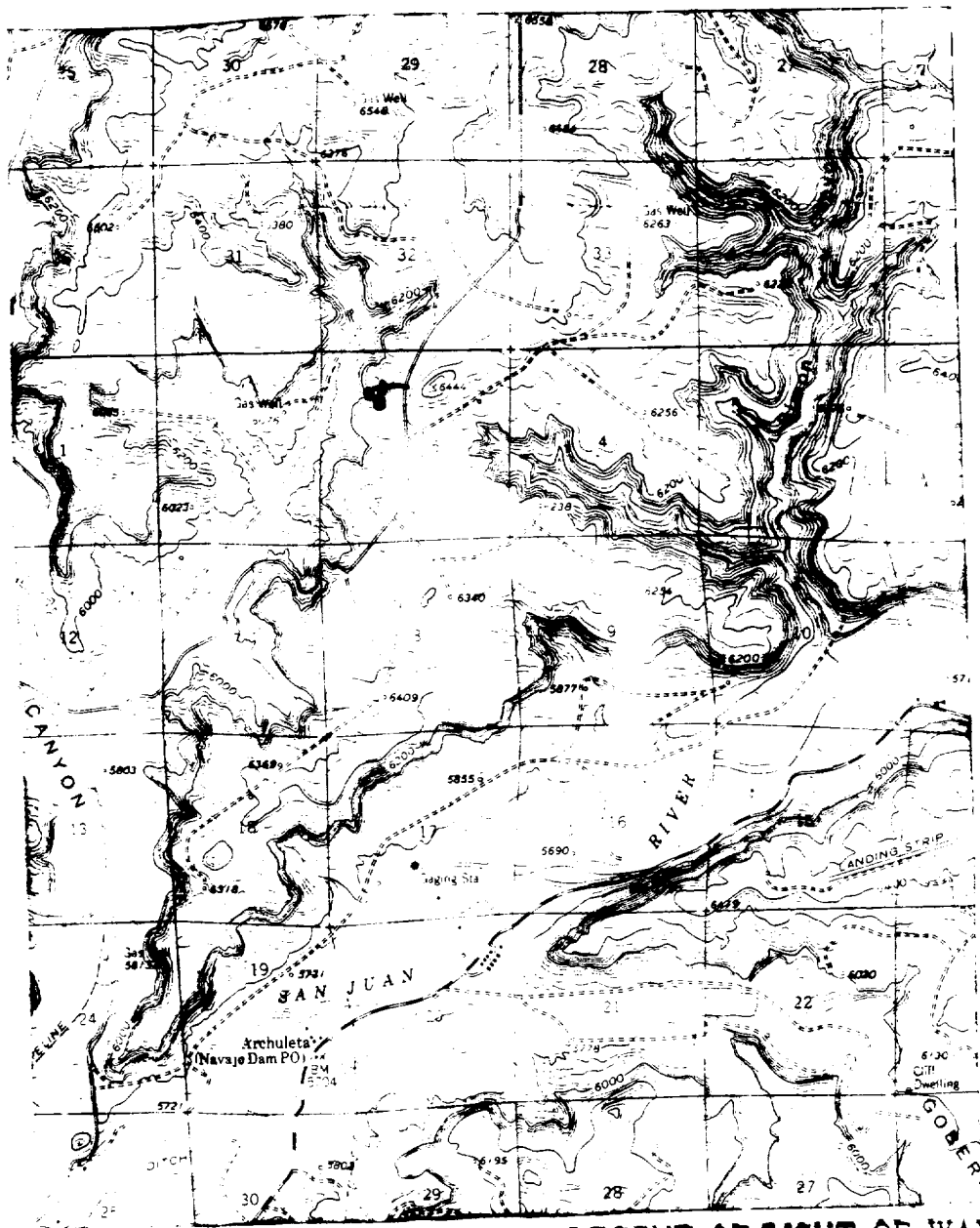
Date Surveyed  
ISAAC L. WEAVER

Registered Professional Engineer  
and/or Land Surveyor

Certificate No.

8966

House A 300  
NW 5-30-8



Map #2

# LEGEND OF RIGHT-OF-WAYS

- EXISTING ROADS
- EXISTING PIPELINES + + +
- EXISTING ROAD & PIPELINE + + + +
- PROPOSED ROADS
- PROPOSED PIPELINES
- PROPOSED ROAD & PIPELINE