

UNITED STATES
DEPARTMENT OF THE INTERIOR
BUREAU OF LAND MANAGEMENT

APPLICATION FOR PERMIT TO DRILL, DEEPEN, OR PLUG BACK

1a. TYPE OF WORK
DRILL ☒ DEEPEN ☐ PLUG BACK ☐
b. TYPE OF WELL
OIL WELL ☐ GAS WELL ☒
2. NAME OF OPERATOR
Meridian Oil Inc.
3. ADDRESS OF OPERATOR
PO Box 4289, Farmington, NM 87499
4. LOCATION OF WELL (Report location clearly and in accordance with any State requirements.)
At surface 1655' N, 1925' W
1840 1460
At proposed prod. zone
14. DISTANCE IN MILES AND DIRECTION FROM NEAREST TOWN OR POST OFFICE*
1 mile from Abe's Store
15. DISTANCE FROM PROPOSED*
LOCATION TO NEAREST
PROPERTY OR LEASE LINE, FT.
(Also to nearest drig. unit line, if any) 1655'
18. DISTANCE FROM PROPOSED LOCATION*
TO NEAREST WELL, DRILLING, COMPLETED, 300'
OR APPLIED FOR, ON THIS LEASE, FT.
21. ELEVATIONS (Show whether DF, RT, GR, etc.)
5897' GL
22. APPROX. DATE WORK WILL START*

16. NO. OF ACRES IN LEASE
160 1281.08
17. NO. OF ACRES ASSIGNED
TO THIS WELL 160.00
19. PROPOSED DEPTH
2670'
20. ROTARY OR CABLE TOOLS
Rotary

23. DRILLING OPERATIONS AUTHORIZED ARE
SUBJECT TO COMPLIANCE WITH ATTACHED
"GENERAL REQUIREMENTS".
PROPOSED CASING AND CEMENTING PROGRAM

SIZE OF HOLE	SIZE OF CASING	WEIGHT PER FOOT	SETTING DEPTH	QUANTITY OF CEMENT
12 1/4"	9 5/8"	32.3#	200'	125 cf. circulated
8 3/4"	7"	20.0#	2450'	296 cf to cover Ojo Alamo
6 1/4"	5 1/2" liner	23.0#	2670'	do not cement

The Fruitland formation will be completed.

A 3000 psi WP and 6000 psi test double gate preventer equipped with blind and pipe rams will be used for blow out prevention on this well.

This gas is dedicated.

The NW/4 of Section 17 is dedicated to this well.

RECEIVED
APR 1 1988
OJO ALAMO, NM
BVL

IN ABOVE SPACE DESCRIBE PROPOSED PROGRAM: If proposal is to deepen or plug back, give data on present productive zone and proposed new productive zone. If proposal is to drill or deepen directionally, give pertinent data on subsurface locations and measured and true vertical depths. Give blowout preventer program, if any.

24. SIGNED [Signature] TITLE Drilling Clerk DATE 03-08-88
(This space for Federal or State office use)

PERMIT NO.
"Approval of this action does

not constitute an approval of the
conditions of approval. If any
holder legal or equitable rights
or title to this lease."

APPROVED
AS AMENDED
APPROVAL DATE APR 12 1988
TITLE [Signature] AREA MANAGER

APPROVED
AS AMENDED
DATE APR 08 1988
[Signature] AREA MANAGER

NMOCC

*See Instructions On Reverse Side

OIL CONSERVATION DIVISION

STATE OF NEW MEXICO
ENERGY AND MINERALS DEPARTMENTP. O. BOX 2088
SANTA FE, NEW MEXICO 87501Form C-102
Revised 10-1-78

All distances must be from the outer boundaries of the Section.

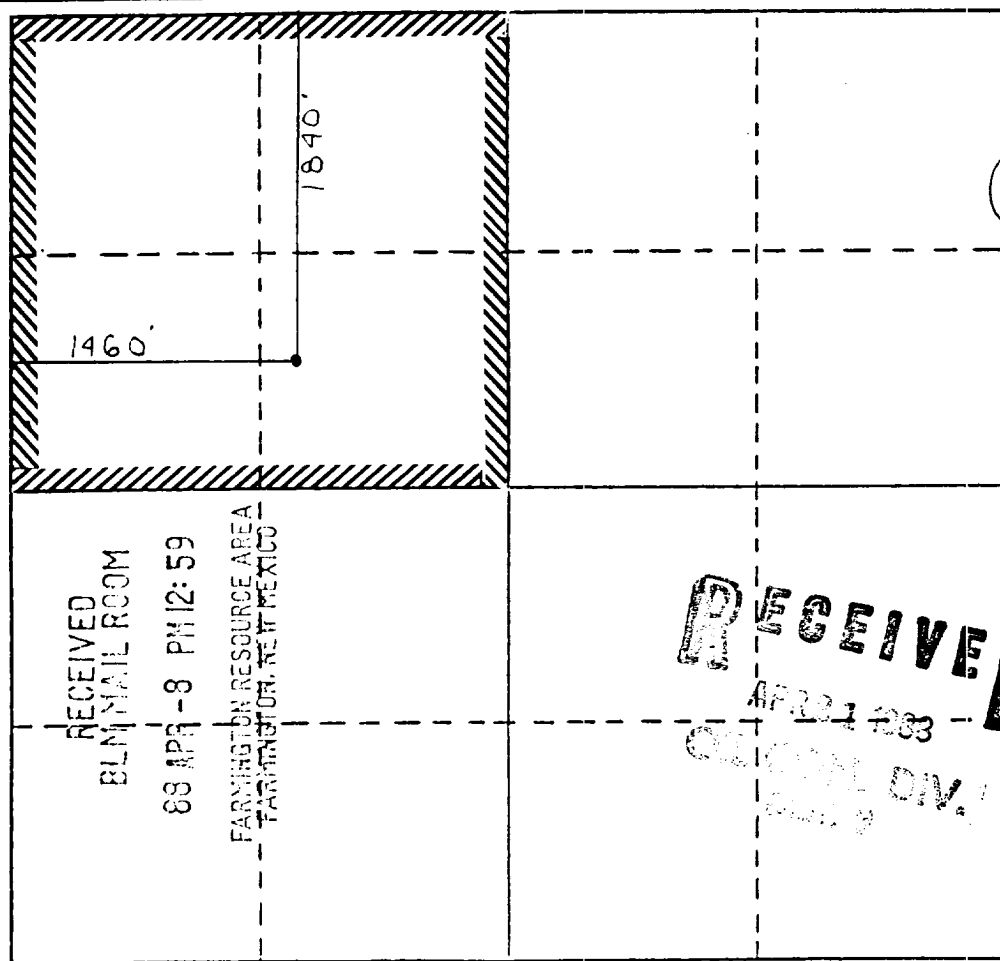
Operator Meridian Oil Co.			Lease Howell COM K (SE-078578A)		Well No. 301
Unit Letter F	Section 17	Township T30N	Range R8W	County San Juan	
Actual Footage Location of Well: 1840 feet from the North line and 1460 feet from the West line					
Ground Level Elev. 5898	Producing Formation Fruitland		Pool Undesignated		Dedicated Acreage: 160 Acres

1. Outline the acreage dedicated to the subject well by colored pencil or hatchure marks on the plat below.
2. If more than one lease is dedicated to the well, outline each and identify the ownership thereof (both as to working interest and royalty).
3. If more than one lease of different ownership is dedicated to the well, have the interests of all owners been consolidated by communitization, unitization, force-pooling, etc?

☒ Yes ☐ No If answer is "yes," type of consolidation communitization

If answer is "no," list the owners and tract descriptions which have actually been consolidated. (Use reverse side of this form if necessary.) _____

No allowable will be assigned to the well until all interests have been consolidated (by communitization, unitization, forced-pooling, or otherwise) or until a non-standard unit, eliminating such interests, has been approved by the Division.
Reissued to show moved location



CERTIFICATION

I hereby certify that the information contained herein is true and complete to the best of my knowledge and belief.

Name

Drilling Clerk

Position

Meridian Oil Inc.

Company

Date

I hereby certify that the well location shown on this plat was plotted from field notes of actual surveys made by me or under my supervision, and that the same is true and correct to the best of my knowledge and belief.

Registered Professional
Land Surveyor

Date Surveyed

April 4, 1988

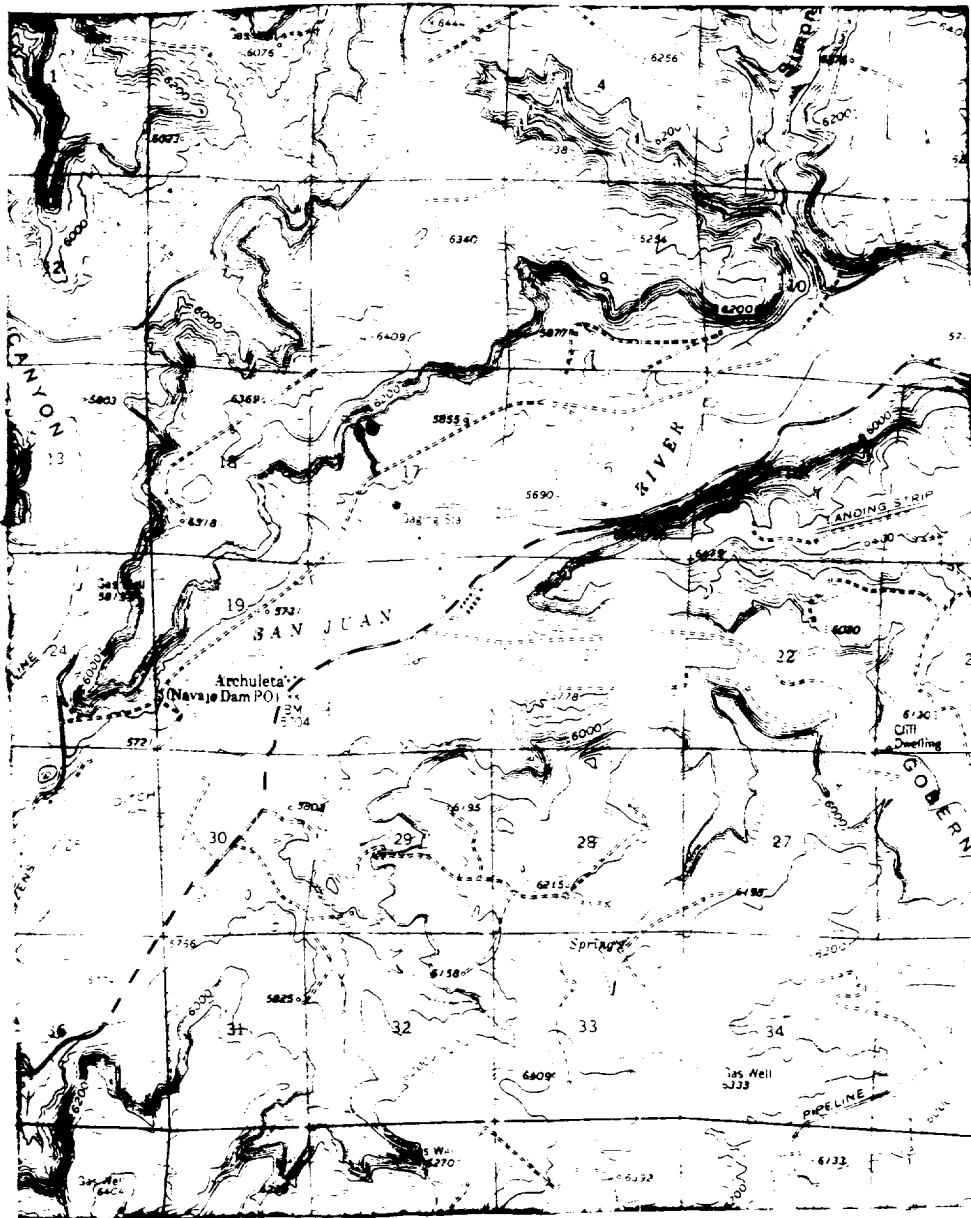
Registered Land Surveyor

R. Howard Daggett

Certificate No.

9679

Houma Com K 301
NW 17-30-8



Map #2

LEGEND OF RIGHT-OF-WAYS

- EXISTING ROADS —————
- EXISTING PIPELINES + + +
- EXISTING ROAD & PIPELINE + + + +
- PROPOSED ROADS - - - - -
- PROPOSED PIPELINES - - - - -
- PROPOSED ROAD & PIPELINE - - - - -