

UNITED STATES  
DEPARTMENT OF THE INTERIOR  
BUREAU OF LAND MANAGEMENT

RECEIVED  
BLM MAIL ROOM

APPLICATION FOR PERMIT TO DRILL, DEEPEN, OR PLUG BACK

1a. TYPE OF WORK

DRILL ☐

DEEPEN ☐

PLUG BACK ☐

b. TYPE OF WELL

OIL  
WELL ☐

GAS  
WELL ☒

OTHER ☐

2. NAME OF OPERATOR

Meridian Oil Inc.

3. ADDRESS OF OPERATOR

PO Box 4289, Farmington, NM 87499

4. LOCATION OF WELL (Report location clearly and in accordance with any State requirements.)

At surface  
1846'N, 1681'W

At proposed prod. zone

14. DISTANCE IN MILES AND DIRECTION FROM NEAREST TOWN OR POST OFFICE\*

3 miles from Abes Store

15. DISTANCE FROM PROPOSED\*

LOCATION TO NEAREST  
PROPERTY OR LEASE LINE, FT.  
(Also to nearest drig. unit line, if any)

1681'

18. DISTANCE FROM PROPOSED LOCATION\*  
TO NEAREST WELL, DRILLING, COMPLETED  
OR APPLIED FOR, ON THIS LEASE, FT.

200'

16. NO. OF ACRES IN LEASE

160 1280

19. PROPOSED DEPTH

2985'

17. NO. OF ACRES ASSIGNED  
TO THIS WELL

160.00

20. ROTARY OR CABLE TOOLS

Rotary

21. ELEVATIONS (Show whether DF, RT, GR, etc.)

6130'GL

DRILLING OPERATIONS AUTHORIZED ARE  
SUBJECT TO COMPLIANCE WITH ATTACHED  
"GENERAL REQUIREMENTS".

22. APPROX. DATE WORK WILL START\*

23.

PROPOSED CASING AND CEMENTING PROGRAM

This action is subject to technical and  
procedural review pursuant to 43 CFR 3165.3  
and appeal pursuant to 43 CFR 3165.4.

SIZE OF HOLE	SIZE OF CASING	WEIGHT PER FOOT	SETTING DEPTH	QUANTITY OF CEMENT
12 1/4"	9 5/8"	32.3#	200'	125 cf. circulated
8 3/4"	7"	20.0#	2805'	287 cf to cover Ojo Alamo
6 1/4"	5 1/2" liner	23.0#	2985'	do not cement

The Fruitland formation will be completed.

A 3000 psi WP and 6000 psi test double gate preventer equipped with  
blind and pipe rams will be used for blow out prevention on this well.

This gas is dedicated.

The NW/4 of Section 23 is dedicated to this well.

RECEIVED  
APR 29 1988  
OIL CON. DIV.  
DIST. 3

IN ABOVE SPACE DESCRIBE PROPOSED PROGRAM: If proposal is to deepen or plug back, give data on present productive zone and proposed new productive zone. If proposal is to drill or deepen directionally, give pertinent data on subsurface locations and measured and true vertical depths. Give blowout preventer program, if any.

24.

SIGNED

*Beggy Dora*

TITLE

Drilling Clerk

DATE

04-16-88

(This space for Federal or State office use)

PERMIT NO.

APPROVAL DATE

APPROVED BY

TITLE

CONDITIONS OF APPROVAL, IF ANY:

OF THIS PERMIT

NMOCC

\*See Instructions On Reverse Side

AREA MANAGER

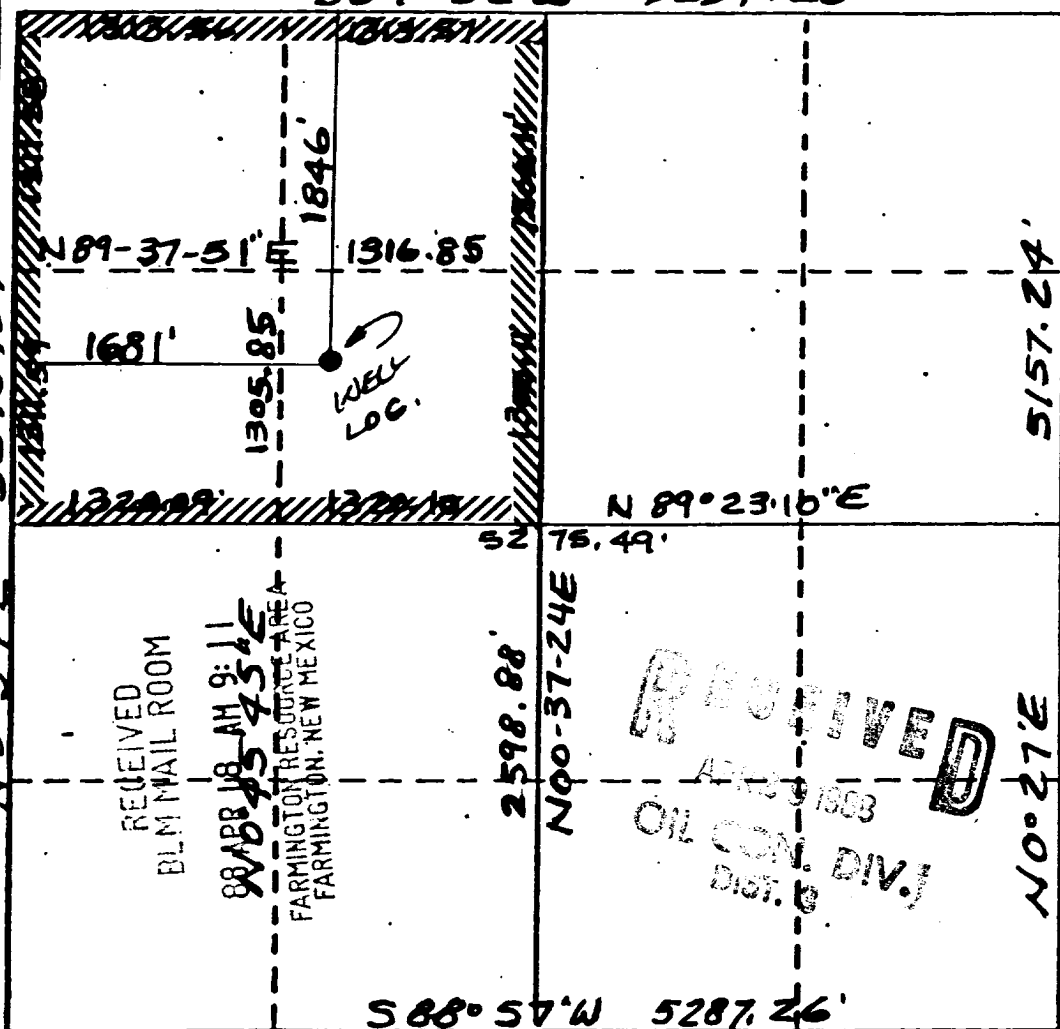
Supersides C-128  
Effective 14-63

Operator MERIDIAN OIL		Lease HOWELL L (SF-078385A)		Well No. 300
Unit Letter F	Section 23	Township 30N	Range 8W	County SAN JUAN COUNTY
Actual Footage Location of Wells 1846 feet from the NORTH line and 1681 feet from the WEST line				
Ground Level Elev. 6130	Producing Formation FRUITLAND	Pool Undesignated COAL	Dedicated Acreages 160 Acres	

- ☐ Yes ☐ No If answer is "yes," type of consolidation \_\_\_\_\_

No allowable will be assigned to the well until all interests have been consolidated (by communitization, unitization, forced-pooling, or otherwise) or until a non-standard unit, eliminating such interests, has been approved by the Commission.

~~509° 52' W 5254.26'~~ Reissued to show moved location



I hereby certify that the information contained herein is true and complete to the best of my knowledge and belief.

**News**

**Position**

Drilling Clerk

Company

Meridian Oil Inc.

Date \_\_\_\_\_

4-16-88

I hereby certify that the well location shown on this plot was plotted from field notes of actual surveys made by me or under my supervision, and that the same is true and correct to the best of my knowledge and belief.

3-30-88

Date Surveyed \_\_\_\_\_

Registered Professional Engineer  
and/or Land Surveyor

**Certificate No.**

