

UNITED STATES
DEPARTMENT OF THE INTERIOR
BUREAU OF LAND MANAGEMENT

APPLICATION FOR PERMIT TO DRILL, DEEPEN, OR PLUG BACK

1a. TYPE OF WORK

DRILL ☒

DEEPEN ☐

PLUG BACK ☐

b. TYPE OF WELL

OIL
WELL ☐

GAS
WELL ☒

OTHER

2. NAME OF OPERATOR

Meridian Oil Inc.

3. ADDRESS OF OPERATOR

PO Box 4289, Farmington, NM 87499

4. LOCATION OF WELL (Report location clearly and in accordance with any State requirements.)*

At surface
1430'N, 1090'W

At proposed prod. zone

14. DISTANCE IN MILES AND DIRECTION FROM NEAREST TOWN OR POST OFFICE*

8 miles from Navajo Dam

15. DISTANCE FROM PROPOSED*

LOCATION TO NEAREST
PROPERTY OR LEASE LINE, FT.
(Also to nearest drlg. unit line, if any)

1090'

16. NO. OF ACRES IN LEASE

160
219.70

17. NO. OF ACRES ASSIGNED

TO THIS WELL 160.00 109.20

18. DISTANCE FROM PROPOSED LOCATION*

TO NEAREST WELL, DRILLING, COMPLETION
OR APPLIED FOR, ON THIS LEASE, FT.

5 mile

19. PROPOSED DEPTH

2835'

20. ROTARY OR CABLE TOOLS

Rotary

21. ELEVATIONS (Show whether DF, RT, GR, etc.)

6018' GL DRILLING OPERATIONS AUTHORIZED ARE

22. APPROX. DATE WORK WILL START*

23. SUBJECT TO COMPLIANCE WITH ATTACHED PROPOSED CASING AND CEMENTING PROGRAM

"GENERAL REQUIREMENTS"

SIZE OF HOLE	SIZE OF CASING	WEIGHT PER FOOT	SETTING DEPTH	QUANTITY OF CEMENT
12 1/4"	9 5/8"	32.3#	200'	125 cf. circulated
8 3/4"	7"	20.0#	2630'	830 cf to cover Ojo Alamo
6 1/4"	5 1/2" liner	23.0#	2835'	do not cement

The Fruitland formation will be completed.

A 3000 psi WP and 6000 psi test double gate preventer equipped with blind and pipe rams will be used for blow out prevention on this well.

This gas is dedicated.

Lots 3, 4, 5 and 6 and the SE of the NW/4 and the NE of the SW/4 of Section 6 is dedicated to this well.

IN ABOVE SPACE DESCRIBE PROPOSED PROGRAM: If proposal is to deepen or plug back, give data on present productive zone and proposed new productive zone. If proposal is to drill or deepen directionally, give pertinent data on subsurface locations and measured and true vertical depths. Give blowout preventer program, if any.

24.

SIGNED

[Signature]

TITLE

Drilling Clerk

DATE

04-19-88

(This space for Federal or State office use)

PERMIT NO.

APPROVAL DATE

APPROVED BY

TITLE

DATE

CONDITIONS OF APPROVAL, IF ANY

WELD C-1046 in NSP

NMOCC

*See Instructions On Reverse Side

All distances must be from the outer boundaries of the Section.

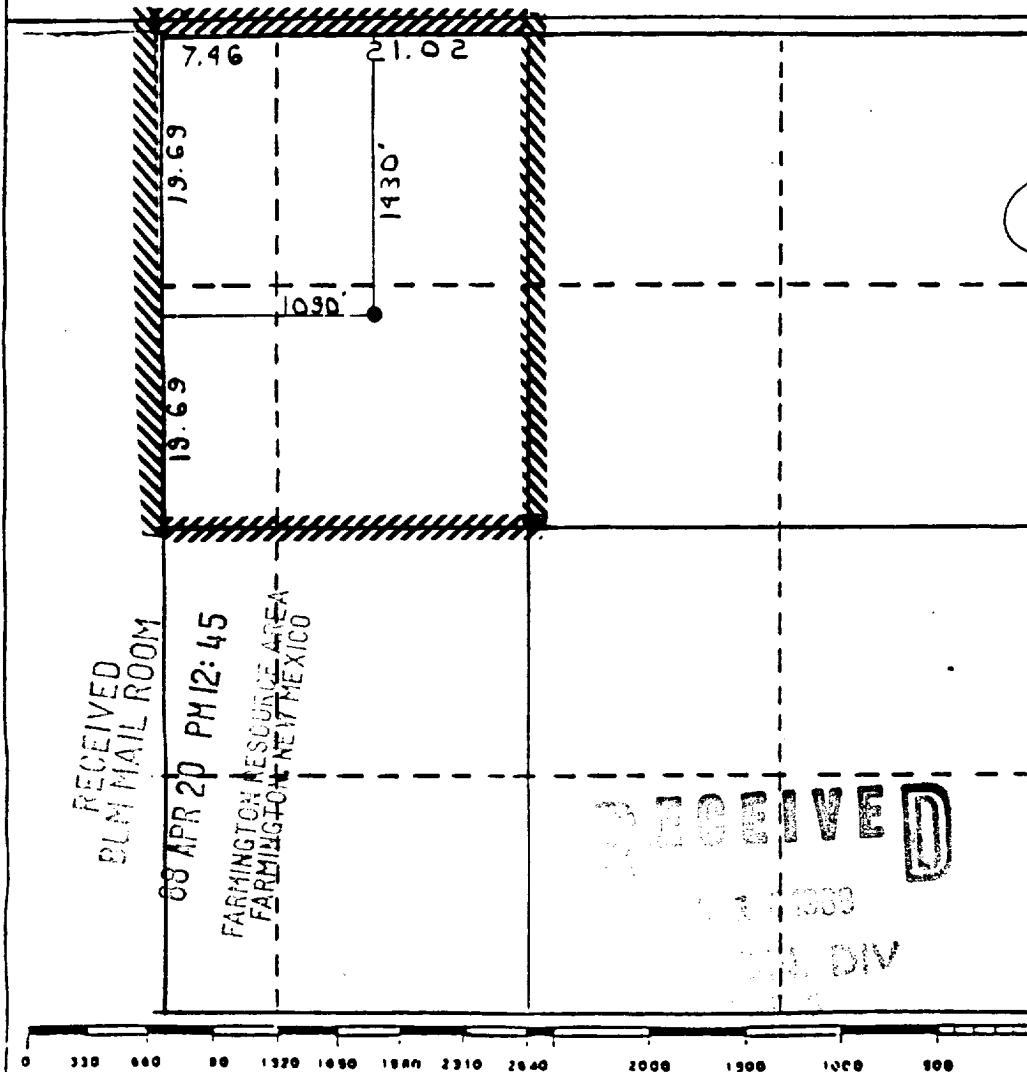
Operator Meridian Oil Co.		Lease Howell G (NM-012719)		Well No. 300
Unit Letter F	Section 6	Township T30N	Range R8W	County San Juan
Actual Footage Location of Wells 1430 feet from the North line and 1090 feet from the West line				
Ground Level Elev. 6018	Producing Formation Fruitland	Pool Undesignated	Dedicated Acreage 119.38 109.20 Acres	

1. Outline the acreage dedicated to the subject well by colored pencil or hatchure marks on the plat below.
2. If more than one lease is dedicated to the well, outline each and identify the ownership thereof (both as to working interest and royalty).
3. If more than one lease of different ownership is dedicated to the well, have the interests of all owners been consolidated by communitization, unitization, force-pooling, etc?

☐ Yes ☐ No If answer is "yes," type of consolidation _____

If answer is "no," list the owners and tract descriptions which have actually been consolidated. (Use reverse side of this form if necessary.) _____

No allowable will be assigned to the well until all interests have been consolidated (by communitization, unitization, forced-pooling, or otherwise) or until a non-standard unit, eliminating such interests, has been approved by the Division.



CERTIFICATION

I hereby certify that the information contained herein is true and complete to the best of my knowledge and belief.

[Signature]
Name _____

Drilling Clerk

Position

Meridian Oil Inc.

Company

4-19-88

Date

I hereby certify that the well location shown on this plat was plotted from field notes and actual surveys made by me or under my supervision, and that the same is true and correct to the best of my knowledge and belief.

Registered Professional

Date Surveyed

Land Surveyor

April 2, 1988

Registered Land Surveyor

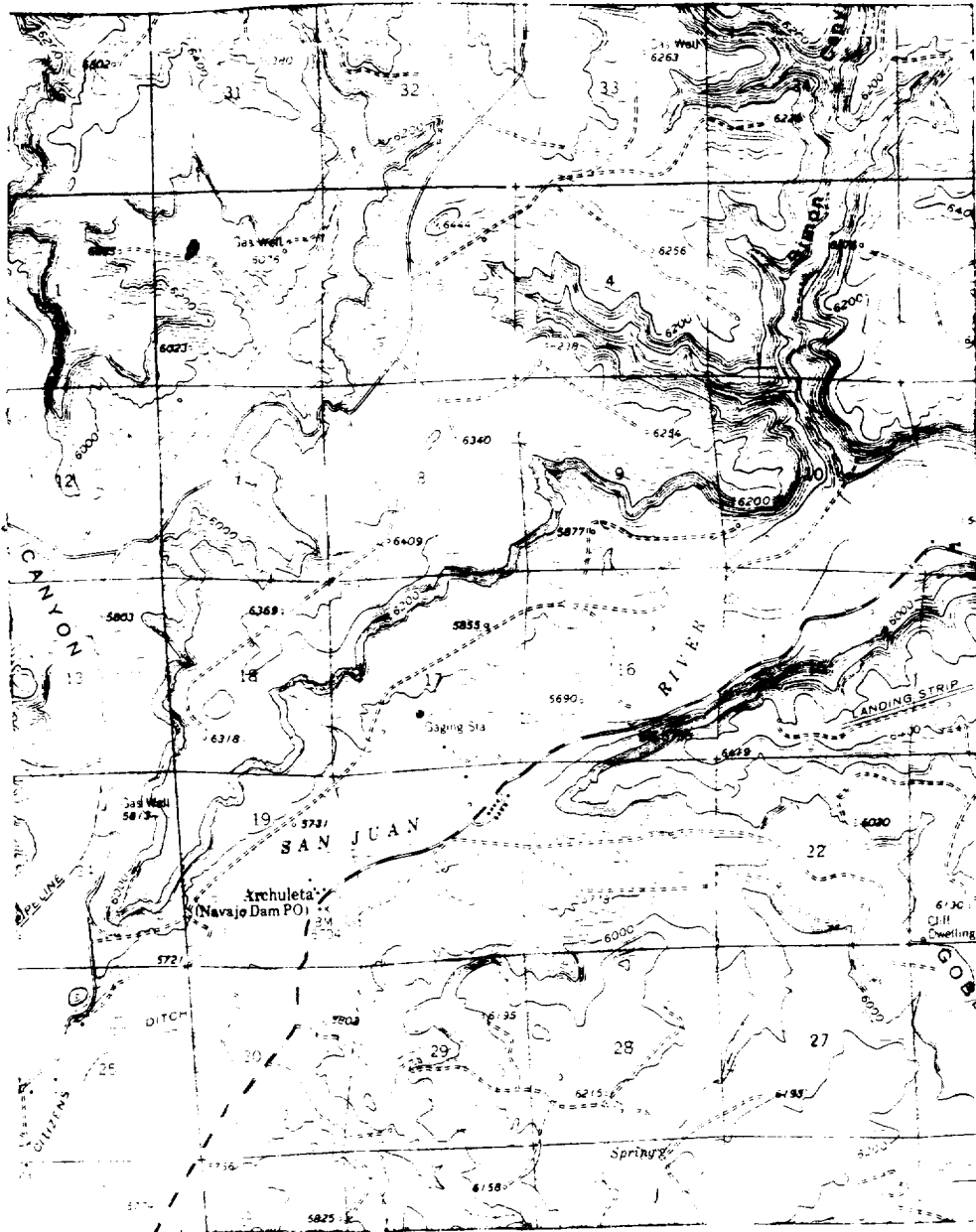
R. Howard Daggett

[Signature]
Certificate No.

9679

Howell G#300

NW/4 6-30-8



Map #2

LEGEND OF RIGHT-OF-WAYS

EXISTING ROADS

EXISTING PIPELINES

EXISTING ROAD & PIPELINE

PROPOSED ROADS

PROPOSED PIPELINES

PROPOSED ROAD & PIPELINE