

District I  
PO Box 1980, Hobbs, NM 88241-1980  
District II  
PO Drawer DD, Artesia, NM 88211-0710  
District III  
1000 Rio Brazos Rd., Aztec, NM 87410  
District IV  
PO Box 2088, Santa Fe, NM 87504-2088

RECEIVED  
NOV 2 1995  
OIL CONSERVATION DIVISION  
DIST. I

State of New Mexico  
Energy, Minerals & Natural Resources Department  
OIL CONSERVATION DIVISION  
PO Box 2088  
Santa Fe, NM 87504-2088

Form C-102  
Revised February 21, 1994  
Instructions on back  
Submit to Appropriate District Office  
State Lease - 4 Copies  
Fee Lease - 3 Copies

☐ AMENDED REPORT

### WELL LOCATION AND ACREAGE DEDICATION PLAT

API Number 30-045-26913		Pool Code 71629	Pool Name Basin Fruitland Coal
Property Code	Property Name Howell G Com		Well Number 300
OGRID No. 14538	Operator Name MERIDIAN OIL INC.		Elevation 6018'

#### 10 Surface Location

UL or lot no.	Section	Township	Range	Lot Ida	Feet from the	North/South line	Feet from the	East/West line	County
F	6	30 N	8 W		1430	North	1090	West	S.J.

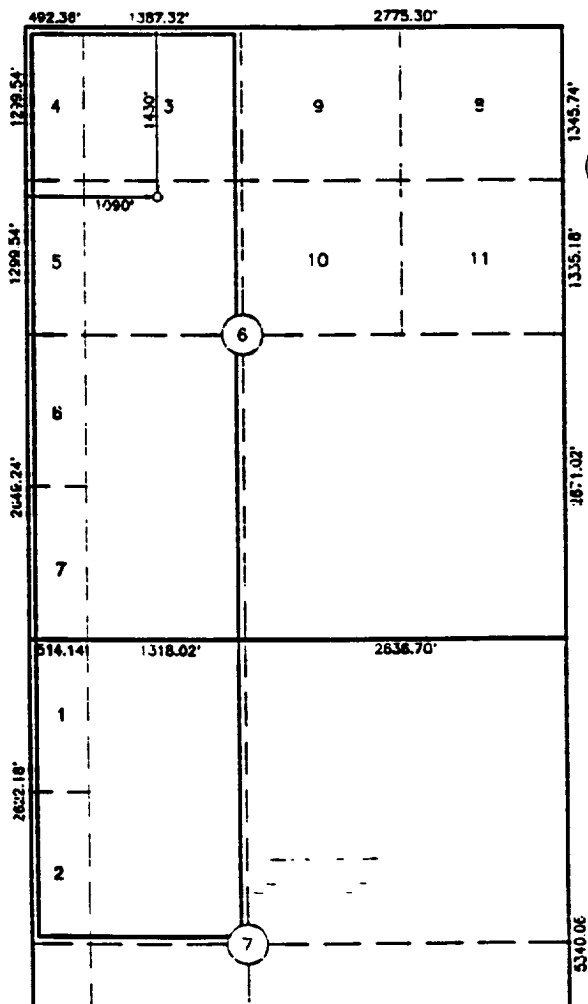
#### 11 Bottom Hole Location If Different From Surface

UL or lot no.	Section	Township	Range	Lot Ida	Feet from the	North/South line	Feet from the	East/West line	County

12 Dedicated Acres 219.75	13 Joint or Infill	14 Consolidation Code	15 Order No. NSP 1539	Communitization Agreement NM-87151
------------------------------	--------------------	-----------------------	--------------------------	------------------------------------

NO ALLOWABLE WILL BE ASSIGNED TO THIS COMPLETION UNTIL ALL INTERESTS HAVE BEEN CONSOLIDATED  
OR A NON-STANDARD UNIT HAS BEEN APPROVED BY THE DIVISION

Not resurveyed, prepared  
from a plat by R. Howard  
Daggett dated 4-2-88.



#### 17 OPERATOR CERTIFICATION

I hereby certify that the information contained herein is true and complete to the best of my knowledge and belief

*Peggy Bradfield*  
Signature  
Peggy Bradfield  
Printed Name  
Regulatory Administrator  
Title  
11-20-95  
Date

#### 18 SURVEYOR CERTIFICATION

I hereby certify that the well location shown on this plat was plotted from field notes of actual surveys made by me or under my supervision, and that the same is true and correct to the best of my belief.

4-29-95  
Date of Survey  
Signature and Seal of Professional Surveyor  
6857  
Certificate Number