

UNITED STATES
DEPARTMENT OF THE INTERIOR
BUREAU OF LAND MANAGEMENT

SUBMIT IN TRIPLICATE*
(Other instructions on
reverse side)

Form approved.
Budget Bureau No. 1004-0136
Expires August 31, 1985

RECEIVED
BLM MAIL ROOM

APPLICATION FOR PERMIT TO DRILL, DEEPEN, OR PLUG BACK

1a. TYPE OF WORK

DRILL ☒

DEEPEN ☐

PLUG BACK ☐

b. TYPE OF WELL

OIL
WELL ☐

GAS
WELL ☒

OTHER ☐

2. NAME OF OPERATOR

Meridian Oil Inc.

3. ADDRESS OF OPERATOR

PO Box 4289, Farmington, NM 87499

4. LOCATION OF WELL (Report location clearly and in accordance with any State requirements.)*

At NE/4 of Sec. 7, T-30-N, R-8-W
1165' E
233' S

At proposed prod. zone

14. DISTANCE IN MILES AND DIRECTION FROM NEAREST TOWN OR POST OFFICE*

2 miles from Abe's Store

15. DISTANCE FROM PROPOSED*
LOCATION TO NEAREST
PROPERTY OR LEASE LINE, FT.
(Also to nearest drig. unit line, if any)

1165'

18. DISTANCE FROM PROPOSED LOCATION*
TO NEAREST WELL, DRILLING, COMPLETION
OR APPLIED FOR, ON THIS LEASE, FT.

3000'

16. NO. OF ACRES IN LEASE

160-1361-08

19. PROPOSED DEPTH

3080'

17. NO. OF ACRES ASSIGNED
TO THIS WELL

160.00

20. ROTARY OR CABLE TOOLS

Rotary

21. ELEVATIONS (Show whether DF, RT, GR, etc.)

6230' GL This action is subject to technical and
6348' procedural review pursuant to 43 C.F.R. 3160.3
and approval pursuant to 43 C.F.R. 3160.4.

22. APPROX. DATE WORK WILL START*

DRILLING OPERATIONS AUTHORIZED ARE
SUBJECT TO COMPLIANCE WITH ATTACHED

SIZE OF HOLE	SIZE OF CASING	WEIGHT PER FOOT	SETTING DEPTH	"GENERAL REQUIREMENTS"
12 1/4"	9 5/8"	32.3#	200'	130 cf. circulated
8 3/4"	7"	20.0#	2870'	910 cf circ. surface
6 1/4"	5 1/2" liner	23.0#	3080'	do not cement

The Fruitland formation will be completed.

A 3000 psi WP and 6000 psi test double gate preventer equipped with
blind and pipe rams will be used for blow out prevention on this well.

This gas is dedicated.

The NE/4 of Section 7 is dedicated to this well.

RECEIVED
JUN 06 1988
OIL CON. DIV.
DIST. 3

IN ABOVE SPACE DESCRIBE PROPOSED PROGRAM: If proposal is to deepen or plug back, give data on present productive zone and proposed new productive zone. If proposal is to drill or deepen directionally, give pertinent data on subsurface locations and measured and true vertical depths. Give blowout preventer program, if any.

24. SIGNED [Signature] TITLE Drilling Clerk DATE 04-26-88

(This space for Federal or State office use)

PERMIT NO. _____ APPROVAL DATE _____

APPROVED BY _____ TITLE _____ DATE _____

CONDITIONS OF APPROVAL, IF ANY:

NMCCG

*See Instructions On Reverse Side

Title 18 U.S.C. Section 1001, makes it a crime for any person knowingly and willfully to make to any department or agency of the United States any false, fictitious or fraudulent statements or representations as to any matter within its jurisdiction.

**NEW MEXICO OIL CONSERVATION COMMISSION
WELL LOCATION AND ACREAGE DEDICATION PLAT**

Form O-100
Supersedes O-128
Effective 1-1-88

All distances must be from the outer boundaries of the Section.

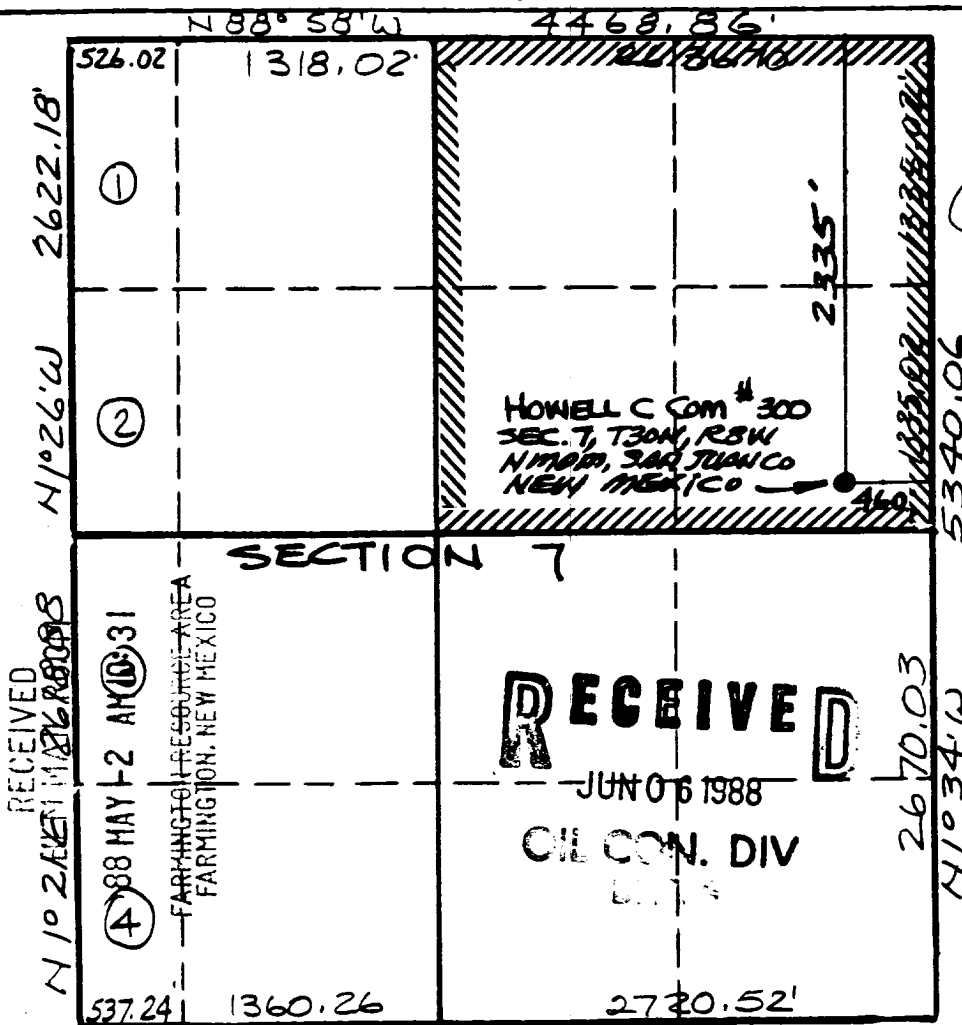
Operator MERIDIAN OIL INC.			Lease HOWELL C COM (SF 078580)		Well No. 300
Unit Letter H	Section 7	Township 30 NORTH	Range 8 WEST	County SAN JUAN	
Actual Footage Location of Well <div style="display: flex; justify-content: space-between;"> 2335 feet from the NORTH line and 460 feet from the EAST line </div>					
Ground Level Elev. 6348	Producing Formation Fruitland Coal		Pool Undesignated		Dedicated Acreage 160 Acres

1. Outline the acreage dedicated to the subject well by colored pencil or hatchure marks on the plat below.
2. If more than one lease is dedicated to the well, outline each and identify the ownership thereof (both as to working interest and royalty).
3. If more than one lease of different ownership is dedicated to the well, have the interests of all owners been consolidated by communitization, unitization, force-pooling, etc?

☒ Yes ☐ No If answer is "yes," type of consolidation communitization

If answer is "no," list the owners and tract descriptions which have actually been consolidated. (Use reverse side of this form if necessary.) _____

No allowable will be assigned to the well until all interests have been consolidated (by communitization, unitization, forced-pooling, or otherwise) or until a non-standard unit, eliminating such interests, has been approved by the Commission.



CERTIFICATION

I hereby certify that the information contained herein is true and complete to the best of my knowledge and belief.

Name _____
 Position **Drilling Clerk**
 Company **Meridian Oil Inc.**
 Date **4-28-88**

I hereby certify that the well location shown on this plat was obtained from field notes of a registered professional engineer or under my supervision, and that the same is true and correct to the best of my knowledge and belief.

Date Surveyed **APRIL 22, 1988**
 Registered Professional Engineer and/or Land Surveyor

NEALE C. EDWARDS

Engineer No.
6857



STATE OF NEW MEXICO

ENERGY, MINERALS AND NATURAL RESOURCES DEPARTMENT

OIL CONSERVATION DIVISION

GARREY CARRUTHERS
GOVERNOR

POST OFFICE BOX 2088
STATE LAND OFFICE BUILDING
SANTA FE, NEW MEXICO 87504
(505) 827-5800

June 1, 1988

Meridian Oil, Inc.
P.O. Box 4289
Farmington, NM 87499-4289

Attention: Peggy Doak

Administrative Order NSL-2525

Dear Ms. Doak:

Reference is made to your application for a non-standard location for your Howell C Com Well No. 300 to be located 2335 feet from the North line and 460 feet from the East line (Unit H) of Section 7, Township 30 North, Range 8 West, NMPM, Undesignated Blanco Fruitland Pool, San Juan County, New Mexico. The NE/4 of said Section 7 shall be dedicated to the well.

By authority granted me under the provisions of Rule 104 F(I), the above-described unorthodox location is hereby approved.

Sincerely,

WILLIAM J. LeMAY,
Director

WJL/DRC/ag

cc: Oil Conservation Division - Aztec

RECEIVED
JUN 06 1988
OIL CON. DIV.
DIST. 3



STATE OF NEW MEXICO
ENERGY AND MINERALS DEPARTMENT
OIL CONSERVATION DIVISION
AZTEC DISTRICT OFFICE

1000 RIO BRAZOS ROAD
AZTEC, NEW MEXICO 87410
(505) 334-6178

OIL CONSERVATION DIVISION
BOX 2088
SANTA FE, NEW MEXICO 87501

DATE 5-20-88

RE: Proposed MC _____
Proposed DHC _____
Proposed NSL X _____
Proposed SWD _____
Proposed WFX _____
Proposed PMX _____

Gentlemen:

I have examined the application dated 5-2-88
for the Martinez Oil, Inc. Howell Creek #300 H-7-300-805
Operator Lease and Well No. Unit, S-T-R

and my recommendations are as follows:

Approved

Yours truly,

[Signature]

MERIDIAN OIL

April 29, 1988

Mr. William LeMay
New Mexico Oil Conservation Division
Post Office Box 2088
Santa Fe, New Mexico 87501

Dear Mr. LeMay:

This is a request for administrative approval for an unorthodox gas well location in the Undesignated Fruitland Coal Pool.

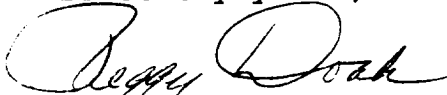
It is intended to locate the Meridian Oil Inc.'s Howell C Com #300 at 2335' from the North line and 460' from the East line of Section 7, T-30-N, R-8-W, San Juan County, New Mexico.

Archaeological problems makes it impossible to build an orthodox location in the northeast quarter of this section.

A copy of this application is being submitted to all offset operators by certified mail with a request that they furnish your Santa Fe office with a Waiver of Objection, and return one copy to this office.

Plats showing the proposed well location and the terrain in Section 7, along with an ownership plat, are attached.

Sincerely yours,



Peggy Doak

encl.

WAIVER

_____ hereby waives objection to Meridian Oil Inc.'s application for an unorthodox location for their Howell C Com #300 as proposed above.

By: _____

Date: _____

cc: Tenneco Oil

4/29/88
NEW MEXICO
OIL CON. DIV.
SANTA FE, N.M.

**NEW MEXICO OIL CONSERVATION COMMISSION
WELL LOCATION AND ACREAGE DEDICATION PLAT**

Form C-100
Supersedes C-120
Effective 1-1-88

All distances must be from the outer boundaries of the Section.

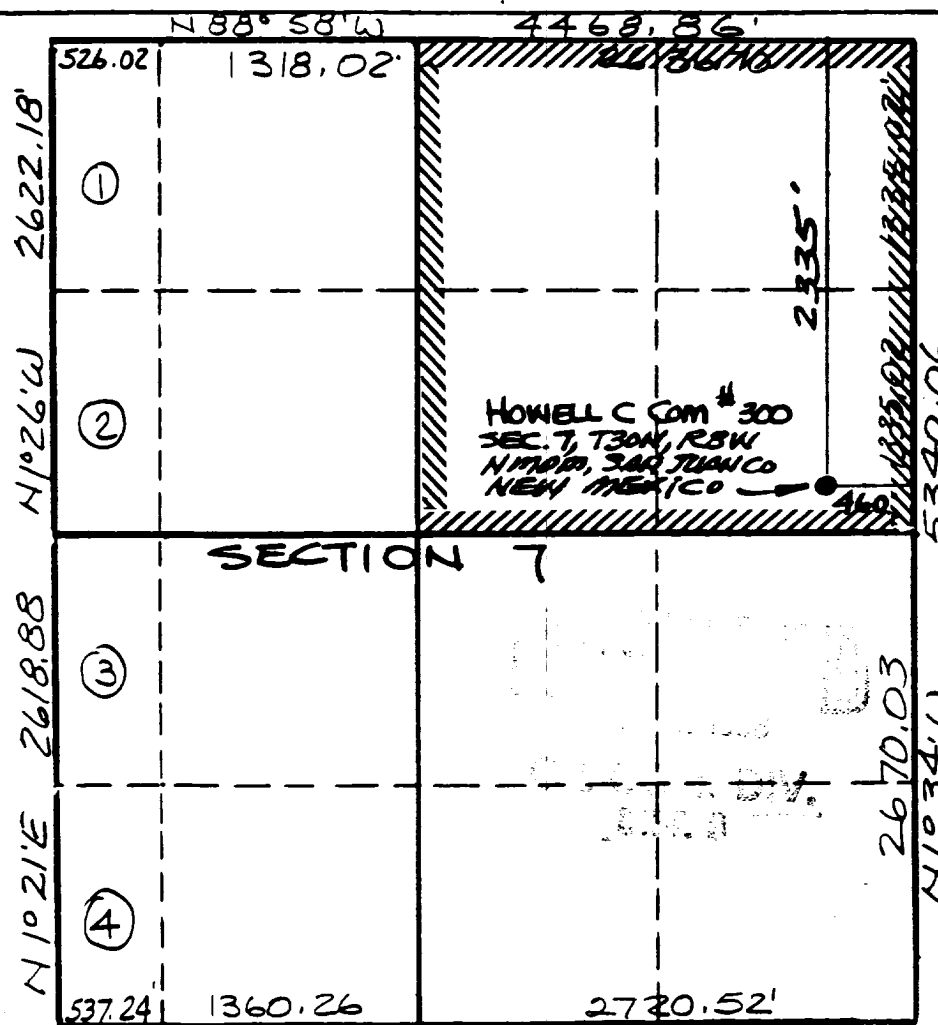
Operator MERIDIAN OIL INC.			Lease HOWELL C COM (SF 078580)		Well No. 300
Unit Letter H	Section 7	Township 30 NORTH	Range 8 WEST	County SAN JUAN	
Actual Footage Location of Well <div style="display: flex; justify-content: space-between;"> 2335 feet from the NORTH line and 460 feet from the EAST line </div>					
Ground Level Elev. 6348	Producing Formation Fruitland Coal	Pool Undesignated	Dedicated Acreage 160 Acres		

1. Outline the acreage dedicated to the subject well by colored pencil or hatchure marks on the plat below.
2. If more than one lease is dedicated to the well, outline each and identify the ownership thereof (both as to working interest and royalty).
3. If more than one lease of different ownership is dedicated to the well, have the interests of all owners been consolidated by communitization, unitization, force-pooling, etc?

☒ Yes ☐ No If answer is "yes," type of consolidation communitization

If answer is "no," list the owners and tract descriptions which have actually been consolidated. (Use reverse side of this form if necessary.) _____

No allowable will be assigned to the well until all interests have been consolidated (by communitization, unitization, forced-pooling, or otherwise) or until a non-standard unit, eliminating such interests, has been approved by the Commission.



CERTIFICATION

I hereby certify that the information contained herein is true and complete to the best of my knowledge and belief.

Name _____
 Position Drilling Clerk
 Company Meridian Oil Inc.

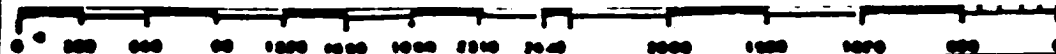
Date _____

I hereby certify that the well location shown on this plat was taken from field notes of _____ or under my supervision, and that the same is true and correct to the best of my knowledge and belief.

Date Surveyed APRIL 22, 1988
 Registered Professional Engineer and/or Land Surveyor

NEALE C. EDWARDS

Certificate No. **6857**



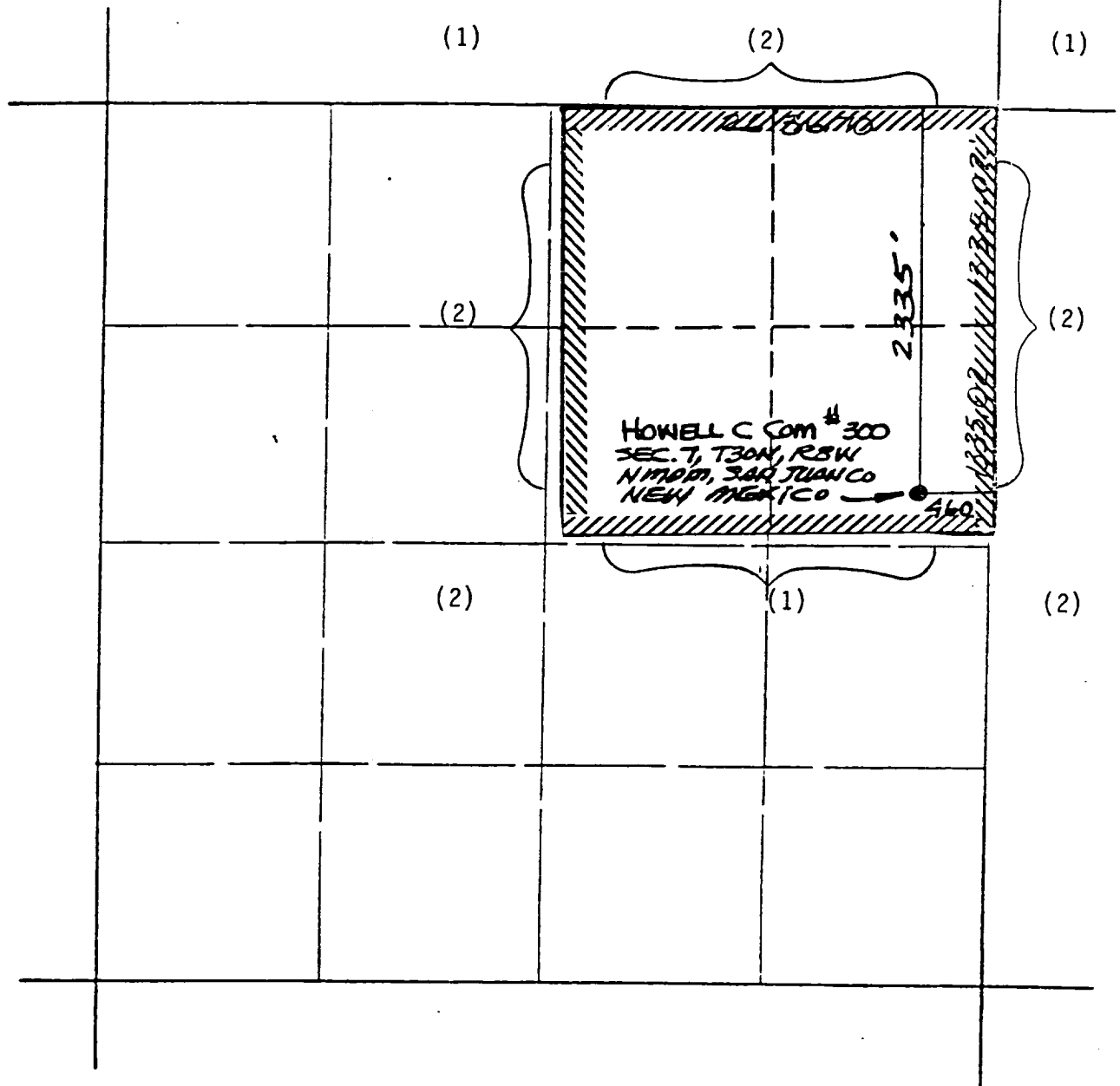
MERIDIAN OIL INC.

Well Name Howell C Com #300, Undesignated Fruitland

Footage----- 2335' FNL, 460' FEL

APPLICATION FOR NON-STANDARD LOCATION

County San Juan State New Mexico Section 7 Township 30N Range 8W

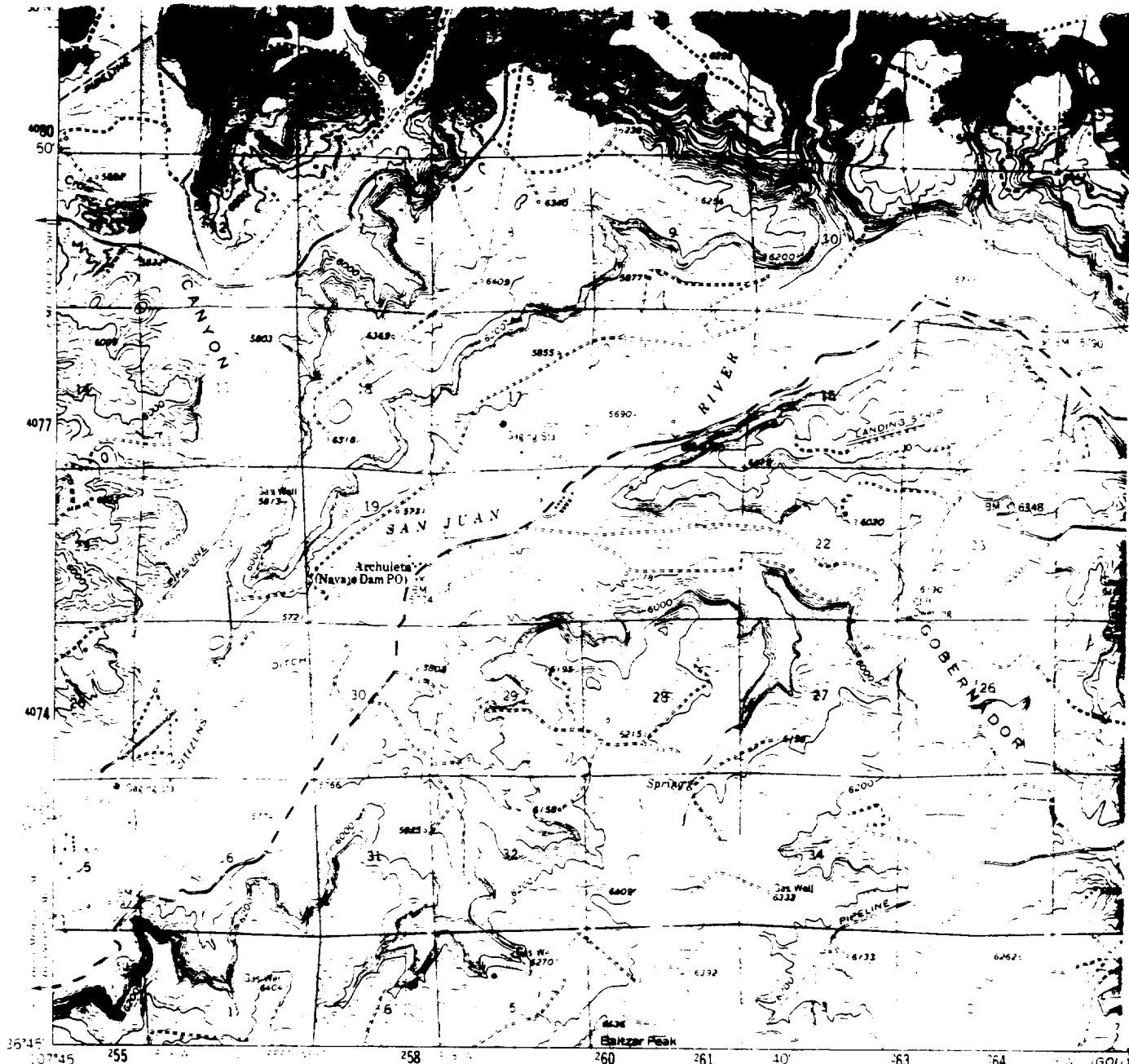


REMARKS: OFFSET OPERATORS

(1) Meridian Oil Inc

(2) Tenneco Oil Company

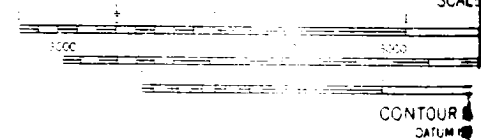
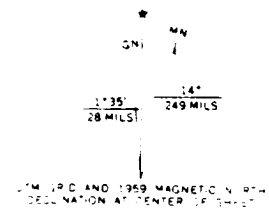
(10)



BLOOMFIELD
4457 III

Mapped, edited, and published by the Geological Survey
Control by USGS and USC&GS
East half compiled in 1954 from 1:24,000 scale maps
dated 1954. West half compiled by photogrammetric
methods from aerial photography taken in 1955.
Field checked 1959.
Polyconic projection. 1927 North American datum.
10,000 foot grid based on New Mexico coordinate system,
west and central zones.
1000 meter Universal Transverse Mercator grid ticks,
zone 13, shown in blue.

Boundary lines and names are shown as they are used by Navajo
tribe. (U.S. Government, 1954).
Area covered by dashed light blue outline is subject
to future revision to show changes.



FOR SALE BY U.S. GEOLOGICAL SURVEY, DENVER
A FOLDER DESCRIBING TOPOGRAPHIC