

UNITED STATES
DEPARTMENT OF THE INTERIOR
GEOLOGICAL SURVEY

APPLICATION FOR PERMIT TO DRILL, DEEPEN, OR PLUG BACK

1a. TYPE OF WORK

DRILL ☒DEEPEN ☐PLUG BACK ☐

b. TYPE OF WELL

OIL
WELL ☐GAS
WELL ☒OTHER ☐

2. NAME OF OPERATOR

Blackwood & Nichols Co., Ltd.

3. ADDRESS OF OPERATOR

P.O. Box 1237 Durango, Colorado 81302-1237

4. LOCATION OF WELL (Report location clearly and in accordance with applicable requirements.)

At surface

920' FSL - 2100' FWL

At proposed prod. zone

Same

14. DISTANCE IN MILES AND DIRECTION FROM NEAREST TOWN OR POST OFFICE

12 miles NE of Blanco, New Mexico

15. DISTANCE FROM PROPOSED*

LOCATION TO NEAREST
PROPERTY OR LEASE LINE, FT.
(Also to nearest drlg. unit line, if any)

920'

18. DISTANCE FROM PROPOSED LOCATION*
TO NEAREST WELL, DRILLING, COMPLETED,
OR APPLIED FOR, ON THIS LEASE, FT.

600'

21. ELEVATIONS (Show whether DF, RT, GR, etc.)

6211' GL

16. NO. OF ACRES IN LEASE

320.00

19. PROPOSED DEPTH

3150'

17. NO. OF ACRES ASSIGNED
TO THIS WELL

320

20. ROTARY OR CABLE TOOLS

Rotary

22. APPROX. DATE WORK WILL START*

November 15, 1988

23.

PROPOSED CASING AND CEMENTING PROGRAM

SIZE OF HOLE	SIZE OF CASING	WEIGHT PER FOOT	SETTING DEPTH	QUANTITY OF CEMENT
12 1/4"	9 5/8"	36#	300'	207 cuft to circulate
8 3/4"	7"	23#	2850'	781 cuft to circulate
6 1/4"	5 1/2"	17#	2750'-3150'	39 cuft to circulate

Propose to spud in San Jose formation. Will drill 12 1/4" surface hole to a TD of 300: Surface casing will be run and cemented with cement returns to surface. WOC 12 hours. Test to 600 psi. Drill 8 3/4" hole with fresh water mud to intermediate TD. No abnormal pressures or poisonous gases are anticipated. Casing will be run and cemented with cement returns to surface. WOC 12 hours. Test to 1500 psi. Drill 6 1/4" hole through Fruitland Coals with water. A liner may be run if hole conditions dictate. The liner may or may not be cemented, depending on the wells natural producing ability.

This APD requests a pipeline ROW for the segment of the line that will run off the well pad to the existing line south of the location. This line will follow the access road for approximately 50' before it joins the existing pipeline ROW. A 3 or 4" line will be used depending on the well's producing ability. The line will be buried at least 36" deep.

IN ABOVE SPACE DESCRIBE PROPOSED PROGRAM: If proposal is to deepen or plug back, give data on present productive zone and proposed new productive zone. If proposal is to drill or deepen directionally, give pertinent data on subsurface locations and measured and true vertical depths. Give blowout preventer program, if any.

24.

SIGNED

William F. Clark

TITLE

Operations Manager

DATE

Oct 18, '88

(This space for Federal or State office use)

PERMIT NO.

APPROVAL DATE

APPROVED BY

TITLE

DATE

CONDITIONS OF APPROVAL, IF ANY:

APPROVED
AS AMENDED

*See Instructions On Reverse Side

APTA 10/18/88

All distances must be from the outer boundaries of the Section.

Operator Blackwood & Nichols Co., LTD.		Lease Northeast Blanco Unit		Well No. 443
Unit Letter N	Section 24	Township 30 North	Range 8 West	County San Juan
Actual Footage Location of Well: 920 feet from the South line and 2100 feet from the West line				
Ground Level Elev. 6211'	Producing Formation Fruitland Coal	Pool Basin Fruitland Coal	Dedicated Acreage: 320 Acres	

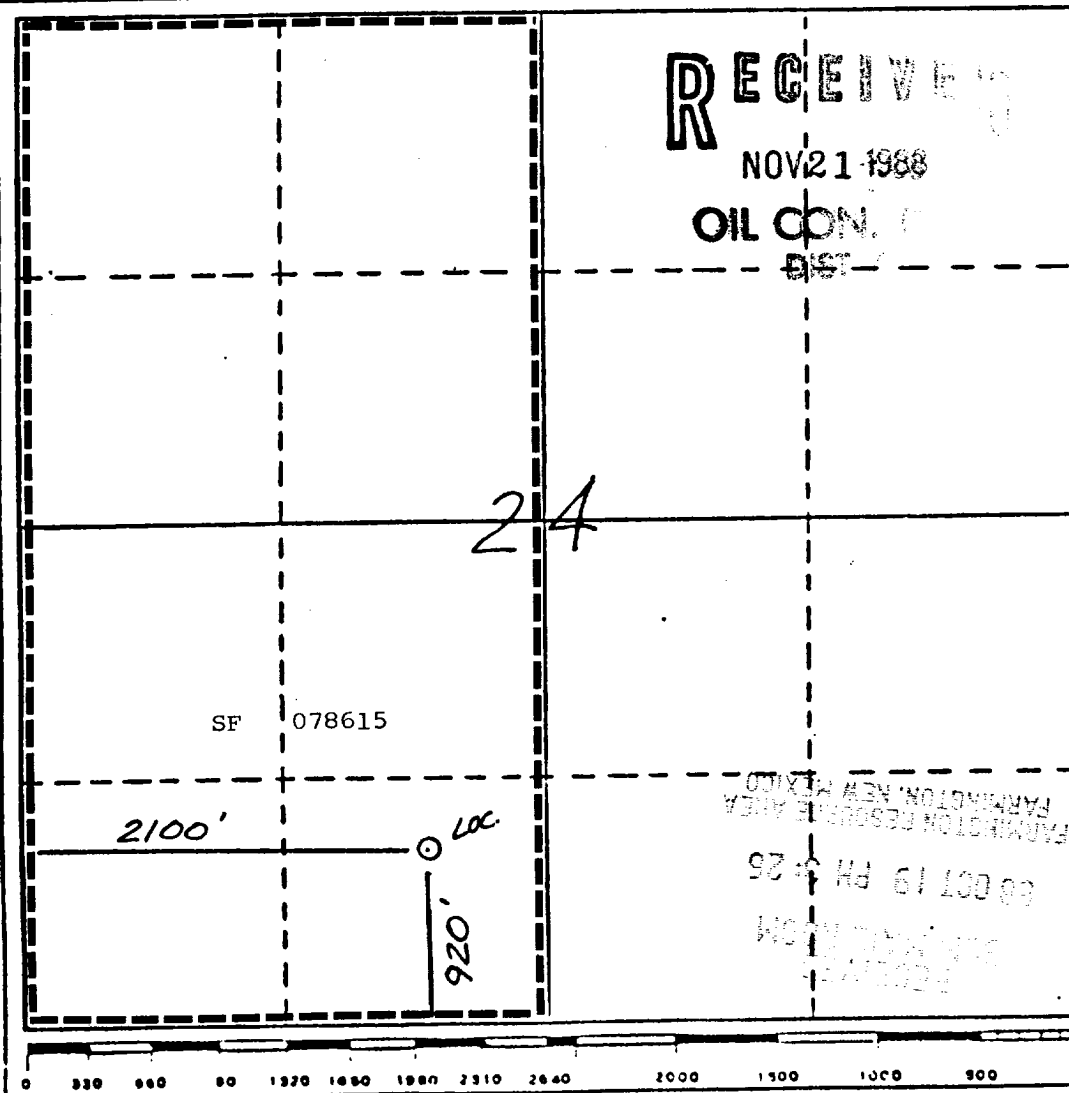
1. Outline the acreage dedicated to the subject well by colored pencil or hatchure marks on the plat below.
2. If more than one lease is dedicated to the well, outline each and identify the ownership thereof (both as to working interest and royalty).
3. If more than one lease of different ownership is dedicated to the well, have the interests of all owners been consolidated by communitization, unitization, force-pooling, etc?

☒ Yes ☐ No If answer is "yes," type of consolidation NA

If answer is "no," list the owners and tract descriptions which have actually been consolidated. (Use reverse side of this form if necessary.)

No allowable will be assigned to the well until all interests have been consolidated (by communitization, unitization, forced-pooling, or otherwise) or until a non-standard unit, eliminating such interests, has been approved by the Division.

* Note: Non-standard location due to terrain and pipelines.



CERTIFICATION

I hereby certify that the information contained herein is true and complete to the best of my knowledge and belief.

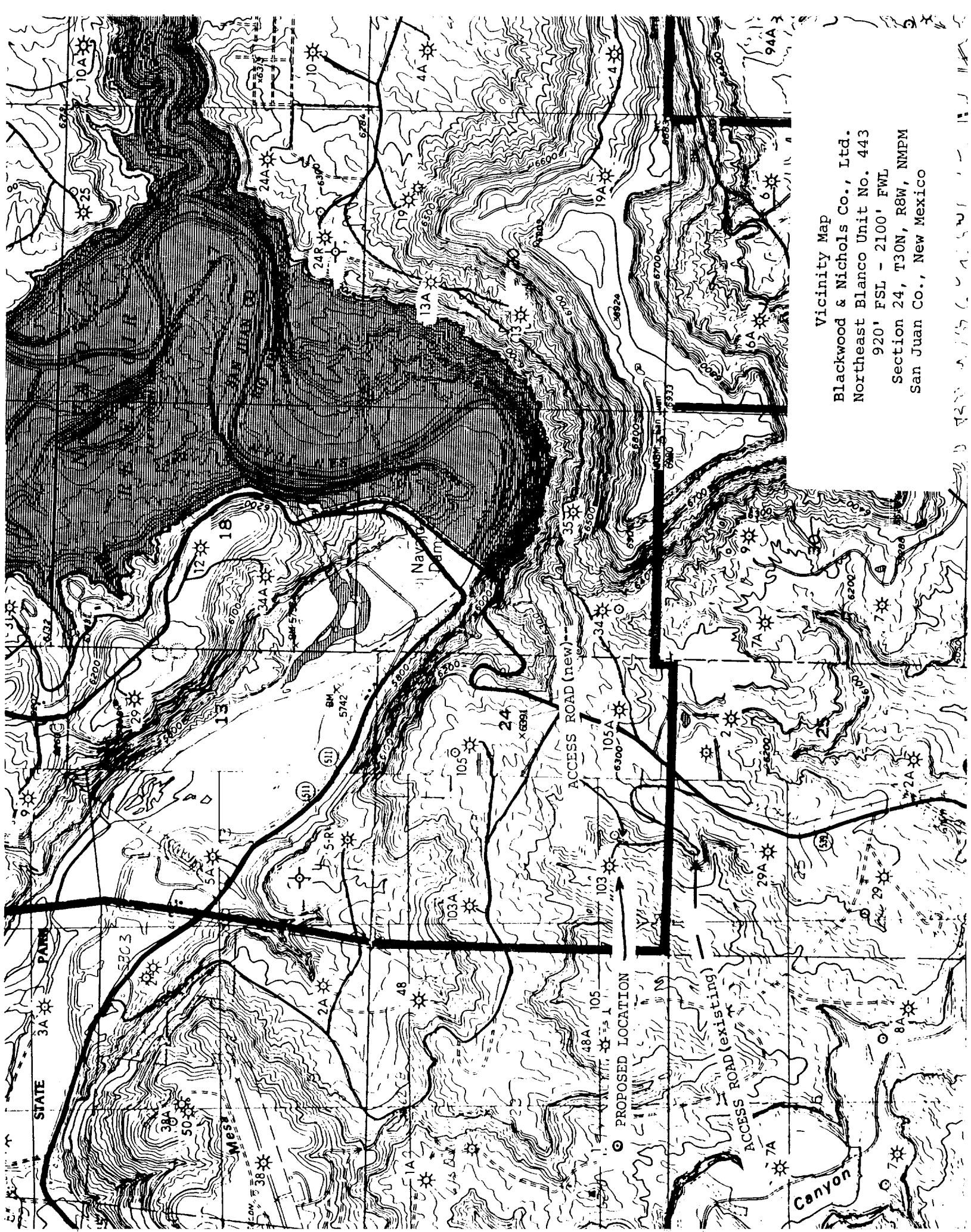
Name William F. Clark
Position Operations Manager
Company Blackwood & Nichols Co., Ltd
Date Oct 18, 1988

I hereby certify that the location shown on this plat was plotted from field notes of actual surveys made by me or under my supervision, and that the same is true and correct to the best of my knowledge and belief.

Date Surveyed 9-3-88
Registered Professional Engineer and/or Land Surveyor

Neale C. Edwards

Certificate No. 6857



Vicinity Map

Blackwood & Nichols Co., Ltd.
Northeast Blanco Unit No. 443
920' FSL - 2100' FWL
Section 24, T30N, R8W, NMPM
San Juan Co., New Mexico