

UNITED STATES
DEPARTMENT OF THE INTERIOR
BUREAU OF LAND MANAGEMENT

APPLICATION FOR PERMIT TO DRILL, DEEPEN, OR PLUG BACK

1A. TYPE OF WORK

DRILL ☒

DEEPEN ☐

PLUG BACK ☐

B. TYPE OF WELL

OIL
WELL ☐

GAS
WELL ☒

OTHER ☐

SINGLE
ZONE ☒

MULTIPLE
ZONE ☐

2. NAME OF OPERATOR

Meridian Oil Inc.

3. ADDRESS OF OPERATOR

PO Box 4289, Farmington, NM 87499

4. LOCATION OF WELL (Report location clearly and in accordance with any State requirements.)

At surface
1450'S, 1085'W

At proposed prod. zone

14. DISTANCE IN MILES AND DIRECTION FROM NEAREST TOWN OR POST OFFICE*

3 miles from Bloomfield, NM

15. DISTANCE FROM PROPOSED*
LOCATION TO NEAREST
PROPERTY OR LEASE LINE, FT.
(Also to nearest drilg. unit line, if any.)

1085'

16. NO. OF ACRES IN LEASE

465.02

17. NO. OF ACRES ASSIGNED
TO THIS WELL

W305.02

18. DISTANCE FROM PROPOSED LOCATION*
TO NEAREST WELL DRILLING COMPLETED
OR APPLIED FOR, ON THIS LEASE, FT.

800'

19. PROPOSED DEPTH

2174'

20. ROTARY OR CABLE TOOL

Rotary

21. ELEVATIONS (Show whether DF, RT, GR, etc.)

5860' GL

DRILLING OPERATIONS AUTHORIZED ARE
SUBJECT TO COMPLIANCE WITH ATTACHED

22. APPROX. DATE WORK WILL START*

23. PROPOSED CASING AND CEMENTING PROGRAM

This action is subject to technical and
procedural review pursuant to 43 CFR 3166.3
and appeal pursuant to 43 CFR 3166.4.

SIZE OF HOLE	SIZE OF CASING	WEIGHT PER FOOT	SETTING DEPTH	
12 1/4"	9 5/8"	32.3#	200'	125 cf. circulated
8 3/4"	7"	20.0#	1963'	320 cf circ. surface
6 1/4"	5 1/2" liner	15.5#	2174'	do not cement

The Fruitland coal formation will be completed.

A 3000 psi WP and 6000 psi test double gate preventer equipped with
blind and pipe rams will be used for blow out prevention on this well.

This gas is dedicated.

The W/2 of Section 1 is dedicated to this well.

RECEIVED

DEC 03 1988

LAND DIV.

IN ABOVE SPACE DESCRIBE PROPOSED PROGRAM: If proposal is to deepen or plug back, give data on present productive zone and proposed new productive zone. If proposal is to drill or deepen directionally, give pertinent data on subsurface locations and measured and true vertical depths. Give blowout preventer program, if any.

SIGNED [Signature] TITLE Regulatory Affairs DATE 12-01-88

(This space for Federal or State office use)

PERMIT NO. _____ APPROVAL DATE _____

APPROVED BY _____ TITLE _____ DATE _____
CONDITIONS OF APPROVAL, IF ANY:

RM000

*See Instructions On Reverse Side

Title 18 U.S.C. Section 1001, makes it a crime for any person knowingly and willfully to make to any department or agency of the United States any false, fictitious or fraudulent statements or representations as to any matter within its jurisdiction.

All distances must be from the outer boundaries of the Section.

Operator Meridian Oil Inc.		Lease Lloyd B		Well No. 600
Unit Letter L	Section 1	Township 29 North	Range 11 West	County San Juan
Actual Footage Location of Wells 1450 feet from the South line and 1085 feet from the West line				
Ground Level Elev. 5860'	Producing Formation Fruitland Coal	Pool Basin	Dedicated Acreage: W 305.02 Acres	

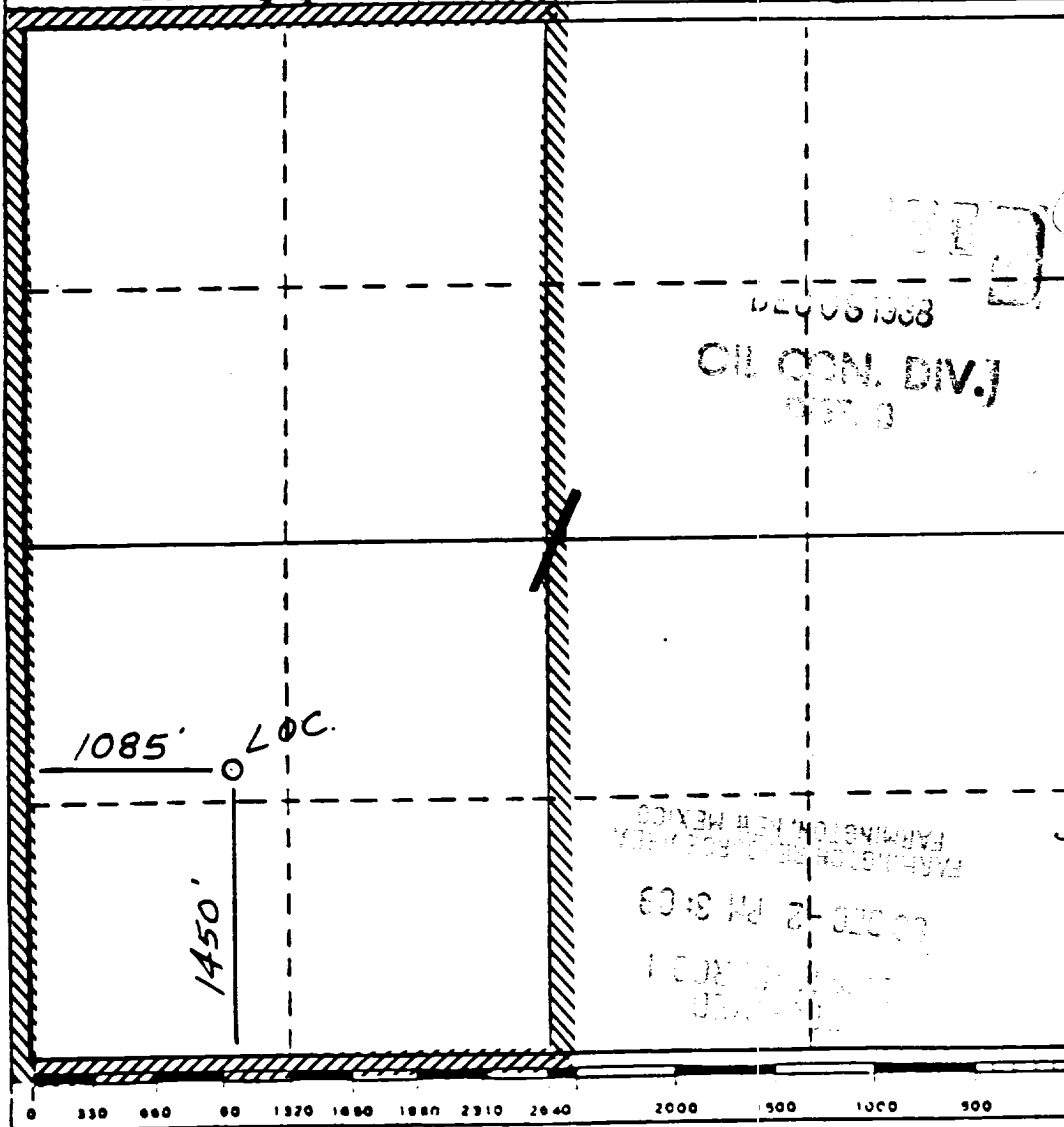
1. Outline the acreage dedicated to the subject well by colored pencil or hachure marks on the plat below.
2. If more than one lease is dedicated to the well, outline each and identify the ownership thereof (both as to working interest and royalty).
3. If more than one lease of different ownership is dedicated to the well, have the interests of all owners been consolidated by communitization, unitization, force-pooling, etc?

☐ Yes ☐ No If answer is "yes," type of consolidation _____

If answer is "no," list the owners and tract descriptions which have actually been consolidated. (Use reverse side of this form if necessary.) _____

No allowable will be assigned to the well until all interests have been consolidated (by communitization, unitization, forced-pooling, or otherwise) or until a non-standard unit, eliminating such interests, has been approved by the Division

* Note: $\frac{1}{4}$ - $\frac{1}{4}$ change due to terrain, Pipelines & Locations.



CERTIFICATION

I hereby certify that the information contained herein is true and complete to the best of my knowledge and belief.

Raymond B. Edwards
Name

Regulatory Affairs

Position
Meridian Oil Inc.

Company
12-2-88

Date

I hereby certify that the location shown on this plat was plotted from field notes of actual surveys made by me or under my supervision, and that the same is true and correct to the best of my knowledge and belief.

Neale C. Edwards
Date Surveyed

10-10-88

Registered Professional Engineer
and/or Land Surveyor

Neale C. Edwards

Certificate No. 6857

SF078161

BLM ROW

Fee Lands

Map 2

T29N, R11W

Sec 12: JWNW 1350'

11: E2E2 3450'

LLOYD B# 600

[illegible]

Topographic map of T29N, R11W, Sec 12: JWNW, 1350'. The map shows sections 9, 10, 11, 12, 13, 14, 15, and 16. A BLM ROW is marked across sections 10, 11, and 12. A Fee Lands area is marked in section 14. A path is drawn from section 12 to section 14. A large 'I' is drawn in section 12, with 'SF078161' written inside it. A 'Map 2' label is at the bottom.

Topographic map showing sections 9, 10, 11, 12, 13, 14, 15, and 16. The map includes contour lines, a grid, and various geographical features like canyons and fields. A BLM ROW is marked across sections 10, 11, and 12. A Fee Lands area is marked in section 14. A path is drawn from section 12 to section 14. A large 'I' is drawn in section 12, with 'SF078161' written vertically next to it. A 'Map 2' label is at the bottom.

BLM ROW

T29N, R11W

Sec 12: NW1/4 1350'

11: E2E2 3450'

Lloyd B#600

Map 2

Topographic map showing sections 1 through 16. The map includes contour lines, canyons (Hate, Bloomfield, Green, Fork), fields (Gas, West), and a pipeline. A thick black line outlines a specific area in the upper left, labeled 'SF078161'. A large 'X' is drawn across the map, with arrows pointing to specific locations. Handwritten text at the bottom reads 'BLM ROW', 'T29N, R11W', 'Sec 12: NWNW 1350'', '11: E2E2 3450'', and 'LLOYD B#600'. A label 'Map 2' is at the bottom center.

Topographic map showing sections 1 through 16. The map includes contour lines, canyons (Hate, Bloomfield, Green, Fork), fields (Gas, West), and a pipeline. A thick black line outlines a specific area in the upper left, labeled 'SF078161'. A large 'X' is drawn across the map, with arrows pointing to specific locations. Handwritten text at the bottom reads 'BLM ROW', 'T29N, R11W', 'Sec 12: NWNW 1350'', '11: E2E2 3450'', and 'LLOYD B#600'. A label 'Map 2' is at the bottom center.

Topographic map showing sections 1 through 16. The map includes contour lines, canyons (Hate, Bloomfield, Green, Fork), fields (Gas, West), and a pipeline. A thick black line outlines a specific area in the upper left, labeled 'SF078161'. A large 'X' is drawn across the map, with arrows pointing to specific locations. Handwritten text at the bottom reads 'BLM ROW', 'T29N, R11W', 'Sec 12: NWNW 1350'', '11: E2E2 3450'', and 'LLOYD B#600'. A label 'Map 2' is at the bottom center.

SF078161

BLM ROW

T29N, R11W

Sec 12: JWNW 1350'

11: E2E2 3450'

LLOYD B#600

Map 2

Fee Lands

Topographic map showing sections 9, 10, 11, 12, 13, 14, 15, and 16. The map includes contour lines, a grid, and various geographical features like canyons and fields. A BLM ROW is marked across sections 10, 11, and 12. A Fee Lands area is marked in section 14. A path is drawn from section 12 to section 14. A large 'I' is drawn in section 12, with 'SF078161' written vertically next to it. A 'Map 2' label is at the bottom.

BLM ROW

T29N, R11W

Sec 12: NW1/4 1350'

11: E2E2 3450'

Lloyd B#600

Map 2