

UNITED STATES  
DEPARTMENT OF THE INTERIOR  
BUREAU OF LAND MANAGEMENT

APPLICATION FOR PERMIT TO DRILL, DEEPEN, OR PLUG BACK

1a. TYPE OF WORK

DRILL ☐

DEEPEN ☒ DEC-8 AN PLUG BACK ☐

b. TYPE OF WELL

OIL  
WELL ☐

GAS  
WELL ☒

OTHER ☐

SINGLE ☐ CONCRETE ☐ PIPE ☐ ALONE ☐  
FARMINGTON, NEW MEXICO

2. NAME OF OPERATOR

Meridian Oil Inc.

3. ADDRESS OF OPERATOR

PO Box 4289, Farmington, NM 87499

4. LOCATION OF WELL (Report location clearly and in accordance with any State requirements.)

At surface  
1825'N, 1185'E

At proposed prod. zone

14. DISTANCE IN MILES AND DIRECTION FROM NEAREST TOWN OR POST OFFICE\*

5 miles from Bloomfield, NM

15. DISTANCE FROM PROPOSED\*

LOCATION TO NEAREST  
PROPERTY OR LEASE LINE, FT.  
(Also to nearest drig. unit line, if any)

1185'

16. NO. OF ACRES IN LEASE

951.80

17. NO. OF ACRES ASSIGNED

TO THIS WELL  
E/B 20.00

18. DISTANCE FROM PROPOSED LOCATION\*  
TO NEAREST WELL DRILLING COMPLETED,  
OR APPLIED FOR, ON THIS LEASE, FT.

400'

19. PROPOSED DEPTH

2094'

20. ROTARY OR CABLE TOOLS

Rotary

21. ELEVATIONS (Show whether DF, RT, GR, etc.)

5643' GL

DRILLING OPERATIONS AUTHORIZED ARE  
SUBJECT TO COMPLIANCE WITH ATTACHED

22. APPROX. DATE WORK WILL START\*

This action is subject to technical and  
procedural review pursuant to 43 CFR 3165.3  
and special pursuant to 43 CFR 3165.4.

23.

PROPOSED PROGRAM

SIZE OF HOLE	SIZE OF CASING	WEIGHT PER FOOT	SETTING DEPTH	QUANTITY OF CEMENT
12 1/4"	9 5/8"	32.3#	200'	125 cf. circulated
8 3/4"	7"	20.0#	1953'	277 cf circ. surface
6 1/4"	5 1/2" liner	15.5#	2094'	do not cement

The Fruitland coal formation will be completed.

A 3000 psi WP and 6000 psi test double gate preventer equipped with  
blind and pipe rams will be used for blow out prevention on this well.

This gas is dedicated.

The E/2 of Section 27 is dedicated to this well.

IN ABOVE SPACE DESCRIBE PROPOSED PROGRAM: If proposal is to deepen or plug back, give data on present productive zone and proposed new productive zone. If proposal is to drill or deepen directionally, give pertinent data on subsurface locations and measured and true vertical depths. Give blowout preventer program, if any.

24.

SIGNED

*John Stapp*

TITLE

Regulatory Affairs

DATE

12-06-88

(This space for Federal or State office use)

PERMIT NO.

APPROVAL DATE

"Approval of this action does

not constitute a representation

holds legal or equitable rights

or title to this lease."

TITLE

APPROVED

AS AMENDED

DEC 15 1988

NMOCC  
See Instructions On Reverse Side

*James E. Edwards*  
AREA MANAGER

Title 18 U.S.C. Section 1001, makes it a crime for any person knowingly and willfully to make to any department or agency of the United States any false, fictitious or fraudulent statements or representations as to any matter within its jurisdiction.

P. O. BOX 2088  
SANTA FE, NEW MEXICO 87501

Form C-102  
Revised 10-1-78

Operator Meridian Oil Inc.		Lease Grambling		Well No. 721
Unit Letter H	Section 27	Township 29 North	Range 9 West	County San Juan
Actual Postage Location of Wells 1825 feet from the North line and 1185 feet from the East line				
Ground Level Elev. 5643	Producing Formation FRUITLAND COAL	Pool BASIN		Dedicated Acreage: 320.00

1. Outline the acreage dedicated to the subject well by colored pencil or hatchure marks on the plat below.
2. If more than one lease is dedicated to the well, outline each and identify the ownership thereof (both as to working interest and royalty).
3. If more than one lease of different ownership is dedicated to the well, have the interests of all owners been consolidated by communitization, unitization, force-pooling, etc?

☐ Yes   ☐ No   If answer is "yes," type of consolidation \_\_\_\_\_

If answer is "no," list the owners and tract descriptions which have actually been consolidated. (Use reverse side of this form if necessary.) \_\_\_\_\_

No allowable will be assigned to the well until all interests have been consolidated (by communitization, unitization, forced-pooling, or otherwise) or until a non-standard unit, eliminating such interests, has been approved by the Division

**Survey Plat Data:**

- Top-Left Quadrant:** S-89-39-W, 39.84
- Top-Right Quadrant:** N-10-40-E, 1825'
- Bottom-Left Quadrant:** N-89-42-W, 79.17
- Bottom-Right Quadrant:** S-89°39'-W, 1185'
- Central Point:** Loc. 27

**CERTIFICATION**

I hereby certify that the information contained herein is true and complete to the best of my knowledge and belief.

Name: Neale C. Edwards

Position: Regulatory Off.

Company: 12-8-88

Date: 12-8-88

**NEALE C. EDWARDS**

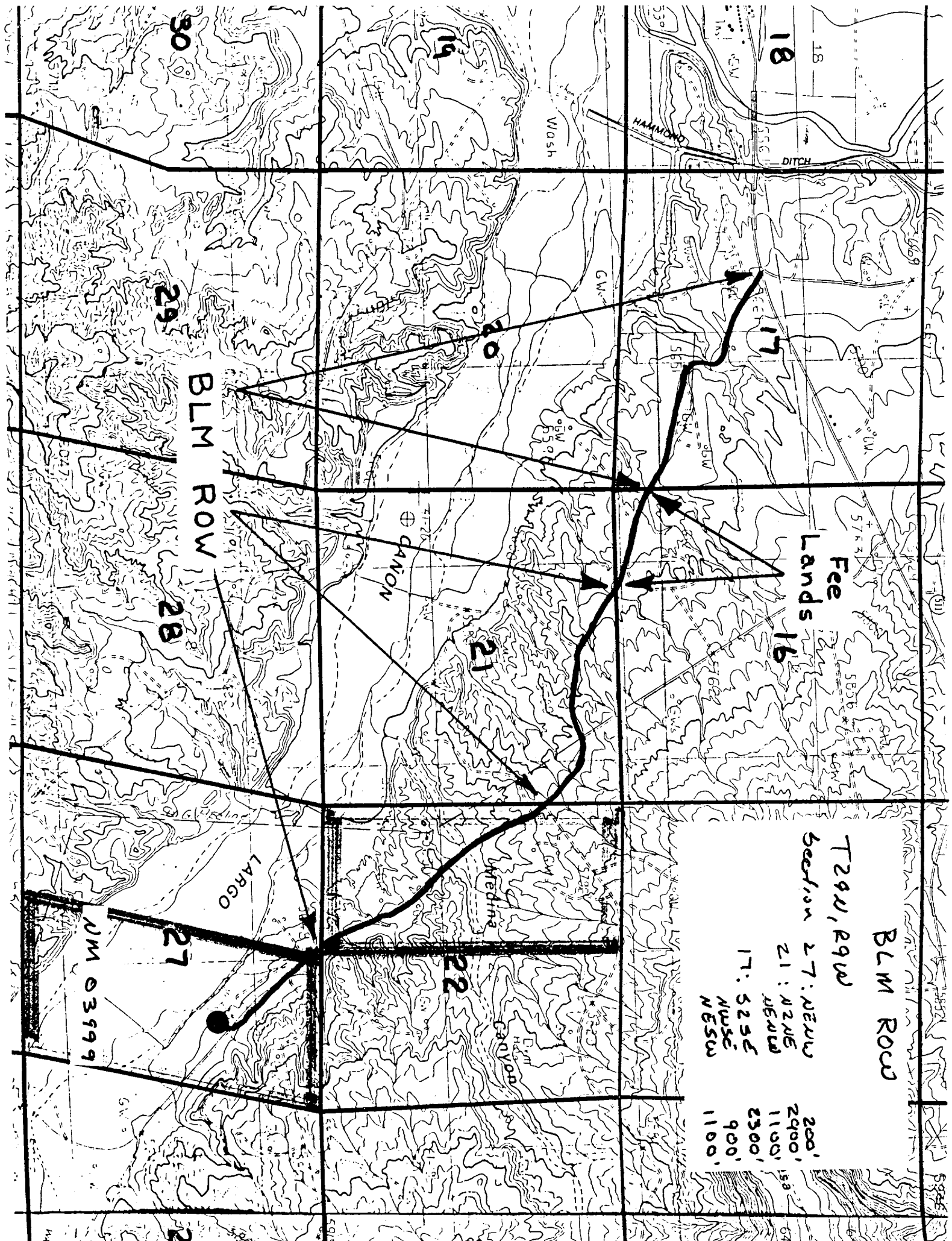
I hereby certify that the location shown on this plat was plotted from field notes of actual surveys made by me or under my supervision, and that the same is true and correct to the best of my knowledge and belief.

Date Surveyed: 10-9-88

Registered Professional Engineer and/or Land Surveyor:

Neale C. Edwards

Certificate No. 6857



BLM ROW

T29N, R9W

Section 27: NE NW

21: N2NE

17: S2SE

NWSE

200'

2400'

1100'

2300'

900'

1100'

NM 03999