

UNITED STATES  
DEPARTMENT OF THE INTERIOR  
BUREAU OF LAND MANAGEMENT

APPLICATION FOR PERMIT TO DRILL, DEEPEN, OR PLUG BACK

1a. TYPE OF WORK

DRILL ☒

DEEPEN ☐

PLUG BACK ☐

b. TYPE OF WELL

OIL  
WELL ☐

GAS  
WELL ☒

OTHER ☐

2. NAME OF OPERATOR

Meridian Oil Inc.

3. ADDRESS OF OPERATOR

PO Box 4289, Farmington, NM 87499

4. LOCATION OF WELL (Report location clearly and in accordance with any State requirements.)

At 790' N, 1830' E

At proposed prod. zone

14. DISTANCE IN MILES AND DIRECTION FROM NEAREST TOWN OR POST OFFICE\*

8 miles from Blanco, NM

15. DISTANCE FROM PROPOSED\*

LOCATION TO NEAREST  
PROPERTY OR LEASE LINE, FT.  
(Also to nearest drig. unit line, if any)

790'

16. DISTANCE FROM PROPOSED LOCATION\*  
TO NEAREST WELL, DRILLING, COMPLETED,  
OR APPLIED FOR, ON THIS LEASE, FT.

600'

21. ELEVATIONS (Show whether DF, RT, GR, etc.)

5627' GL

18. NO. OF ACRES IN LEASE

951.80

19. PROPOSED DEPTH

2044'

17. NO. OF ACRES ASSIGNED  
TO THIS WELL

E/320.00

20. ROTARY OR CABLE TOOLS

Rotary

22. APPROX. DATE WORK WILL START\*

PROPOSED CASING AND CEMENTING PROGRAM

| SIZE OF HOLE | SIZE OF CASING | WEIGHT PER FOOT | SETTING DEPTH |
|--------------|----------------|-----------------|---------------|
| 12 1/4"      | 9 5/8"         | 32.3#           | 200'          |
| 8 3/4"       | 7"             | 20.0#           | 1902'         |
| 6 1/4"       | 5 1/2" liner   | 15.5#           | 2044'         |

This action is subject to technical and  
procedural review pursuant to 43 CFR 3160.3  
and appeal pursuant to 43 CFR 3160.4.

125 cf. circulated  
290 cf. circ. surface  
do not cement

The Fruitland coal formation will be completed.

A 3000 psi WP and 6000 psi test double gate preventer equipped with  
blind and pipe rams will be used for blow out prevention on this well.

This gas is dedicated.

The E/2 of Section 28 is dedicated to this well.

RECEIVED  
DEC 1 8 1983

OR. CON. DIV.  
BBL 2

IN ABOVE SPACE DESCRIBE PROPOSED PROGRAM: If proposal is to deepen or plug back, give data on present productive zone and proposed new productive zone. If proposal is to drill or deepen directionally, give pertinent data on subsurface locations and measured and true vertical depths. Give blowout preventer program, if any.

24.

SIGNED

(This space for Federal or State office use)

TITLE

Regulatory Affairs

DATE

12-01-88

PERMIT NO.

APPROVAL DATE

APPROVED BY

CONDITIONS OF APPROVAL, IF ANY:

TITLE

DATE

\*See Instructions On Reverse Side

Title 18 U.S.C. Section 1001, makes it a crime for any person knowingly and willfully to make to any department or agency of the United States any false, fictitious or fraudulent statements or representations as to any matter within its jurisdiction.

All distances must be from the outer boundaries of the Section.

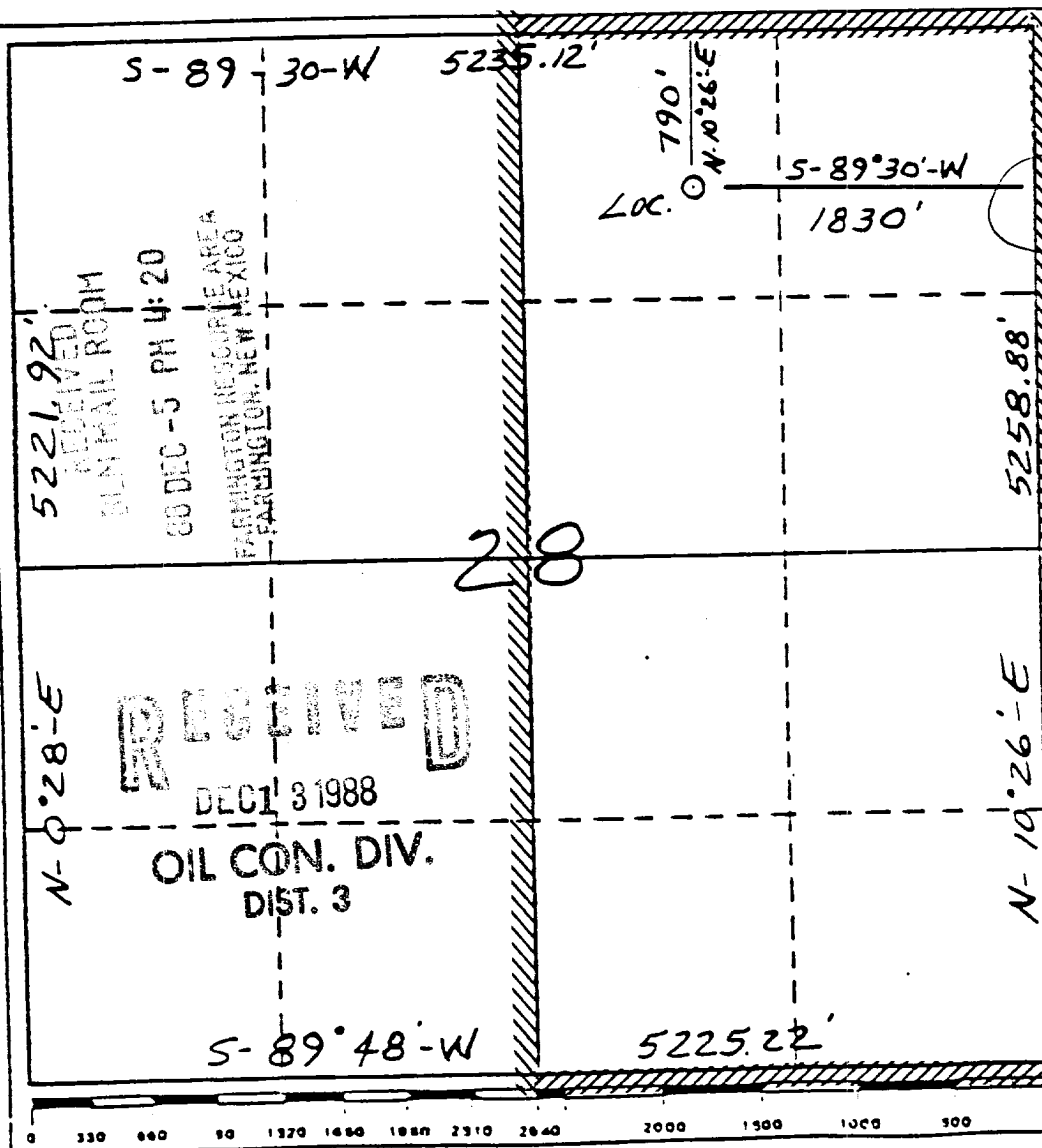
|   |  |                                     |                        |                                       |  |
|---|--|-------------------------------------|------------------------|---------------------------------------|--|
| Operator<br><b>Meridian Oil Inc.</b>  |  | Lease<br><b>Grambling(NM-03999)</b> |                        | Well No.<br><b>722</b>                |  |
| Unit Letter<br><b>B</b>   | Section<br><b>28</b>                         | Township<br><b>29 North</b>         | Range<br><b>9 West</b> | County<br><b>San Juan</b>             |  |
| Actual Footage Location of Wells<br><b>790</b> feet from the <b>North</b> line and <b>1830</b> feet from the <b>East</b> line |  |                                     |                        |                                       |  |
| Ground Level Elev.<br><b>5627</b>   | Producing Formation<br><b>Fruitland Coal</b> |                                     | Pool<br><b>Basin</b>   | Dedicated Acreage:<br><b>320</b> Act- |  |

1. Outline the acreage dedicated to the subject well by colored pencil or hatchure marks on the plat below.
2. If more than one lease is dedicated to the well, outline each and identify the ownership thereof (both as to working interest and royalty).
3. If more than one lease of different ownership is dedicated to the well, have the interests of all owners been consolidated by communitization, unitization, force-pooling, etc?

☐ Yes ☐ No If answer is "yes," type of consolidation \_\_\_\_\_

If answer is "no," list the owners and tract descriptions which have actually been consolidated. (Use reverse side this form if necessary.) \_\_\_\_\_

No allowable will be assigned to the well until all interests have been consolidated (by communitization, unitization, forced-pooling, or otherwise) or until a non-standard unit, eliminating such interests, has been approved by the Division.



CERTIFICATION

I hereby certify that the information contained herein is true and complete to the best of my knowledge and belief.

*[Signature]*  
Name \_\_\_\_\_

Regulatory Affairs

Position  
Meridian Oil Inc.

Company  
*12-2-88*

Date

I hereby certify that the well location shown on this plat was plotted from the notes of actual surveys made by me under my supervision, and that the same is true and correct to the best of my knowledge and belief.

*[Signature]*  
Date Surveyed  
**10-3-88**

Registered Professional Engineer and/or Land Surveyor

**Neale C. Edwards**

Certificate No.

**6267**

K-9-W  
T-29-N

17

16

15

14

20

21

22

23

CANON

Medina

Canyon

50

LARGO

GRAMBLING

26

29

28

27

722

32

33

34

35