

UNITED STATES
DEPARTMENT OF THE INTERIOR
BUREAU OF LAND MANAGEMENT

APPLICATION FOR PERMIT TO DRILL, DEEPEN, OR PLUG BACK

1a. TYPE OF WORK
DRILL ☒ DEEPEN ☐ PLUG BACK ☐

b. TYPE OF WELL
OIL WELL ☐ GAS WELL ☒ OTHER ☐

2. NAME OF OPERATOR
Southland Royalty Company

3. ADDRESS OF OPERATOR
PO Box 4289, Farmington, NM 87499

4. LOCATION OF WELL (Report location clearly and in accordance with any State requirements.)
At surface 1070'N, 1290'E
At proposed prod. zone 1070'

14. DISTANCE IN MILES AND DIRECTION FROM NEAREST TOWN OR POST OFFICE*
8 miles from Blanco, NM

15. DISTANCE FROM PROPOSED*
LOCATION TO NEAREST
PROPERTY OR LEASE LINE, FT.
(Also to nearest drig. unit line, if any)
1070'

16. NO. OF ACRES IN LEASE
915.29

17. NO. OF ACRES ASSIGNED
TO THIS WELL
293.29

18. DISTANCE FROM PROPOSED LOCATION*
TO NEAREST WELL DRILLING COMPLETED
OR APPLIED FOR, ON THIS LEASE, FT.
2500'

19. PROPOSED DEPTH
2393'

20. ROTARY OR CABLE TOOLS
Rotary

21. ELEVATIONS (Show whether D.F., R.T., G.R., etc.)
5935' GL

DRILLING OPERATIONS AUTHORIZED ARE
SUBJECT TO COMPLIANCE WITH ATTACHED

22. APPROX. DATE WORK WILL START*

PROPOSED CASING AND CEMENTING PROGRAM					This action is subject to technical and procedural review pursuant to 43 CFR 3165.2 and appeal pursuant to 43 CFR 3165.4.
SIZE OF HOLE	SIZE OF CASING	WEIGHT PER FOOT	SETTING DEPTH		
12 1/4"	9 5/8"	32.3#	200'	125 cf. circulated	
8 3/4"	7"	20.0#	2368'	392 cf circ. surface	
6 1/4"	5 1/2" liner	15.5#	2393'	do not cement	

The Fruitland coal formation will be completed.

A 3000 psi WP and 6000 psi test double gate preventer equipped with
blind and pipe rams will be used for blow out prevention on this well.

This gas is dedicated.

The N/2 of Section 4 is dedicated to this well.

RECEIVED
JAN 23 1989
OIL CON. DIV.
DIST. 3

(IN ABOVE SPACE DESCRIBE PROPOSED PROGRAM: If proposal is to deepen or plug back, give data on present productive zone and proposed new productive zone. If proposal is to drill or deepen directionally, give pertinent data on subsurface locations and measured and true vertical depths. Give blowout preventer program, if any.)

24. SIGNER [Signature] TITLE Regulatory Affairs DATE 12-15-88

(This space for Federal or State office use)

PERMIT NO. _____ APPROVAL DATE _____

APPROVED BY _____ TITLE AS AMENDED

CONDITIONS OF APPROVAL, IF ANY:

NMOCC

*See Instructions On Reverse Side

All distances must be from the outer boundaries of the Section.

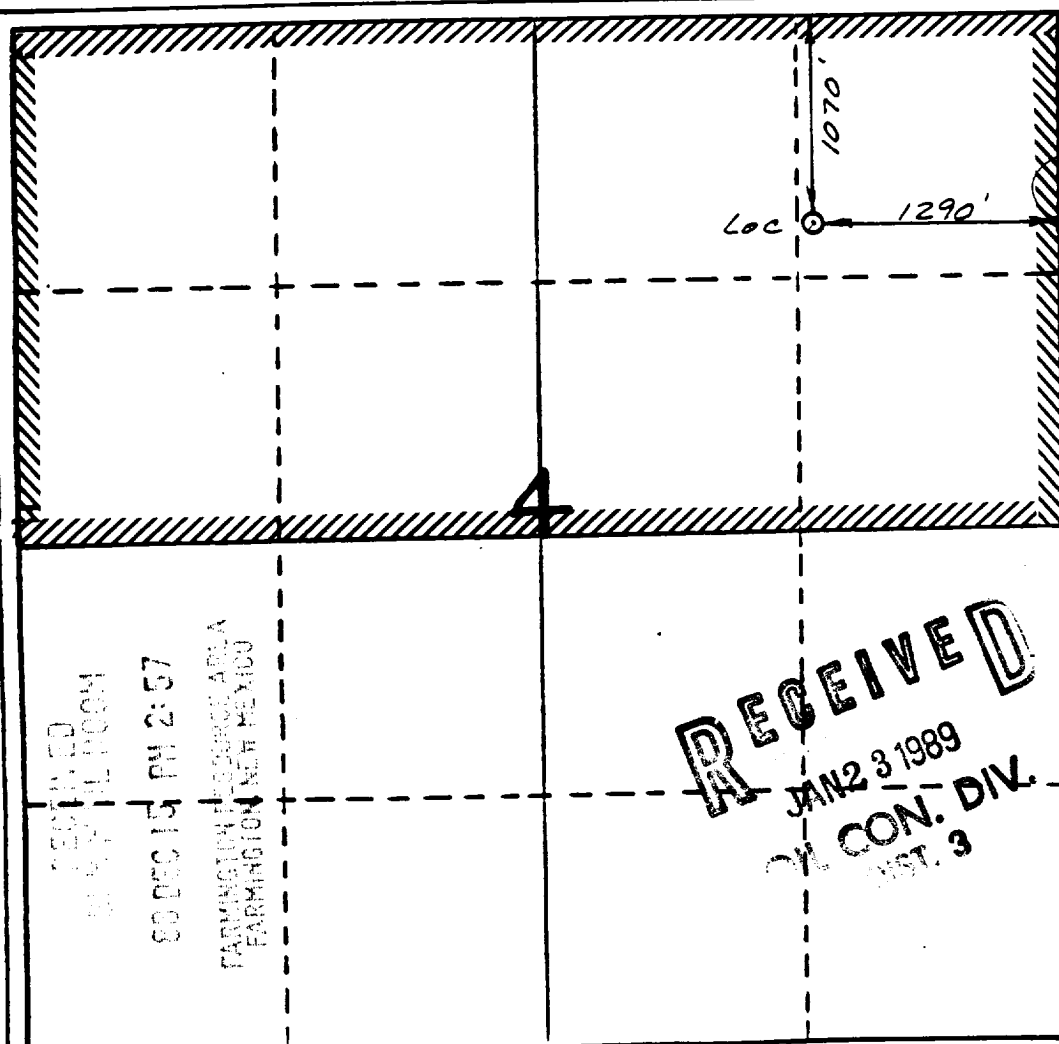
Operator Southland Royalty Company			Lease Grenier B (NM-03561)		Well No. 290
Unit Letter A	Section 4	Township 29 North	Range 10 West	County San Juan	
Actual Footage Location of Wells 1070 feet from the North line and 1290 feet from the East line					
Ground Level Elev. 5935'	Producing Formation Fruitland Coal		Pool Basin		Dedicated Acreage: 293.29 Acres

1. Outline the acreage dedicated to the subject well by colored pencil or hachure marks on the plat below.
2. If more than one lease is dedicated to the well, outline each and identify the ownership thereof (both as to working interest and royalty).
3. If more than one lease of different ownership is dedicated to the well, have the interests of all owners been consolidated by communitization, unitization, force-pooling, etc?

☐ Yes ☐ No If answer is "yes," type of consolidation _____

If answer is "no," list the owners and tract descriptions which have actually been consolidated. (Use reverse side of this form if necessary.) _____

No allowable will be assigned to the well until all interests have been consolidated (by communitization, unitization, forced-pooling, or otherwise) or until a non-standard unit, eliminating such interests, has been approved by the Division



CERTIFICATION

I hereby certify that the information contained herein is true and complete to the best of my knowledge and belief.

Name
Regulatory Affairs
Position
Southland Royalty Co.
Company

Date
12-15-88

Date

I hereby certify that the well location shown on this plat was plotted from field notes of actual surveys made by me or under my supervision, and that the same is true and correct to the best of my knowledge and belief.

Date Surveyed
11/26/88

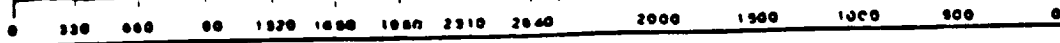
Registered Professional Engineer and/or Land Surveyor

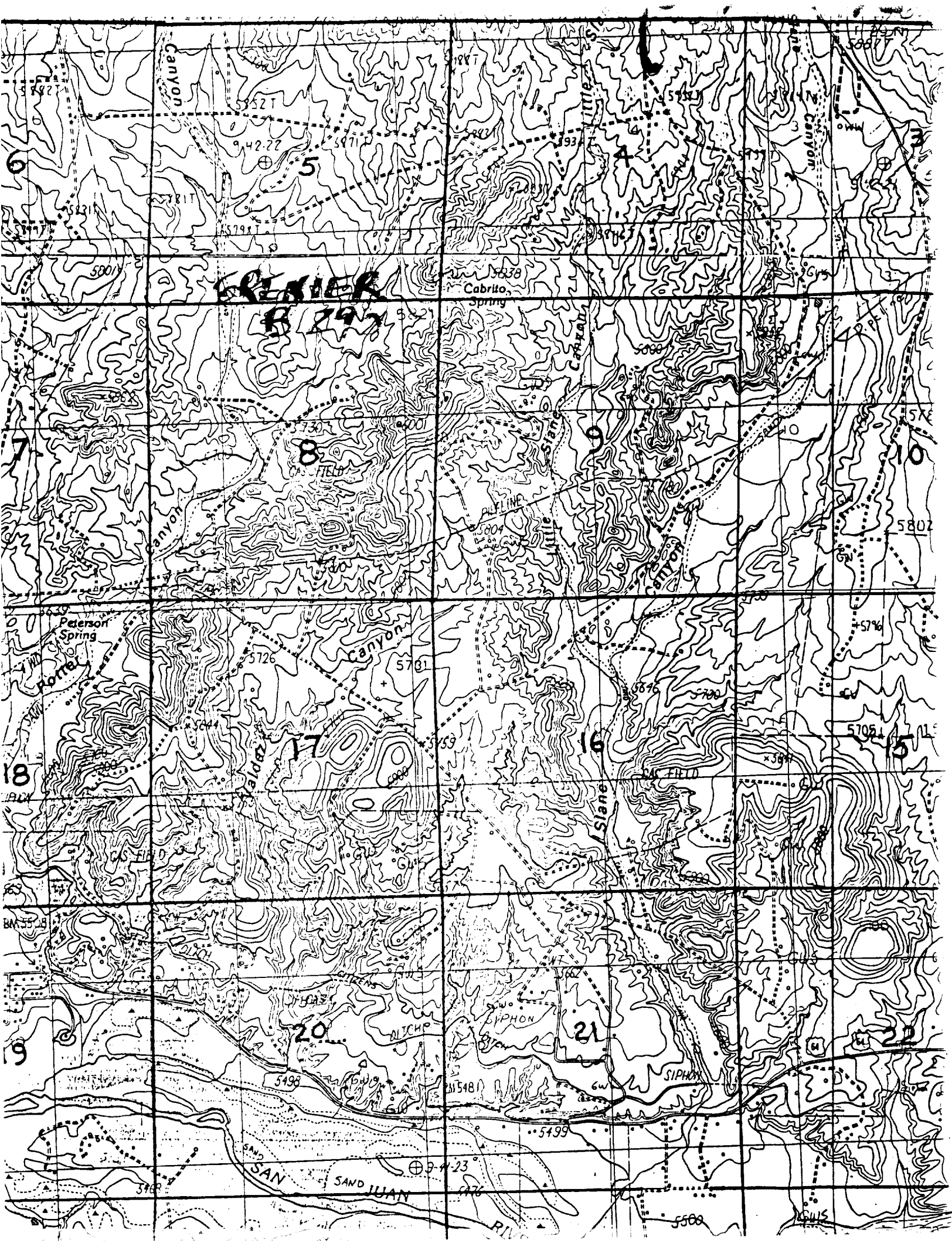
Neale C. Edwards

Certificate No.
6857

RECEIVED
JAN 23 1989
Oil CON. DIV.
Dist. 3

RECEIVED
60 DEC 15 PM 2:57
FARMINGTON RESOURCE AREA
FARMINGTON NEW MEXICO





Granite B #10
F-4-29N-1005

2179-2211