

Submit to Appropriate
District Office
State Lease - 6 copies
Fee Lease - 5 copies

State of New Mexico
Energy, Minerals and Natural Resources Department

Form C-101
Revised 1-1-89

OIL CONSERVATION DIVISION

P.O. Box 2088
Santa Fe, New Mexico 87504-2088

DISTRICT I
P.O. Box 1980, Hobbs, NM 88240

DISTRICT II
P.O. Drawer DD, Artesia, NM 88210

DISTRICT III
1000 Rio Brazos Rd., Aztec, NM 87410

API NO. (assigned by OCD on New Wells)

5. Indicate Type of Lease

STATE ☐

FEE ☒

6. State Oil & Gas Lease No.

APPLICATION FOR PERMIT TO DRILL, DEEPEN, OR PLUG BACK

1a. Type of Work:

DRILL ☒

RE-ENTER ☐

DEEPEN ☐

PLUG BACK ☐

b. Type of Well:

OIL
WELL ☐

GAS
WELL ☒

OTHER

SINGLE
ZONE ☐

MULTIPLE
ZONE ☐

7. Lease Name or Unit Agreement Name

Albright

2. Name of Operator

Union Texas Petroleum Corporation-Attn: Ken White

8. Well No.

20

3. Address of Operator

P.O. Box 2120, Houston, Texas 77252-2120

9. Pool name or Wildcat

Otero Chacra

4. Well Location

Unit Letter H : 2205 Feet From The North Line and 825 Feet From The East Line

Section 27

Township 29N

Range 10W

NMPM

County SF

10. Proposed Depth

3045

11. Formation

Chacra

12. Rotary or C.T.

Rotary

13. Elevations (Show whether DF, RT, GR, etc.)

5502 GL

14. Kind & Status Plug. Bond

Blanket

15. Drilling Contractor

To be selected

16. Approx. Date Work will start

05/15/89

17.

PROPOSED CASING AND CEMENT PROGRAM

SIZE OF HOLE	SIZE OF CASING	WEIGHT PER FOOT	SETTING DEPTH	SACKS OF CEMENT	EST. TOP
12-1/4	8-5/8	24	350	260	Surf
6-1/4	2-7/8	6.5	3045	590	Surf

Union Texas Petroleum wishes to advise we intend to drill a 12-1/4" hole to 350'. Set 8-5/8", 24.0#, K-55, ST&C csg to 350', cementing to surface with 260 sx (307 cu.ft.) C1 "B" with 2% CaCl2 and 1/4# flocele/sk. Wait on cement 12 hours. Nipple up & test BOP. Drill 6-1/4" hole out of surface to 3045'. Log well. If commercial production is indicated, set 2-7/8", 6.5#, J-55 csg to 3045', cementing to surface with 590 sx (926 cu.ft.) 50/50 poz cibaubug 4% gel and 6-1/4# gilsonite/sk. Perforate pay section in Chacra. Fracture stimulate. *Containing?*

An unorthodox location approval has been obtained.

APPROVAL EXPIRES 1-17-89
UNLESS DRILLING IS COMMENCED.
SPUD NOTICE MUST BE SUBMITTED
WITHIN 10 DAYS

RECEIVED
JAN 16 1989
OIL CON. DIV.

IN ABOVE SPACE DESCRIBE PROPOSED PROGRAM: IF PROPOSAL IS TO DEEPEN OR PLUG BACK, GIVE DATA ON PRESENT PRODUCTIVE ZONE AND PROPOSED NEW PRODUCTIVE ZONE. GIVE BLOWOUT PREVENTER PROGRAM, IF ANY.

I hereby certify that the information above is true and complete to the best of my knowledge and belief.

SIGNATURE

Ken White

TITLE

Reg. Permit Coordinator

DATE

01/10/89

TYPE OR PRINT NAME

TELEPHONE NO.

(This space for State Use)

APPROVED BY

Emilio Burch

TITLE

DEPUTY OIL & GAS INSPECTOR, DIST. #3

DATE

JAN 16 1989

CONDITIONS OF APPROVAL, IF ANY:

Hold C-109 For average Consolidation

MSL 2490

All distances must be from the outer boundaries of the Section.

Operator UNION TEXAS PETROLEUM CORP			Lease ALBRIGHT		Well No. 20
Unit Letter H	Section 27	Township 29N	Range 10W	County San Juan	
Actual Postage Location of Wells					
2205 feet from the North line and		825 feet from the East line			
Ground Level Elev. 5502	Producing Formation Chacra	Pool Otero	Dedicated Acreage NW 1/4 160.33 Acres		

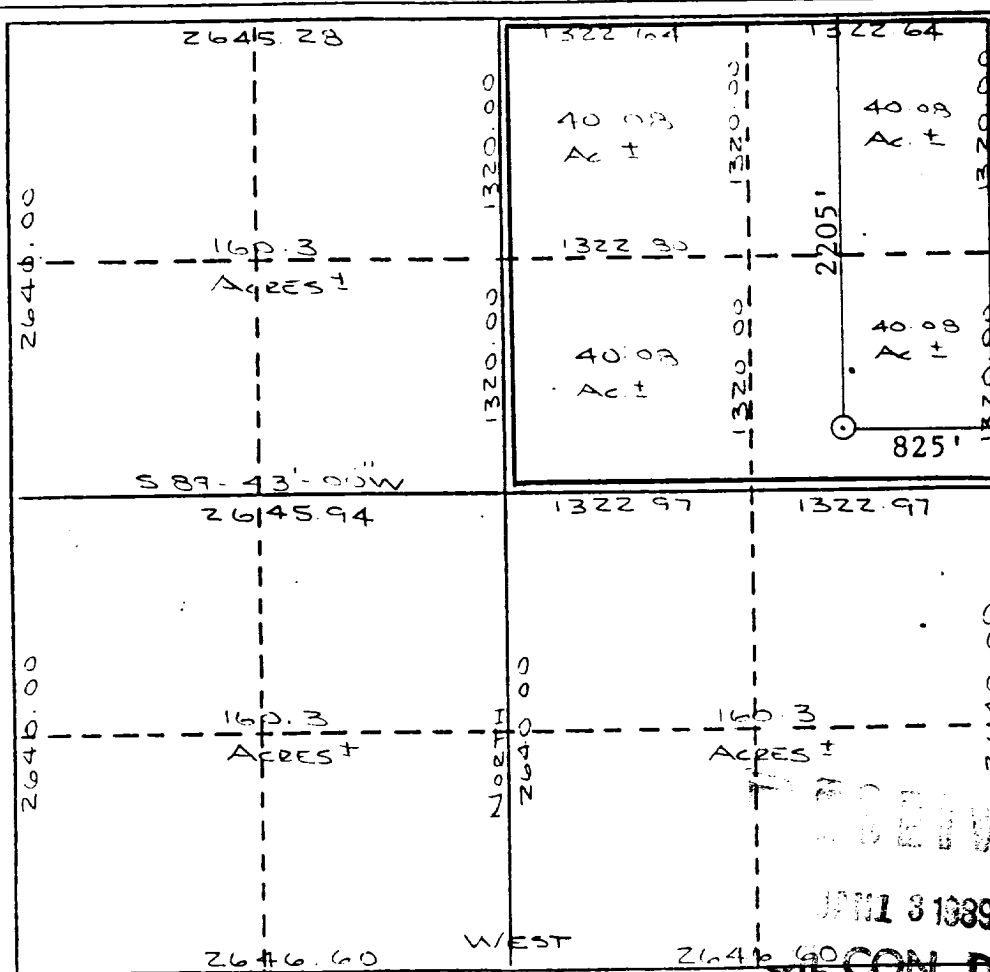
1. Outline the acreage dedicated to the subject well by colored pencil or hatchure marks on the plat below.
2. If more than one lease is dedicated to the well, outline each and identify the ownership thereof (both as to working interest and royalty).
3. If more than one lease of different ownership is dedicated to the well, have the interests of all owners been consolidated by communitization, unitization, force-pooling, etc?

☒ Yes ☐ No If answer is "yes," type of consolidation To be Communitized

If answer is "no," list the owners and tract descriptions which have actually been consolidated. (Use reverse side of this form if necessary.)

No allowable will be assigned to the well until all interests have been consolidated (by communitization, unitization forced-pooling, or otherwise) or until a non-standard unit, eliminating such interests, has been approved by the Division

S 89° - 43' - 00" W



CERTIFICATION

I hereby certify that the information contained herein is true and complete to the best of my knowledge and belief.

Robert C. Frank

Name
Robert C. Frank

Position
Permit Coordinator

Company
Union Texas Petroleum

Date
March 3, 1988

I hereby certify that the well location shown on this plat was plotted from field notes of a duly licensed land surveyor under my supervision, and that the same is true and correct to the best of my knowledge and belief.

Cecil B. Tullis

Date Surveyed
January 23, 1988

Registered Land Surveyor

Cecil B. Tullis

Certificate No.
9672

JAN 13 1989

OIL CON. DIV.

DIST. 3

