

UNITED STATES  
DEPARTMENT OF THE INTERIOR  
BUREAU OF LAND MANAGEMENT

APPLICATION FOR PERMIT TO DRILL, DEEPEN, OR PLUG BACK

1A. TYPE OF WORK

DRILL ☒

DEEPEN ☐

PLUG BACK ☐

B. TYPE OF WELL

OIL  
WELL ☐

GAS  
WELL ☒

OTHER

FARMINGTON RESOURCE AREA  
FARMINGTON, NEW MEXICO

MULTIPLE  
ZONE ☐

2. NAME OF OPERATOR

Meridian Oil Inc.

3. ADDRESS OF OPERATOR

PO Box 4289, Farmington, NM 87499

4. LOCATION OF WELL (Report location clearly and in accordance with any State requirements.)

At surface  
1470'S, 1510'W

At proposed prod. zone

14. DISTANCE IN MILES AND DIRECTION FROM NEAREST TOWN OR POST OFFICE\*

5 miles from Bloomfield, NM

15. DISTANCE FROM PROPOSED\*

LOCATION TO NEAREST  
PROPERTY OR LEASE LINE, FT.  
(Also to nearest drig. unit line, if any)

1470'

16. NO. OF ACRES IN LEASE

1504.90

17. NO. OF ACRES ASSIGNED

TO THIS WELL  
W/312.94

18. DISTANCE FROM PROPOSED LOCATION\*  
TO NEAREST WELL, DRILLING, COMPLETED,  
OR APPLIED FOR, ON THIS LEASE, FT.

400'

19. PROPOSED DEPTH

2182'

20. ROTARY OR CABLE TOOLS

Rotary

21. ELEVATIONS (Show whether OF, AT, OR, etc.)

5810'GL

DRILLING OPERATIONS AUTHORIZED ARE  
SUBJECT TO COMPLIANCE WITH ATTACHED  
"GENERAL REQUIREMENTS"

22. APPROX. DATE WORK WILL START\*

This action is subject to technical and  
procedural review pursuant to 43 CFR 3165.3  
and appeal pursuant to 43 CFR 3165.4.  
QUANTITY OF CEMENT

SIZE OF HOLE	SIZE OF CASING	WEIGHT PER FOOT	SETTING DEPTH	QUANTITY OF CEMENT
12 1/4"	9 5/8"	32.3#	200'	125 cf. circulated
8 3/4"	7"	20.0#	2182'	381 cf circ. surface
6 1/4"	5 1/2" liner	15.5#	2182'	do not cement

The Fruitland coal formation will be completed.

A 3000 psi WP and 6000 psi test double gate preventer equipped with blind and pipe rams will be used for blow out prevention on this well.

This gas is dedicated.

The W/2 of Section 8 is dedicated to this well.

RECEIVED  
JAN 30 1989  
OIL CON. DIV  
DIST. 3

IN ABOVE SPACE DESCRIBE PROPOSED PROGRAM: If proposal is to deepen or plug back, give data on present productive zone and proposed new productive zone. If proposal is to drill or deepen directionally, give pertinent data on subsurface locations and measured and true vertical depths. Give blowout preventer program, if any.

24.

SIGNED

*[Signature]*

TITLE

Regulatory Affairs DATE 01-23-89

(This space for Federal or State office use)

PERMIT NO.

APPROVAL DATE

APPROVED BY

TITLE

DATE

CONDITIONS OF APPROVAL, IF ANY:

NMOCC

\*See Instructions On Reverse Side

All distances must be from the outer boundaries of the Section.

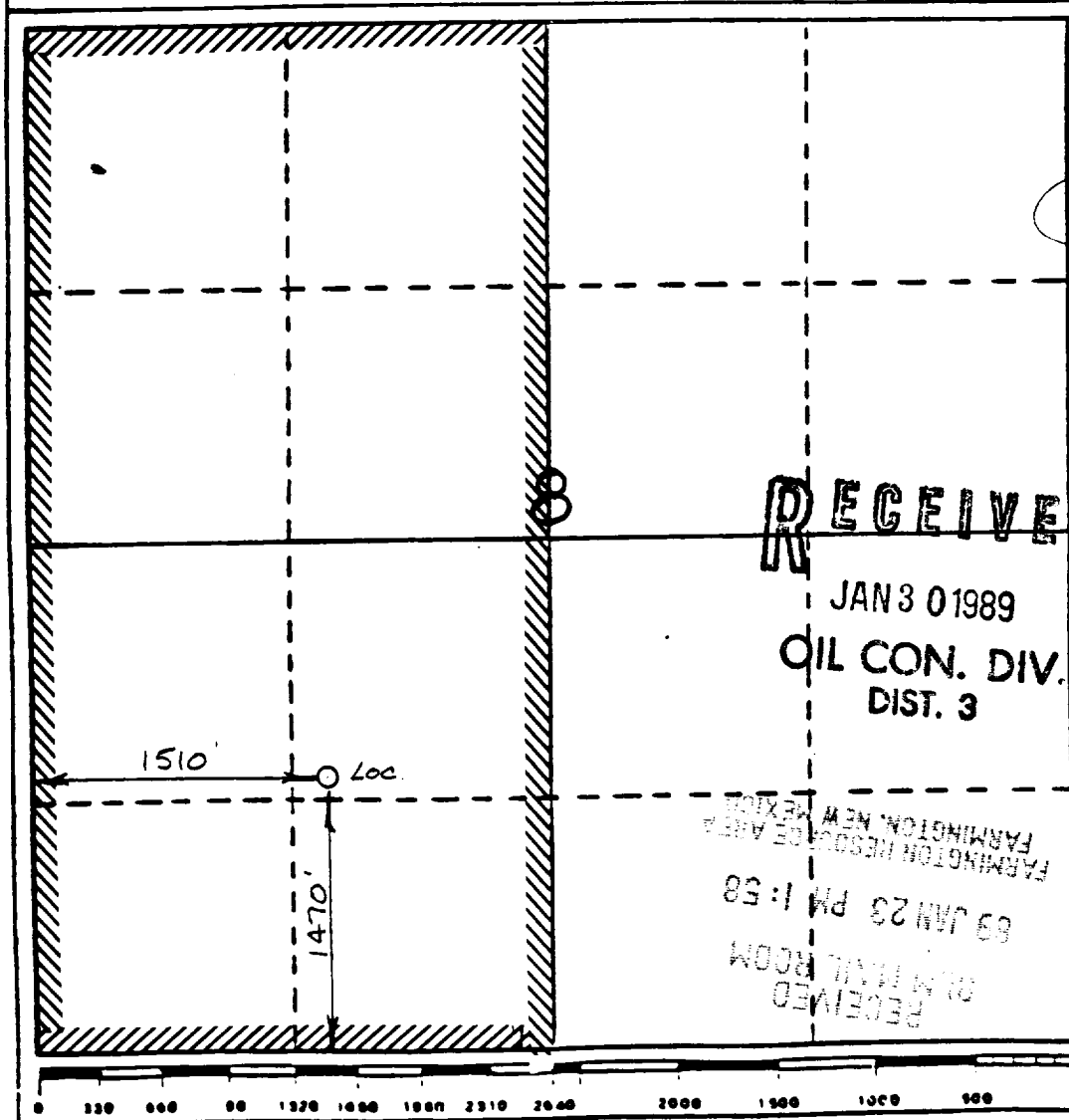
Operator <b>Meridian Oil Inc.</b>			Lease <b>Nye (SF-078197)</b>		Well No. <b>291</b>
Unit Letter <b>K</b>	Section <b>8</b>	Township <b>29 North</b>	Range <b>10 West</b>	County <b>San Juan</b>	
Actual Footage Location of Wells <b>1470'</b> feet from the <b>South</b> line and <b>1510'</b> feet from the <b>West</b> line					
Ground Level Elev. <b>5810</b>	Producing Formation <b>Fruitland Coal</b>		Pool <b>Basin</b>		Dedicated Acreage: <b>312.94</b> Acres

1. Outline the acreage dedicated to the subject well by colored pencil or hatchure marks on the plat below.
2. If more than one lease is dedicated to the well, outline each and identify the ownership thereof (both as to working interest and royalty).
3. If more than one lease of different ownership is dedicated to the well, have the interests of all owners been consolidated by communitization, unitization, force-pooling, etc?

☐ Yes ☐ No If answer is "yes," type of consolidation \_\_\_\_\_

If answer is "no," list the owners and tract descriptions which have actually been consolidated. (Use reverse side of this form if necessary.) \_\_\_\_\_

No allowable will be assigned to the well until all interests have been consolidated (by communitization, unitization, forced-pooling, or otherwise) or until a non-standard unit, eliminating such interests, has been approved by the Division.



CERTIFICATION

I hereby certify that the information contained herein is true and complete to the best of my knowledge and belief.

Name  
Regulatory Affairs

Position  
Meridian Oil Inc.

Company  
1-23-89

Date

RECEIVED  
JAN 30 1989  
OIL CON. DIV.  
DIST. 3

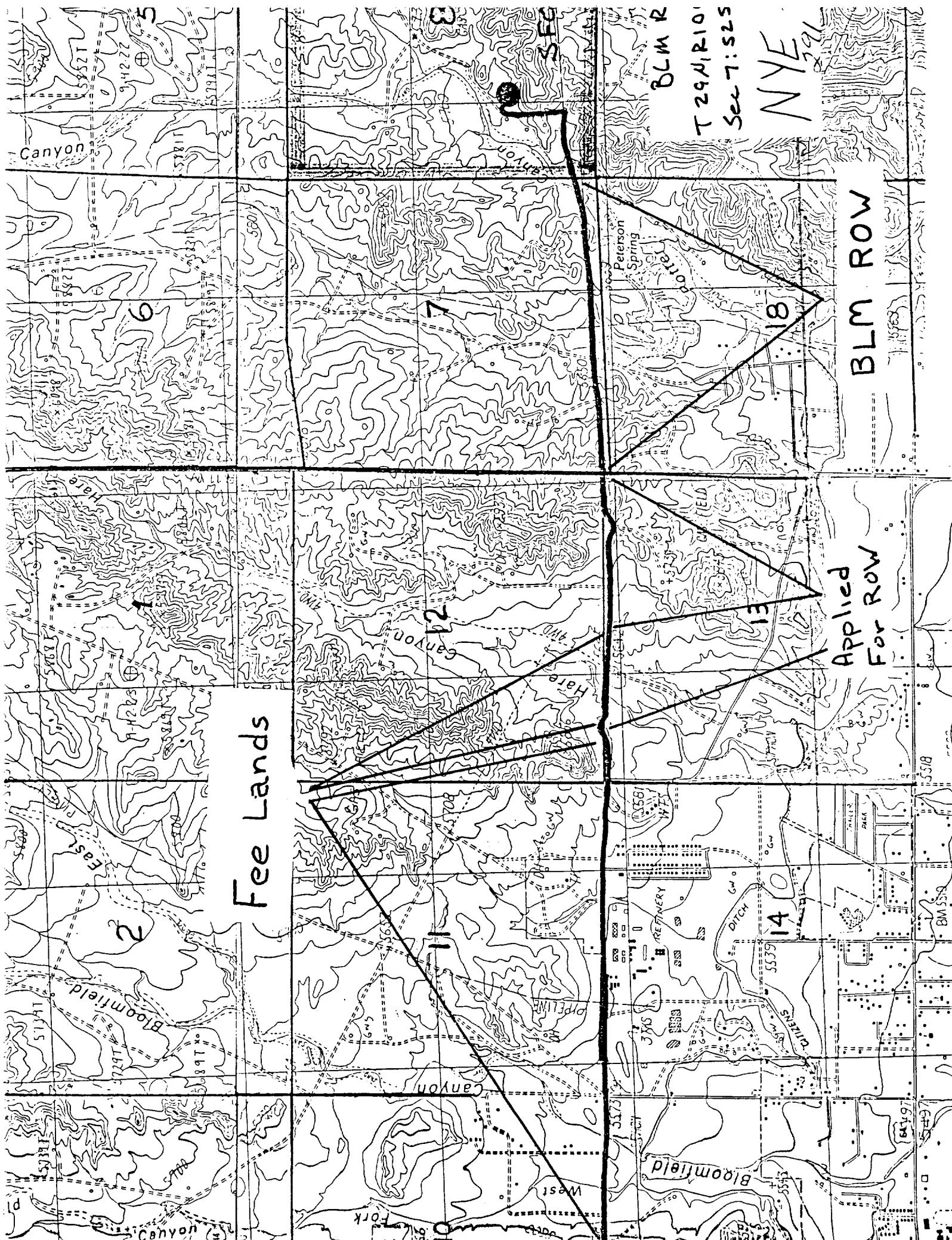
I hereby certify that the location shown on this plat was verified from the notes of actual survey made by me under supervision, and that the same is true and correct to the best of my knowledge and belief.

Date Surveyed  
11/26/88

Registered Professional Engineer  
and/or Land Surveyor

Neale C. Edwards

Certificate No.  
6857



Fee Lands

Applied  
For ROW

BLM ROW

BLM R  
T 29N, R 10W  
Sec 7: S2S

NYE  
2011