

UNITED STATES  
DEPARTMENT OF THE INTERIOR  
BUREAU OF LAND MANAGEMENT

APPLICATION FOR PERMIT TO DRILL, DEEPEN, OR PLUG BACK

1a. TYPE OF WORK  
DRILL ☒ DEEPEN ☐ PLUG BACK ☐

b. TYPE OF WELL  
OIL WELL ☐ GAS WELL ☒ OTHER ☐

2. NAME OF OPERATOR  
Southland Royalty Company

3. ADDRESS OF OPERATOR  
PO Box 4289, Farmington, NM 87499

4. LOCATION OF WELL (Report location clearly and in accordance with any State requirements.)  
At surface 260'S, 1330'W

At proposed prod. zone

14. DISTANCE IN MILES AND DIRECTION FROM NEAREST TOWN OR POST OFFICE\*  
3 miles from Blanco, NM

15. DISTANCE FROM PROPOSED\*  
LOCATION TO NEAREST  
PROPERTY OR LEASE LINE, FT.  
(Also to nearest drilg. unit line, if any)  
1330'

16. NO. OF ACRES IN LEASE  
2336.05

17. NO. OF ACRES ASSIGNED  
TO THIS WELL  
10.00

18. DISTANCE FROM PROPOSED LOCATION\*  
TO NEAREST WELL, DRILLING, COMPLETED,  
OR APPLIED FOR, ON THIS LEASE, FT.  
500'

19. PROPOSED DEPTH  
2159'

20. ROTARY OR CABLE TOOLS  
Rotary

21. ELEVATION (Show whether DF, RT, GR, etc.)

22. APPROX. DATE WORK WILL START\*

23. DRILLING OPERATIONS AUTHORIZED ARE

SUBJECT TO COMPLIANCE WITH ATTACHED PROPOSED CASING AND CEMENTING PROGRAM

"GENERAL REQUIREMENTS"

SIZE OF HOLE	SIZE OF CASING	WEIGHT PER FOOT	SETTING DEPTH	QUANTITY OF CEMENT
12 1/4"	9 5/8"	32.3#	200'	125 cf. circulated
8 3/4"	7"	20.0#	1993'	297 cf. circ. surface
6 1/4"	5 1/2" liner	15.5#	2159'	do not cement

The Fruitland coal formation will be completed.

A 3000 psi WP and 6000 psi test double gate preventer equipped with blind and pipe rams will be used for blow out prevention on this well.

This gas is dedicated.

The W/2 of Section 10 is dedicated to this well.

IN ABOVE SPACE DESCRIBE PROPOSED PROGRAM: If proposal is to deepen or plug back, give data on present productive zone and proposed new productive zone. If proposal is to drill or deepen directionally, give pertinent data on subsurface locations and measured and true vertical depths. Give blowout preventer program, if any.

24. SIGNED [Signature] TITLE Regulatory Affairs DATE 12-22-88

(This space for Federal or State office use)

PERMIT NO. \_\_\_\_\_ APPROVAL DATE \_\_\_\_\_

APPROVED BY \_\_\_\_\_ TITLE \_\_\_\_\_  
CONDITIONS OF APPROVAL, IF ANY:

NMOCC

\*See Instructions On Reverse Side

APPROVED KV  
AS AMENDED  
DATE FEB 14 1989  
[Signature]  
AREA MANAGER

All distances must be from the outer boundaries of the Section.

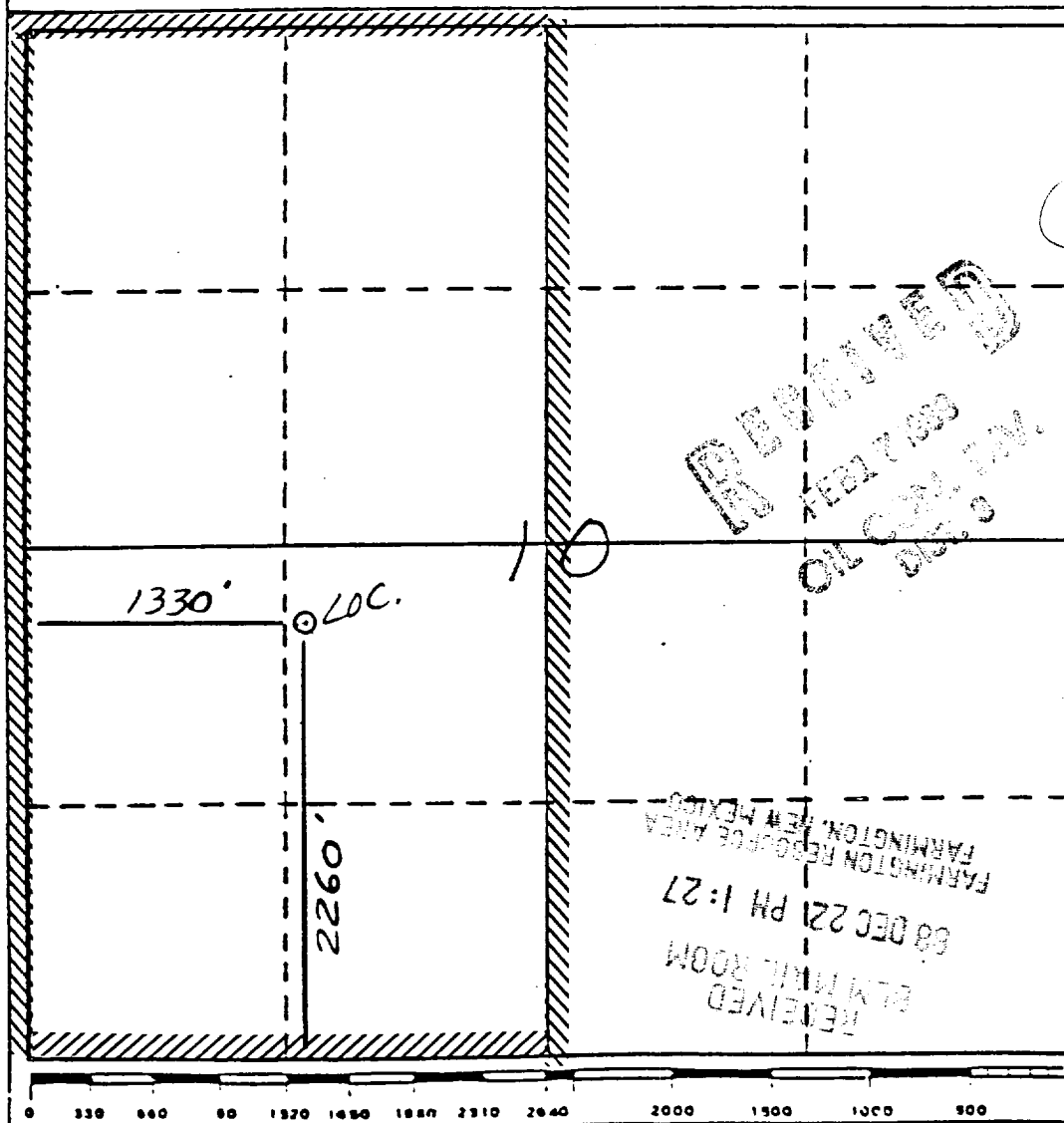
Operator <b>Southland Royalty Company</b>		Lease <b>Hare (SF-076958)</b>		Well No. <b>293</b>
Unit Letter <b>K</b>	Section <b>10</b>	Township <b>29 North</b>	Range <b>10 West</b>	County <b>San Juan</b>
Actual Footage Location of Wells <b>2260</b> feet from the <b>South</b> line and <b>1330</b> feet from the <b>West</b> line				
Ground Level Elev. <b>5752'</b>	Producing Formation <b>Fruitland Coal</b>	Pool <b>Basin</b>	Dedicated Acreage: <b>320.318.64/100</b>	

1. Outline the acreage dedicated to the subject well by colored pencil or hatchure marks on the plat below.
2. If more than one lease is dedicated to the well, outline each and identify the ownership thereof (both as to work interest and royalty).
3. If more than one lease of different ownership is dedicated to the well, have the interests of all owners been consolidated by communitization, unitization, force-pooling, etc?

☐ Yes ☐ No If answer is "yes," type of consolidation \_\_\_\_\_

If answer is "no," list the owners and tract descriptions which have actually been consolidated. (Use reverse side this form if necessary.) \_\_\_\_\_

No allowable will be assigned to the well until all interests have been consolidated (by communitization, unitization, forced-pooling, or otherwise) or until a non-standard unit, eliminating such interests, has been approved by the Division.



#### CERTIFICATION

I hereby certify that the information contained herein is true and complete to best of my knowledge and belief.

*Neale C. Edwards*  
Name

Regulatory Affairs

Position

Southland Royalty

Company

12-22-88

Date

I hereby certify that the information shown on this plat was plotted from the notes of actual surveys made by me under supervision, and that the same is true and correct to the best of my knowledge and belief.

*Neale C. Edwards*  
Date Surveyed

11-1-88

Registered Professional Engineer  
and/or Land Surveyor

Neale C. Edwards

Certificate No.

6857

