

UNITED STATES
DEPARTMENT OF THE INTERIOR
BUREAU OF LAND MANAGEMENT
GEOLOGICAL SURVEY

APPLICATION FOR PERMIT TO DRILL, DEEPEN, OR PLUG BACK

63 JAN 27 PM 2:32

1a. TYPE OF WORK DRILL ☒ DEEPEN ☐ PLUG BACK ☐

b. TYPE OF WELL OIL WELL ☐ GAS WELL ☒ OTHER ☐ FARMINGTON RESOURCE AREA
FARMINGTON, NEW MEXICO SINGLE ZONE ☒ MULTIPLE ZONE ☐

2. NAME OF OPERATOR Blackwood & Nichols Co., Ltd.

3. ADDRESS OF OPERATOR P.O. Box 1237, Durango, Colorado, 81302-1237

4. LOCATION OF WELL (Report location clearly and in accordance with any State requirements.)*
At surface 930' FSL - 610' FWL
At proposed prod. zone same

14. DISTANCE IN MILES AND DIRECTION FROM NEAREST TOWN OR POST OFFICE* 15 miles NE of Blanco, New Mexico

15. DISTANCE FROM PROPOSED* LOCATION TO NEAREST PROPERTY OR LEASE LINE, FT. (Also to nearest drlg. unit line, if any) 610'

16. NO. OF ACRES IN LEASE 1779.91

17. NO. OF ACRES ASSIGNED TO THIS WELL 296.02 See plot

18. DISTANCE FROM PROPOSED LOCATION* TO NEAREST WELL, DRILLING, COMPLETED, OR APPLIED FOR, ON THIS LEASE, FT. 350'

19. PROPOSED DEPTH 3332'

20. ROTARY OR CABLE TOOLS Rotary

21. ELEVATIONS (Show whether DF, RT, GR, etc.) 6176' GL

22. APPROX. DATE WORK WILL START* April 1, 1989

DRILLING OPERATIONS AUTHORIZED ARE
SUBJECT TO COMPLIANCE WITH ATTACHED
"GENERAL REQUIREMENTS"

PROPOSED CASING AND CEMENTING PROGRAM

SIZE OF HOLE	SIZE OF CASING	WEIGHT PER FOOT	SETTING DEPTH	QUANTITY OF CEMENT
12 1/4"	9 5/8"	36#	300'	207 cuft to circulate
8 3/4"	7"	23#	3332'	858 cuft to circulate

Propose to spud in the San Jose formation. Will drill a 12 1/4" hole to a TD of 300'. Surface casing will be run and cemented with cement returns to surface. WOC 12 hours. Test to 600 psi/30 mins. Drill a 8 3/4" hole to a TD of 3332' using fresh water mud. No poisonous gases are anticipated. A weighted mud will be used to drill the Fruitland coals. Logs will be run at TD. Casing will be run and cemented in two stages with cement returns to surface. The drilling rig will be released and a completion unit moved on. Cased hole bond and correlation logs will be run. The Fruitland coals will be perforated and frac'd using a fresh water base gel fluid.

RECEIVED

MAR 3 0 1989

OIL CON. DIV.

Surface ownership is Bureau of Reclamation.

IN ABOVE SPACE DESCRIBE PROPOSED PROGRAM: If proposal is to deepen or plug back, give data on present productive zone and proposed new productive zone. If proposal is to drill or deepen directionally, give pertinent data on subsurface locations and measured and true depths. Give blowout preventer program, if any.

24. SIGNED William F. Blue TITLE Operations Manager DATE Jan 24, 1989

(This space for Federal or State office use)

PERMIT NO. _____ APPROVAL DATE _____

APPROVED BY _____ TITLE _____ DATE _____

CONDITIONS OF APPROVAL, IF ANY:

IR-8887 (NSP+NSL)

*See Instructions On Reverse Side

APPROVED
AS AMENDED

MAR 2 1989

AREA MANAGER

STATE OF NEW MEXICO
ENERGY AND MINERALS DEPARTMENT

OIL CONSERVATION DIVISION
P. O. BOX 2088
SANTA FE, NEW MEXICO 87501

Form C-102
Revised 10-1

All distances must be from the outer boundaries of the Section.

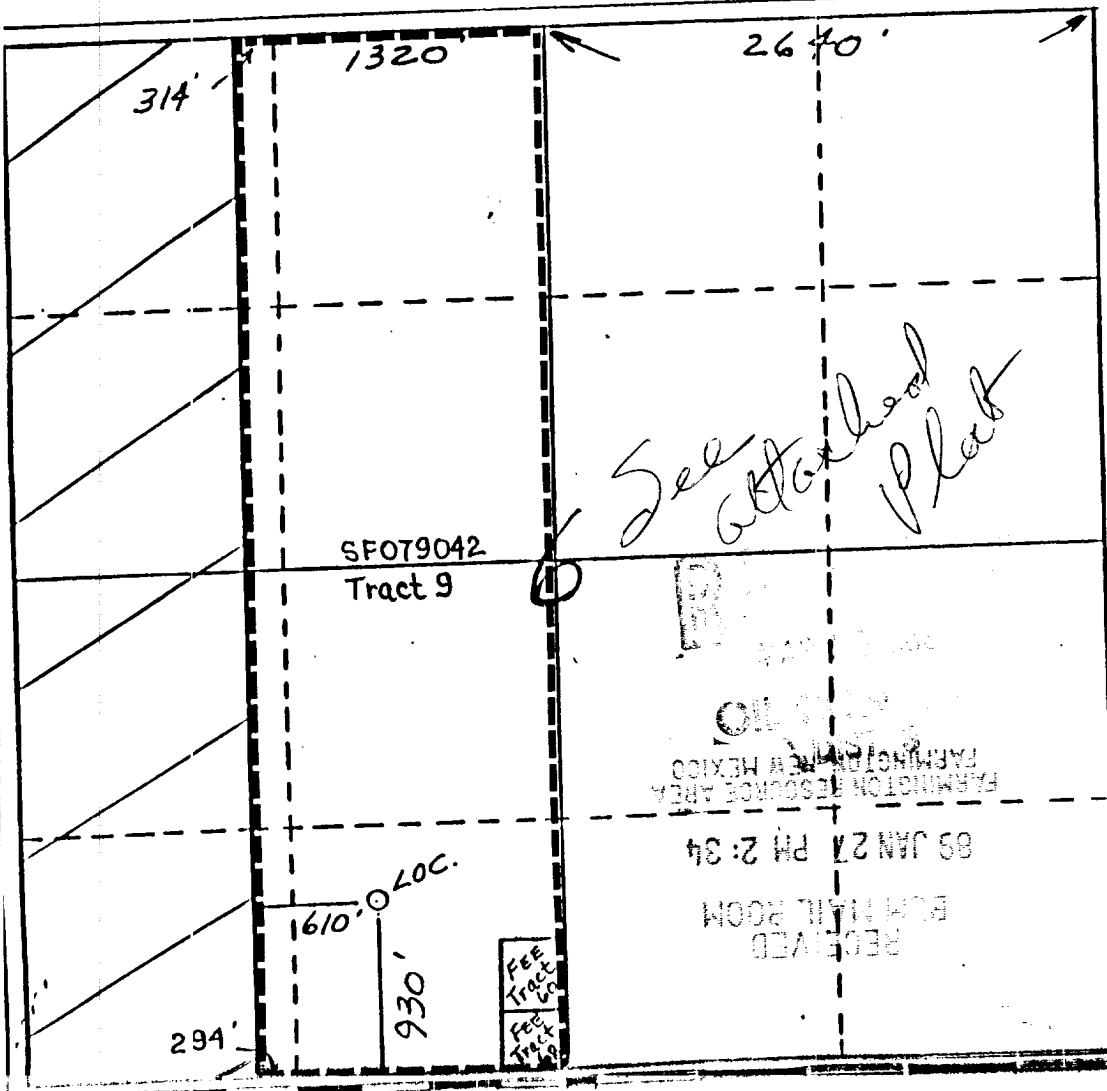
Operator Blackwood & Nichols Co., LTD.		Lease Northeast Blanco Unit		Well No. 453
Unit Letter N	Section 6	Township 30 North	Range 7 West	County San Juan
Actual Footage Location of Wells				
930	feet from the	South	line and	610 feet from the West line
Ground Level Elev. 6176'	Producing Formation Fruitland Coal		Pool Basin Fruitland Coal	Dedicated Acreage: 296.02

1. Outline the acreage dedicated to the subject well by colored pencil or hatchure marks on the plat below. See attached plat. Dedicated acreage includes the SW/4 of Sec.31, T31N, R7W
2. If more than one lease is dedicated to the well, outline each and identify the ownership thereof (both as to work interest and royalty). SW/4 of Sec.31, T31N, R7W is SF079082
3. If more than one lease of different ownership is dedicated to the well, have the interests of all owners been consolidated by communitization, unitization, force-pooling, etc?

☒ Yes ☐ No If answer is "yes," type of consolidation Unitization

If answer is "no," list the owners and tract descriptions which have actually been consolidated. (Use reverse side this form if necessary.)

No allowable will be assigned to the well until all interests have been consolidated (by communitization, unitization, forced-pooling, or otherwise) or until a non-standard unit, eliminating such interests, has been approved by the Division.



CERTIFICATION

I hereby certify that the information contained herein is true and complete to the best of my knowledge and belief.

William F. Edwards
Name

Position
Operations Manager

Company
Blackwood & Nichols Co.

Date
January 24, 1989

I hereby certify that the information shown on this plat was obtained from notes of record and is true and correct to the best of my knowledge and belief.

W. C. Edwards
Date Surveyed

12/23/88
Registered Professional Engineer and/or Land Surveyor

W. C. Edwards
Certificate No.

R. 8 W.

R. 7 W.

Case #1005
Order #R-749

T.

Case #1006 31
R-750-A

N.

Case #1007
R-751

Case #1008
R-752


30


N.

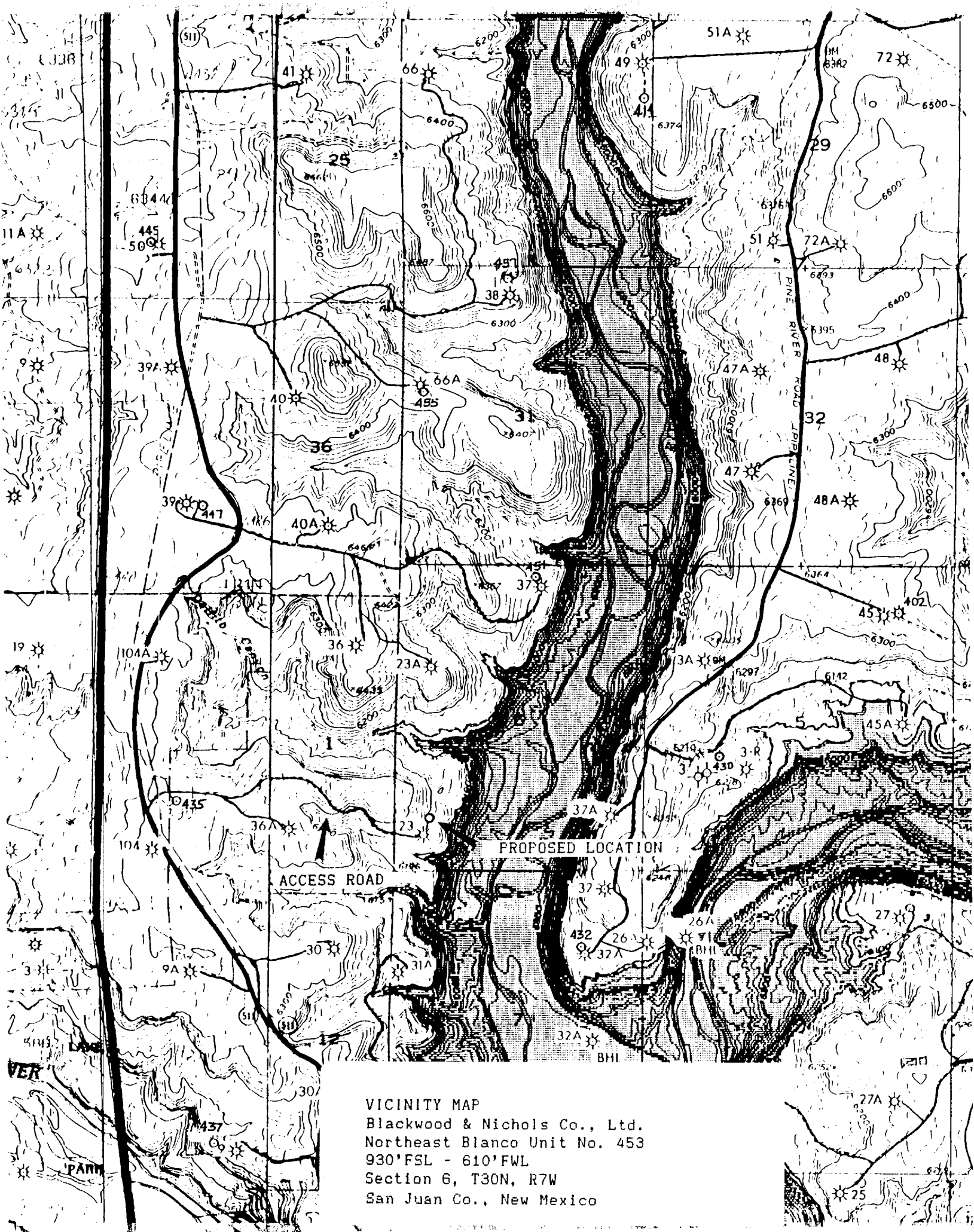
Case #1009
R-753

— PORTION OF —
**NORTHEAST
BLANCO
UNIT**
**SAN JUAN & RIO ARriba
COUNTIES**
NEW MEXICO

- Completed Oil Well
- Location of Drilling Well
- ◇ Dry Hole
- ◻ Abandoned Location
- ◆ Gas Well

SCALE: 1" = 3000'  DAM SITE

 - Dedicated Acreage



VICINITY MAP
Blackwood & Nichols Co., Ltd.
Northeast Blanco Unit No. 453
930' FSL - 610' FWL
Section 6, T30N, R7W
San Juan Co., New Mexico