

UNITED STATES
DEPARTMENT OF THE INTERIOR
BUREAU OF LAND MANAGEMENT

SUNDRY NOTICES AND REPORTS ON WELLS

| | | | |
|--|---------------------------|---|-----------------|
| 1. TYPE OF WELL GAS | | 5. LEASE NUMBER SF-079509 | |
| 2. OPERATOR MERIDIAN OIL INC. | | 6. IF INDIAN, ALL. OR TRIBE NAME | |
| 3. ADDRESS & PHONE NO. OF OPERATOR P O BOX 4289 FARMINGTON, NM 87499 | | 7. UNIT AGREEMENT NAME | |
| 4. LOCATION OF WELL 1630'N 1190'E | | 8. FARM OR LEASE NAME NEUDECKER COM | |
| | | 9. WELL NO. 290 | |
| | | 10. FIELD, POOL, OR WILDCAT BASIN FRUITLAND COAL | |
| | | 11. SEC. T. R. M OR BLK. SEC. 14 T29N R10W NMPM | |
| 14. PERMIT NO. | 15. ELEVATIONS 5895'GL | 12. COUNTY SAN JUAN | 13. STATE NM |
| 16. NOTICE OF INTENTION TO: Change Plans | | | |
| 17. Describe proposed or completed operations | | | |

Attached is a revised operations plan, BOPE diagram and anticipated production facilities diagram on the subject well.

RECEIVED
APR 02 1990
OIL CON. DIV.
DIST. 3

18. AUTHORIZED BY:

P. L. L.
REGULATORY AFFAIRS

9/9/89
DATE

NOTE: THIS FORMAT IS ISSUED IN LIEU OF US BLM FORM 3160-5.

=====

(This space for Federal or State office use)

APPROVED BY _____ TITLE _____
CONDITION OF APPROVAL, IF ANY: _____

| |
|--|
| APPROVED |
| MAR 29 1990 Kendall Townsend |
| 370 AREA MANAGER FARMINGTON RESOURCE AREA |

Well Name: 290 NEUDECKER COM
 Sec. 14 T29N R10W
 BASIN FRUITLAND COAL

1630'N 1190'E
 SAN JUAN NEW MEXICO
 Elevation 5895'GL

Formation tops: Surface- NACIMIENTO
 Ojo Alamo- 1116
 Kirtland- 1230
 Fruitland- 2002
 Fruitland Coal Top- 2137
 Fruitland Coal Base- 2280
 Total Depth- 2286
 Pictured Cliffs- 2289

Logging Program: Mud logs from 2002 to total depth.

| Mud Program: | Interval | Type | Weight | Visc. | Fl. Loss |
|--------------|------------|---------------|-----------|-------|------------|
| | 0 - 200 | Spud | 8.4 - 8.9 | 40-50 | no control |
| | 200 - 2286 | Non-dispersed | 8.4 - 9.5 | 30-60 | no control |

| Casing Program: | Hole Size | Depth Interval | Csg. Size | Weight | Grade |
|-----------------|-----------|----------------|-----------|--------|-------|
| | 12 1/4" | 0 - 200 | 8 5/8" | 24.0# | K-40 |
| | 7 7/8" | 0 - 2286 | 5 1/2" | 15.5# | K-55 |
| Tubing Program: | | 0 - 2286 | 2 3/8" | 4.7# | J-55 |

Float Equipment: 8 5/8" surface casing - saw tooth guide shoe.

5 1/2" production casing - float shoe on bottom.

Three centralizers run every other joint above shoe.

Wellhead Equipment: 8 5/8" x 5 1/2" x 2 3/8" x 11" 3000 psi xmas tree assembly

Cementing:

8 5/8" surface casing - cement with 140 sacks of class "B" cement with 1/4# flocculent/sack and 3% calcium chloride (165 cu ft. of slurry, 100% excess to circulate to surface). WOC 12 hours. Test casing to 600 psi for 30 minutes.

5 1/2" production casing - lead with 149 sacks of 65/35 class "B" poz with 6% gel, 2% calcium chloride and 1/2 cu.ft. Perlite/sack (10.3 gallons of water/sack) tail with 100 sacks of class "B" with 2% calcium chloride. 406 cu ft. of slurry, 100% excess to cover the Ojo Alamo. Run temperature survey at 8 hours. WOC 12 hours. Test casing to 1500 psi for 30 minutes.

BOP and Tests:

Surface to TD - 11" 2000 psi(minimum) double gate BOP stack

From surface to TD - choke manifold (Reference Figure #3).

Pipe rams will be actuated at least once each day and blind rams actuated once each trip to test proper functioning. A kelly cock valve and drill string safety valves to fit each drill string will be maintained and available on the rig floor.

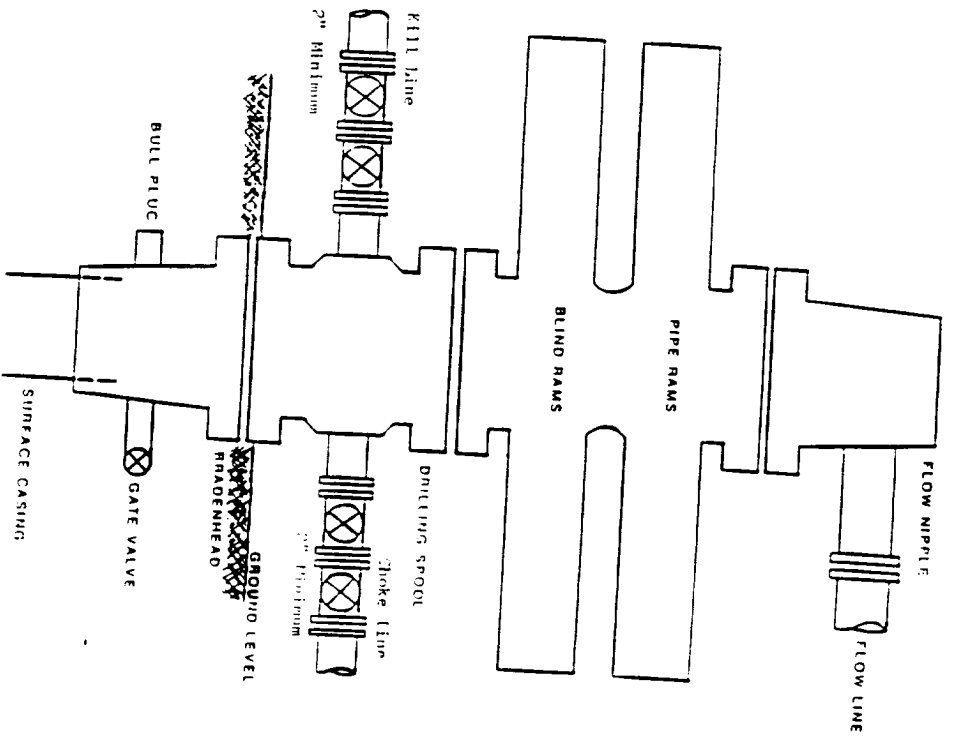
Addition Information:

The Fruitland coal formation will be completed.

This gas is dedicated.

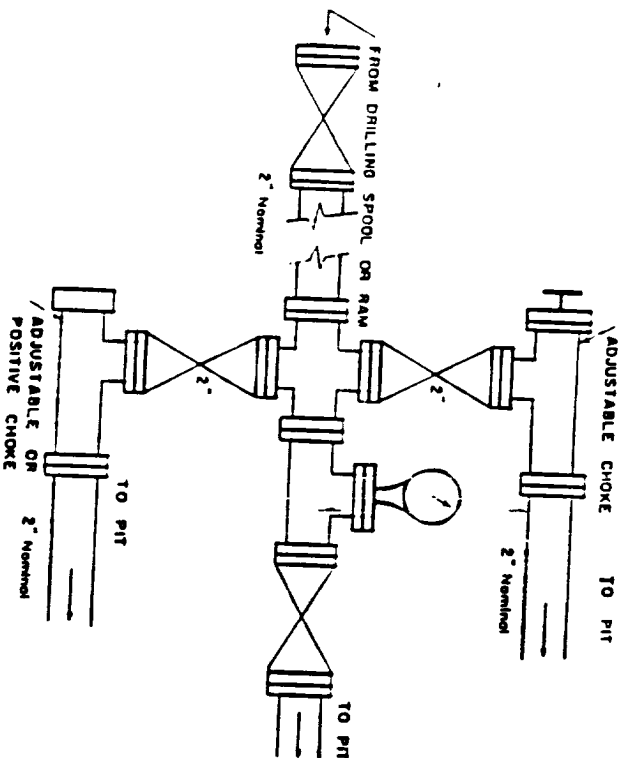
The N/2 of Section 14 is dedicated to this well.

FIGURE #1



Minimum POE Installation for a typical Fruitland Coal well from surface to Total Depth. 11", 2000 psi working pressure double gate BOP equipped with blind and pipe rams.

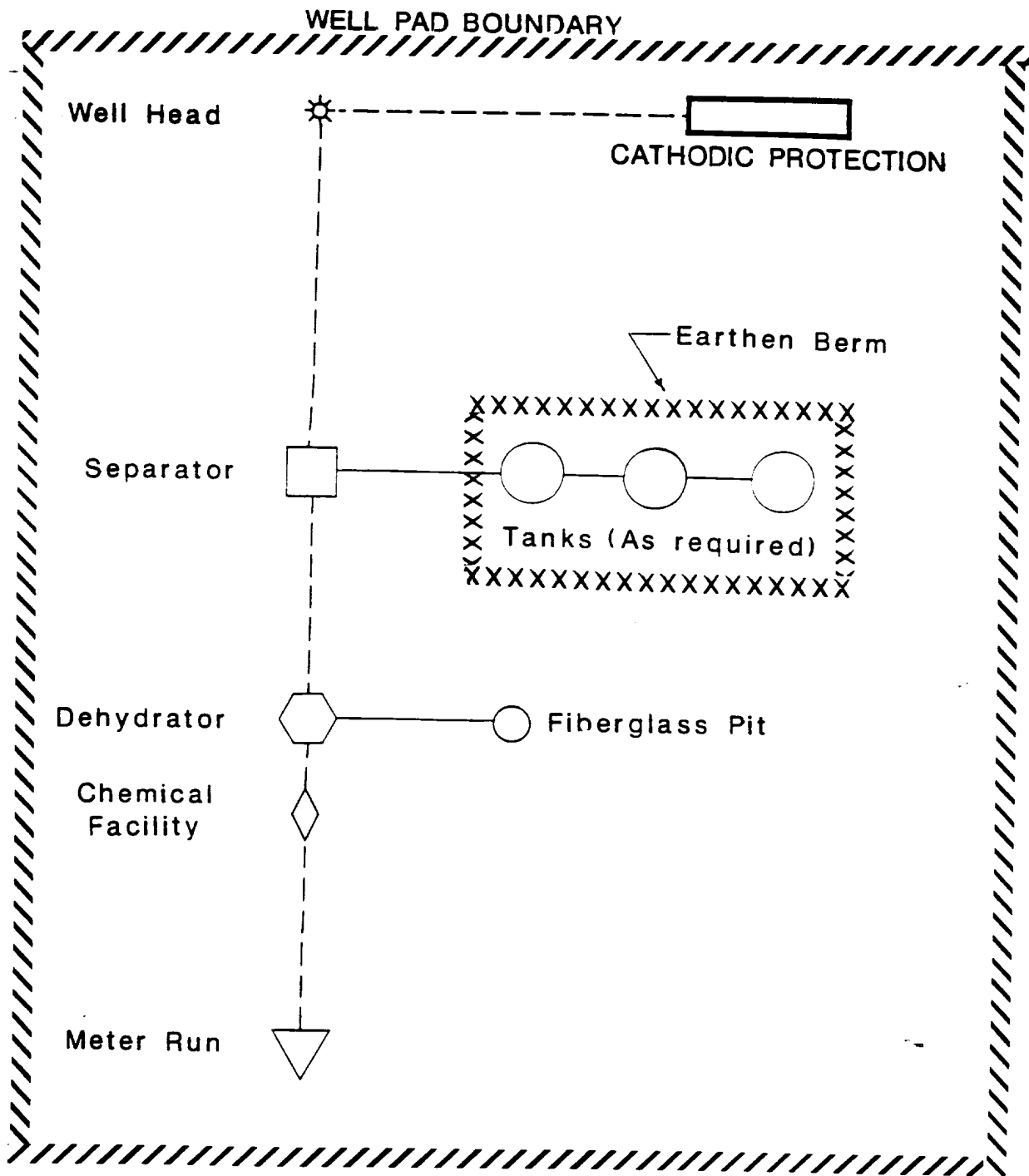
FIGURE #3



Minimum choke manifold configuration for a typical Fruitland Coal well from surface to TD. 2", 2000 psi working pressure equipment with two chokes.

LONG STRING FCCW BOP

UP04240 9/8/87



MERIDIAN OIL

ANTICIPATED
PRODUCTION FACILITIES
FOR A
FRUITLAND WELL

J. Falconi

4/28/89