

Submit to Appropriate
District Office
State Lease - 6 copies
Fee Lease - 5 copies

State of New Mexico
Energy, Minerals and Natural Resources Department

Form C-101
Revised 1-1-89

OIL CONSERVATION DIVISION

P.O. Box 2088
Santa Fe, New Mexico 87504-2088

DISTRICT I
P.O. Box 1980, Hobbs, NM 88240

DISTRICT II
P.O. Drawer DD, Artesia, NM 88210

DISTRICT III
1000 Rio Brazos Rd., Aztec, NM 87410

API NO. (assigned by OCD on New Wells)

5. Indicate Type of Lease

STATE ☐

FEE ☒

6. State Oil & Gas Lease No.

FEE

APPLICATION FOR PERMIT TO DRILL, DEEPEN, OR PLUG BACK

1a. Type of Work:

DRILL ☒

RE-ENTER ☐

DEEPEN ☐

PLUG BACK ☐

b. Type of Well:

OIL
WELL ☐

GAS
WELL ☒

OTHER

SINGLE
ZONE ☒

MULTIPLE
ZONE ☐

7. Lease Name or Unit Agreement Name

Northeast Blanco Unit

2. Name of Operator

Blackwood & Nichols Co., LTD

8. Well No.

469

3. Address of Operator

P.O. Box 1237, Durango, CO 81302-1237

9. Pool name or Wildcat

Basin Fruitland Coal

4. Well Location

Unit Letter

H

: 1315

Feet From The

North

Line and

645

Feet From The

East

Line

13 Section

30 North

Township

8 West

Range

NMPM

San Juan

County

10. Proposed Depth

3465'

11. Formation

Basin Fruitland Coa

12. Rotary or C.T.

Rotary

13. Elevations (Show whether DF, RT, GR, etc.)

6303' GL

14. Kind & Status Plug. Bond

State Wide

15. Drilling Contractor

16. Approx. Date Work will start

May 1, 1989

17.

PROPOSED CASING AND CEMENT PROGRAM

SIZE OF HOLE	SIZE OF CASING	WEIGHT PER FOOT	SETTING DEPTH	SACKS OF CEMENT	EST. TOP
12 1/4"	9 5/8"	36#	650'	410	Surface
7 7/8"	5 1/2"	17#	3465'	570	Surface

Propose to spud in the San Jose formation. Will drill a 12 1/4" surface hole to a TD of 300'. Surface casing will be run and cemented with cement returns to surface. WOC 12 hrs. Test to 600 psi. Drill a 7 7/8" hole to a TD of 3465' using a fresh water mud. No poisonous gases are anticipated. Weighted mud will be used to drill the Fruitland coals. Logs will be run at TD. Casing will be run and cemented in two stages with cement returns to surface. The drilling rig will be released and a completion unit moved on. Cased hole bond and correlation logs will be run. The Fruitland coals will be perforated from 3025' to 3265' and frac'd with a fresh water based gel fluid.

RECEIVED

APR 24 1989

Surface ownership is Bureau of Reclamation.

IN ABOVE SPACE DESCRIBE PROPOSED PROGRAM: IF PROPOSAL IS TO DEEPEN OR PLUG BACK, GIVE DATA ON PRESENT PRODUCTION ZONE AND PROPOSED NEW PRODUCTIVE ZONE. GIVE BLOWOUT PREVENTER PROGRAM, IF ANY.

OIL CON. DIV.
DIST. 3

I hereby certify that the information above is true and complete to the best of my knowledge and belief.

SIGNATURE William F. Clark TITLE Operations Manager

DATE April 17, '89

TYPE OR PRINT NAME William F. Clark

303/247-0728
TELEPHONE NO.

(This space for State Use)

APPROVED BY Egon Burch

TITLE DEPUTY OIL & GAS INSPECTOR, DIST. #3

DATE APR 24 1989

CONDITIONS OF APPROVAL, IF ANY:

Hold C-104 FOR NSL

APPROVAL EXPIRES 10-24-89
UNLESS DRILLING IS COMMENCED.
SPUD NOTICE MUST BE SUBMITTED

Submit to Appropriate
District Office
State Lease - 4 copies
Fee Lease - 3 copies

State of New Mexico
Energy, Minerals and Natural Resources Department

Form C-102
Revised 1-1-89

OIL CONSERVATION DIVISION

P.O. Box 2088
Santa Fe, New Mexico 87504-2088

DISTRICT I
P.O. Box 1980, Hobbs, NM 88240

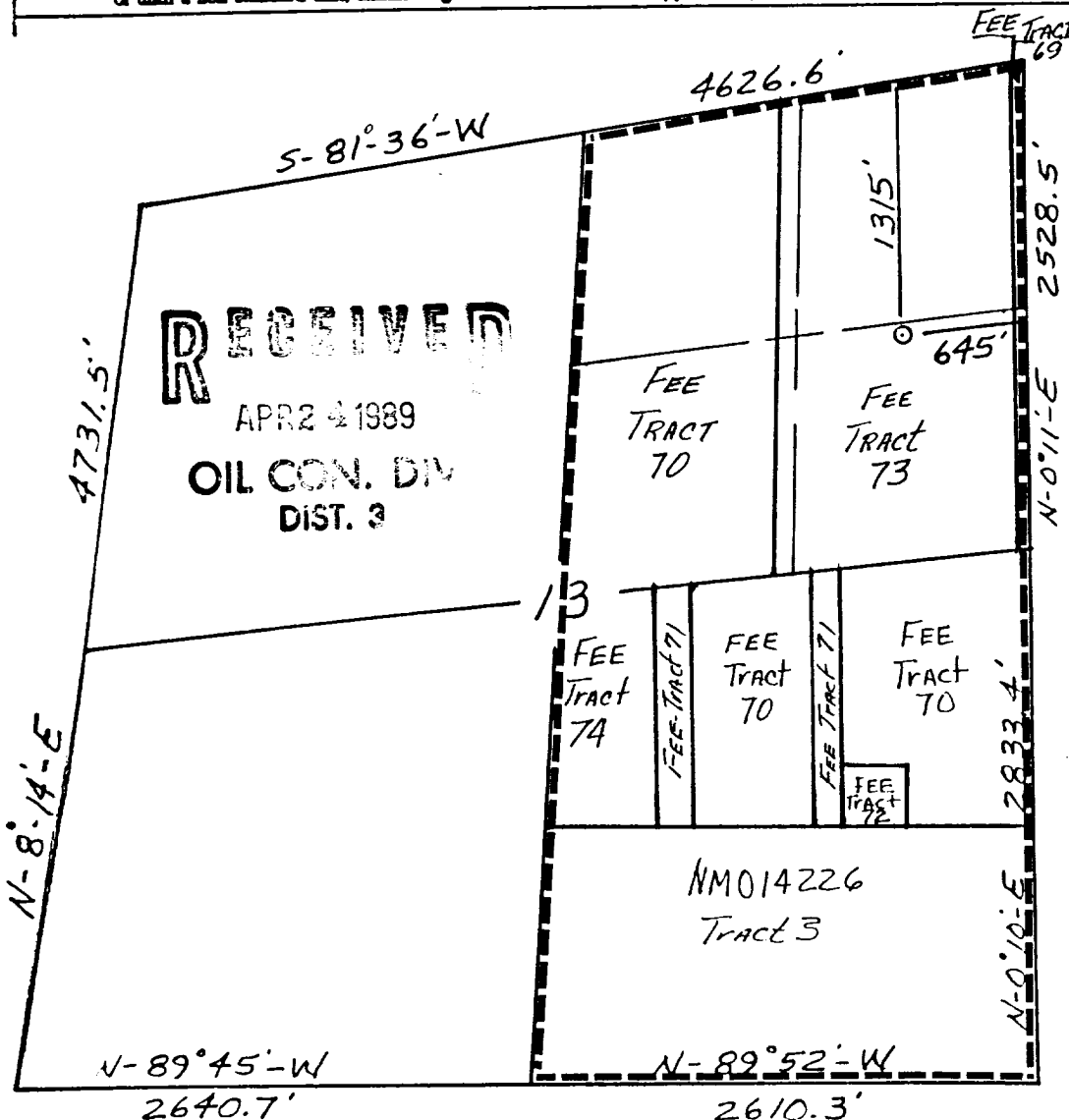
DISTRICT II
P.O. Drawer DD, Artesia, NM 88210

DISTRICT III
1000 Rio Brazos Rd., Aztec, NM 87410

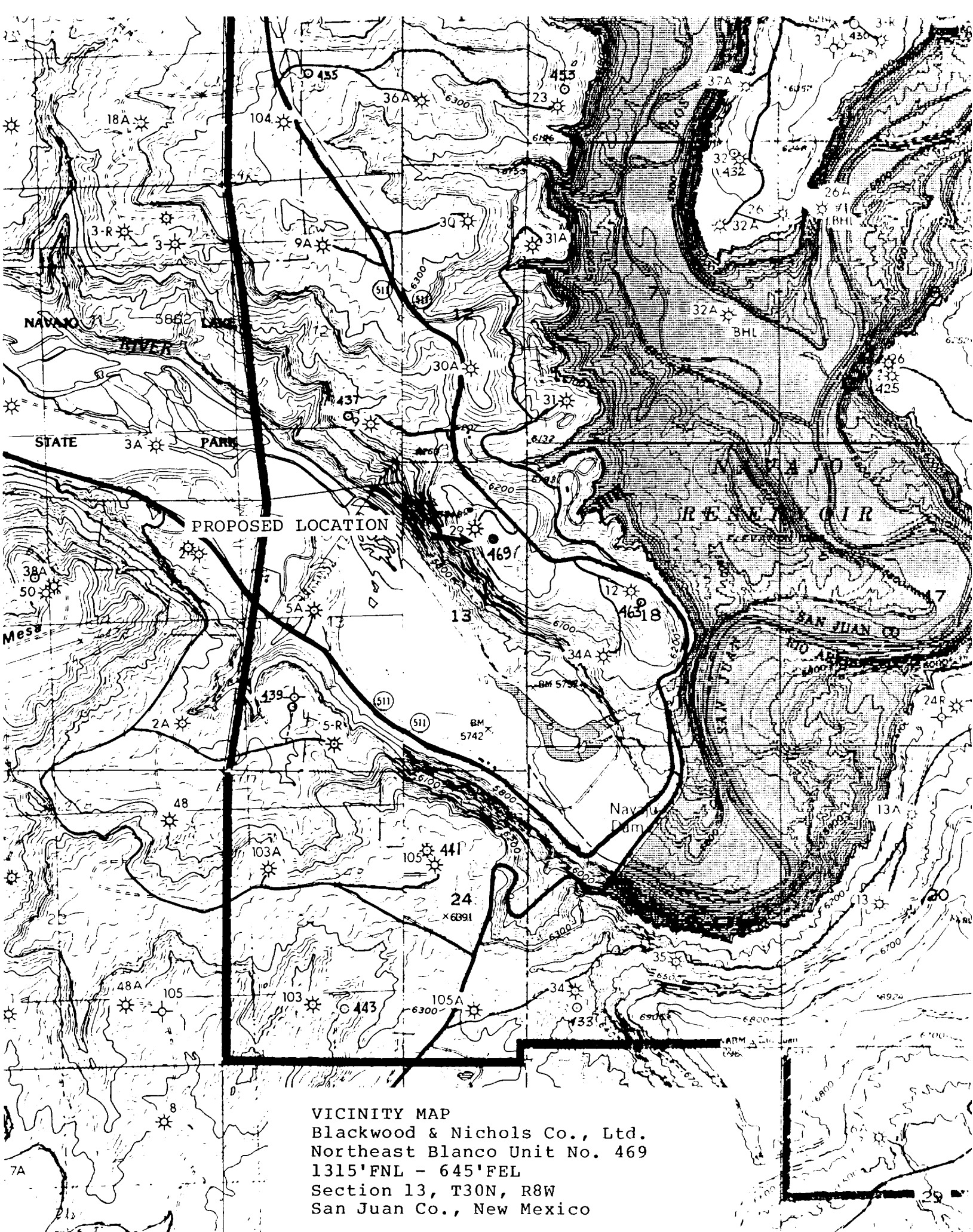
WELL LOCATION AND ACREAGE DEDICATION PLAT

All Distances must be from the outer boundaries of the section

Operator Blackwood & Nichols Co., LTD.		Lease Northeast Blanco Unit		Well No. 469
Unit Later H	Section 13	Township 30 North	Range 8 West	County San Juan
Actual Footage Location of Well: 1315 feet from the North line and 645 feet from the East line				
Gross Acre Elev. 5303	Producing Formation Fruitland Coal	Pool Basin Fruitland Coal	Dedicated Acreage: 320 Acres	
<p>1. Outline the acreage dedicated to the subject well by colored pencil or hatchure marks on the plat below.</p> <p>2. If more than one lease is dedicated to the well, outline each and identify the ownership thereof (both as to working interest and royalty).</p> <p>3. If more than one lease of different ownership is dedicated to the well, have the interest of all owners been consolidated by communitization, unitization, force-pooling, etc.? <input checked="" type="checkbox"/> Yes <input type="checkbox"/> No If answer is "yes" type of consolidation Unitization</p> <p>If answer is "no" list the owners and tract descriptions which have actually been consolidated. (Use reverse side of this form if necessary.)</p> <p>No allowable will be assigned to the well until all interests have been consolidated (by communitization, unitization, forced-pooling, or otherwise) or until a non-standard unit, eliminating such interest, has been approved by the Division.</p>				



OPERATOR CERTIFICATION I hereby certify that the information contained herein is true and complete to the best of my knowledge and belief.	
Signature <i>William F. Clark</i>	Printed Name William F. Clark
Position Operations Manager	
Company Blackwood & Nichols, Co.	
Date April 17, 1989	
SURVEYOR CERTIFICATION I hereby certify that the well location shown on this plat was plotted from field notes of actual surveys made by me or under my supervision, and that the same is true and correct to the best of my knowledge and belief. 2-25-89	
Date Surveyed Neal B. Edwards	
Signature & Seal of Professional Surveyor <i>Neal B. Edwards</i> 6857 Certification No. 6857	



VICINITY MAP
Blackwood & Nichols Co., Ltd.
Northeast Blanco Unit No. 469
1315'FNL - 645'FEL
Section 13, T30N, R8W
San Juan Co., New Mexico