

UNITED STATES
DEPARTMENT OF THE INTERIOR
GEOLOGICAL SURVEY

APPLICATION FOR PERMIT TO DRILL, DEEPEN, OR PLUG BACK

1a. TYPE OF WORK

DRILL ☒DEEPEN ☐PLUG BACK ☐

b. TYPE OF WELL

OIL
WELL ☐GAS
WELL ☒

OTHER

2. NAME OF OPERATOR

Blackwood & Nichols Co., LTD.

3. ADDRESS OF OPERATOR

P.O. Box 1237, Durango, CO 81302-1237

4. LOCATION OF WELL (Report location clearly and in accordance with any State requirements.)*

At surface 2045' FSL - 1280' FWL

At proposed prod. zone

14. DISTANCE IN MILES AND DIRECTION FROM NEAREST TOWN OR POST OFFICE*

15 Miles NE of Blanco, New Mexico

15. DISTANCE FROM PROPOSED*

LOCATION TO NEAREST
PROPERTY OR LEASE LINE, FT.
(Also to nearest drilg. unit line, if any) *

1610'

18. DISTANCE FROM PROPOSED LOCATION*

TO NEAREST WELL, DRILLING, COMPLETED,
OR APPLIED FOR, ON THIS LEASE, FT.

550'

16. NO. OF ACRES IN LEASE

1779.91

19. PROPOSED DEPTH

3060'

17. NO. OF ACRES ASSIGNED

TO THIS WELL
319.52

20. ROTARY OR CABLE TOOLS

Rotary

21. ELEVATIONS (Show whether DF, RT, GR, etc.)

6174' GL DRILLING OPERATIONS AUTHORIZED ARE

23. SUBJECT TO COMPLIANCE WITH ATTACHED
PROPOSED CASING AND CEMENTING PROGRAM
"GENERAL REQUIREMENTS"This action is subject to technical and
procedural review pursuant to 43 CFR 3165.3
and appeal pursuant to 43 CFR 3165.4.

22. APPROX. DATE WORK WILL START*

April 1, 1989

SIZE OF HOLE	SIZE OF CASING	WEIGHT PER FOOT	SETTING DEPTH	
12 1/4"	9 5/8"	36 #	300'	207 cuft to circulate
8 3/4"	7"	23 #	2750'	781 cuft to circulate
6 1/4"	5 1/2"	17 #	2650- 3060'	39 cuft to circulate

Propose to spud in the San Jose formation. Will drill a 12 1/4" hole to a TD of 300'. Surface casing will be run and cemented, with cement returns to surface. WOC 12 hours. Pressure test to 600 psi/30 mins. Drill an 8 3/4" hole to a TD of 2750' using fresh water mud. No abnormal pressures or poisonous gases are anticipated. Run intermediate casing and cement with cement returns to surface. WOC 12 hours. Test to 1500 psi/ 30 mins. Drill a 6 1/4" hole through the Fruitland coals using water and air. A 5 1/2" liner will be run. The liner may or may not be cemented, depending on the wells natural producing ability. Surface is Bureau of Reclamation

RECEIVED

MAY 04 1989

OIL CON. DIV.

IN ABOVE SPACE DESCRIBE PROPOSED PROGRAM: If proposal is to deepen or plug back, present productive zone and proposed new productive zone. If proposal is to drill or deepen directionally, give pertinent data on subsurface locations and measured and true vertical depths. Give blowout preventer program, if any.

24.

SIGNED

William J. Hall

TITLE

Operations Manager

DATE

March 27, '89

(This space for Federal or State office use)

PERMIT NO.

APPROVAL DATE

APPROVED BY

TITLE

DATE

CONDITIONS OF APPROVAL, IF ANY:

APPROVED

AS AMENDED

APR 28 1989

AREA MANAGER

*See Instructions On Reverse Side

NMOCC

STATE OF NEW MEXICO
ENERGY AND MINERALS DEPARTMENT

P. O. BOX 2088
SANTA FE, NEW MEXICO 87501

Form C-102
Revised 10-1-78

All distances must be from the outer boundaries of the Section.

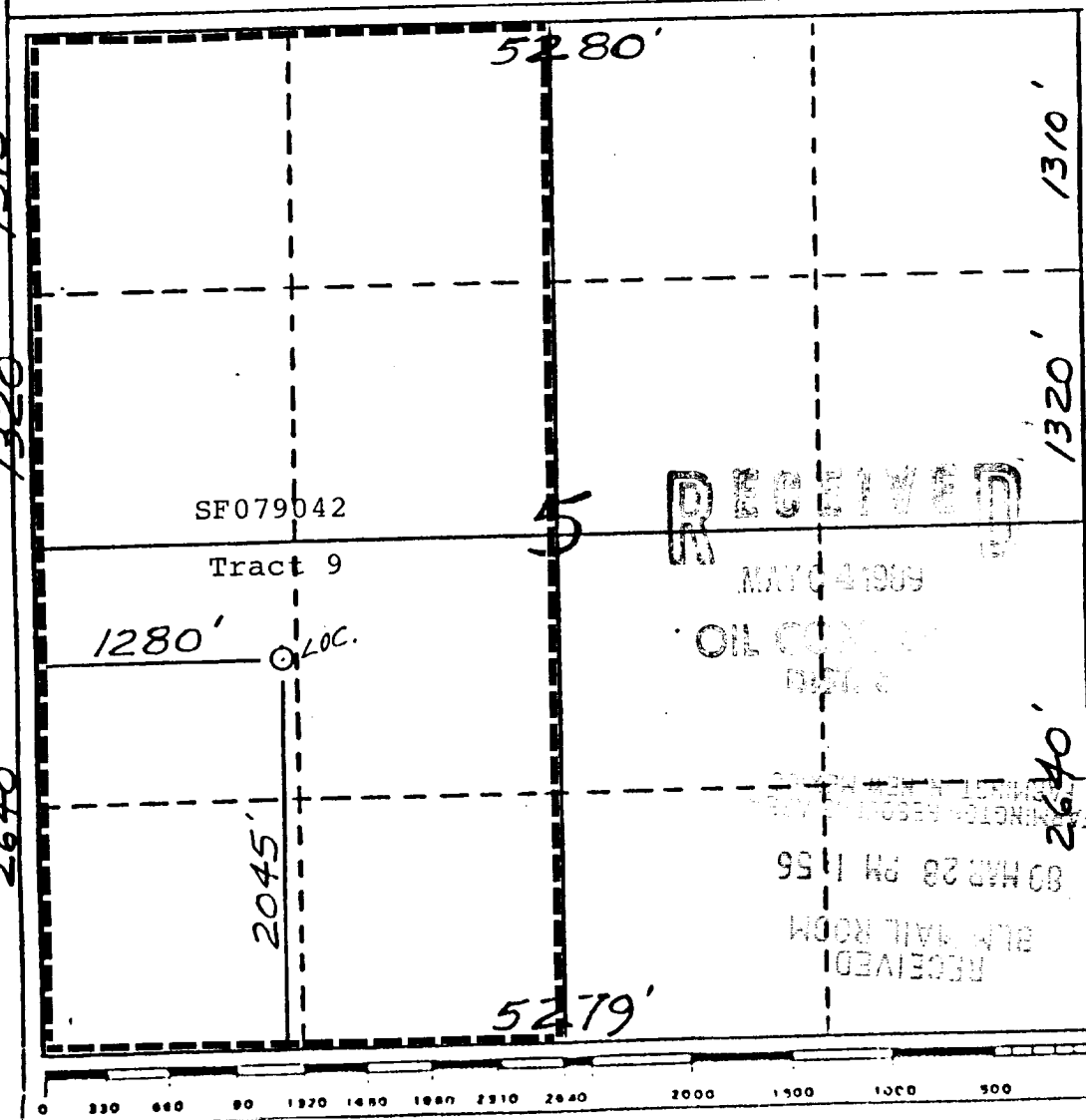
Operator Blackwood & Nichols Co., LTD.		Lease Northeast Blanco Unit		Well No. 430
Unit Letter L	Section 5	Township 30 North	Range 7 West	County San Juan
Actual Footage Location of Well: 2045 feet from the South line and 1280 feet from the West line				
Ground Level Elev. 6174	Producing Formation Fruitland Coal	Pool Fruitland Coal	Dedicated Acreage: 319.52 Acres	

1. Outline the acreage dedicated to the subject well by colored pencil or hatchure marks on the plat below.
2. If more than one lease is dedicated to the well, outline each and identify the ownership thereof (both as to working interest and royalty).
3. If more than one lease of different ownership is dedicated to the well, have the interests of all owners been consolidated by communitization, unitization, force-pooling, etc?

☐ Yes ☐ No If answer is "yes," type of consolidation N/A

If answer is "no," list the owners and tract descriptions which have actually been consolidated. (Use reverse side of this form if necessary.)

No allowable will be assigned to the well until all interests have been consolidated (by communitization, unitization, forced-pooling, or otherwise) or until a non-standard unit, eliminating such interests, has been approved by the Division.



CERTIFICATION

I hereby certify that the information contained herein is true and complete to the best of my knowledge and belief.

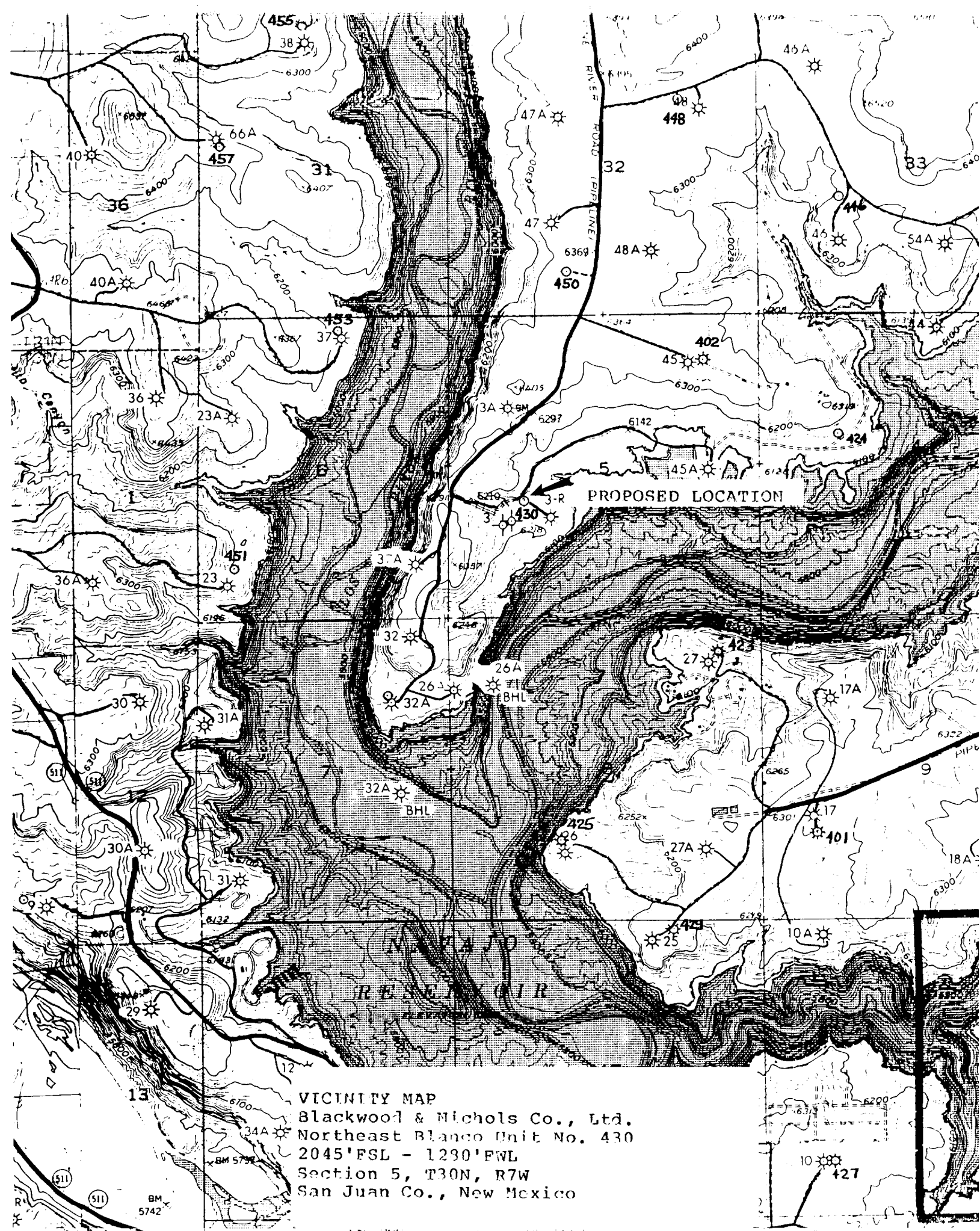
Name William F. Clark
Position Operations Manager
Company Blackwood & Nichols Co.
Date 3-27-89

I hereby certify that the location shown on this plat was plotted from field notes of actual surveys made by me or under my supervision, and that the same is true and correct to the best of my knowledge.

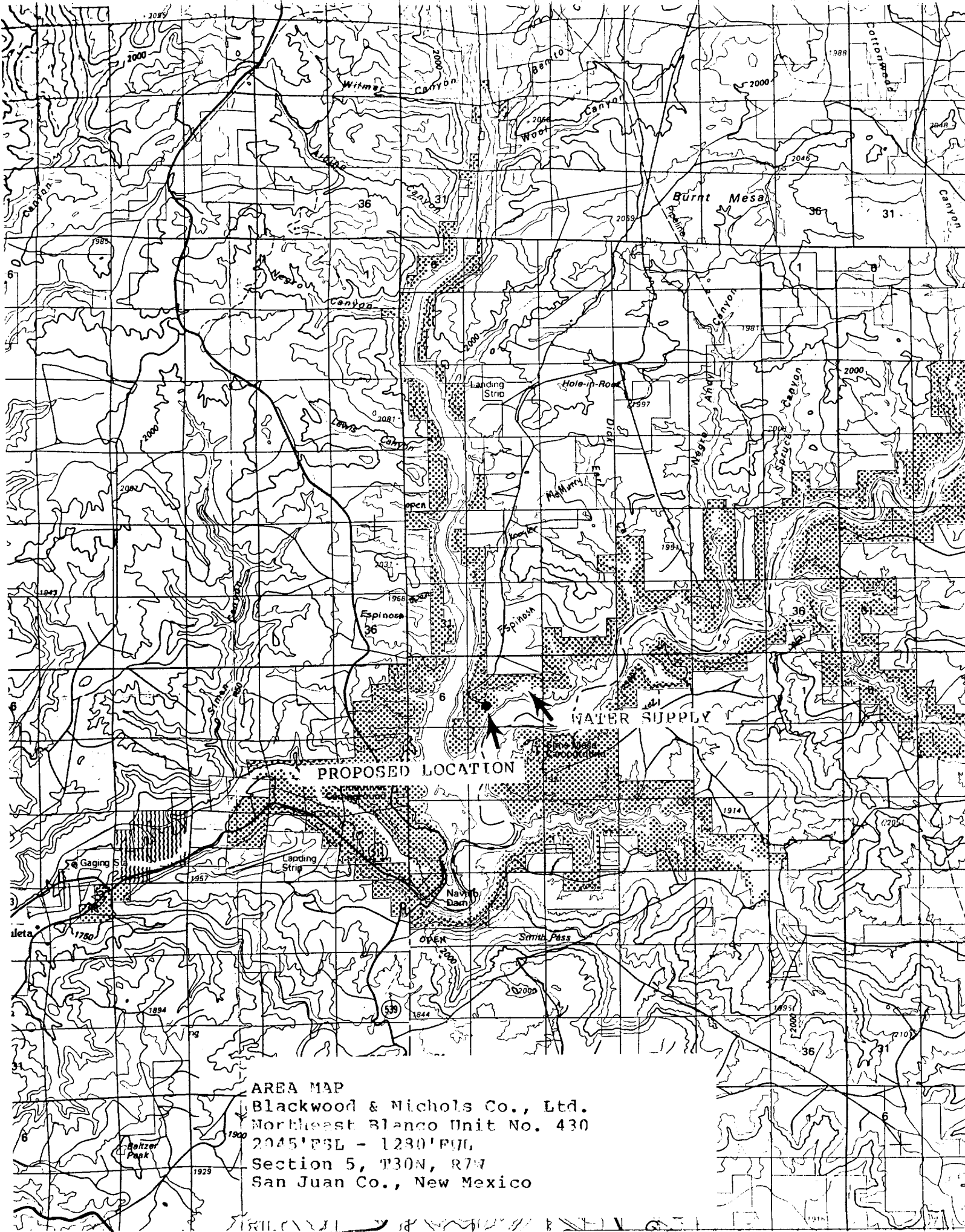
Date Surveyed 12/27/88

Registered Professional Engineer and/or Land Surveyor

Certificate No.



VICINITY MAP
Blackwood & Nichols Co., Ltd.
Northeast Blanco Unit No. 430
2045'FSL - 1230'FWL
Section 5, T30N, R7W
San Juan Co., New Mexico



AREA MAP
Blackwood & Nichols Co., Ltd.
Northeast Blanco Unit No. 430
2045' PSL - 1230' PVL
Section 5, T30N, R7W
San Juan Co., New Mexico