

UNITED STATES
DEPARTMENT OF THE INTERIOR
GEOLOGICAL SURVEY

APPLICATION FOR PERMIT TO DRILL, DEEPEN, OR PLUG BACK

1a. TYPE OF WORK

DRILL ☒DEEPEN ☐PLUG BACK ☐

b. TYPE OF WELL

OIL
WELL ☐GAS
WELL ☒OTHER ☐

2. NAME OF OPERATOR

Blackwood & Nichols Co., Ltd.

3. ADDRESS OF OPERATOR

P.O. Box 1237, Durango, Colorado, 81302-1237

4. LOCATION OF WELL (Report location clearly and in accordance with any State law or regulation)
At surface195' 790'
1330' FNL - 1070' FEL

At proposed prod. zone

same

14. DISTANCE IN MILES AND DIRECTION FROM NEAREST TOWN OR POST OFFICE*

15 miles NE of Blanco, New Mexico

16. DISTANCE FROM PROPOSED*

LOCATION TO NEAREST
PROPERTY OR LEASE LINE, FT.
(Also to nearest drlg. unit line, if any)

250'

18. DISTANCE FROM PROPOSED LOCATION*

TO NEAREST WELL, DRILLING, COMPLETED,
OR APPLIED FOR, ON THIS LEASE, FT.

130'

16. NO. OF ACRES IN LEASE

1779.91

18. PROPOSED DEPTH

3069'

17. NO. OF ACRES ASSIGNED
TO THIS WELL

320 29250 320

20. ROTARY OR CABLE TOOL

Rotary

21. ELEVATIONS (Show whether DF, RT, GR, etc.)

This action is subject to technical and
procedural review pursuant to 43 CFR 3165.3
and appeal pursuant to 43 CFR 3165.4.

PROPOSED CASING AND CEMENTING PROGRAM

SIZE OF HOLE	SIZE OF CASING	WEIGHT PER FOOT	SETTING DEPTH	GENERAL QUANTITIES OF CEMENT
12 1/4"	9 5/8"	36#	300'	207 cuft to circulate
8 3/4"	7"	23#	2879'	781 cuft to circulate
6 1/4"	5 1/2"	17#	2779'-3069'	39 cuft to circulate

22. APPROX. DATE WORK WILL START*

April 1, 1989

DRILLING OPERATIONS AND PROPOSED ARE
SUBJECT TO COMPLETION OF ATTACHED
"GENERAL QUANTITIES OF CEMENT"

Propose to spud in the San Jose formation. Will drill a 12 1/4" surface hole to a TD of 300'. Run and cement surface pipe with cement returns to surface. WOC 12 hrs. Test to 600 psi. Drill an 8 3/4" hole to a TD of 2879' using fresh water mud. No abnormal pressures or poisonous gases are anticipated. Casing will be run and cemented with cement returns to surface. WOC 12 hours. Test to 1500 psi. Drill a 6 1/4" hole to a TD of 3069' using water and air. Run a production liner. Liner may or may not be cemented, depending on hole conditions and wells natural producing ability.

Surface ownership is Bureau of Reclamation

IN ABOVE SPACE DESCRIBE PROPOSED PROGRAM: If proposal is to deepen or plug back, give data on present productive zone and proposed new productive zone. If proposal is to drill or deepen directionally, give pertinent data on subsurface locations and measured and true vertical depths. Give blowout preventer program, if any.

24.

SIGNED

TITLE

Operations Manager

DATE

Jan 23, 1989

(This space for Federal or State office use)

PERMIT NO.

APPROVAL DATE

APPROVED BY

TITLE

DATE

CONDITIONS OF APPROVAL, IF ANY:

NMOCC

*See Instructions On Reverse Side

Submit to Appropriate
District Office
State Lease - 4 copies
Fee Lease - 3 copies

State of New Mexico
Energy, Minerals and Natural Resources Department

Form C-102
Revised 1-1-39

OIL CONSERVATION DIVISION

P.O. Box 2088

Santa Fe, New Mexico 87504-2088

DISTRICT I

P.O. Box 1980, Hobbs, NM 88240

DISTRICT II

P.O. Drawer DD, Artesia, NM 88210

DISTRICT III

1000 Rio Brazos Rd., Aztec, NM 87410

WELL LOCATION AND ACREAGE DEDICATION PLAT

All Distances must be from the outer boundaries of the section

Operator Blackwood & Nichols Co. LTD.			Lease Northeast Blanco Unit		Well No. 432
Unit Letter A	Section 7	Township 30 North	Range 7 West	County San Juan	

Actual Footage Location of Well:

195 feet from the North line and 790 feet from the East line

Ground level Elev. 6301 "	Producing Formation Fruitland Coal	Pool Basin Fruitland Coal	Dedicated Acreage: 320 278.40 Acres
------------------------------	---------------------------------------	------------------------------	---

1. Outline the acreage dedicated to the subject well by colored pencil or hatchure marks on the plat below.

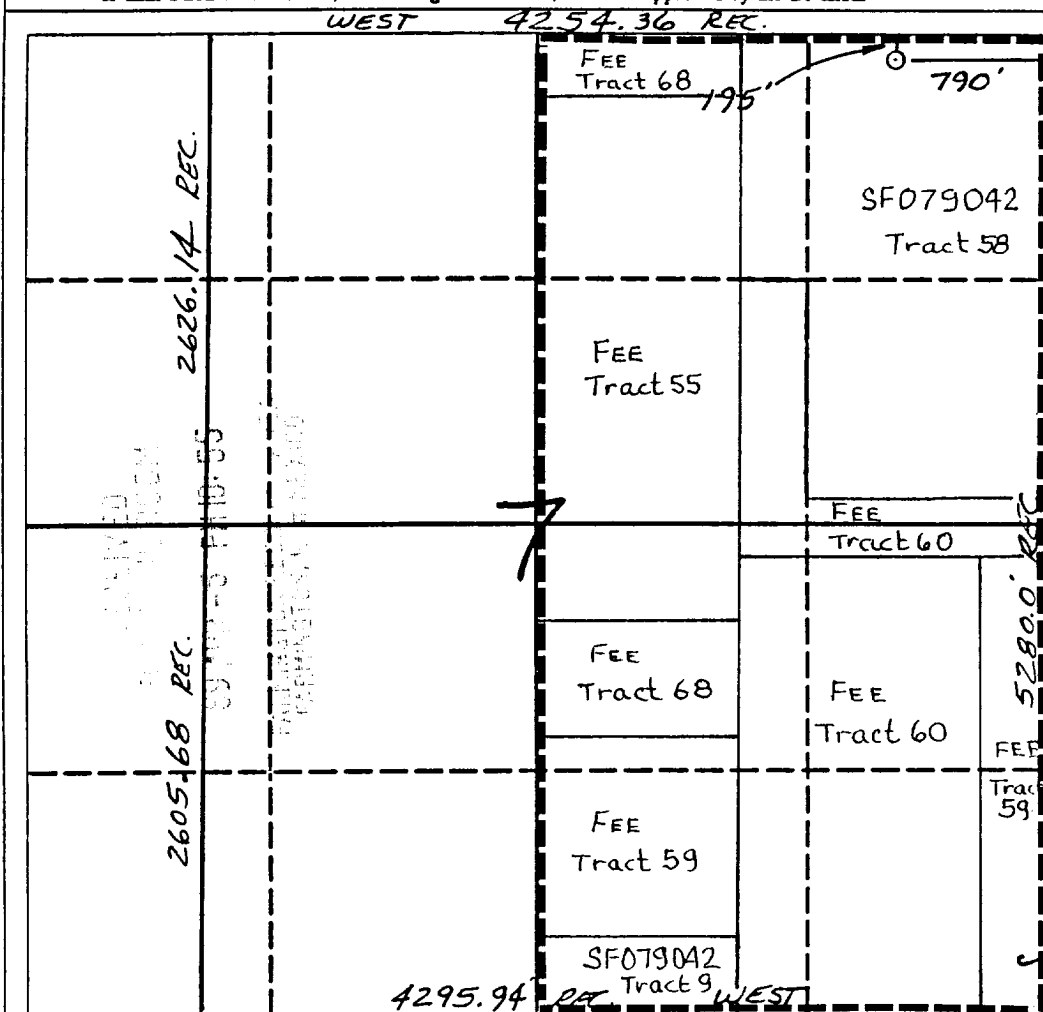
2. If more than one lease is dedicated to the well, outline each and identify the ownership thereof (both as to working interest and royalty).

3. If more than one lease of different ownership is dedicated to the well, have the interest of all owners been consolidated by communitization, unitization, force-pooling, etc.?

☐ Yes ☐ No If answer is "yes" type of consolidation

If answer is "no" list the owners and tract descriptions which have actually been consolidated. (Use reverse side of this form if necessary).

No allowable will be assigned to the well until all interests have been consolidated (by communitization, unitization, forced-pooling, or otherwise) or until a non-standard unit, eliminating such interest, has been approved by the Division.



OPERATOR CERTIFICATION

I hereby certify that the information contained herein in true and complete to the best of my knowledge and belief.

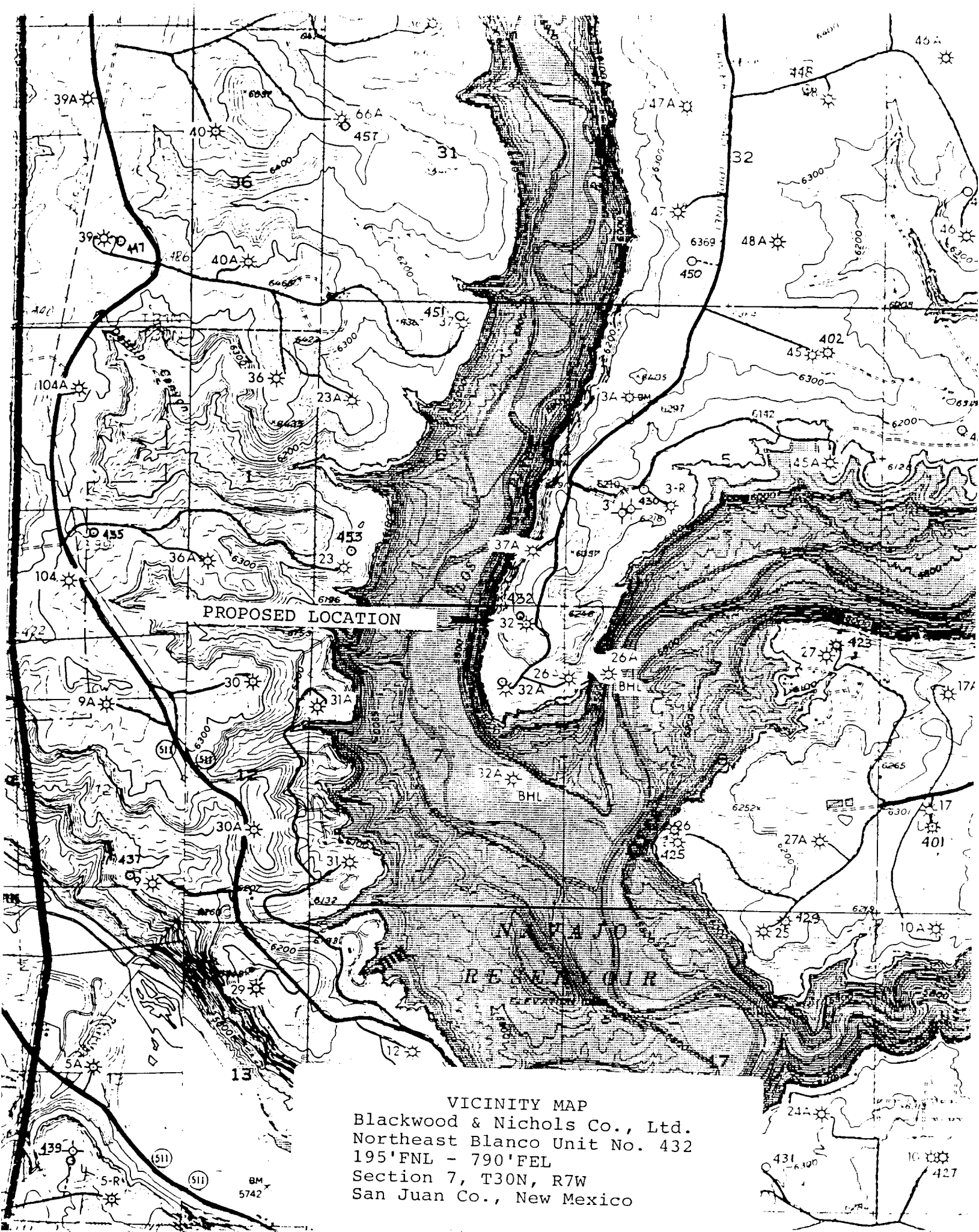
Signature: *William F. Clark*
Printed Name: William F. Clark
Position: Operations Manager
Company: Blackwood & Nichols Co.
Date: March 31, 1989

SURVEYOR CERTIFICATION

I hereby certify that the well location shown on this plat was plotted from field notes of actual surveys made by me or under my supervision, and that the same is true and correct to the best of my knowledge and belief.

Date Surveyed: 3-22-89
Neale C. Edwards
Signature & Seal of Professional Surveyor

Certificate No. 6857



BLACKWOOD & NICHOLS CO., LTD.
P.O. BOX 1237
DURANGO, COLORADO 81302-1237
(303) 247-0728

March 27, 1989

Mr. William LeMay
New Mexico Oil Conservation Division
P.O.Box 2088
Santa Fe, New Mexico 87501

Re: Unorthodox Gas Well Location
Northeast Blanco Unit No. 432
195'FNL - 790'FEL, Sec.7, T30N, R7W
San Juan Co., New Mexico

Dear Mr. LeMay;

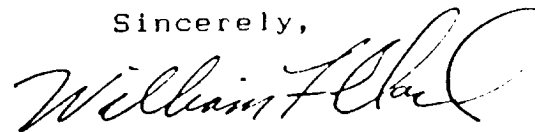
Blackwood & Nichols Co., Ltd. requests administrative approval of an exception to the footage requirements of Rule 7, R -8768 for the subject well, located in the Basin Fruitland Coal Pool.

This request is for exception due to topography. A Vicinity Map and C-102 are attached for your reference. The location was staked at this proposed site as an alternate to the original location at 1330'FNL- 1070'FEL. The original location had archeological sites on the North, West, and Southwest edges. It is bounded on the south by Navajo Reservoir. No alternative sites in the bottom are considered feasible due to the high density of archeological sites.

The east half of Section 7, T30N, R7W, will be dedicated to this well. All offset proration units are operated by Blackwood and Nichols Co., Ltd.

Your prompt consideration of this request is appreciated.

Sincerely,



William F. Clark
Operations Manager
Blackwood & Nichols
Co., Ltd.