

UNITED STATES  
DEPARTMENT OF THE INTERIOR  
GEOLOGICAL SURVEY

## APPLICATION FOR PERMIT TO DRILL, DEEPEN, OR PLUG BACK

## 1a. TYPE OF WORK

DRILL ☒DEEPEN ☐PLUG BACK ☐

## b. TYPE OF WELL

OIL  
WELL ☐GAS  
WELL ☒FARMINGTON RESOURCE AREA  
FARMINGTON, NEW MEXICOSINGLE  
ZONE ☒MULTIPLE  
ZONE ☐

## 2. NAME OF OPERATOR

Blackwood &amp; Nichols Co., Ltd.

## 3. ADDRESS OF OPERATOR

P.O. Box 1237, Durango, Colorado, 87302-1237

## 4. LOCATION OF WELL (Report location clearly and in accordance with any State requirements.)\*

At surface

210'FNL - 1900'FEL

At proposed prod. zone

same

## 14. DISTANCE IN MILES AND DIRECTION FROM NEAREST TOWN OR POST OFFICE\*

15 miles NE of Blanco, New Mexico

## 15. DISTANCE FROM PROPOSED\*

LOCATION TO NEAREST  
PROPERTY OR LEASE LINE, FT.  
(Also to nearest drlg. unit line, if any)

210'

18. DISTANCE FROM PROPOSED LOCATION\*  
TO NEAREST WELL, DRILLING, COMPLETED,  
OR APPLIED FOR, ON THIS LEASE, FT.

200'

## 16. NO. OF ACRES IN LEASE

1779.91

## 19. PROPOSED DEPTH

3125'

17. NO. OF ACRES ASSIGNED  
TO THIS WELL

320

## 20. ROTARY OR CABLE TOOLS

Rotary

## 21. ELEVATIONS (Show whether DF, RT, GR, etc.)

6192'GL

## 22. APPROX. DATE WORK WILL START\*

April 1, 1989

This action is subject to technical and  
proposed 23. review pursuant to 40 CFR 3165.3  
and appeal pursuant to 40 CFR 3165.4.

## PROPOSED CASING AND CEMENTING PROGRAM

DRILLING OPERATIONS TO BE PERFORMED ARE  
SUBJECT TO "GENERAL REQUIREMENTS" ATTACHED

SIZE OF HOLE	SIZE OF CASING	WEIGHT PER FOOT	SETTING DEPTH	QUANTITY OF CEMENT
12 1/4"	9 5/8"	36#	300'	207 cuft to circulate
8 3/4"	7"	23#	2910'	744 cuft to circulate
6 1/4"	5 1/2"	17#	2810' - 3125'	39 cuft to circulate

Propose to spud in the San Jose formation. Will drill a 12 1/4" hole to a TD of 300'. Run surface casing and cement with cement returns to surface. WOC 12 hours. Test to 600 psi/ 30 mins. Drill a 8 3/4" hole to a TD of 2910' using fresh water mud. No poisonous gases or abnormal pressures are anticipated. Run intermediate casing and cement with cement returns to surface. WOC 12 hours. Test to 1500 psi/30 mins. Drill a 6 1/4" hole to a TD of 3125' using water and air. Run a mud logging unit while drilling this interval. Run the production liner. The liner will be cemented if the wells natural flow capacity indicates the need for fracture stimulation.

RECEIVED

MAY 22 1989

Surface ownership is Bureau of Reclamation

IN ABOVE SPACE DESCRIBE PROPOSED PROGRAM: If proposal is to deepen or plug back, give data on present productive zone and proposed new productive zone. If proposal is to drill or deepen directionally, give pertinent data on subsurface locations and true vertical depths. Give blowout preventer program, if any.

24.

SIGNED

*William F. Clark*

TITLE

Operations Manager

DATE

Jan 24, 1989

(This space for Federal or State office use)

PERMIT NO.

APPROVAL DATE

APPROVED BY

TITLE

DATE

CONDITIONS OF APPROVAL, IF ANY:

\*See Instructions On Reverse Side

N'54-2632

*John Skellern*

All distances must be from the outer boundaries of the Section.

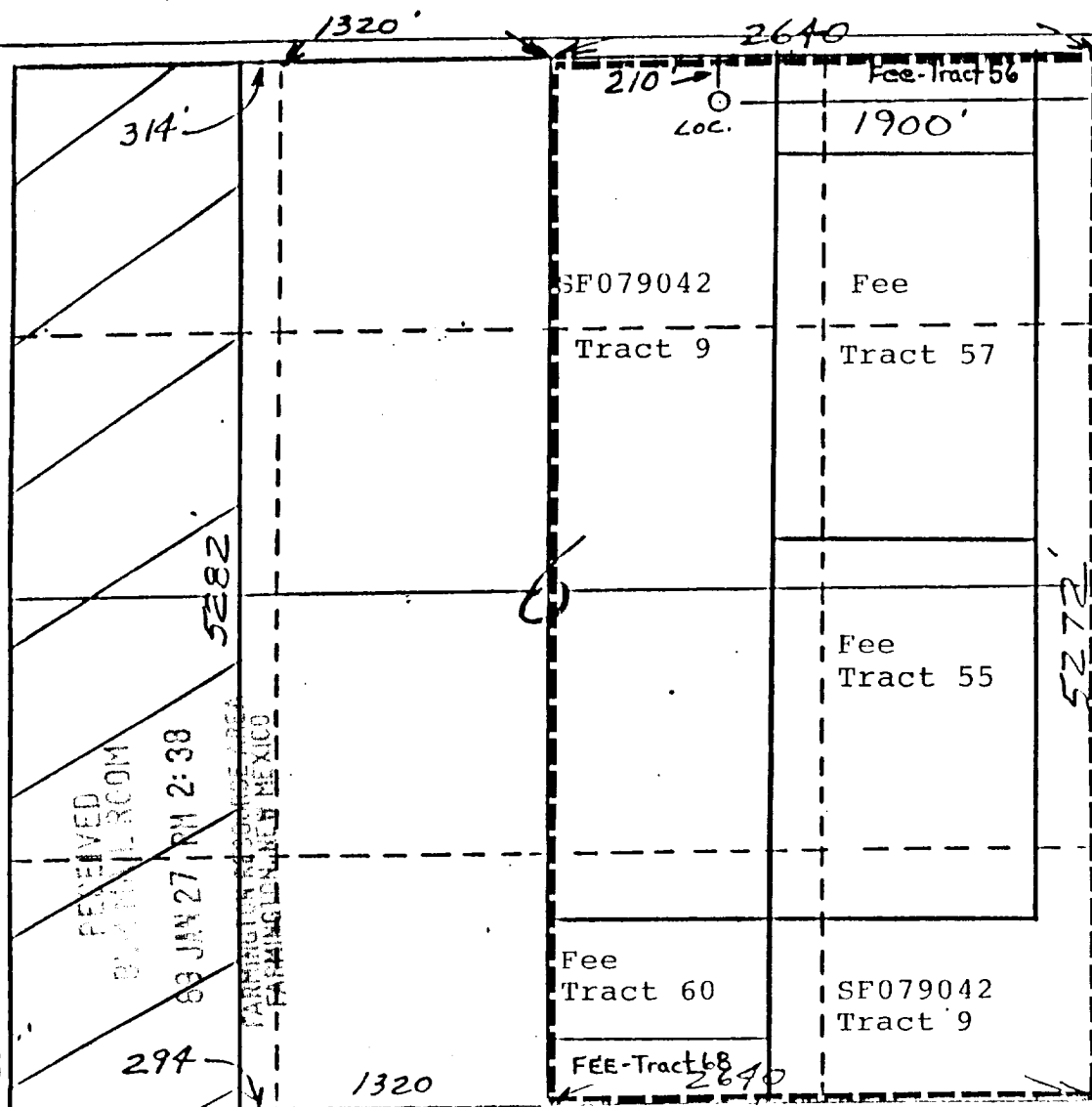
Operator Blackwood & Nichols Co., LTD.		Lease Northeast Blanco Unit		Well No. 451
Unit Letter B	Section 6	Township 30 North	Range 7 West	County San Juan
Actual Footage Location of Well 210 feet from the North line and 1900 feet from the East line				
Ground Level Elev. 6192'	Producing Formation Fruitland Coal		Pool Basin Fruitland Coal	Dedicated Acreage: 320

1. Outline the acreage dedicated to the subject well by colored pencil or hachure marks on the plat below.
2. If more than one lease is dedicated to the well, outline each and identify the ownership thereof (both as to well interest and royalty).
3. If more than one lease of different ownership is dedicated to the well, have the interests of all owners been consolidated by communitization, unitization, force-pooling, etc?

☒ Yes ☐ No If answer is "yes," type of consolidation Unitization

If answer is "no," list the owners and tract descriptions which have actually been consolidated. (Use reverse side of this form if necessary.)

No allowable will be assigned to the well until all interests have been consolidated (by communitization, unitization, forced-pooling, or otherwise) or until a non-standard unit, eliminating such interests, has been approved by the Division.



## CERTIFICATION

I hereby certify that the information contained herein is true and complete to the best of my knowledge and belief.

*William F. Clark*  
Name

Position  
Operations Manager

Company  
Blackwood & Nichols

Date  
January 24, 1989

I hereby certify that the information shown on this plat was obtained from notes of actual survey made by me under my supervision, and that it is true and correct to the best of my knowledge and belief.

*Heale C. Edward*  
Date Surveyed

12/23/88

Registered Professional Engineer  
and/or Land Surveyor

Heale C. Edward

Certificate No. 6357

