

UNITED STATES
DEPARTMENT OF THE INTERIOR
BUREAU OF LAND MANAGEMENT

APPLICATION FOR PERMIT TO DRILL, DEEPEN, OR PLUG BACK

1a. TYPE OF WORK

DRILL ☒

DEEPEN ☐

PLUG BACK ☐

b. TYPE OF WELL

OIL
WELL ☐

GAS
WELL ☒

OTHER ☐

2. NAME OF OPERATOR

Meridian Oil Inc.

3. ADDRESS OF OPERATOR

PO Box 4289, Farmington, NM 87499

4. LOCATION OF WELL (Report location clearly and in accordance with any State requirements.)

At surface

1750'N, 885'E

At proposed prod. zone

14. DISTANCE IN MILES AND DIRECTION FROM NEAREST TOWN OR POST OFFICE*

6 miles from Bloomfield, NM

15. DISTANCE FROM PROPOSED*

LOCATION TO NEAREST
PROPERTY OR LEASE LINE, FT.
(Also to nearest drlg. unit line, if any)

885'

19. DISTANCE FROM PROPOSED LOCATION*

TO NEAREST WELL, DRILLING, COMPLETED,
OR APPLIED FOR, ON THIS LEASE, FT.

300'

16. NO. OF ACRES IN LEASE

1263.40

17. NO. OF ACRES ASSIGNED

TO THIS WELL
320.85

21. ELEVATIONS (Show whether DF, BT, GR, etc.)

5651' GL DRILLING OPERATING

23. SUBJECT TO CERTAIN PROPOSED CASING AND CEMENTING PROGRAM

This action is subject to technical and
procedural review pursuant to 43 CFR 3165.3
and approval of the Bureau of Land Management.

SIZE OF HOLE	SIZE OF CASING	WEIGHT PER FOOT	SETTING DEPTH	QUANTITY OF CEMENT
12 1/4"	9 5/8"	32.3#	200'	125 cf. circulated
8 3/4"	7"	20.0#	1966' / 1991'	395 cf circ. surface
6 1/4"	5 1/2" liner	15.5#	1991'	do not cement

The Fruitland coal formation will be completed.

A 3000 psi WP and 6000 psi test double gate preventer equipped with
blind and pipe rams will be used for blow out prevention on this well.

This gas is dedicated.

The E/2 of Section 18 is dedicated to this well.

RECEIVED

MAR 08 1989

OIL CON. DIV

DIST. 2

IN ABOVE SPACE DESCRIBE PROPOSED PROGRAM: If proposal is to deepen or plug back, give data on present productive zone and proposed new productive zone. If proposal is to drill or deepen directionally, give pertinent data on subsurface locations and measured and true vertical depths. Give blowout preventer program, if any.

24. SIGNED [Signature] TITLE Regulatory Affairs DATE 01-20-89

(This space for Federal or State office use)

APPROVAL OF THE DIRECTOR

APPROVAL DATE

APPROVED BY [Signature] TITLE

DATE

CONDITIONS OF APPROVAL, IF ANY:

*See Instructions On Reverse Side

All distances must be from the outer boundaries of the Section.

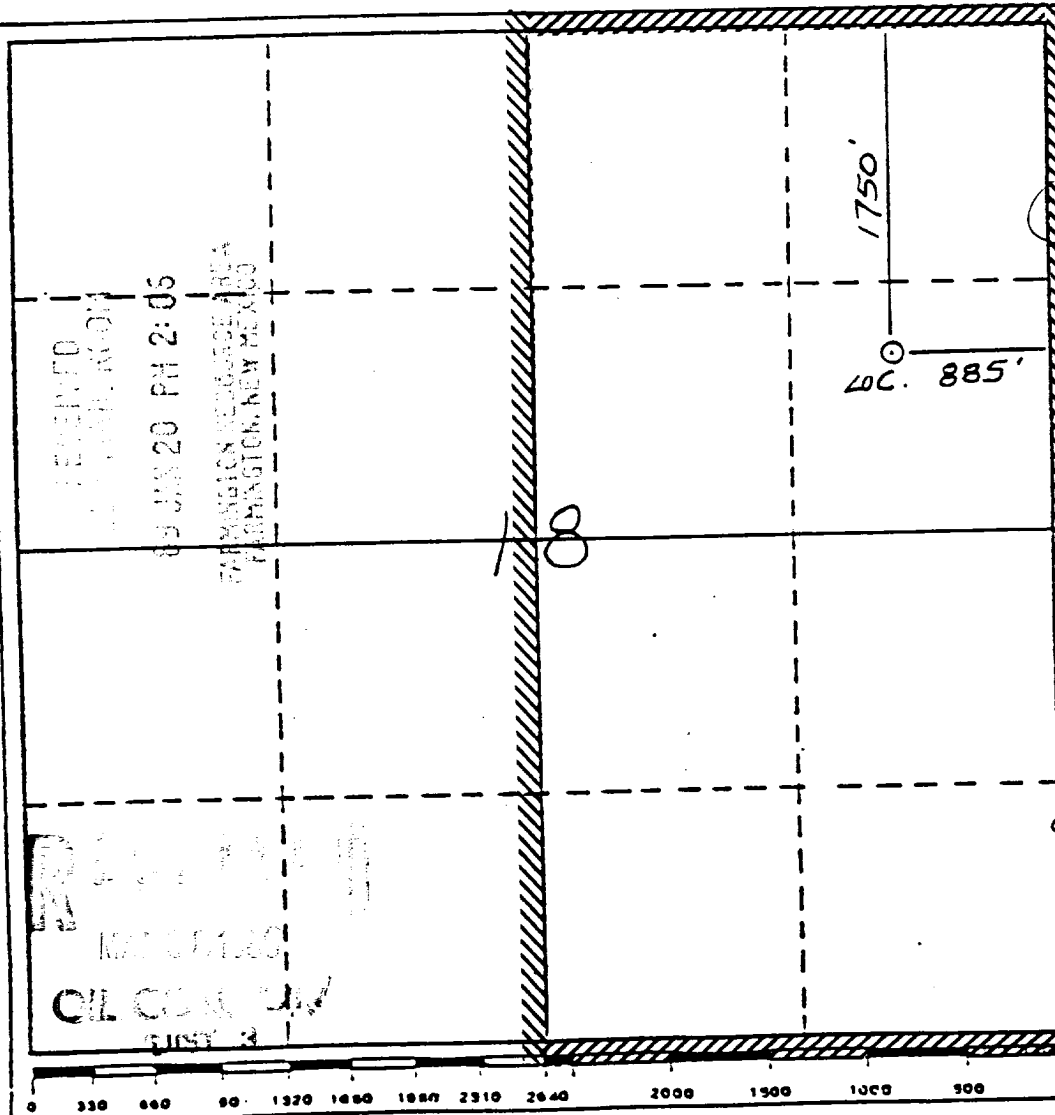
Operator Meridian Oil Inc.		Lease Hubbell (SF-078716A)		Well No. 294
Unit Letter H	Section 18	Township 29 North	Range 10 West	County San Juan
Actual Footage Location of Wells 1750 feet from the North line and 885 feet from the East line				
Ground Level Elev. 5651	Producing Formation Fruitland Coal		Pool Basin	Dedicated Acreage: 320.85

1. Outline the acreage dedicated to the subject well by colored pencil or hachure marks on the plat below.
2. If more than one lease is dedicated to the well, outline each and identify the ownership thereof (both as to working interest and royalty).
3. If more than one lease of different ownership is dedicated to the well, have the interests of all owners been consolidated by communitization, unitization, force-pooling, etc?

☐ Yes ☐ No If answer is "yes," type of consolidation _____

If answer is "no," list the owners and tract descriptions which have actually been consolidated. (Use reverse side this form if necessary.) _____

No allowable will be assigned to the well until all interests have been consolidated (by communitization, unitization, forced-pooling, or otherwise) or until a non-standard unit, eliminating such interests, has been approved by the Division.



CERTIFICATION

I hereby certify that the information contained herein is true and complete to the best of my knowledge and belief.

Name
Regulatory Affairs
Position
Meridian Oil Inc.
Company
Date
1-20-89

I hereby certify that the location shown on this plat was planned from the notes of actual surveys made by me under supervision, and that the same is true and correct to the best of my knowledge and belief.

Date Surveyed
12-29-88
Registered Professional Engineer and/or Land Surveyor

Neale C. Edwards

Certificate No.

6857

150'
700'